

Product datasheet for **MG216506**

Arap1 (NM_001040111) Mouse Tagged ORF Clone

Product data:

| | |
|---------------------------|--|
| Product Type: | Expression Plasmids |
| Product Name: | Arap1 (NM_001040111) Mouse Tagged ORF Clone |
| Tag: | TurboGFP |
| Symbol: | Arap1 |
| Synonyms: | 2410002L19Rik; Centd2; mKIAA0782 |
| Mammalian Cell Selection: | Neomycin |
| Vector: | pCMV6-AC-GFP (PS100010) |
| E. coli Selection: | Ampicillin (100 ug/mL) |
| ORF Nucleotide Sequence: | >MG216506 representing NM_001040111 Red=Cloning site Blue=ORF Green=Tags(s) |

TTTTGTAATACGACTCACTATAGGGCGCCGGGAATTCGTCGACTGGATCCGGTACCGAGGAGATCTGCC
GCC**CGATCGCC**

ATGGCAGAGGGTTACGATGCCGCACTGTCTGTAGCTGAGTGGCTGCGGGCACTTCACCTGGAGCAGTACA
CGGCACCTTTGAGCAGCACGGACTGGTGTGGCCACCGAGTGCCAAGGCCTCAGCGATGCTGGCCTGCT
GGACATGGGCATGCACCTCCCCGGCCACCGCCCGCATCCTGGTGGTCTTCACCGCGCCATGCACCC
CCGGTCCCTCGCTCGCCCCGCCACGGCCCGTCCGATGAAGCGACACATCTCCGTTCCACCACCTG
TGCCCGTCACTCCACCAGAGCCGCCGCCACAGCTGGAGAGGATGAGGGTCTGCCTGCCGCTCCACCTAT
CCCACCCCGAGGAGCTGCCTCCACCTGCCTGCTTCACTCCGACATCCACAGCCGCCCCAGATCCGTG
CTGCCCCCACTGCCTGCCAAGAGACACTTGGTAGAATCCAGCGTTCTCCTGTCCCTCCTCGAACCCGGAC
CCCCCTACCCACAGGCCAGCCTTCTTGCTAAGGAGGAGTTACTGTGCCATCAGTGTACCCCGGTCCCA
ACCAGAGCCTGCAGAGACTCCGTCCACCCTCCTGCCTGCCTTTCCCAGGGGCCCTGCAGCCTCCGTCT
CCTCCTCCCTGTCTCCTGTGATCCCTCCCAAGCCTCCTCGCTGCTCCCTGAGTTTGACGACTCTGACT
ATGATGATGTCCCGGAGGAGGGGCCAGGGGCCACGCCAGTGTGATGACCAAGGAGGAGCCCTGCCGAG
CCGAGTCCCACGGGCTGTGCGTGTGGCTAGTCTGCTGAGCGAGGGGGAGGAGCTGTCTGGGGATGATGCG
GAAGATGACGATGACCATGCCTATGAGGGTATCCCCAATGGTGGTGGCCAACGAGTGGCCTGAATCCAC
CCTTACGCAGCCTGATCCCTGATCTCCCACTGCACCCCATGGATGAGTTGCCTGGGGTCCCACCCCAT
CACACCTGTCATCAAGGCTGGCTGGCTGGACAAGAACCACACAGGGTCTTATATCTATCAGAAGCGA
TGGGTGAGACTGGACGCTGATTACCTGCGATACTTTGACAGTAACAAGGACGCCTACTCTAAGCGTTTTG
TTCCTGTGGCCTGCATCTGCCGAGTAGCTCCTATTGGAGACCAGAAGTTTGAAGTATCACAATAATCG
GACCTTCGCTTCCGGGCAGAGAGTGTGTTGGAGCGAACGAGTGGATGCAGGCCCTGCAGCAGGCAGTA
GTTGAGCATCGAGCCGTTTTCCGCTTTCTAGTCTTCTGTGTTGGGAGTCCGAGGCTCCGAGCAGCCTG
ACCGTGTGGCAGCCTGGAGCTACGAGGCTTCAAGAATAAGCTTTACGTGGCTGTGACTGGGACAAAGT
ACAGCTCTATAAGAATCTGGAGGAATTCATCTGGGCATTGGTATCACCTTTATCGACATGAATGTGGC



[View online >](#)

AATGTCAAGGAAGTGGATCGGCGCAGCTTTGACCTCACTACCCCTACCGCATCTTCAGCTTCTCGGCTG
ATTCAGAGTTAGAGAAGGAACAGTGGCTGGAGGCCATGCAGGGAGCCATCGCAGAGGCCCTATCTACCTC
AGAGGTGGCTGAGCGCATCTGGGCCGACGCCCCAACAGGTTCTGTGCCGACTGTGGGGCCGCCAGCCT
GACTGGGCTCCATCAACCTCTGCGTTGTATCTGCAAGCGTGTGCAGGGGAGCACCGCGGCTGGGTG
CAGGAGTGTCCAAGGTGCGGAGTTTGAAGATGGACAGGAAGGTGTGGACAGAAGCACTATCCAGCTCTT
CTTACATCTGGGCAATGGCCCCGGGAACCACTTCTGGGCTGCTAATGTGCCTCCTAGTGAGGCCCTGGAG
CCCAGCAGCAGCCCTGGTGCCCGCGGTATCACCTGGAGGCCAAGTACAGAGAGGGCAAGTACCGCCGCT
ACCATCCGCTCTTTGGCAACCAAGAGGAACTGGACAAGGCCCTGTGTGCTGCAGTTACTACCACTGACCT
GGCTGAGACCCAGGCACTCCTGGGCTGTGGGGCTGGGGTCACTGCTTCTCAGGGGACCCAGCAGCTCCC
ACACCCCTGGCTCTTGCTGAGCAGGCCGGACAGACTCTGCAGATGGAGTTTCTACGGAATAATCAGAGTA
CAGAGGTCCCTCGTTGGACTCAGTGAAGCCCTTGGAAAAGCACTACTCCGTTACCCTGCCAACTGTGAG
CCACAGCGGCTTCTGTACAAAAGTCTTCTGCCGGCAAACCTCTGCAGGACCGCCGTGCCCGGGAAGAG
TTCAGCCGGCGTGGTGTCTGAGTGTGGGGTCTGAGCTACTATGAAAACGAACGGGCAGTGACAC
CCAATGGGGAGATTCCGGCCAGCGAGATAGTATGCCTAGCAGTTTCCCCTCTGGACCCCATGGCTTTGA
GCACACCTTTGAGGTGTACACAGAGGGAGAACGGCTGTACCTGTTGGGCTGGAGAATGCAGAGCTGGCT
CATGAGTGGGTCAAGTGCATTGCCAAGGCGTTCGTGCCTCCCCTGGCTGAGGACCTGCTAGCCCGGACT
TTGAACGTCTTGGGCGCCTACCCTGTAAGCTGGCCTGAGCCTTCAAGCAGCTCAGGAAGGCTGGTTTGC
CTTGACTGGCTCTGAGCTCCGGGCTGTCTTCCCAGAGGGGCCCTGGGAAGAGCCGCTGCAGCTCCGAAA
CTGCAAGAGCTTTCTATCCAAGGAGACAGCGAGAACCAAGTGTGGTGGTGGAGCGGAGGAGGACAC
TGTACATCCAGGGTGAAGCGGCGCTGGACTTCAATGGCTTGGTGGTGGTGGTGGTGGTGGTGGTGGTGG
GACTACATCACGCAGTGTGGCTTGAACCTCAGAGGGTATCTATCGAAAGTGTGGTGGTGGTGGTGGTGG
AGACTGTAGACAGCCTCCGGCAGGACGACGCTCTGTGCACCTAAAGGAGGGAGAACAGCAGCTGGA
CGACGTCTCCTCTGCACTCAAACGCTTCCCTCAGGGACCTGCCCGATGGGCTCTTACGCGTGGCAGCGC
CTGGCCTGGCTGGAGGCCTCTGAGATCGAGGATGAGGAAGAAAAGATCTCCAGGTATCGAGAGCTTTGG
TGCATCTGCCCTGTCAACCGGCCACTGTGAAGGCCCTTATCAGCCATCTGACTGTGTACAGTGCTT
CTCAGACACAAAACCAATGAACACACACAACCTGGCTATCGTGTGGGCTTACTCTTCCAGACAGAC
GGGCAGGACTACAAGGCCGGCAAGGTGGTGGAAAGACCTCATCAACCACTACGTGGTGGTGGTGGTGG
ACGAGGAGGAGCTGAGGAAGCAGAGGGAGGAAGTACGGCCATCGTGAAGATGCGAGTGGCTGGCACTGC
CAGTGGGACCCAGCATGCTGGCGACTTCACTGACAGTCTACCTGGAGGAGAAGAAGGTGGAGACTGAA
CAGCATGTTAAGATCCCAGCATCCATGACTGCAGAGGAGCTTACTCTGGAGATTCTGGACCGCCGAATG
TGAGCATCAGGGAGAAGGACTACTGGACTTGTCTTGGAGTCAACGAGAAGGAGGAGGAGGAGGAGGAGG
GCACTTTGCAGAGAAGGTGCTGCCATTGTCCATGGGCTGGGCATAGACAGCCATCTGGTGGTGAAGAAG
TACCAGTCCATGGAGGCCATGCTGTGACTTGGCCAGCCGTGTGGGTGACACCAAGCATGGTATGATGA
AGTTCCGTGAAGACCGCAGCCTCCTGGGCTTGGGGCTACCTTCCGGTGGCTTCCACGATCGCTACTTCA
TCTCAACAGCAGCTGCCTACGGCTCTACAAGGAGGTCCGGAGTACCGGCCCTGAGAAGGAGTGGCCTGTC
AAGAGCCTCAAAGTCTACCTGGGTGTAAGAAGAAACTGCGGCCACTACTTGTGGGGCTTACCGGTGG
TGCACGAGACAGAAAAGCAGAGAAGCAGCAGTGGTACCTCTGCTGTGACACGCAGATGGAACCTCGAGA
GTGGTTTGGCACCTTCTCTCTGTGCAGCACGATGGCCTGGTGTGGCCCTCCGAGCCATCTCGAGTGTCC
CGGGCAGTGCCTGAGGTCCGGATGGGCAGTGTATCGCTGATCCCTCTACGAGGCAGTGAAAATGAAATGC
GCCGGAGTGTGGCAGCCTTCACTGCTGACCCCTTCCCTTCTCCGCCATGTC

AGCGGACCGACGCGTACGCGGCCGCTCGAG - GFP Tag - GTTTAA

Protein Sequence: >MG216506 representing NM_001040111
 Red=Cloning site Green=Tags(s)

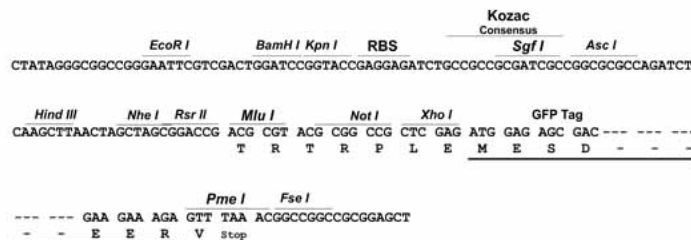
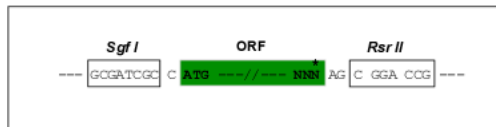
MAEGYDAALSVAEWLRALHLEQYALFEQHGLVWATECQGLSDAGLLDMGMHLPGHRRRILAGLHRAHAP
 PVPLPRPAPRPVPMKRHIFRSPVPVTPPEPPPTAGEDEGLPAAPPIPRRSCLPPACFTPTSTAAPDPV
 LPPLPAKRHLVSSVPPVPPRTGPPYPQASLLAKEELLPSVSPRSQPEPAETPSTLLPAFPQGPLQPPS
 PPPCPPVIPPCKPRLLEPFDDSDYDDVPEEGGAPASVMTKEEPLSRVPRAVRVASLLSEGEELSGDDA
 EDDDDHAYEGIPNGGWPTSGLNPPLRSLIPDLPLHPMDELPGGTPITPVIKAGWLDKNPPQGSYIYQKR
 WVRLDADYLRYFDSNKDAYSKRFVPVACICRVAPIGDQKFEVITNNRTFAFRAESDVERNEWMQALQQAV
 VEHRARFRLSSASVLGVRGSEQPDRAGSLELRGFKNKLYVAVTGDKVQLYKNLEEFHLGIGITFIDMNVG
 NYKEVDRRSFDLTPYRIFSFADSELEKEQWLEAMQGAIAEALSTSEVAERIWAAPNRF CADCGAAQP
 DWASINLCVVICKRCAGEHRGLGAGVSKVRS LKMDR KVWTEAL IQLFLHLGNGPGNHFWAANVPPSEALE
 PSSSPGARRYHLEAKYREGKYRRYHPLFGNQEELDKALCAAVTTDLAETQALLGCGAGVSCFSGDPAAP
 TPLALAEQAGQTLQMEFLRNNQSTEVPRLDSVKPLEKHYSVTLPTVSHSGFLYKTASAGKPLQDRRAREE
 FSRRWCVLSDGVLSSYENERAVTPNGEIRASEIVCLAVSPLDTHGFEHTFEVYTEGERLYLFGLENAELA
 HEWVKCIAKAFVPPPLAEDLLARDFERLGRLPCKAGLSLQQAQEGWFALTGSELRAVFPPEGWEEPLQLRK
 LQELSIQGDSENQVLVVERRRRLTIQGERLDFMAWLGVIQKAAASLGDTLSEQQLGSDIPVIYRVCY
 DYITQCGLTSEGIYRKCQTSKTRQLLDSL RQDARSVHLKEGEQHVDDVSSALKRFLRDLDPGLFTRAQR
 LAWLEASEIEDEEEKISRYRELLVHLPPVNRA TVKALISHLYCVQCFSDTNQMNTNHLAIVFGPTLFQTD
 GQDYKAGKVVEDLINHYVVVFSVDEEELRKQREEVTAIVKMRVAGTASGTQHAGDFICTVYLEEKKVETE
 QHVKIPASMTAEELTLEILDRRNVSIREKDYWTCFEVNEKEEAERPLHFAEKVLPVHGLGIDSHLVVKK
 YQSMEAMLLYLASRVGDTKHGMMKFREDRSLGLGLPSGGFHDRYFILNSSCLRLYKEVRSHRPEKEWPV
 KSLKVYLVGKKLRPPTCWGFTVVHETEKHEKQWYLCDDTQMELEWFAFLLSVQHDGLVWPSEPSRVS
 RAVPEVRMGSVSLIPLRGENEMRRSVA AFTADPLSLLRHV

SGPTRRRLE - GFP Tag - V

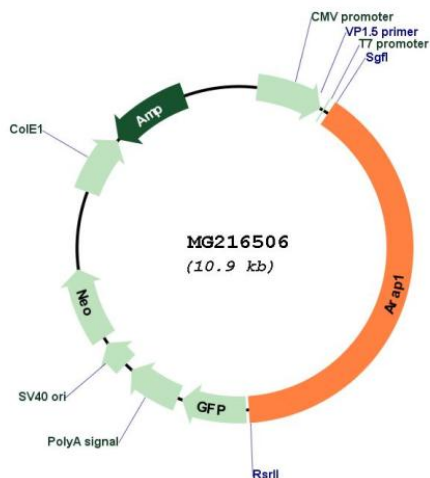
Restriction Sites: SgfI-RsrII

Cloning Scheme:

Cloning sites used for ORF Shutting:



Plasmid Map:



ACCN: NM_001040111

ORF Size: 4323 bp

OTI Disclaimer: The molecular sequence of this clone aligns with the gene accession number as a point of reference only. However, individual transcript sequences of the same gene can differ through naturally occurring variations (e.g. polymorphisms), each with its own valid existence. This clone is substantially in agreement with the reference, but a complete review of all prevailing variants is recommended prior to use. [More info](#)

OTI Annotation: This clone was engineered to express the complete ORF with an expression tag. Expression varies depending on the nature of the gene.

Components: The ORF clone is ion-exchange column purified and shipped in a 2D barcoded Matrix tube containing 10ug of transfection-ready, dried plasmid DNA (reconstitute with 100 ul of water).

Reconstitution Method:

1. Centrifuge at 5,000xg for 5min.
2. Carefully open the tube and add 100ul of sterile water to dissolve the DNA.
3. Close the tube and incubate for 10 minutes at room temperature.
4. Briefly vortex the tube and then do a quick spin (less than 5000xg) to concentrate the liquid at the bottom.
5. Store the suspended plasmid at -20°C. The DNA is stable for at least one year from date of shipping when stored at -20°C.

RefSeq: [NM_001040111.1](#), [NP_001035200.1](#)

RefSeq Size: 5837 bp

RefSeq ORF: 4326 bp

Locus ID: 69710

UniProt ID: [Q4LDD4](#)

Cytogenetics: 7 E2

Gene Summary: Phosphatidylinositol 3,4,5-trisphosphate-dependent GTPase-activating protein that modulates actin cytoskeleton remodeling by regulating ARF and RHO family members. Is activated by phosphatidylinositol 3,4,5-trisphosphate (PtdIns(3,4,5)P3) binding. Can be activated by phosphatidylinositol 3,4-bisphosphate (PtdIns(3,4,5)P2) binding, albeit with lower efficiency. Has a preference for ARF1 and ARF5 (By similarity).[UniProtKB/Swiss-Prot Function]