

## Product datasheet for **MG216488**

### D630045J12Rik (NM\_194061) Mouse Tagged ORF Clone

#### Product data:

<b>Product Type:</b>	Expression Plasmids
<b>Tag:</b>	TurboGFP
<b>Symbol:</b>	D630045J12Rik
<b>Synonyms:</b>	Kiaa1549; mKIAA1549
<b>Mammalian Cell Selection:</b>	Neomycin
<b>Vector:</b>	pCMV6-AC-GFP (PS100010)
<b>E. coli Selection:</b>	Ampicillin (100 ug/mL)

**ORF Nucleotide Sequence:** >MG216488 representing NM\_194061  
Red=Cloning site Blue=ORF Green=Tags(s)

TTTTGTAATACGACTACTATAGGGCGCCGGGAATTCGTGACTGGATCCGGTACCGAGGAGATCTGCC  
GCCGCGATCGCC

ATGGAGCGGGAGCCCCGCGCCAGGGTTGCACTGGTGCCGGAGCGGTGCGGCCGCGGGCCTTCTCCCGCC  
ACCGCCGCCCGGGGCTGCTGCTCCCGGCCTCTGGCTGCTGCTGCTCGCCGGGCGGGCCTCGTGCGCCCC  
AGATGACCTCTCCCTGGCTCAGCACAGCCATCCTGTACGCCCTCGGACTTCTGCCAGAGAGAAGCATC  
CTGCACAGTGTGCACAAGTGACCTTATCAGAGACTGTTCCAGGTCCCAACCAAGCATCTCTGCCCTTG  
TCCTCTCCTCTCCGTGAGCGCAGCTTTTGATACAGCCTTTTTAAGCCAGAGACAACAGACTCAAAGTAC  
AGCGGAGCCAGTTTCTTTGAGGCAAATTACGGATCCGTGACGAGTAATGAGGTGGCCCTCGATGATGAG  
GAGATGGATAACTTTTTGCCAGATGCTCATTGGACCTTTCAAGGGGGTTTTCCCAATGCGGTATATCA  
CACCGAGTCCACCAGAGCCACCCAGGAAATGCTGGAGCCTGGCAGACCCCATCACTTCCACCATTTT  
TTTGCCGGATGAAGTGCTGTCGGATGTCAGAACACAGTGCAACAGGCAACTGTATATGTGGAGCCGTCC  
ACGTACTTCGCACTTCTTGGTCAGCTTTCTCACGTCTGAGGGCATCATTCCAACCTCTAGTAGGAATT  
CGGTGCTTCATCCTATAGAAATTCACAGCCAGTATCAAGCAAGGCTTTGCCAGAGACAGTAGTCTTCTGT  
ACTCAACAGCCATCTGTCCCTGTGGGAGGTCTCACAGCCTCTAGTGGGTGCTCGGCCACAAGCTCGG  
ACAGATACCCTAATGAGACCACTGCTTGGATCGAACACCCAGAGGAAGCCATCGCTCTAAGAGCACACCC  
TGGCATAAACACGTCAACACAGACCCCACTTTTAGCAGTCAGCCTTCTGCTCTATTTTCAACCCCACTT  
TCATCTGTGCTTTTGTACCAATACCTGGTGTTCGGAGGACTCCTCCTCTCTAGTGAGGCCAGGG  
GAGCCTTAGAGTCATGGCATAGCTCCCAAGTCCCAAGTTTTACTGACCATCCTTATGTCTGAGCCCGA  
GTCTTCCCTGAGACCACACAGGGTGTGTCTTGCCTTGTCTCATCTTCAACAAGAACTGGCCAGG  
AGCCTAACAGAGAAGGACATGGGGTCAGGCGACAGGCTTGAGACTTTGTCTACTGCCTCGGTAGAGGCAA  
GTCATGTCTCTCCATTGAGCAGTGTGGGCACAGACCTCTGAACCTGAAGAGCCTCAAGAAATTAATAC  
GCTTTTCCCTTCCAGACTGTGTTTTCTTTTCTTCCAGACCTGTGGGGCTGTGGAAAGCCAGCATGGAT  
GTGTCACCCGAGGTGGATGTGAGTGGCATTGCCATCACTCAGGTGTACCCTTCCATGGCCGCTCTCCA



CACCAAGCTCACTGGATTGCACTTTTGCTTCTCTGTACCAGTGATCTAGTGATGTCATCCAGTATGAT  
CCATCTGTTGCTCTGTCAATCCCAAGCACCATTGACTCATCTTTCTCCTTGACTGCAAATCAAAC  
AGTCCATCCCTTCCAGCTGGAAGCCAAAGCCTTCTCACCTCTCCAGTCTGGTCCCTCAGCACAGTCTA  
GGCTTTCTCTCACGGAGCACCTACCAGCTCTCTGGAACCTCAGTCTGGAAGTCTGTTGGATTTCACATC  
CGGCTTTTACTCCACTCCGCCCTGGACTTCCAGCACTCCAGCCCTTCCAGGTGAGACGAGCTTGTCTTC  
CCATCTTTGATGTCAAGCGATCCATCAACCTTCTTTTCAAACCTTTTCCACCATGGCTGAGACATTTT  
CACTGTCCAACCTATGAATTTGCAATCACCTCAGCTTCTGTTCTTAATCCCAAGTCTAGAGCCGTC  
TCAGCCACAGTCAAGTGCAGACCTTCTTTGAAACACAGTCACTGTTCTTCTAGTCCCCCGAGAGGCC  
CCAATTTAAGCTCCCCCTCTGACTCTCTCGAGTTCACCGAAGTATCCAGAGTTTCACTGAGAGAATCCC  
ATGTTCACTTACCTCAGCTTCTCTGAAACTACCTCTGCCTTTGAATTTTACCCATTCCCATGAGTC  
CACTATCAGCACACTGGTGCCTCCAGCTCTGAGCCCTCTCTGGCATCTACGCAGCTGGGACTCACCTC  
ACATCACTGCCAACAACTGTTTTCCATTTGACACCCATTTTAAACCGAGTCACTCCATTCTCGACTCTGA  
CACCTTCCGATGGCAGTGTGCGTGTGACAGATCATCACACACCAGTCTTACCCACACCTCCAGTGCAT  
TCCAAGCAGCACAGAGTGCATCTGACCCGTACCTGTGAGCCCTCTCATCACTTGTCTGAAAGTAAAGC  
CCTTCACTCCGCCCAAAGCCAGTCAATGGCTCATATTGACATCCACAGATTTCCCGCCAGTACTT  
CCCCAGAACTAAGTACATCCCTGGAACGAGCATGCCAGTCCAGCAGTCCAGTCCAGTCCAGTCCAGT  
CTCTGCTCTGAACAGCGAGCCTATGAGTCAAGAACCTCAGGGAAACAGTGTACCCCTCCCAACCTCC  
CTCGGTCTGCTACCACCTCCAGCTTGAAGCCACAGTTGGTACACCAGCACTGGCCACAGCCAAGCCGC  
CATATGTGTGTGATATTACGGTCCCGATGTCTATTGATCACAACCTGTGTGGCCAGACGAGCTGTGCA  
GGAGTACATCATTACATCAATTAAGAAGTGTGAGAATCCACTTCAACCGTGCAGTGGAGTAAAGTT  
TATGAACTGTTACAGACTTACATTTCTGGTAACTGCTGCTCTTTGTTTACACGGCATATCAGTCA  
TCAACGCTCTCATCAATAGCAAATGTGCGTGGCCAGACGCCCTTAACTCTGTCTGTGAAGCCATCTTT  
TCTCGTCCAGATCCAGGTTTCAAGTTCAAACAGTACTGCAGTTCGTGCCTCCAGTGTGATACTGGC  
TTCTGCAACTTCACTCAGAGCATTGAGAAAGCCCTGGTGCAGCTCTTTGAAAGTGAAGAAACACCAGG  
GAACATATAACCTCACAGTGCAGATTGTGAATGTCACCATTGCTTCTTCCAGGGTGGCTCCCGGAGGGG  
CCCAGTGAATATTATCTTTGCTGTTAAAGGCTCGCAAGGTTTTCTGAATGGGTCCGAGGTGAGCGATCTG  
CTGAGGAACCTGACGGTGGTGGAGTTCAGCTTCACTGGGGTACCCGGTGTACAGATCCAGAGCCCT  
TCCAATACCCGACAGCTCAATTTATCTCAGTACTGAAGTCTCTTGGGTGAGAACAGTCTCTCGGGTGT  
AGTGGAAAAACAGCTCCACAATGAAGTGTTCAGCCGAGATGGAGCGCAAACCTGGCTCAGTGTCTCAGC  
GAGGTGCCACCCGAAGACGCGTGTGGCGGAGGCCACTGTAGCTGCTGGGAACAGCGTGGTACAGGTGG  
TGAACGTGTCCAGGCTGGAGGGAGATGACAACCCGGTGCAGCTCATCTACTTTGTGGAGAATCAAGATGG  
AGAGAGACTCAGTGCAGTCAAGTCTTCCAGATCTGATCAACAAGGTAGACCTCCAGAGGGCAGCCATCATC  
CTGGGGTACCGGATTCAAGGCGTATTGCCAGCCTGTGGACAGGGTGAAGAGGCCATCCCCAGAGTCCAC  
AGAGCAACAACCTCTGGGTCTGTTGGTGGCTGATCTCCCGTGTGGTGGTCAACGTAATGTTGTTAT  
CCTCTACTGGAAGTGTGCCGACGGACAAGCTAGACTCCAGCCAGACACGGTGGCCAACATACAGCAG  
CGGAGAAGTGCAGATCCCCAGCCTGAAGGGCTTCGATTTTGTAAAGCAGACTCTGGGCCAGCACAATA  
AAGACGACATCCTGATTATTATGAGCCAGCGCCACTGCCAGGCCCTGTGAAGGACCACACCACCCCTC  
AGAAAACGGAGATGTGCCGAGCCCCAAGTCAAAGCTCCCTTCAAGAACATACGGCTCAGAGGGAGAGTT  
TCCCCCTCAGATGCTGACTCAACAGTCAAGGAGTCCAGCGAGAGGGACGCGGGAGAGAAGGCCCGGG  
CTGCTGCCCTGAGAAACAGGCTCTCAGAGCTCCGACAGTGGCGCCCCCTGCCAGTTCAGGCAATGA  
GCAGCATTCCTCAGCCTCATCTTTGAGCAGTGGACAGGGTTTCCAGGACCTCAGAGGCCAGCCGCGGG  
GTCCCCAGTAAGATCCAGCTGATTGCCATGCAGCCATCCCGGCCCTCCAGCGCAGACCTGTCTGCTGG  
CCGACCGAGTGGCAGAGACCAAAAATCAACAAGGAGATCCAGTCACTGCGCCACAAGTCCGAGAT  
TGAGCATACCCGCAACAAGATTGCTCTGTCGCAACCGCCGAGGCCACTACGAGTTCGCGGTGGTGGAT  
GACCTGTCTCTGTTGACACCAAGGAGCGACACCGAGTATACCGCAGGGCACAATGCAGATTGACAAGA  
TCCTGGACCCCGCAGCAGTGTGCCCTCTGTGTTTATAGAGCCAGGAAGAGCTCACGGATGAAACGTTT  
TCCTAAGCCACGCCGAAACACCAGGTCAACGGCTGTCCCGTGTGCGGAGAAGGACCAGTCTATCACC  
ACAGACAGTACCGCACATACAAGCGCCCTCCCGGTGTGCAACCTCTGCCTACATCGGATGCCCGTCTG  
ATCCTGACCTCCCAGCTGATGTCCAGACACCTCCTCTACAGAGCTGGGCAGGTATCCCGCCCTGCCCTT  
CTCAGCCTCTCAGTACATCCCGCTCAGCCGTCCATCGAGGAGGCACGCCAGACCATGCACTCCCTCCTG  
GATGAGCCTTTGCCCTCGTGGCTCCAGCAGCCAGCCACCAATGCTATGGGAGCGGGTACTGGTGTGC  
CTGCCAGCCTACCTGTGAATAGCACCCCTCCAGGGAAGAGAGGGCAGCCACGCAAGTGGGGTCCCTCTA  
CAGTCCAGCTCAGACGGCCAACAACCTTGCAGCAGATACGAGGACTATGGGATGACTCCCCCATCGGGC  
CCATTGCCAAGCAGACCTAGCTTTGGCCAGGGTGTGCTGCCGTCTCAGAGTGGTTCCCTGAAACCC  
CACAGCCACAGTCACTCACTGATGCTCCATATGCTGCCGAGGGATCTACTCAGAGGAGATGCCATCAGT  
GGCCCGCCCTCGGCTGTTGGGGGACCACAGGCTCCAGATCCAGCATCTGACACAGGTGGGGATTGCA

AGCAGAATCGGGGCCAGCCAGTGGAGATTCCTGCCGGCAGAGGCAGCCAGTACGGGGACCAGGCTGGC  
 CTGTGTACGGGGAGGAGGAGGCAGGGCGAAGAGAAGCCACCCACATGCTCGGACATCAAGAGTATTCTTC  
 TTCACCGCTGTTTCAGGTGCCAAGGACTTCGGGCAGGGAGCCCTCAGCCCTCCCGGAACCTCGCCAC  
 CGAGGGCTGCAGGGCCCTGGGCTGGGTTACCCACCAGCTCCACAGAGGACCTCCAGCCCGGCCACTCT  
 CCGCTCCCTCATCAAAGCGATCCGCGAGGAGCTCCTGCGGCTCTCTCAGAAACAGGGCTCAGTACAGAA  
 CTTCCACAGC

AGCGGACCGACGCGTACGCGCGGCTCGAG - GFP Tag - GTTTAA

**Protein Sequence:**

>MG216488 representing NM\_194061  
 Red=Cloning site Green=Tags(s)

MEREPRARVALVPERCGRGPSSRHRPGLLLPGLWLLL LAGPASCAPDDL SLAQHSHVPRPSDFLPERSI  
 LHSAQVTLSETVPRSQPSISALVLSPPSATAFDTAFLSQRQQTQSTAEPFF EANYGSVTSNEVALDDE  
 EMDNFLPDAHWTSSRGVSPMRYITSPPEPPQEMLEPGTTPSLPTISLPDEVLSGCQNTVQQATVYVEPS  
 TYFGTWSAFLTSEGIPTPSRNSVLHPIEIHSQLSSKALPETVASVTEGAENLLFSSRISVSPQSGNGM  
 TQQPSVPLWEVSQPLVGLVATSSDRYPNETTAWIEHP EEAIALRAHPGITTSPDPTFSSQPSALFSTPL  
 SSVSFATQLPGVSEDSFLSSEARGALESWHSSPVPSFDHPYVLSPESSLRPHTGCVSCVVSFFQQLAR  
 SLTEKDMGSGDRLETLSTASVEASHVSPLSSVGTDLSELEEPQEFNTLFP SRPVFSFSSRPVGLWKASMD  
 VSPEVDVSGIAITQVYPSHGRLSTPSSLDSTFGFSVTSDLVMSSSMIHLLSSVIPSTHFDSSFLTANQN  
 SPSFPAAGKPSLLTSPSLVPSAQSSAFSHGAPTSSELELQSGSRDLDFTS GFYSTPPLDFSTPAPSRSELA  
 PSLMSSDPSTFFSQTFTMAETFSLNSMNLQSPQLSVLNPTSLEPSQPQSSADLLNTVTVLPSPPERP  
 PLSPPSDSLEFTEVSRVSLRESHVHLTSAFSETTSAFEFSP IPHESTISTLVPSSSEPSLGIYAAGTHL  
 TSLPTTVFHLTPILTESSPFSTLTPSDGSRVTDHHTPVLP TSSVIPSSSTESISDPYLSASSSLVSEVS  
 PSPPPTKPVMGSSLTSTDFPSTPELSTLELSMPSASTAPGDTVDSALNSEPMSQNPQGNSVPPPQPS  
 LGPATTSTLEATVGTALATAKPPYVCDITVPDVYLLITTVLARRAVQEYIITSIKEVLR IHFNRAVELKV  
 YELFTDFTFLVTS GPFVYTAISVINVLINSKLV RGQTPLILSVKPSFLVPDPRFQVQTVLQFVPPSVDTG  
 FCNFTQSIEKGLVTALFEVRKHQGTYNLTVQIVNVTIASSRVAPRRGPVNIIFAVKGSQGF LINGSEVSDL  
 LRNLTVVEFSFYLGYPVLQIAEPFQYQNLNLSQLLKSSWVRTVLLGVVEKQLHNEVFP AEMERKLAQLLS  
 EVPTRRRVWRRATVAAGNSVQVNVNVRLEGGDNPVQLIYFVENQDGERLSAVKSSDLINKVDLQRAAII  
 LGYRIQGVIAQPVDVRVSRPSPESQSNLWVVVGVVIVLVVTVIVVILYWKLCRTDKLDFQPDVTANIQQ  
 RQKLQIPSVKGFDFAKQHLGQHNKDDILIIHEPAPLP GPVKDHTTTPSENGDVSPKSKLPSKNIRLRGRV  
 SPSDADSTVSEESSERDAGEKAPAAA PENKALRAPQSGAPLPSSGNEQHSSASIFEHVDRVSRTSEASRR  
 VPSKIQLIAMQPIAPPQAHPVLADRVAETNKINKEIQSALRHKSEIEHHRNKIRLRAKRRGHYEFVVD  
 DLSSGDTKERHRVYRRAQMIDKILDPAASVPSVFI EPRKSSRMKRSKPRRKHQVNGCPADA EKDRLIT  
 TDSDGTYKRPPGVHNSAYIGCPSPDPLADVQTPSSTELGRYPGLPFSASQYIP PQPSIEEARQTMHSL  
 DDAFALVAPSSQPTNAMAGTGPASLPVNSTPSREERRATQWGSFYSPAQTANNPCSR YEDYGMTPPSG  
 PLPSRPSFGPGLLPSELVPEPPQPQSSDAPYAARGIYSEEMP SVARPRPVGGTTGSQIQHLTQVGIA  
 SRIGAQPVEIPAGRSQYGGPGWPVYGE EEAAGRREATHMLGHQEYSSSPLFQVPRTSGREPSAPPGNLAH  
 RGLQGPGLGYPTSTEDLQPGHSSASLIKAI REELLRLSQKQGSVQNFHS

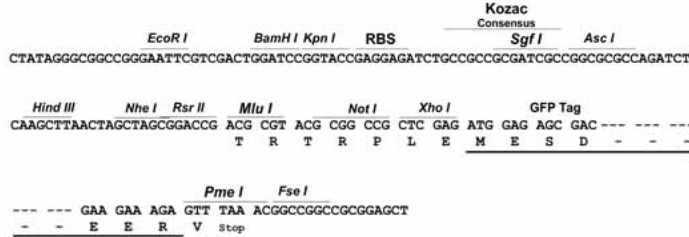
SGPTRRRLE - GFP Tag - V

**Restriction Sites:**

SgfI-RsrII

Cloning Scheme:

Cloning sites used for ORF Shuttling:



ACCN: NM\_194061

ORF Size: 5820 bp

OTI Disclaimer: The molecular sequence of this clone aligns with the gene accession number as a point of reference only. However, individual transcript sequences of the same gene can differ through naturally occurring variations (e.g. polymorphisms), each with its own valid existence. This clone is substantially in agreement with the reference, but a complete review of all prevailing variants is recommended prior to use. [More info](#)

OTI Annotation: This clone was engineered to express the complete ORF with an expression tag. Expression varies depending on the nature of the gene.

Components: The ORF clone is ion-exchange column purified and shipped in a 2D barcoded Matrix tube containing 10ug of transfection-ready, dried plasmid DNA (reconstitute with 100 ul of water).

**Reconstitution Method:**

1. Centrifuge at 5,000xg for 5min.
2. Carefully open the tube and add 100ul of sterile water to dissolve the DNA.
3. Close the tube and incubate for 10 minutes at room temperature.
4. Briefly vortex the tube and then do a quick spin (less than 5000xg) to concentrate the liquid at the bottom.
5. Store the suspended plasmid at -20°C. The DNA is stable for at least one year from date of shipping when stored at -20°C.

**Note:** Plasmids are not sterile. For experiments where strict sterility is required, filtration with 0.22um filter is required.

**RefSeq:** [NM\\_194061.3](#)

**RefSeq Size:** 10986 bp

**RefSeq ORF:** 5823 bp

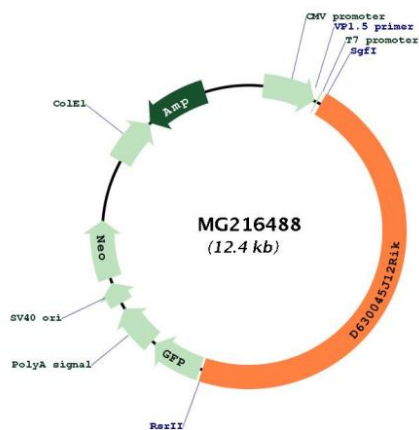
**Locus ID:** 330286

**UniProt ID:** [Q68FD9](#)

**Cytogenetics:** 6 B1

**Gene Summary:** May play a role in photoreceptor function.[UniProtKB/Swiss-Prot Function]

### Product images:



Circular map for MG216488