

## Product datasheet for **MG216478**

### **Sec16b (NM\_033354) Mouse Tagged ORF Clone**

#### **Product data:**

<b>Product Type:</b>	Expression Plasmids
<b>Tag:</b>	TurboGFP
<b>Symbol:</b>	Sec16b
<b>Synonyms:</b>	Lztr2; Rgpr; Rgpr-p117
<b>Mammalian Cell Selection:</b>	Neomycin
<b>Vector:</b>	pCMV6-AC-GFP (PS100010)
<b>E. coli Selection:</b>	Ampicillin (100 ug/mL)



[View online »](#)

ORF Nucleotide Sequence: >MG216478 representing NM\_033354  
Red=Cloning site Blue=ORF Green=Tags(s)

TTTTGTAATACGACTACTATAGGGCGCCGGGAATTCGTGCGACTGGATCCGGTACCGAGGAGATCTGCC  
GCCGGATCGCC

ATGGAACCTTGGGTTCCCCACACACAAGGAAGGACCACGGGACCATCAAGGGATACAATAGAGGACTTC  
AGAGTGAGCATTATAGACCCCGTCCGCATTCTCAGTACAGTGGAGATAAGTACCACCAATGGCAAGATGC  
CCACAAGAAGTCAAAGTACAGCAGGACCTCAGGGATGACCACCAACAGTCTCACTCTGTATCCAGGAGT  
GGGGAGTGGTCCCAGCCTGTGTCTGGTGTGACTACTTGAAGGATCTTATCCCAGTCACTGTACTCAA  
GGTCAGGCTATGGGGACCCCTATCAGAGGTACACACTCCGACACCGAGGGATGAGTATGCTTATGGAAA  
TTACTACTACCACGGACATCCACAGCTGCTGCCGGAAGAAAGATGGCAAGGCAAGGGAGTCTTATATC  
TGGCATGAAGATCATGGAGACCAGAGTACTTCGGCGAGCATCATCGGGAGAAGCACAAATGTTACATTTG  
GAGCAAACAGTGATACCCAGTTCCAATTTACCAGTAAGAATCCATACCGAGACAGCCCTGCTTCTGTGTC  
TGGACAGGAACAGCCTGGGGAATTCCTCCAGAGAGTGAAGCCAGAAAACAAAGCCATTGCTGACCAGC  
AAATCCAGCCTTCTCCAGCAGCACGAGTCTGGGCTCAGCTCTAGTAGCTACGAGCTCAGTACATACGA  
CAGTCCCCCGAGGAGTATGAACCTATGGTGTGAGCAGCTGGAGGCCTATTCAGGCTGATGACACCTC  
AGCGACAGTTCAAAGGCACCTATGAGGTTCTATGTTCCCATGTGTCTGTGAGCTTGGGGCAGGAGGC  
CAGTGTGTGTGTCCCCCAACTCTCCTGCTGATGGACAAACGGCCCTCGTTGAAGTGACAGCATGG  
AGGTTTTACTTAATGATTTGAGGATCAGGAGGAGATGAGAGCTTTCCAGGGCCCTTATTAGGGAGGA  
CATACACAAGTGGATATCATGACGTTTTGTGTCAGCAGAAAGCAACGAGTGTCTCAAATCTGAGACACCA  
GGGAGCAGAGACTCAGCTCTACTTTGGCAACTGCTGGTTCTCCTTTGTCGACAGAATGGGTCCATGGTGG  
GATCTGACATTGCTGAGCTGCTGATGCAGGACTGCAAGAAGCTGGAGAAGTACAAGAGGCAGCCCCCTGT  
AGCCAACTCATCAACCTGACTGACGAGGACTGGCCGCTACTGAGCTCTGGGACTCGTGATCTCCTCACT  
GGGGAGATTCACCAATGTGGATACGCCAGCGCAGATCGTGGAGAAAATCACCAAGCTGCTCTACTACG  
GAAGGAAGAAGGAGGCTTTGGAGTGGGCTATGAAGAACCCTGTGGGGACATGCCTTGTTCCTAGCCAG  
TAAGATGGACCAAGGACCTACAACCTGGGTCATGAGTGGTTTACCAGTACGCTGGCGCTCAATGACCCCT  
CTGCAGACCCCTTCCAGCTCATGTGAGGAAGGATTCCACAAGCAGCCAGGTTTGTGGAGACAAACAGT  
GGGGAGACTGGCGGCCCACTTGGCTGTGATCCTGTCAAATCAGGCTGGAGATACAGAGTTGTACCAGCG  
AGCGATTGTGACGATGGGGATACCCTGGCTGGAAAAGGGCTTGTGGAGGCATCTCACTTCTGCTATCTC  
ATGGCTCATGTGCCCTTTGGTCACTATACGGTGAAGACAGATCATCTGGCCTTGGTGGGCAGTAGCCACA  
GTCAAGAGTTTATGAAATTTGCAACAATTGAGGCTATCCAGCGGACGGAAATCTTCGAGTACTGCCAGAT  
GCTGGGCCGCCCAATCCTTCATCCCTCTTTCCAGGTGTATAAGCTCCTCTATGCCTCCCGTCTGGCA  
GATTATGGCCTGGCATCCCAGGCTTGCTTACTGTGAAGCCATTGGTGCAGCTGTCTTGAGCCAGGAAG  
GGAGCAGCCACCTGTGCTATTAGCGGAGCTCATCAAGCTCGCAGAGAACTGAAGCTGTGAGTCTCCTCT  
GGTTTTAGAAAAGACGCCGTGGGGACAGGGACCTGGAACCAGATTGGCTTGTGCAACTCGGGAGGAAGCAC  
AAGGACCTGGAGCAAAATAGAACAGGAGCCCTGAGAGATCCTGATTCGACTCCTTCAGATATTTATGGAG  
CTGGAGGAACAACAGACTCCCTACCCTGATCTCTCTGGCCATCAAACCTACTCAGAAGACTCTGAGTA  
CAGCTCCACCTTGTGGTCAACAGCAGAGCAGACAAGCCTGACCAATCCCCTCGCACAGCAGTCTTTCCCC  
CTGCAGCGAGATACCTATTAGGACACATGGGAACCCAGTGCCTCTCTACTCAGTTCTGCAACCCACT  
TGGCAGTGACGAGTGGAGCCAGTGGTAGCAGTGTGGCAGTACGGGGACTCCTGGGGGAAGGGTTGGAGA  
GGATATGCTGCGGACACATCCTGCCTTTGGAGAGAACAATGACTCAAGAACCCTGGAAGATCCTGAT  
GGTCTCGAAGTCATTTCCAGTCTTCCAGACACCAGCAGCTCCAGGGTTCCAAGTTTTTCTGAGGATTCTG  
CTGCTTCAGCCAAGGAGGATGAGGAGGGTCTTCTGATGGAGCAGACAAACCTCAACCCGATGCTTC  
ACAGAAAAGGAAAGCTGGGAGATGGGAAGAATACAAGAGCTCGGGATTCGGCTGGTTGAGTGGTTTCGA  
TCAAAGCCTGCCAGCAGTGTGTCCACCTCTGGAGATGAAGACTCCTCGGACAGTTCTGACTCAGAGGAGT  
CTCCCAGAGCATCTCCTCCTACCATGCGAGCCAGGCCTCTACCAACACCTCCTCTCACATCCCCTATC  
CCTGCCAGGTGCCAGCCTTCTCGAGAGGCACAGGTGGGAGTATTCTCCAAGGATCCTCAAACAGTAGT  
GGAATCGTGAAGGCATGGGGATTGGAGGGTTCTCGGGGACACAGGGTGTTTCTTCTGAGTTCTACTCCC  
AGCCTGGTGCCTGCTCCTCCGCCTACCTTGAAGGTGCTGTTCTCTCTACAATCCATCTCAGGTCCC  
TCAGCTTCCCAGTCTAGTAGCCTGAACCGCCAAACCGCTAGCCAGCGCCGCTACCAACCCAGCCA  
TGC

ACGCGTACGCGGCCGCTCGAG - GFP Tag - GTTTAA

**Protein Sequence:** >MG216478 representing NM\_033354  
 Red=Cloning site Green=Tags(s)

MEPWPHQTQGRRTGPSRDTRNGLQSGHYRPRPHSQYS GDKYHQWQDAHKNSKSQQDLRDDHQSSHVSRS  
 GEWSQPVSGADYLKGSYP SHLYSRSGYGDYQRYHTPTPRDEYAYGNYYHGHPLQPEERVARQGSPI  
 WHEDHGDQRYFGEHHREKHNGTFGANSDTQFQFTSKNPYRDS PASVSGEQPGEFFPESEAQKQKPLLT  
 KSSLLQQHESGLSSSSYELSQYMTAAPEEYEPMVSAAWRPIQADDTSATVPKAPMRFVYPHVSVSFGPGG  
 QLVCPVPPNSPADGQTALVEVHSMVLLNDFEDQEEMRAFPGPLIREDIHKVDIMTFCQKATQCLKSETP  
 GSRDSALLWQLVLLCRQNGSMVGS DIAELLMQDCKKLEKYRQPPVANL INL TDEDWPVLSSTGRDLLT  
 GEIPNVDPQAQIVEKFTKLLYYGRKKEALEWAMKNHLWGHALFLASKMDPRTYNWVMSGFTSTLALNDP  
 LQTLFQLMSGRIQAAATVCGDKQWGDWRPHLAVILSNQAGDTELQRAIVSMGDTLAGKGLVEASHFCYL  
 MAHVPFGHYTVKTDHLALVSSHSQEFMKFATIEAIQRTEIFEYCQMLGRPKSFIPSFQVYKLLYASRLA  
 DYGLASQALHYCEAIGAAVLSQEGSSHPVLLAELIKLAEKLLSDPLVLERRRGDRDLEPDWLVLRRKH  
 KDLEQNRGTALRDPDSTPSDIYAGGTTDTPYDLSGHQNYSEDSEYSSTLWSTAEQTS LNPLAQQSFP  
 LQRDTYSGHMGTPVPLYSVPATHLAVTSGASGSSVAVTGTPGGRVGEDMLRTHPAFGENTMTQEPLEDPD  
 GLEVISSLQTPAAPRVPSFSEDSAAAKEDEEGSSDGADKPSHPDASQKGLGDGKNTKSSGFGWFSWR  
 SKPASSVSTSGDESDSSDSEESPRASPPHASPGLSPTPPLTSPSLPGASTFSRGTGGSI LQGSNSNS  
 GIAEGMIGGFSGTQGSSEFYSQPGALPPPPTLQGA VPLYNPSQVQQLPTASSLNRPNRLAQRRYPTQP  
 C

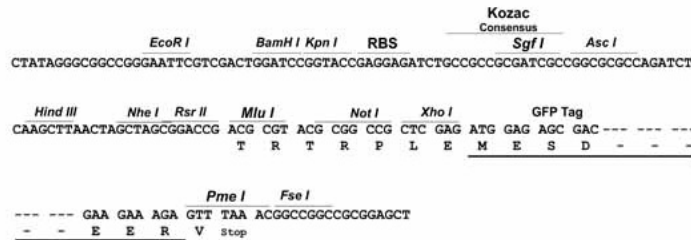
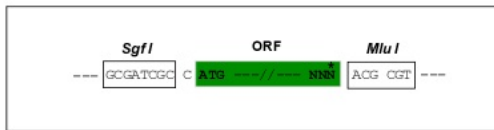
TRTRPLE - GFP Tag - V

**Restriction Sites:**

SgfI-MluI

**Cloning Scheme:**

Cloning sites used for ORF Shutting:

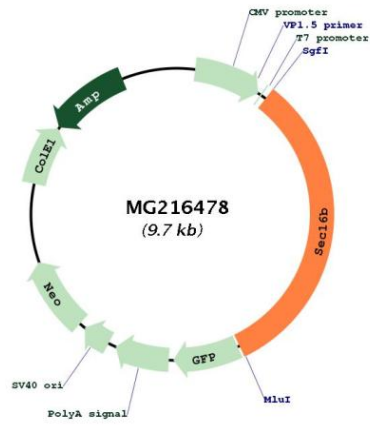


**ACCN:** NM\_033354

**ORF Size:** 3153 bp

<b>OTI Disclaimer:</b>	The molecular sequence of this clone aligns with the gene accession number as a point of reference only. However, individual transcript sequences of the same gene can differ through naturally occurring variations (e.g. polymorphisms), each with its own valid existence. This clone is substantially in agreement with the reference, but a complete review of all prevailing variants is recommended prior to use. <a href="#">More info</a>
<b>OTI Annotation:</b>	This clone was engineered to express the complete ORF with an expression tag. Expression varies depending on the nature of the gene.
<b>Components:</b>	The ORF clone is ion-exchange column purified and shipped in a 2D barcoded Matrix tube containing 10ug of transfection-ready, dried plasmid DNA (reconstitute with 100 ul of water).
<b>Reconstitution Method:</b>	<ol style="list-style-type: none"><li>1. Centrifuge at 5,000xg for 5min.</li><li>2. Carefully open the tube and add 100ul of sterile water to dissolve the DNA.</li><li>3. Close the tube and incubate for 10 minutes at room temperature.</li><li>4. Briefly vortex the tube and then do a quick spin (less than 5000xg) to concentrate the liquid at the bottom.</li><li>5. Store the suspended plasmid at -20°C. The DNA is stable for at least one year from date of shipping when stored at -20°C.</li></ol>
<b>Note:</b>	Plasmids are not sterile. For experiments where strict sterility is required, filtration with 0.22um filter is required.
<b>RefSeq:</b>	<a href="#">NM_033354.2</a>
<b>RefSeq Size:</b>	4611 bp
<b>RefSeq ORF:</b>	3156 bp
<b>Locus ID:</b>	89867
<b>UniProt ID:</b>	<a href="#">Q91XT4</a>
<b>Cytogenetics:</b>	1 H1
<b>Gene Summary:</b>	Plays a role in the organization of the endoplasmic reticulum exit sites (ERES), also known as transitional endoplasmic reticulum (tER). Required for secretory cargo traffic from the endoplasmic reticulum to the Golgi apparatus. Involved in peroxisome biogenesis. Regulates the transport of peroxisomal biogenesis factors PEX3 and PEX16 from the ER to peroxisomes. [UniProtKB/Swiss-Prot Function]

Product images:



Circular map for MG216478