

Product datasheet for **MG216454**

Wdr82 (NM_029896) Mouse Tagged ORF Clone

Product data:

Product Type:	Expression Plasmids
Product Name:	Wdr82 (NM_029896) Mouse Tagged ORF Clone
Tag:	TurboGFP
Symbol:	Wdr82
Synonyms:	9430077D24Rik; CDW5/WDR82
Mammalian Cell Selection:	Neomycin
Vector:	pCMV6-AC-GFP (PS100010)
E. coli Selection:	Ampicillin (100 ug/mL)
ORF Nucleotide Sequence:	>MG216454 representing NM_029896 Red=Cloning site Blue=ORF Green=Tags(s)

TTTTGTAATACGACTCACTATAGGGCGGCCGGAATTCGTCGACTGGATCCGGTACCGAGGAGATCTGCC
GCC**CGATCGCC**

ATGAAGCTGACCGACAGCGTGTCCGGAGCTTCCGCGTCGCCAAGGTGTTCCGCGAGAAGCTCAGACAAGA
TCAACTGCTTTGACTTTAGTCCCAATGGCGAGACGGTCATCTCTAGCAGCGATGATGACTCCATCGTGCT
CTATGACTGCCAGGAGGGCAAACCAAAGAGAACCCTGTACAGTAAGAAGTACGGTGTGGACCTCATCAGA
TACACCCATGCAGCCAACACAGTCGTTTACAGCTCTAACAAAATAGACGATACTATTCGTTACTTGTCTCT
TGCATGACAATAAATACATCAGATACTTCTCTGGACACAGCAAGAGGGTGGTGGCCTTGCCATGTCACC
TGTGGATGACACTTTCATTTCTGGGTCTTTGATAAGACCATTGACTCTGGGATCTCCGGTCTCCTAAC
TGCCAGGGCCTCATGCATCTACAGGGCAAACCTGTCTGTTCTTTGATCCAGAAGGGTTAATTTTTGCTG
CGGGCGTCAACTCAGAAATGGTCAAACCTTATGACCTTCGTTCTTTGATAAGGGACCATTTGCAACATT
TAAGATGCAGTATGATAGGACCTGTGAGTGGACAGGACTTAAGTTCAGCAATGATGGCAAATGATACTC
ATCTCCACCAACGGCAGCTTTATCCGACTGATTGACGCATTCAAGGGTGTGGTATGCACACATTTGGGG
GTTATGCTAACAGCAAAGCTGTGACACTCGAAGCTTCAATTTACTCCAGACTCACAGTTTATTATGATCGG
TTCAGAAGACGGCAAAATCCACGTCTGGAATGGAGAGAGTGGTATAAAAGTGGCTGTATTGGATGGCAA
CACACTGGTCCCATTACCTGTTTGAATTC AACCCCAAGTTTATGACCTTGCCAGCGCCTGTTCCAACA
TGGCCTTCTGGTTGCCACCATTGATGAC

ACGCGTACGCGGCCGCTCGAG - GFP Tag - GTTTAA



[View online »](#)

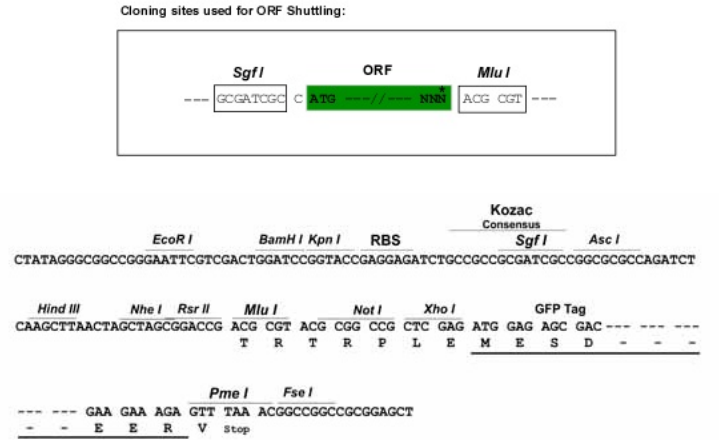
Protein Sequence: >MG216454 representing NM_029896
 Red=Cloning site Green=Tags(s)

MKLTDSVLRFRVAKVFRENSDKINCFDFSPNGETVISSDDDSIVLYDCQEGPKPRTLYSKKYGVDLIR
 YTHAANTVYSSNKIDDTIRYLSLHDNKYIRYFPGHSKRVVALSMPVDDTFISGSLDKTIRLWDLRSPN
 CQGLMHLQKPVCSFDPEGLIFAAGVNSEMVKLYDLRSFDKGPFAATFKMQYDRTCEWTGLKFSDGKLIIL
 ISTNGSFIRLIDAFKGVVMHTFGGYANSKAVTLEASFTPDSQFIMIGSEDGKIHVWNGESGIKVAVLDGK
 HTGPITCLQFNPKFMTFASACSNMAFWLPTIDD

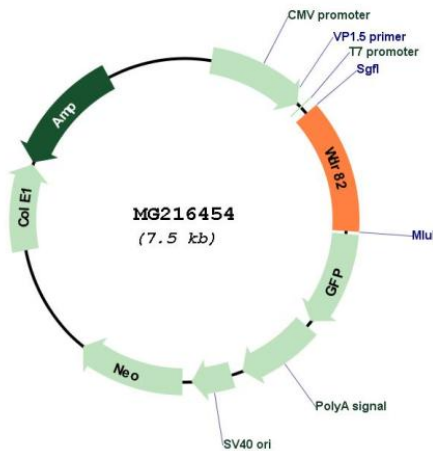
TRTRPLE - GFP Tag - V

Restriction Sites: SgfI-MluI

Cloning Scheme:



Plasmid Map:



ACCN: NM_029896

ORF Size: 939 bp

OTI Disclaimer:	The molecular sequence of this clone aligns with the gene accession number as a point of reference only. However, individual transcript sequences of the same gene can differ through naturally occurring variations (e.g. polymorphisms), each with its own valid existence. This clone is substantially in agreement with the reference, but a complete review of all prevailing variants is recommended prior to use. More info
OTI Annotation:	This clone was engineered to express the complete ORF with an expression tag. Expression varies depending on the nature of the gene.
Components:	The ORF clone is ion-exchange column purified and shipped in a 2D barcoded Matrix tube containing 10ug of transfection-ready, dried plasmid DNA (reconstitute with 100 ul of water).
Reconstitution Method:	<ol style="list-style-type: none">1. Centrifuge at 5,000xg for 5min.2. Carefully open the tube and add 100ul of sterile water to dissolve the DNA.3. Close the tube and incubate for 10 minutes at room temperature.4. Briefly vortex the tube and then do a quick spin (less than 5000xg) to concentrate the liquid at the bottom.5. Store the suspended plasmid at -20°C. The DNA is stable for at least one year from date of shipping when stored at -20°C.
RefSeq:	NM_029896.1 , NP_084172.1
RefSeq Size:	4313 bp
RefSeq ORF:	942 bp
Locus ID:	77305
UniProt ID:	Q8BFQ4
Cytogenetics:	9 F1
Gene Summary:	Regulatory component of the SET1 complex implicated in the tethering of this complex to transcriptional start sites of active genes. Facilitates histone H3 'Lys-4' methylation via recruitment of the SETD1A or SETD1B to the 'Ser-5' phosphorylated C-terminal domain (CTD) of RNA polymerase II large subunit (POLR2A). Component of PTW/PP1 phosphatase complex, which plays a role in the control of chromatin structure and cell cycle progression during the transition from mitosis into interphase. Possible role in telomere length maintenance and in mRNA processing (By similarity).[UniProtKB/Swiss-Prot Function]