

Product datasheet for **MG216449**

Tspoap1 (NM_172449) Mouse Tagged ORF Clone

Product data:

Product Type:	Expression Plasmids
Product Name:	Tspoap1 (NM_172449) Mouse Tagged ORF Clone
Tag:	TurboGFP
Symbol:	Tspoap1
Synonyms:	Bzrap1; D230016K05; mKIAA0612; PRAX-1
Mammalian Cell Selection:	Neomycin
Vector:	pCMV6-AC-GFP (PS100010)
E. coli Selection:	Ampicillin (100 ug/mL)
ORF Nucleotide Sequence:	>MG216449 representing NM_172449 Red=Cloning site Blue=ORF Green=Tags(s)

TTTTGTAATACGACTCACTATAGGGCGGCCGGAATTCGTCGACTGGATCCGGTACCGAGGAGATCTGCC
GCC**CGATCGCC**

ATGGAGCAACTGACAACCCTCCACGGCTTGGAGACCTTGGAGCCATGGAGCCATGGGCACTGCCTGCCT
GGCAGCACTGGACTCAGGGCCAGGGGTGCAAACCTGGAGATGCATCTCCAAGCATTGCTGGTACTCCGAC
AGCTCTGCAGGTTAAAGGATTGAGTTTGAAGAGAGTTCCAAGCCTGAGGGAGCTCATAGCCCTGGACCT
GTCGGAATACTGATCCTGAAGCAACAGAGACCGGGCTGCCTAAGCTGGGGCAGCAAGCAGAGAGCCCTG
GGTACAGCTGTTCCGGGCTGGAGGAGGAGGACAGGCTTATAAGGCCAAGTTCAACATAGGCTTCGG
GGACAGGCCTAATCTGGAGCTGCTAAGGGCCCTGGGAGAGCTGCAGCAGCGCTGTACCATCCTGAAGGAG
GAAAACAGATGCTGAGAAAAAGCAGCTTCCCAGAGACGGAGGAGAAGGTACGGAGGCTGAAGCGGAAGA
ATGCTGAACTGGCAGTCATTGCCAAGCGCTGGAGGAGAGGGCACAGAAGCTGCAGGAAACGAACATGAG
GGTGGTGAAGTGCCTGTGCCCGACCCGGATCCAGTTTGGAGTTGTGCCGTAAGGCTCTAGCTCGCCAG
CGAGCCCAGACCTCAGTGAGACAGCCAGTGCCTGTTGGCAAGGACAAACAGATTGCTGCCTTGACAGC
GGGAGTGCAGGGAGCTGCAGGCCAGACTCTCTGGTGGCAAGGAAGTCCCAGTGGCTGCATATGCC
GGACTTCGACCGTGTGTCGCGAGTCCCAACGGGAGGTGCTGCGGCTGCAGAGGCAGATCGCCCTGCCG
AACCAAGCGGAGCCGCTCCGGCTGCCCGGTCCCGGGTCTACTGCCCATCTAGAGTAGGGGCGCCG
CCCCCGGGCCCCGGGAGAGGCCGTAATTCAGGATGATGTGGAGAGCCACAGGTAAGTCTAAGGGAACC
AGAGAAGCAGCAAAGGGTGCAGCAGCTGGAGTCTGAGCTCTGCAAGAAGCGAAAGAAATGCGAGAGTCTG
GAGCAGGAAGCCAGGAAAAAGCAGAGGCGATGTGAGGAGCTGGAGCTACAGCTGAGGGCAGCCAGAAATG
AAAATGCCCGCTGGTGGAGGAGAACTCTCGGCTCAGTGGGAGAGCCACAGAGAAGGAGCAGGTGGAATG
GGAGAATTCGGAGCTGAAGGGACAGCTCCTGGGGTGACACAAGAGAGGGACTCGGCCCTCTTAAGAGC
CAGGGCCTGCAAAGCAAGCTGGAGAGCTGGAGCAGGTGCTGAAGCATATGCGGGAGGTGGCCAGCGCC
GGCAGCAGCTGGAGGTGGAGCATGAGCAGGCTAGGCTCAGCTGCAGGAGAAGCAGGAGGAGTCCGGAG
GCTGCAGCAGGCCAGGCAAGCAAGAGGGAACATGAGGGAGCCGTTACGCTGCTGGAGTCTACCTTG



GATTCCATGCAGGCCCGGGTTCGAGAGCTTGAGGGCCAGTGCCGAAGCCAGACTGAGCGTTTCAGCCTTC
 TGGCTCAGGAGCTCCAGGCCTTCGCTGCACCCAGGCCCTCTGGATCTGCTTACTTCAGCCTTGGGCTG
 TAGTGCCCTTGGGGACCACCCGCCCCCACTGCTGCTGCTATCCCTCAGCCCTGCCAGGGGTCCGGC
 CCCAAAGATCTTGACCTCCCACCGGGCTCCCAGGACGCTGCACCCCAAATCTTCTGAACCTGCTCTCA
 CCACCTTACTGGAATCCCTCGAAGGACAGCTAAGAAGCCGAGTCTCTTCTAATTCTTCTCGCTCAGA
 GTCCATCCACAACAGCCCAAGTCATGTCCACACCAGAGGTGGACACAGCCAGTGAGGTGGAGGAACTG
 GAGGTAGACAGTGTTCCTGCTCCCAGCAGCTCCGGAGAGTCACTCGGGAGGAGCCAGAAATCCAGTCT
 TCCTAGCACGCTATAGCTACAACCCTTTGAGGGTCCCAATGAGAATCCAGAGGCCGAGCTTCCTCTGAC
 AGCGGGCGAGTATATCTACATCTATGGTAACATGGACGAGGATGGCTTTTTTGAAGGGGAGCTCATGGAT
 GGCCGAAGGGGCTGGTCCCTTCCAACCTTGTAGAGCGCGTGTCTGATGATGATCTTCTGTCCACCTCC
 CTCGGGAGCTGGCTGATTCGTCGCACAGCTCAGGCCCGAGCTCAGTTTCTGAGTGGAGGCGGGGTGG
 TTGCAGTAGTGGGGCCAGAGCAGCGGGGACGTAGCCAGCCAGACCAGAGGAGGAGGCCCGAGGAGAT
 GAACTCAGTCTGAGCCCCCACCAGAGGGACTTGGCGAGCCTCTGGCTGTGCCTTACCCCGACACATCA
 CGGTTCTCAAGCAGTTAGCCACAGTGTGGTGTGGCCTGGGAGTTGCCTCCTGAGAGAGTAGATCTGCG
 TGGCTTCCATATCTTTGCAATGGGAACTCCGTAGGCCCTTGGGGCCTGGGGTCCCCCAAGCTGTG
 CTTGAAAACATGGACCTGCGGACTGGGCCTCTCCATGTGTCTGTCCAGGCCCTAACCCAGCAAGGGCAGCT
 CAGACCCTCTGCGCTGTTGCCTGGCTGTGGGTGCCGGGGCTGGGGTGGTACCCAGCCAGCTGCGGATCCA
 TCGGCTGACAGCCACATCTGCTGAGATCGCTGGGTGCCGGGAATAGCAACTTGGCCCATGCCATCTAC
 CTCAATGGAGAAGAGTGGCCACCTGCTCGCCCCAGCACATATTGGGCAACCTTTTGTAACTGAGACCTG
 GCACACTCTATCAGGCCCGAGTGGAGGCTCAGATCCCATCTCAGGGGCCCTGGGAACCAGGCTGGGAGAG
 GCCAGAGCAGAGAGCTGTACCTTGCAGTTCACCACACTCCAGCAGGTCTGCCTGATGCCCCACTGGAT
 GTACAGGCTGAACCAGGACCCTCTCTGGAATCTTGATGATCAGTTGGCTCCCTGTCACCATTGATGCTG
 CTGGTACCTCCAATGGTGTCCGGTTACAGGCTATGCCATCTATGCTGATGGGCAGAAGATTAGGAGGT
 GGCTTCCCCACAGCAGGCACTGTGCTGGTGGAGGTGTCCAGCTGCAGCTGTTGCAGGCCCTGCCATGAG
 GTGACTGTACGCACTATGTACCCCATGGCGAGTCCAGTGACTCCATCCCAGGCCCGGTTGCCCCAGCCC
 TGGCTTCTGCCTGCCAGCCAGCCAGGATGTCCTGTCTCTCACCACGACCAAGCCAGAGGTGAGAACACC
 CCTTGCTCAGTCTCCCCAGGGCTTGGGGATACCAGCTTTCCTCCGGCATCTGTCCCCCATGGAACCT
 CAAGATTTCTCTGCAAGTCTTCCATAGAGATGTCAAAGGACCCAGGAGGAACCTCCAGTCCCTTGTCT
 CTCAGGAAGAGGCTGGGGCAGCTGTGCGGAGCATCTCAGAAGAGAAGAGGGCTATCGAGCCAACTCTGGG
 CCAGGAAGGCCCTGAGCCTGTGGCTCCTTCCCTGGCTAAGCAGGAAGTGGAGTGCATTCAGGAGATGCT
 GGCCTGTACCTTGTCCACCAAGGAGAGCTGACCCAGAAGAAGCAAGTATTGAAGCCTGCCATGGGG
 GAGATCTGGACTCCGGGCTGAAACTTAGATCTGAGAAAGAAGATATGTCAGAGCTTGGAGTTCACCTGGT
 GAATCCCTTGTGGATCACAGCCCAACTCAGACTTATCAGACATCCAGGAAGAAGAGGAAGAGGAGGAA
 GAAGAGGAAGAGGAACTGGGTTCCAGGCCTTGTCTCCTCCAGAAGCAGGTTGCTGGCAACAGCATCAGGG
 AGAATGGAGCCAAGCCCCAGCCAGACCCCTTTGTGAGACTGACAGCGACGAGGAGATCTTGGAGCAGAT
 ACTGGAGTTGCCTCTCCAGCGGCTCTGCAGCAAGAAGCTGTTGAGCATCCCTGAGGAGGAAGAGGAGGAG
 GAAGAGGAGGAAGGGCTGGAGAAACCAGGGCCAGCCGCACTTCCAAGACCCTAGCCAGCCTGAACTTG
 CGTTGCTAGGGCCGGGCTGTGATAGCAGTACAGCCAGGGACCTGGCCTGTGTCCCTTGTCTCCTGAGCT
 CTCTGGGGTCAGGGAGCACCTGGAGGATGTGCTGGGAGTCGTTGGTGGAAACGGCAGGAGGAGAGGAGGT
 GGCTCCCCGAGAAACTCCAAACCAGCAAGCGACCTCAGGACCCCGAGAACATTGCAGCCGGCTTCTTG
 GCAATGGCGGGCCCCAGGCCTCTGCACGGCCGGTCCCTCCAGGGAGAGGGGAGCCTCCCTGTGATTGA
 GGGCACCAGGGTTGGACAGGAGCCCGTGGGAGAGGGCGCCGGGTCTTCCCGAGGTGTCCCCGTGGC
 CCTGCTCCAGAATCCAGCTTAGTCAGCTGCCTCTCTCAAAGTGTGGAGATCAGTATTGAATATGATT
 CTGAGGATGAGCAGGAGGCGGCAGCGGGGTGTGAGCATCAACAGCTCCTGCTACCCACAGATGGGGA
 GGCCTGGGGCACAGCGGCACTAGGAAGGCCAGGGGACCTCCGAAGGTCAATCCAGGCCCAACCGCTAC
 CTGCGCCTCCCAGCCTGGGAGAAAGGGGAGCCAGAGCGGAGAGGCCGAGTGCATTGGCAGAACCAAGG
 AGCCACCTCCCCGGCAACAGAACTGGGGAGTCCAGAGGGCAGGACAACCTTGGGCGGAGAGGACCCCA
 GAGGAGAGGGGCCGGGTGCCTAGGTCTGGTACCACTGAGCTGGCCCTCCAAGGAGCCCCAAGAAGCA
 CCACCTCATCAGGACCTGCCTGTGAGGGTCTTTGTGGCTCTGTTGACTATGACCCTGTATCAATGTCAC
 CGAACCTGATGCCGGAGAAGAGGAACTGCCCTTAAGGAGGGCCAACCTCCTCAAGGTGTTTGGAGACAA
 GGACGCTGATGGTTTCTACCGGGGTGAGAGTGGGGCCGTACAGGCTACATCCCCGCAACATGGTGGCT
 GAGGTGGCTGTGGACAGTCCAGCAGGGAGACAACAGCTGCTCCAGCGGGTCTTGGCCCCAAATGTTT

TCACCGAGGCTCAGGAAATGGTCCCTCTGTGTACTCCTCAGCACACACCCGGGCTCCCCCAAGCC
 TCGTCGGTCCAAGAAAGTGGAGCTGGAAGGTCCTACACAGCTCTGTCCAGGTCCTCTAAGCTGATTCAT
 TCTGCTGCCAGAAAACCTCCCGACCTATGGTGGCTGCATTTGACTATAATCCTCGGGAGAACTCCCCCA
 ATATGGATGTGGAGGCAGAGCTGCCCTCAGAGCAGGGGATGTCATTACTGTGTTTGGGAACATGGACGA
 TGATGGTTTCTACTATGGGGAGCTGAATGGACAAAGGGGCTGGTTCCATCCAACCTCTGGAAGGCCCT
 GGGCTGAGTCAGGCAGCCTAGAGTCTGGGACATCTCAAGCCGAGAGTCAGAGAACGAGGAGGAGAAGAG
 TCCAGTGC

ACGCGTACGCGGCCGCTCGAG - GFP Tag - GTTTAA

Protein Sequence:

>MG216449 representing NM_172449
 Red=Cloning site Green=Tags(s)

MEQLTTLPRLDLGAMEPWALPAWQHWTQGGCKPGDASPSIAGTPTALQVKGLRFEESKPEGASPGP
 VGNTDPEATETGLPKLGQAESPYSGLSEEEEAQAYKAKFNIGFDRPNLELLRALGELQQRCTILKE
 ENQMLRKSSFPETEKKVRRLLKRKNAELAVIAKRLLEERAQKLQETNMRVVSAPVPRPGSSLELCKKALARQ
 RARDLSETASALLAKDKQIAALQRECRELQARLSLVGKEGPQWLHMRDFDRLRESQREVLRLRQRIALR
 NQREPLRPARSPGPTAPSRVGAPAGGAPGEAVLQDDVESPQVVLREPEKQQRVQLESELCKKRKCESL
 EQEARKKQRRCELELQLRAAQENARLVEENSRLSGRATEKEQVEWENSELKGQLLGVQERDSALLKS
 QQLQSKLESLEQLKHMREVAQRRQLEVEHEQARLSLQEKQEEVRRLLQQAQAEAKREHEGAVQLLESTL
 DSMQARVRELEGQCRSQRTERFSLLAQELQAFRLHPGPLDLLTSALGCSALGDHPPPHCCCSIPQPCQSGG
 PKDLDLPPGSPGRCTPKSSEPALTTLTGIPRRRTAKKAESLSNSSRSESIHNSPKSCTPEVDTASEVEEL
 EVDSVSLLPAAPESSHSGGARIQVFLARYSYNPFEGPNENPEAELPLTAGYIYIYGNMDEDFEGELMD
 GRRGLVPSNFVERVSDDDLLSTLPRELADSSHSSGPELSFLSGGGGCSGGQSSGGRSQRPPEEEAAGD
 ELSLSPPEGLGEPLAVPYPRHITVLKQLAHSVVLAWELPPERVDLGRGFHIFVNGELRQALGPGVPPKAV
 LENMDLRTGPLHVSVALTSKGSDDLRCCLAVAGAGVPSQLRIHRLTATSAEIAWVPGNSNLAHAIY
 LNGEPCPARPSTYWATFCNLRPGTLYQARVEAQIPSQGPWEPGWERPEQRAATLQFTTLPAGLPDAPLD
 VQAEPGSPGILMISWLPVTIDAAGTNGVVRVTGYAIYADGQKIMEVASPTAGSVLVEVSQLQLLQACHE
 VTRTMSPHGESSDSIPAPVAPALASACQPARMSCLSPRPSPEVRTPLASVSPGLGDTSFPLRHPVPHGT
 QDFSASLSIEMSKGPQEEPPVPCSQEEAGAAVRSISEEKRAIEPTLQEGPEPVAPSLAKQEVECTSGDA
 GPVPCSTQGELTQKKPSIEACHGGDLDSGLKLRSEKEDMSELGVHLVNSLVDHRSNSLSDIQEEEEEEEE
 EEEEEELGSRPCSSQKQVAGNSIRENGAKPQDPFCETDSDEEILEQILELPLQRLCSKCLFSIPEEEEE
 EEEEELEKPGPSRTSQDPSQPELALLGPGCDSSQPQGGPLCPLSPELSGVREHLEDVLGVVGGNRRRRGG
 GSPEKLPNRKRPQDPREHCSRLLGNGGPQASARPVPPRERGLPVIEGTRVQEPGGRGRPGLSRRCPRG
 PAPESSLVSCLSPKCLEISIEYDSEDEQAGSGGVSINSSCYPTDGEAWGTAAVGRPRGPPKVNPGPNAY
 LRLPAWEKGEPEERRGRSAIGRTKEPPSRATETGESRGQDNSGRRGPQRRGARVPRSGTTELPAPRSPQEA
 PPHQDLVVRVVALFDYDPVMSPNPDAGEEELPFKEGQLLKVFGDKDADGFYRGE SGGRTGYIPCNMVA
 EVAVDSPAGRQQLLQRGFLPPNVLTEASNGGPSVYSSAHTPGPPPKPRRSKKVELEGPTQLCPGPPKLIH
 SAAQKTSRPMVAADFYNPRENSPNMDVEAELPFRAGDVITVFGNMDDDGFYYGELNGQRGLVPSNLFLEGP
 GPESGSLESGTSQAESQRTRRRRVQC

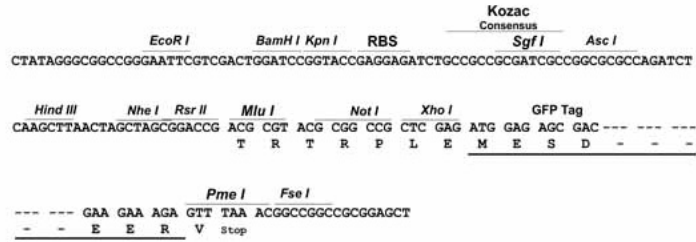
TRTRPLE - GFP Tag - V

Restriction Sites:

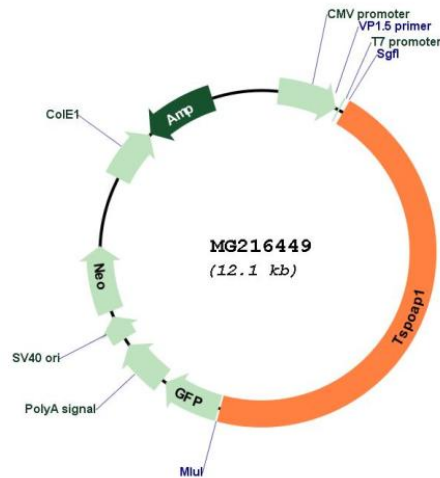
SgfI-MluI

Cloning Scheme:

Cloning sites used for ORF Shutting:



Plasmid Map:



ACCN: NM_172449
 ORF Size: 5538 bp

OTI Disclaimer:	The molecular sequence of this clone aligns with the gene accession number as a point of reference only. However, individual transcript sequences of the same gene can differ through naturally occurring variations (e.g. polymorphisms), each with its own valid existence. This clone is substantially in agreement with the reference, but a complete review of all prevailing variants is recommended prior to use. More info
OTI Annotation:	This clone was engineered to express the complete ORF with an expression tag. Expression varies depending on the nature of the gene.
Components:	The ORF clone is ion-exchange column purified and shipped in a 2D barcoded Matrix tube containing 10ug of transfection-ready, dried plasmid DNA (reconstitute with 100 ul of water).
Reconstitution Method:	<ol style="list-style-type: none">1. Centrifuge at 5,000xg for 5min.2. Carefully open the tube and add 100ul of sterile water to dissolve the DNA.3. Close the tube and incubate for 10 minutes at room temperature.4. Briefly vortex the tube and then do a quick spin (less than 5000xg) to concentrate the liquid at the bottom.5. Store the suspended plasmid at -20°C. The DNA is stable for at least one year from date of shipping when stored at -20°C.
RefSeq:	NM_172449.2 , NP_766037.2
RefSeq Size:	7633 bp
RefSeq ORF:	5541 bp
Locus ID:	207777
UniProt ID:	Q7TNF8
Cytogenetics:	11 C