

Product datasheet for **MG216442**

Dzip3 (NM_001110017) Mouse Tagged ORF Clone

Product data:

Product Type:	Expression Plasmids
Tag:	TurboGFP
Symbol:	Dzip3
Synonyms:	2A-HUB; 2310047C04Rik; 6430549P1IRik; A230104G20
Mammalian Cell Selection:	Neomycin
Vector:	pCMV6-AC-GFP (PS100010)
E. coli Selection:	Ampicillin (100 ug/mL)

ORF Nucleotide Sequence: >MG216442 representing NM_001110017
Red=Cloning site Blue=ORF Green=Tags(s)

TTTTGTAATACGACTACTATAGGGCGCCGGGAATTCGTCGACTGGATCCGGTACCGAGGAGATCTGCC
GCCCGCATCGCC

ATGGATTCTCTAGCAGAAGAATTTTTGTAAGTGGAAATCCTGATGTGGAGGAACAGACCAAGGAAGAAA
CTGAGATTATAGCAGAGAAACAGTCACTCAGCTGGACAAACAGAAAATGGATATATCTGCTGATCCTGA
GCCTGTTAACGCACTATTAGAAATAAAGAAGGTATTAATCCAATCAGTGTCTTCCCAAAGGTGTGTT
CCTAACATTGAAAAGTTCATACAAGAAGATTTCTTTCCAGACTATGCAGAGGGAAGTTACAACATCATA
GCCAGACTGGGGAAGAAATGTTCTGCTCTAACATTACATTTTTGATAACACAACCTGGAATGGCACT
TAGAAAACATTCAAGCTTCTAATTATACTGCACAACAAATTAATGTTGGTTATTTTGCATTACTATTT
TTGATGGAGTGGCACTACTGAAAGAGCAAAAGAAAGAGGACTGCATAGAAGCTGAAAATAAATTTCTGG
TGATGAAGATGGTATCCAAGAAAGTGAGATTTGTGAAAACTTTATGTGTTAGTTTATTTGGACGTGG
TTTACTTCGATGTGCTCAGAAGAGATATAATGGAGCACTACTAGAAATTTACAAAAGCTTACAAGAAATA
GGAGATACAGATGATAATTGTTTGAAGTAGATCCTACAGATGATGAAGATTTACCTACAACCTTCAAAG
ATAGTCTCAATAATTTTATCAAACAACCTGAAAGTAATATAATGAAAGAGACCTTTGCAGTTATCTTGA
TTGTGAGCGTTCTTGTGAAGCTGACATTTAAAGAACCAATTATAAGGGATTTTTCCAGCTAATGTGC
AGTAAAAGTTGCTGTATTTACTTCCATAAAATTTGTTGGAAAAAGTTCAAGAACTTAAAGTATCCAGGAG
AAAGTGATCAGAGTTTTAGTGGGCAAAAATGTTTGAAGAAGGATGTCCAGGTGACATGGTCAGGATGCT
ACAATGTGATGTGCTGGAATTTGCAAAAATTTGTTTGAAGTGGTGAAGGATGAATATATAACCATT
GAAAACCTTAGGAGCAAGTTACAAGAATTTGATGCTCTGGAACCTACTGACACTGATATTAGACCGAAAT
TCAATTTAAAACCAAAACACAAAAGATGAAGTGCCTATCTTCAAACCTTGATTATAATTTCTATCATCT
GCTTACATAAATTATTATTTCTGGTACTGACATGGTCCGGCAAAATTTTGTATGAGGCTATGCCACCCACT
CTTTTAAAAAAGAGCTGCTTATACACAAGAAATGTGCTGGAACCCCTACTACAATCATCTTTGGACCAATC
ACCTTTGGGTGGATCATGGCATCTGCTTTACCCCAAAACAAGGAGCTACCACAGTCCAACAGTTTGA
CTTATGCCTCTTATTAGCGCTCATTAAACATCTGAATGTATTCCTGCACCCAGAAAAGGCTGGGATATG
GAACCACTCTTCTGATCTCTCTAAGTCTGCAGACATTCTGAGGCTCTGCAAGTACAGGGATATCTCTC



TCAGTGAGATTCTGATGAATGGTCTCACCGAGTTACAGTTCAATTCATTTGGAAAAAGTTTCTGATAT
 TCTTCTGCGCCTTGGGATGAAACAAGACGATATTGACAAAGTCAAGGAGAATCCCATTGAGAATATCTCC
 CTTGATTATCATCAGCTGTCCATTTATCTAGGCATACAGTACCAGAAATCATCCAGAGGATGTTATCC
 GCTATCAACAAGGAATTACTCTACAGTCAATAACAGGCAGTCAAGCGTTTATAGTGTAGAAGAGTTCCAGAA
 TGATGAAGAAGACTTGAGTCCACCTGTGATGGAATATAATATCGATGTGAAATCAAACACTGAGATACAG
 TTAGCAGAGATAAATAAAGATGTAGCCTCGATACTAGTGAATCTTCAACAGAATCTGTTAAAGATCTTC
 AGGAGGTCAAAGTAAAACAAAGAAGAAGAAAAGAACTAAGAGTAATAAAAAGGATAAGGATTGAGAAGA
 TGAGCAAGTCTCATATATGGTAGAAAAGGACGACCAGCTGGAGACAGAACAAGTAGAGCTGAACACACTC
 AGTACATACATGAAAACCTGATACAAGTGTGCACAAGAAGATTCTGCAGCTGAGGACAAGTTCTGTAGCC
 TGGATGAAGTGCATATTCTAGATATGGTAGAGCAGGGCTCATCTGGAAAGGAAAGTACAGACTTCAAAGA
 AACTGAAAAGGAAAGGCTTGCATCAACATCAGCTTTATAAATTCAGTATGAATGTGAAGATTACAAA
 AGGCAACTGAAAACAGTGACATTTCCGGTGGCAGGAAAATCAAATGCTGATCAAAAAGAAAAGAAAAGATT
 TTGTATCTCTTAACCAACAAGTGGCTTTTGGGATCAATAAAATGTCCAAATTACAGCGCCAAATCCATGC
 TAAAGATGATGAAATCAAGAACCTTAAAGACCAACTTCTTGGAAAAGATCTCAGTGGGAAATGGAGAAG
 CATAATCTGAAAAGCACAGTTAAACATATTTAAACAACTAAATGCAGAAACCAGCAGAGCCTTAAACAG
 CCGAGGTGACTTTTTACAGTGTCTGAGAGACTTTGGTTTACTACACCTCGAGCAGACAGAAAAGAGTG
 CCTCAATCAGCTGGCCAGGGTGCACACATGGCAGCAAGCAACCTAGAATCACTTCAACTAAAAGCTGCT
 GTAGATAGTTGGAATGCTATTGTGGCGGATGTTTGAACAAGATTGCATTCCTCAGGACACAGTACAATG
 AACAGATCAACAAGTTAAGCAGGGGTTTGCCTTGAGTACCTTGCCTCCAGTCCAGCTTCTCCACCACC
 ACCAAGTCCCTGAGATACTGATACAGCAATTCCTTAGGAAGACCCCTTGTGAAGGAATCTTTCTTTCGACCC
 ATACTTACTGTCCCTCAATGCCTGCAGTTTGCCTGGAGTCACTCTGCAGCTGTACAACCTAGACCAC
 CCCTGATGCCTGGTATAACCTGGGCTATGCCAACACCTATAGGTGATACTGTGTACCAGAGTGAAGTCT
 GTGCAGTGAACCTCTCATGATAAATGGGAGAGGATTACAGACAGGCTGAAAACCTGCTTTTCCACAACAG
 ACAAGGAAAAGAGCTAACAGATTTCTTACAACAGTTAAAGGATTCTCATGAAAAGTCCGTGTCTCGACTGA
 CATTGATGAAATGTTTACAAAATTTCTCAAATGATTGAGCCAAAGAAATCTGAGAGTGAAGAAAAGTCT
 TGCTCAAGATGGCAATAATGCTTCAACCCAGCCACACTGCATCACAGCCTAATGCTCCCAGGACCCCAAG
 TCAGCACAAGGTTCTGCCACATGGGAAGGAGACAAGACATGGATAATGAAGAGGAAGAAGAGGAGCCTT
 GTGTAATCTGTGATGAGAATTTGTCTCCAGAAAACCTTTTCAAGTTTGTGCTCACAAAATTTCACTC
 TCAGTGCATTAGACCATGGTTGATGCAACAGGGCACATGCCCCACCTGCAGACTCCATGTTTGAACCA
 GAAGAATCCCTGGCCACCCCAACGGGCAGTTACCCAAGATC

ACGCGTACGCGGCCGCTCGAG - GFP Tag - GTTTAA

Protein Sequence:

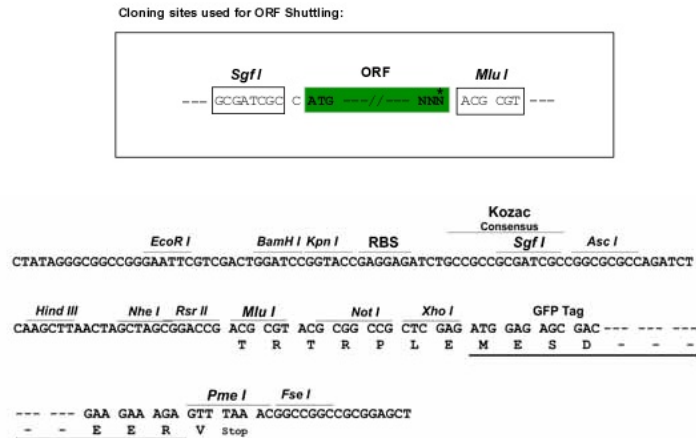
>MG216442 representing NM_001110017
 Red=Cloning site Green=Tags(s)

MDSLAEFFVSGNPDVEEQTEETEIIAEKPVTLQDKQKMDISADPEPVNALLEIKKVLNPIALPKGVF
 PNIKEFIQEDFSFQTMQREVTHSQTGEEIVPALTLHFLITQLEMALRNIQASNYTAQQINVGYYLTLFF
 LYGVALTERAKKEDCIEAENKFLVMKMVIQESEICENFMCLVYFGRLLRCAQKRYNGALLEFYKSLQEI
 GDTDDNWFVDPDDEDLPTTFKDSLNNFIKTTESNIMKETICSYLDRCERSCEADILKNTNYKGFQLMC
 SKSCCIYFHKICWKKFKNLKYPGESDQSFSGQKCLKEGCPGDMVRMLQCDVPGIVKILFEVVRKDEYITI
 ENLGASYKNLMSLELTDDIRPKFNLKPNKDEVPIFKLDYNYFYHLLHIIISGTMVRQIFDEAMPPT
 LLKKELLIHKNVLEPYNHLWTNHPLGGSWHLLYPPNKELPQSKQFDLCLLLALIKHLNVFPAPRKGDWM
 EPPSSDLKSKADILRLCKYRDILLSEILMNGLTELQFNISIWKKVSDILLRLGMKQDDIDKVKENPIENIS
 LDYHQLSIYLGIPVPEIIRMLSCYQQGITLQSIITGSQRLDVEEFQNDDEDLSPVMEYNIDVKSNTIEIQ
 LAEINKDVASIPSESSTESVKDLQEVKSKTKKKRRTKSNKKDKDSEDEQVSYMVEKDDQLETEQVDVNTL
 STYMKTDTSDAQEDSAAEDKFCSLDELHILDMVEQGSSGKESTDFKETEKERLAHQHQLYKLYQYECEDYK
 RQLKTVTFRWQENQMLIKKKEKIIIVSLNQVAFGINKMSKLQRQIHAKDDEIKNLKDQLSLKRSQWEMEK
 HNLESTVKTLYNLNAETSRALTAEVYFLQRRDFGLLHLEQTEKECLNQLARVTHMAASNLESLQLKAA
 VDSWNAIVADVRNKIAFLRTQYNEQINKVKQGFALSTLPPVQLPPPPPSPEILIQQFLGRPLVKESFFRP
 ILTVPQMPAVCPGVISAAVQPRPPLMPGITWAMPPTPIGDTVSPSASLCSEPLMINWERITDRLKTAFFPQ
 TRKELTDFLQQLKDSHGKSVSRLTFDEIVYKISQMIIEPKKSESEEKSAQDGNNASPSHTASQPNAPQDPK
 SAQGSATWEGDKMDNEEEEEPEVICHENLSPENLSVLPCAHKFHFSQCIRPWLMMQGTCTCRLHVLQP
 EEFPGHPNGQLPKI

TRTRPLE - GFP Tag - V

Restriction Sites: SgfI-MluI

Cloning Scheme:



ACCN: NM_001110017

ORF Size: 3612 bp

OTI Disclaimer: The molecular sequence of this clone aligns with the gene accession number as a point of reference only. However, individual transcript sequences of the same gene can differ through naturally occurring variations (e.g. polymorphisms), each with its own valid existence. This clone is substantially in agreement with the reference, but a complete review of all prevailing variants is recommended prior to use. [More info](#)

OTI Annotation: This clone was engineered to express the complete ORF with an expression tag. Expression varies depending on the nature of the gene.

Components: The ORF clone is ion-exchange column purified and shipped in a 2D barcoded Matrix tube containing 10ug of transfection-ready, dried plasmid DNA (reconstitute with 100 ul of water).

Reconstitution Method:

1. Centrifuge at 5,000xg for 5min.
2. Carefully open the tube and add 100ul of sterile water to dissolve the DNA.
3. Close the tube and incubate for 10 minutes at room temperature.
4. Briefly vortex the tube and then do a quick spin (less than 5000xg) to concentrate the liquid at the bottom.
5. Store the suspended plasmid at -20°C. The DNA is stable for at least one year from date of shipping when stored at -20°C.

Note: Plasmids are not sterile. For experiments where strict sterility is required, filtration with 0.22um filter is required.

RefSeq: [NM_001110017.2](#)

RefSeq Size: 5771 bp

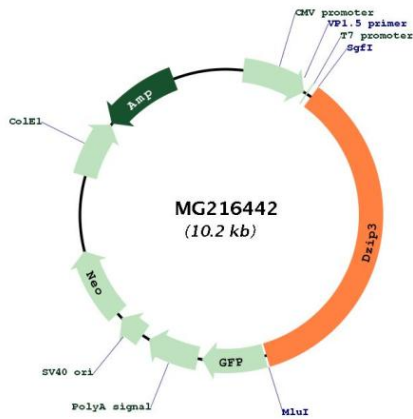
RefSeq ORF: 3615 bp

Locus ID: 224170

Cytogenetics: 16 B5

Gene Summary: E3 Ubiquitin ligase proteins mediate ubiquitination and subsequent proteasomal degradation of target proteins. E3 ubiquitin ligases accept ubiquitin from an E2 ubiquitin-conjugating enzyme in the form of a thioester and then directly transfers the ubiquitin to targeted substrates. Able to specifically bind RNA.[UniProtKB/Swiss-Prot Function]

Product images:



Circular map for MG216442