

## Product datasheet for **MG216437**

### **Slc27a3 (NM\_011988) Mouse Tagged ORF Clone**

#### **Product data:**

Product Type:	Expression Plasmids
Product Name:	Slc27a3 (NM_011988) Mouse Tagged ORF Clone
Tag:	TurboGFP
Symbol:	Slc27a3
Synonyms:	Acsvl3; FATP-3; FATP3; Vlcs-3
Mammalian Cell Selection:	Neomycin
Vector:	pCMV6-AC-GFP (PS100010)
E. coli Selection:	Ampicillin (100 ug/mL)



[View online »](#)

ORF Nucleotide  
Sequence:

>MG216437 representing NM\_011988  
Red=Cloning site Blue=ORF Green=Tags(s)

TTTTGTAATACGACTCACTATAGGGCGGCCGGGAATTCGTCGACTGGATCCGGTACCGAGGAGATCTGCC  
GCC**CGGATCGCC**

ATGGCGGCCCTCCTGCTGCTGCTGCCCTTACTCTTGTCTCTGCCCTGCTGCTGAAGCTAGACGCTGCGC  
CTCAGCTGCGCTGGCTGCCGGCCGACCTGGCCTTACAGTTTCGCGCCCTCCGCTGCAAAAGGGCCCTTCG  
AGCACGCGCGCTGGCCGAGCGGCCGCCGACCCCGAAAGCTCTGAGAGCGGGTGCAGTCTGGCCTGGCGT  
CTCGCGTACCTGGCCCGGAGCAGCCGACACACCTTCTCATCCAGCGCGCAGCGCTTTAGCTACG  
CGGAGGCTGAGCGCAGAGCAACCGGATTGCTCGCGCTTTCTGCGCGCACGGGGCTGGACCGGGGGCCG  
CCGAGGCTCGGGCAGGGGACGACTGAGGAAGGCGCACGCGTGGCGCTCCGGCTGGAGATGCGGCTGCT  
GGAGGGACGACCGCGCCCTCTGGCACCCGGGGCAGCCTGGCGCTGCTCCTCCAGCGGGCCCGGATT  
TCCTTTGGATTTGGTTTCGACTGGCCAAAGCTGGCCTGCGCACGGCCTTTGTGCCACCGCTTTACGCCG  
AGGACCCCTGCTGCACTGCTCCGAGCTGCGGTGCGAGTGCCTCGTGTGGCCACAGAGTTTCTGGAG  
TCCTTGAGCGCGACCTGCCGGCCTTGAGAGCCATGGGGCTCCACCTATGGGCGACGGGCCCTGAAACTA  
ATGTAGCTGGAATCAGCAATTTGCTATCGGAAGCAGCAGACCAAGTGGATGAGCCAGTGCCGGGGTACCT  
CTCTGCCCCCAGAACATAATGGACACCTGCCTGTACATCTTACCTCTGGCACTACTGGCTGCCCAAG  
GCTGCTCGAATCAGTCATCTGAAGTTCTACAGTGCCAGGGATTCTACCATCTGTGTGGAGTCCACCAGG  
AGGACGTGATCTACCTCGCACTCCCACTGTACCACATGTCTGGCTCCCTTCTGGGCATTGTGGGCTGCTT  
GGGCATTGGGGCCACCGTGGTGTGAAACCAAGTTCTCAGCTAGCCAGTTCTGGGACGATTGCCAGAAA  
CACAGGGTGACAGTGTTCAGTACATTGGGGAGTTGTGCCGATACCTCGTCAACCAGCCCCGAGCAAGG  
CAGAGTGTGACCATAAGGTGCGCTTGGCAGTGGGCAGTGGTTGCGCCAGACACCTGGGAGCGTTTCTCT  
GCGGCGATTTGGACCTCTGCAGATACTGGAGACGTATGGCATGACAGAGGGCAACGTAGCTACGTTCAAT  
TACACAGGACGGCAGGGTGCAGTGGGGCAGCTTCTGGCTTTACAAGCACATCTTCCCCTTCTCCTTGA  
TTCGATACGATGTATGACAGGGGAGCCTATTCGGAATGCCAGGGGCACTGCATGACCACATCTCCAGG  
TGAGCCAGGCCTACTGGTGGCCCCAGTGAGCCAGCAGTCCCCCTTCTGGGCTATGCTGGGGCTCCGGAG  
CTGGCCAAGGACAAGCTGCTGAAGGATGTCTTCTGGTCTGGGGACGTTTTCTTCAATACTGGGGACCTCT  
TGGTCTGTGATGAGCAAGGCTTTCTTCACTTCCACGATCGTACTGGAGACACCTCAGGTGGAAGGGAGA  
GAATGTGGCCACAACGAAGTGGCTGAGGTCTTGGAGACCCTGGACTTCTTCCAGGAGGTGAACATCTAT  
GGAGTACGGTGCAGGGCAGCAAGGCAGGGCAGGCATGGCGGCCTTGGCTCTGCGGCCCCCGCAGGCTC  
TGAACTGGTGCAGCTCTACAGCCATGTTTCTGAGAACTTGCCACCGTATGCCCGACCTCGGTTTCTCAG  
GCTCCAGGAATCTTTGGCCACTACTGAGACCTTCAAACAGCAGAAGGTTAGGATGGCCAATGAGGGCTTT  
GACCCAGTGTACTGTCTGACCCACTCTATGTTCTGGACCAAGATATAGGGGCTACCTGCCCTCACAC  
CTGCCCGGTACAGTGCCCTCCTGTCTGGAGACCTTCAATC

AG**CGGACCG**ACGCGTACGCGGCCGCTCGAG - GFP Tag - GTTTAA

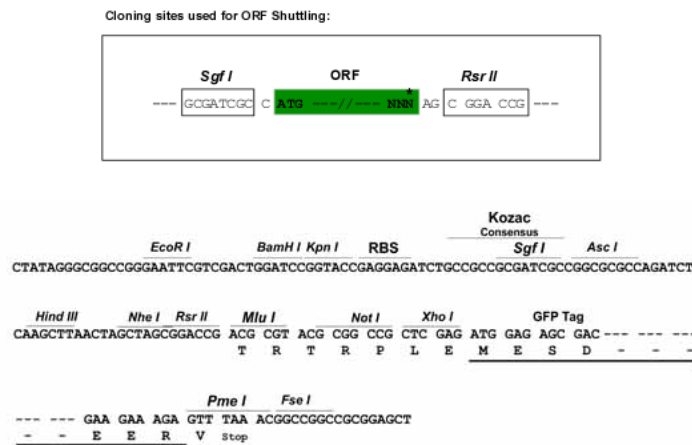
Protein Sequence: >MG216437 representing NM\_011988  
 Red=Cloning site Green=Tags(s)

MAALLLLPLLLLLPLLLKLDVWPQLRWLPADLAFTVRALRCKRALRARALAAAAADPESSGCSLAWR  
 LAYLAREQPTHFLIHGAQRFSYAEARESNIARAFLRARGWTGRRGSGRGSTEEGARVAPPAGDAAA  
 GGTTAPPLAPGATVALLLPAGPDFLWIWFLAKAGLRATFVPTALRRGPLLHCLRSCGASALVLATEFLE  
 SLEPDLPALRAMGLHLWATGPETNVAGISNLLSEAADQVDEPVPGYL SAPQNIMDTCLYIFTSGTTGLPK  
 AARISHLKVLCQGFYHLCGVHQEDVIYLALPLYHMSGSLLGIVGCLGIGATVVLKPKFSASQFWDDCQK  
 HRVTVFYIGELCRYLVNQPPSKAECDHKVR LAVGSLRPDTWERFLRRFGPLQILETYGMTEGNVATFN  
 YTGRQGA VGRASWLYKHIFPFS LIRYDVMTGEP IRNAQGHCM TTS PGEPGLLVAPVSQQSPFLGYAGAPE  
 LAKDKLLKDVFWSGDVFNTGDLLVCDEQGF LHFHDRTGDTFRWKGENVATTEVAEVLETLDLFLQEVNIY  
 GVTVPGHEGRAGMAALALRPPQALNLVQLYSHVSENLPYARPRFLRLQESLATTETFKQKQVRMANEGF  
 DPSVLSDPLYVLDQDIGAYLPLTPARYSALLSGDLRI

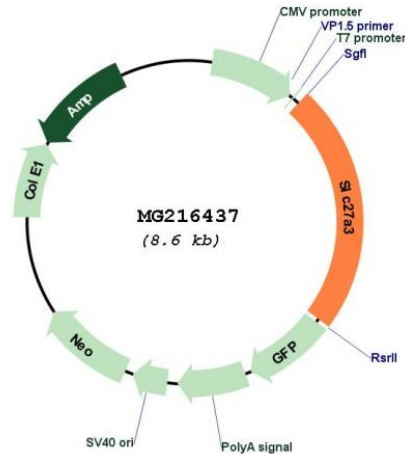
SGP TRRRLE - GFP Tag - V

Restriction Sites: SgfI-RsrII

Cloning Scheme:



## Plasmid Map:



ACCN: NM\_011988

ORF Size: 2001 bp

OTI Disclaimer: The molecular sequence of this clone aligns with the gene accession number as a point of reference only. However, individual transcript sequences of the same gene can differ through naturally occurring variations (e.g. polymorphisms), each with its own valid existence. This clone is substantially in agreement with the reference, but a complete review of all prevailing variants is recommended prior to use. [More info](#)

OTI Annotation: This clone was engineered to express the complete ORF with an expression tag. Expression varies depending on the nature of the gene.

Components: The ORF clone is ion-exchange column purified and shipped in a 2D barcoded Matrix tube containing 10ug of transfection-ready, dried plasmid DNA (reconstitute with 100 ul of water).

Reconstitution Method:

1. Centrifuge at 5,000xg for 5min.
2. Carefully open the tube and add 100ul of sterile water to dissolve the DNA.
3. Close the tube and incubate for 10 minutes at room temperature.
4. Briefly vortex the tube and then do a quick spin (less than 5000xg) to concentrate the liquid at the bottom.
5. Store the suspended plasmid at -20°C. The DNA is stable for at least one year from date of shipping when stored at -20°C.

RefSeq: [NM\\_011988.2](#), [NP\\_036118.2](#)

RefSeq Size: 2284 bp

RefSeq ORF: 2004 bp

Locus ID: 26568

UniProt ID: [O88561](#)

Cytogenetics: 3 F1

Gene Summary: Has acyl-CoA ligase activity for long-chain and very-long-chain fatty acids. Does not exhibit fatty acid transport activity.[UniProtKB/Swiss-Prot Function]