

Product datasheet for **MG216423**

Chpf (NM_001001566) Mouse Tagged ORF Clone

Product data:

Product Type:	Expression Plasmids
Product Name:	Chpf (NM_001001566) Mouse Tagged ORF Clone
Tag:	TurboGFP
Symbol:	Chpf
Synonyms:	1700028N03Rik; AI414328; D1Bwg1363e
Mammalian Cell Selection:	Neomycin
Vector:	pCMV6-AC-GFP (PS100010)
E. coli Selection:	Ampicillin (100 ug/mL)



[View online »](#)

ORF Nucleotide
Sequence:

>MG216423 representing NM_001001566
 Red=Cloning site Blue=ORF Green=Tags(s)

TTTTGTAATACGACTCACTATAGGGCGGCCGGGAATTCGTCGACTGGATCCGGTACCGAGGAGATCTGCC
 GCCGCGATCGCC

ATGCGGGCGTCGCTGCTGTCCGTGCTGCGGCCGCGGGGCCGTGGCCGTGGGCATCTCTCTGGGCT
 TCACCCTGAGCCTGCTCAGCGTCACCTGGGTGGAGGAGCCTTGCGGACCCGGGCCCCCAACCCGAGAG
 CTCTGAGCTGCCCGCGCGCAACACCAACGCGGCGCGCCGCCCAACTCGGTGACGCCGGATCCGAG
 CGCGAGAGGCCCGGGGCCGCGCAGGCACCGGTGAGAGCTGGGAGCCTCGTGTCTTGCCCTACCATCCCG
 CGCAGCCAGGCCAGGCCACCAAGAAGGCCGTGAGAACTCGGTATATCAGCACGGAGCTGGGCATCAGGCA
 GAAGCTTCTGGTGGCAGTGTGACCTCACAAAGCCACGTTGCCACACTGGGTGTGGCTGTAAACCGAACT
 CTGGGACACCGACTGGAGCATGTAGTGTCTGACCGGTGCGAGGGGCCCGGCACCTTCAGGCATGG
 CGGTGGTGGCACTGGGCGAAGAGAGGCCATCGGACACCTGCACCTGGCGCTGCGCCACCTGCTGGAGCA
 ACACGGCGATGACTTTGACTGGTTTTCTAGTGCCTGATGCCACCTATACTGAAGCGCATGGACTGGAC
 CGCCTAGCTGGCCACCTCAGCCTTGCTTACGAAACCCATCTATCTTGCCCGGCCGAGGACTTCACTCG
 GTGGAGATACTACCCAGGCCGCTACTGCCACGGGGGCTTTGGAGTCTTGCTCTCTCGCACACTGTACA
 GCAACTGCGCCCCACCTGGAAAGCTGCCGCAACGACATCGTCAGTGCTCGCCGGATGAGTGGTTGGGC
 CGCTGCATCCTTGATGCCACAGGCGTGGGCTGTACTGGTGACCACGAGGGAATGCACTACAACTACCTGG
 AACTGAGCCCCGGGGAGCCTGTGCGAGGAGGGGACCCCTCGTTCCGCGAGCGCCTTGACAGCCATCCCGT
 GCGTGACCCTGTGCATGTACAGCTGCACAAAGCTTTGCCCCGCTGAGCTGGACCGCACGTACCAG
 GAGATCAAGAATTGCAGTGGGAGATCCAGAATACCAGCCGACTGGCTGCTGATGGGAGAGAGCCTCTG
 CCTGGCCAGTGGGCATCCAGCACCGTCTCGCCCTGCCTCAGCCTTTGAGGTTCTGCGCTGGGACTACT
 CACAGAAACAATACGCGTTCTCTGCGCCGATGGCTCTCCCGCTGCCCGTTGCGTGGGGCCGACCAGGCT
 GATGTGGCTGACGTCTGGGACAGCCTTAGAGGAGCTCAACCGCGTTACCAGCCAGCGCTGCAGCTCC
 AGAAGCAACAGCTGGTGAACGGCTACCGCGTTTTGATCCAGCCCAGGCATGGAGTACACACTAGACCT
 GCAGCTGGAAGCGCTGACACCCAGGGTGGCCGCTGGCCCTCACCCGAGGGTGCAGCTCCTTCGGCCC
 TTGAGCCGAGTGGAGATCTTGCCGTACCCATGTACCCAGGCTTCTCGGCTCACTGTGCTACTGCCGC
 TGGCTGCAGCGGAACGAGACCTGGCTTCTGGCTTCTTAGAAGCCTTTGCCACTGCAGCCCTGGAACCTGG
 TGATGCAGCAGCCTTGACCCTGCTGCTGTATGAGCCACGCCAGGCCAGCGGGCAGCCCACTCAGAC
 GTCTTCGCACCTGTCAAGGCCACGTGGCAGAGCTAGAGCGGCGTTCCCTGGTGGCCGGTGCCCTGGC
 TCAGTGTGAGACAGCAGCGCCCTCCTCACTGCGTCTCATGGATCTGCTGTCCAAGAAGCACCCACTAGA
 CACTCTGTTCTGCTGGCCGGCCAGACACGGTACTCACACCTGATTTCCCTGAACCGCTGCCGCATGCAT
 GCCATCTCTGGCTGGCAGGCCTTCTCCCATGCACCTCCAGGCCTTCCACCCTGCTGTGGCTCCACCTC
 AGGGCCCTGGGCCACCAGAGCTGGGCCGTGACACCGGTCACTTTGATCGCCAGGCTGCCAGTGAGGCATG
 CTTCTACAACCTCCGACTATGTGGCGGCCGTGGCCGGCTGGTGGCGGCCCTCGGAGCAGGAGGAGGAGCTG
 CTGGAGAGCCTGGATGTGTACGAGTTGTTCTGCGCTTCTCCAATTGCACGTGCTGAGAGCAGTAGAGC
 CAGCCTTGCTGCAGCGCTACCGGGCCAGCCGTGACGTGCACGGCTCAGTGAAGACCTTTACCACCGCTG
 TCGCCAGAGCGTACTTGAGGGCCTTGGTCCCGCACCCAGCTTGCCATGCTGCTCTTTGAGCAGGAACAG
 GGAACAGCACC

AGCGGACCGACGCGTACGCGGCCGCTCGAG - GFP Tag - GTTTAA

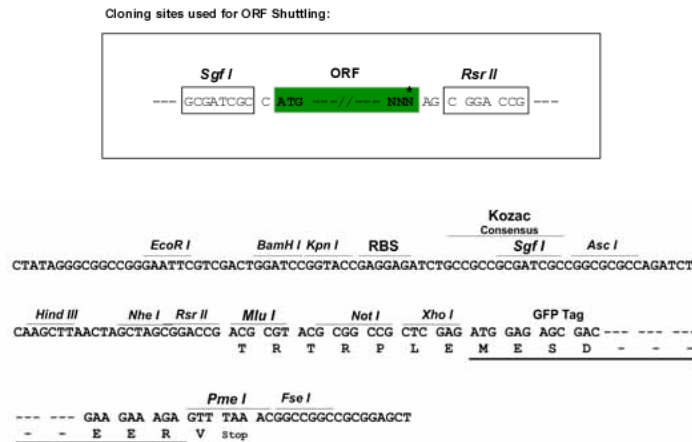
Protein Sequence: >MG216423 representing NM_001001566
 Red=Cloning site Green=Tags(s)

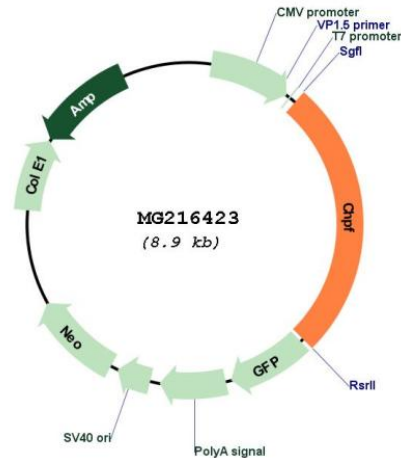
MRASLLLSVLRPAGPVAVGIVSLGFTLSLLSVTWVEEPCGPGPPQPGDSELPARGNTNAARRPNSVQPGSE
 RERPGAGAGTGESWEPRVLPYHPAQPGQATKKAVRTRYISTELGIRQKLLVAVLTSQATLPTLGVAVNRT
 LGHRLEHVFLTGARGRTPSGMAVVALGEERPIGHLHLALRHLLLEQHGDDFDWFFLVPDATYTEAHGLD
 RLAGHLASATHLYLGRPQDFIGGDTTPGRYCHGGFVLLSRTLLQQLRPHLESCRNDIVSARPDEWLG
 RCILDATGVGCTGDHEGMHYNLELSPGEPVQEGDPRFRSALTAHPVVRDPVHMYQLHKAFARAELDRYQ
 EIQLQWEIQNTSRLAADGERASAWPVGIPAPSRPASRFEVLRWDYFTEQYAFSCADGSPRCPLRGADQA
 DVADVLGTALEELNRRYQPALQLKQQLVNGYRRFDPARGMEYTLDLQLEALTPQGGRWPLTRRVQLLRP
 LSRVEILPVVYVEASRLTVLLPLAAAERDLASGFLEAFATAALEPGDAAALTLTLLYEPRAQRAAHS
 VFAPVKAHVAELERRFPGARVPWLSVQTAAPSPRLMDLLSKKHPLDTLFLLAGPDTVLPDFLNRCRMH
 AISGWQAFPMHFQAFHPAVAPPQGPPELGRDTGHFDRQAASEACFYNSDYVAARGRLVAASEQEEL
 LESLDVYELFLRFSNLHVLRAVEPALLQRYRAQPC SARL SEDL YHRCRQSVLEGLSRTQLAMLLFEQEQ
 GNST

SGP^{TRRRLE} - GFP Tag - V

Restriction Sites: SgfI-RsrII

Cloning Scheme:



Plasmid Map:


ACCN: NM_001001566

ORF Size: 2322 bp

OTI Disclaimer: The molecular sequence of this clone aligns with the gene accession number as a point of reference only. However, individual transcript sequences of the same gene can differ through naturally occurring variations (e.g. polymorphisms), each with its own valid existence. This clone is substantially in agreement with the reference, but a complete review of all prevailing variants is recommended prior to use. [More info](#)

OTI Annotation: This clone was engineered to express the complete ORF with an expression tag. Expression varies depending on the nature of the gene.

Components: The ORF clone is ion-exchange column purified and shipped in a 2D barcoded Matrix tube containing 10ug of transfection-ready, dried plasmid DNA (reconstitute with 100 ul of water).

Reconstitution Method:

1. Centrifuge at 5,000xg for 5min.
2. Carefully open the tube and add 100ul of sterile water to dissolve the DNA.
3. Close the tube and incubate for 10 minutes at room temperature.
4. Briefly vortex the tube and then do a quick spin (less than 5000xg) to concentrate the liquid at the bottom.
5. Store the suspended plasmid at -20°C. The DNA is stable for at least one year from date of shipping when stored at -20°C.

RefSeq: [NM_001001566.3](#), [NP_001001566.1](#)

RefSeq Size: 3107 bp

RefSeq ORF: 2325 bp

Locus ID: 74241

UniProt ID: [Q6IQX7](#)

Cytogenetics: 1 39.14 cM

Gene Summary:

Has both beta-1,3-glucuronic acid and beta-1,4-N-acetylgalactosamine transferase activity. Transfers glucuronic acid (GlcUA) from UDP-GlcUA and N-acetylgalactosamine (GalNAc) from UDP-GalNAc to the non-reducing end of the elongating chondroitin polymer (By similarity). Isoform 2 may facilitate PRKN transport into the mitochondria. In collaboration with PRKN, isoform 2 may enhance cell viability and protect cells from oxidative stress (By similarity). [UniProtKB/Swiss-Prot Function]