

Product datasheet for **MG216420**

Rab11fip4 (NM_175543) Mouse Tagged ORF Clone

Product data:

Product Type:	Expression Plasmids
Product Name:	Rab11fip4 (NM_175543) Mouse Tagged ORF Clone
Tag:	TurboGFP
Symbol:	Rab11fip4
Synonyms:	A730072L08Rik; mKIAA1821; RAB11-FIP4
Mammalian Cell Selection:	Neomycin
Vector:	pCMV6-AC-GFP (PS100010)
E. coli Selection:	Ampicillin (100 ug/mL)



[View online »](#)

ORF Nucleotide Sequence:

>MG216420 representing NM_175543
 Red=Cloning site Blue=ORF Green=Tags(s)

TTTTGTAATACGACTCACTATAGGGCGGCCGGGAATTCGTCGACTGGATCCGGTACCGAGGAGATCTGCC
 GCC**CGGATCGCC**

ATGGCGGGTGGCGGGCTGGCGGGCGCCCCGCGGCTCTGCTGCGCTCCGTGCGCCCTGCGCGAAG
 TGTTTCAGGTGTGCGGCCGCGACCCGACGGCTTTCTACGCGTGGAGCGGTGCGGGCGCTCGGCCCTGCG
 CTTTCGGGCAAGGAGAGGAGTGGAAAACTTGTGAAGTGTGGATCCCAATGACCTGGGAGAATCAAC
 TTCAAGGATTTTTGCCGCGGAGTATTCGCCATGAAAGGTGTGAGGAGCTGCTGAAGGACGTGCTGTCGG
 TGGAGAGCGCAGGGACCTGCCATGTTCTCCAGACATCCAGACTGTGTGGAGCAGGGCAGCGACTTCTC
 TGGCTCTACTGATGGCGAGCAACTCCCCAGGAAACCCGACTTCTCCAGGAAGACGAAGAGGAAGCGATG
 ACATTGGCCCTACCTGAGGGACCCAGGAGTTAGACATGGACAGTCCCATGGAGAGCAGCCAAGGCCCGG
 AGGGCTCTGTCAAGGGTGTGGCGAGGAGAAGGAGCCTGAGCTGGGGGGCCTGTTCTGCCAGAGGACAA
 GTGCCCTCGTCTCACTCCATCTGTGACCACATCAGACCTTCCACTCACTCCACCGCCTCTTTATCAGC
 AACGAGGAGCAATTTGAAGACTATGGCGAGGGGATGACGTGGACTGTGCTCCCAGCAGCCCATGCCCCG
 ACGATGAGACCAGAACCAATGTCTACTCAGATCTGGGATCTTCAGTGTCTCCAGTGCGGACAGACCCC
 AAGGAAGATGCGACATGCCTACAACAGCGAGCTGCTGGACGTGTACTGCTCAGTGTGCAAGAAGATC
 AACCTGCTGAATGACCTGGAGGCCCGGCTGAAGAACCTGAAGGCCAACAGCCCCAACCGGAAGATCTCAA
 GCACAGCCTTTGGACGGCAGTCAATGCACAACAGTAATTCAGCAGCAGTAATGGCAGCACCGAGGACCT
 GTTCCGTGACAGCATCGACTCCTGTGACAATGACATCACAGAGAAGGTGAGCTTCTGGAAAAAAGGTA
 ACAGAAGTGGAGAACGACAGCCTGACGAGCGGGGGCCTGAAGAGCAAGCTGAAGCAAGAGAACATGCAGC
 TGGTGCACAGGGTGCACAGCTGGAGGAGATGGTGAAGGATCAGGAGACCACAGCGGAGCAGCGCTGGA
 GGAGGAGGCCCGCGACACCGTGAAGTCTACTGCAAGCTGGAGCGGGAAAAGAGCACAGAGCTGGAGCTG
 CTAACACCAGGGTGCAGCAGTTGGAGGAAGAGAACACAGATCTGAGAACGACAGTGGCTCGACTCAAGT
 CACAGACCAGAAAGTGGACGAGGAGCGCAGCGCATGTCTGACCGGCTGGAGGACACCAGCCTGCGACT
 GAAGGACGAGATGGACCTTTACAAGCGCATGATGGACAAGCTGCGGCAGAACCGCCTGGAGTTCAGAAG
 GAGCGGGAGGCGCAGGAGCTCATCGAGGACTTGGGAGAGAGCTGGAGCACCTGCAGATGTACAAGC
 TGGACTGCGAGCGCCAGGTAGGGGCCGAGCTCCTCTGGCCTTGGCGAGTTCAACGCCAGAGCCCGGGA
 GGTGGAACCTGAACATGAGGTCAAGCGTCTGAAGCAGGAGAATCACAAGCTGCGGGATCAGAATGATGAT
 TTAATGGGCAGATCCTGAGCCTCAGCCTACGAGGCGAAGAACCTCTTTGCAACCCAGACCAAGCCCC
 AGTCTCTGGCTGCAGAAATCGACACAGCATCTCGAGATGAGCTAATGGAGGCCCTGAAGGAGCAGGAGGA
 GATCAACTTCCGACTGAGACAGTACATGGACAAGATTATCCTGGCTATACTGGACCACAACCCCTCCATC
 TTGGAGATTAACAC

AG**CGGACCG**ACGCGTACGCGGCCGCTCGAG – GFP Tag – GTTTAA

Protein Sequence:

>MG216420 representing NM_175543
 Red=Cloning site Green=Tags(s)

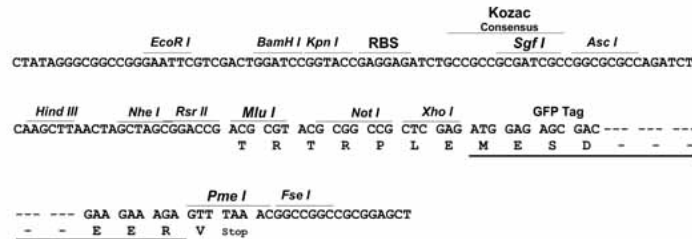
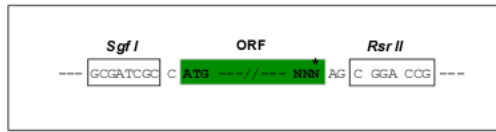
MAGGAGWAGAPAALLRSVRRLREVFEVCGRDPDGFLLRVERVAALGLRFQGGEEVEKLVKCLDPNDLGRIN
 FKDFCRGVFAMKGCEELLKDVLSVESAGTLPCSPDIPDCVEQGSDFSGSTDGEQLPREPDFQDEEEEM
 TLALPEGPQELDMSPMESSQPEGSVKCGEEKEPELGLFLPEDKCLVLTPSVTSDLSTHSTASLIS
 NEEQFEDYEGDDVDCAPSSPCPDETRTNVYSDLGSSVSSSAGQTPRKMRHAYNSELLDVYCSQCCKKI
 NLLNDLEARLKNLKANSNPKISSAFGRQLMHNSNFSSNGSTEDLFRDSIDSCDNDITEKVSFLEKKV
 TELENDLSLTSGLKSKLKQENMQLVHRVHELEEMVKDQETTAEQALEEEEARRHREYCKLEREKSTELLE
 LNTRVQQLLEEENTDLRTTVARLKSQTEKLEERQRMSDRLEDLSLRLKDEMDLYKRMMDKLRQNRLEFQK
 ERATQELIEDLRRELEHLQMYKLDCEPRGRSSSGLGEFNARAREVELEHEVKRLKQENHKLQNDND
 LNGQILSLSLYEAKNLFATQKAQSLAAEIDTASRDELMALKEQEEINFRLRQYMDKIIILAILDHNP
 LEIKH

SGP**TRRRLE** – GFP Tag – V

Restriction Sites: SgfI-RsrII

Cloning Scheme:

Cloning sites used for ORF Shuttling:



ACCN: NM_175543

ORF Size: 1905 bp

OTI Disclaimer: The molecular sequence of this clone aligns with the gene accession number as a point of reference only. However, individual transcript sequences of the same gene can differ through naturally occurring variations (e.g. polymorphisms), each with its own valid existence. This clone is substantially in agreement with the reference, but a complete review of all prevailing variants is recommended prior to use. [More info](#)

OTI Annotation: This clone was engineered to express the complete ORF with an expression tag. Expression varies depending on the nature of the gene.

Components: The ORF clone is ion-exchange column purified and shipped in a 2D barcoded Matrix tube containing 10ug of transfection-ready, dried plasmid DNA (reconstitute with 100 ul of water).

Reconstitution Method:

1. Centrifuge at 5,000xg for 5min.
2. Carefully open the tube and add 100ul of sterile water to dissolve the DNA.
3. Close the tube and incubate for 10 minutes at room temperature.
4. Briefly vortex the tube and then do a quick spin (less than 5000xg) to concentrate the liquid at the bottom.
5. Store the suspended plasmid at -20°C. The DNA is stable for at least one year from date of shipping when stored at -20°C.

RefSeq: [NM_175543.3](#), [NP_780752.1](#)

RefSeq Size: 3145 bp

RefSeq ORF: 1908 bp

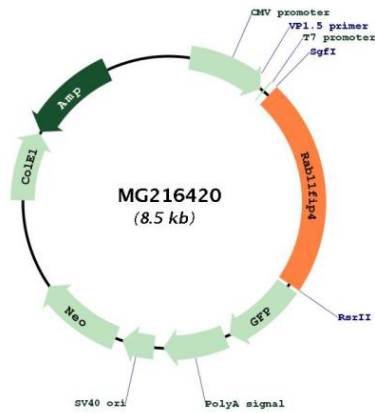
Locus ID: 268451

UniProt ID: [Q8BQP8](#)

Cytogenetics: 11 46.88 cM

Gene Summary: Acts as a regulator of endocytic traffic by participating in membrane delivery. Required for the abscission step in cytokinesis, possibly by acting as an 'address tag' delivering recycling endosome membranes to the cleavage furrow during late cytokinesis (By similarity). May play a role in differentiation during retinal development, in a Rab11-independent manner. [UniProtKB/Swiss-Prot Function]

Product images:



Circular map for MG216420