

## Product datasheet for **MG216417**

### **Dmrta2 (NM\_172296) Mouse Tagged ORF Clone**

#### **Product data:**

Product Type:	Expression Plasmids
Product Name:	Dmrta2 (NM_172296) Mouse Tagged ORF Clone
Tag:	TurboGFP
Symbol:	Dmrta2
Synonyms:	Dmrt5
Mammalian Cell Selection:	Neomycin
Vector:	pCMV6-AC-GFP (PS100010)
E. coli Selection:	Ampicillin (100 ug/mL)



[View online »](#)

**ORF Nucleotide Sequence:**

>MG216417 representing NM\_172296  
 Red=Cloning site Blue=ORF Green=Tags(s)

TTTTGTAATACGACTCACTATAGGGCGGCCGGAATTCGTCGACTGGATCCGGTACCGAGGAGATCTGCC  
 GCC**CGCATCGCC**

ATGGAGCTGCGCTCGGAGCTGCCAGCGTGCCCGGTGCGGCGACAGCAGCAGCGACAGCGGACCAC  
 CCGTGGCATCGGTGGCGTGGTGGCTGCGGCGGACAGTCCCGCAGCATCGCTACCACTGAGCGTGGCCGG  
 AGGCTTGCTGCGGGCGCCGCGTGTGTTGAGGGCAGCGGAGAAGTACCCGCGGACCCCAAGTGCAGC  
 CGCTGCCGCAACCACGGAGTGGTGTCCGCGCTCAAGGGCCACAAGCGCTACTGCCGCTGGAAGGACTGCC  
 TGTGCGCAAGTGTACGCTCATCGCCGAGCGCCAGCGCTCATGGCGGCTCAGGTGGCTTGCAGGCA  
 GCAGGCGCAGGAGGAGAACGAGGCGCGGAGTTGCAATTGCTGTACGGCACTGCCAGGGGCTGGCGCTG  
 GCCCGCCCAACGGCATCATCCCCCGCGGCTGCCTACGAAGTCTTTGGCTCGGTTTGCGCCACCGACG  
 GCGGGGCTCCTGGAGCTGGAGCGCCCGGGGAGTGCAGGGGGCGCAGGGGGCGCAGAGGCCAAATTGCA  
 GAAGTTTGATCTGTTTCCCAAGACGCTGCTTCAGGCCGGCCGCCGACAGTCCGCAGCCGCCCGCAGGG  
 AAGCCCTTGTGCGCCGACGGCGCGGACTCAGGTCCCGGACCTCGTCCCGGAGGTGCGGCCCGGCTCAG  
 GCTCGGAGAACGGAGACGGCGAGTCCTTTTCCGGTGCCTCTGGCCCGGCTCCAAGGAGCGGGTGG  
 CAGCTGTCTGGGAGCGCGGGCGCGGCGGTGGCGGCGAGGAGGACAGCCCGGCTCCTCCAGCCCTG  
 GGTTCCGAATCGGTTTCGGAGGCTGACAAAGAAGAAGCCGAGGCCGACCGACTCCGGGGCTGGCGGGC  
 GGCCGGGGCGCGGCGAGCGGACCGCGTGGACATCTTGACGCGGCTTCCCGGGCCACCGGAGAGGCGT  
 CCTGGAGCTGGTGTGACGGCTGTGGCGGCGAGTGGTGCAGGCCATCGAGCAGGTGCTCAACCACCAC  
 CGCGGAGGCTGGCGGCTGGCTGGGCCCGCGCAGCCGCTGGAGAAGGCCGCGGTGAGCGCGGGGTTG  
 AGGACCGTGGCCCGGGCGGTGGAGGCCGACCGCGGGGGAGCCGGTTGCCGCTCCGCTGCAGAC  
 CGGGCCACCGCCCGCCCGCACACAGACCTTGTGCTGGCCGGGGCCATGACGCCCGCGGCTGGGCTCG  
 CTGAGCAGCGCTCCGCTTCTCGCCACTGCAGCCCAATGCCAGCCACTTCGGCGCGGACGCGGGCGCT  
 ACCCTCTGGTGCGCGCTCGGCTGAGCCCTGCGCCTGGCCTACTCGGCGGCGGCGCCACAGCCG  
 CGGCTGGCTTTCATGGCGCCCTACTCCAGCGCGGCTGGTGGCCACACTCGGTTTTCGGCCGCCATG  
 GACTACGCTTACGCGACTCATGCGGACCGCTCGGCCGCTGCCCGGCTCGGTCACAAAGGAGCCCG  
 GCTACGGGGCGGCTGTACGGGCCATGGTCAACGGCACCCCTGAGAAGCAG

AG**CGGACCG**ACGCGTACGCGGCCGCTCGAG - GFP Tag - GTTTAA

**Protein Sequence:**

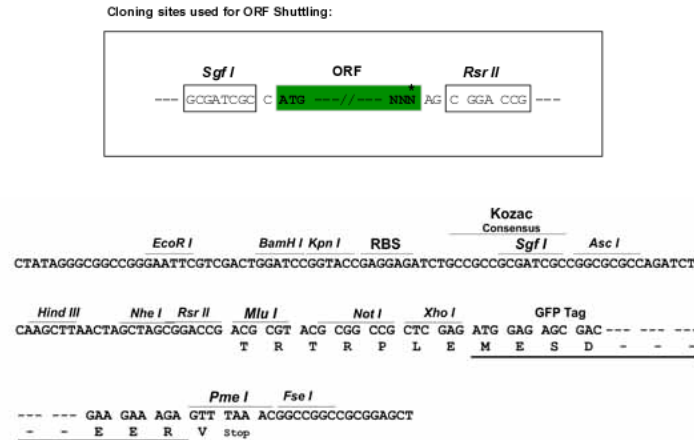
>MG216417 representing NM\_172296  
 Red=Cloning site Green=Tags(s)

MELRSELPSVPGAATAAATATGPPVASVASVAAAAAASLPVSVAGLLRAPLLLRAAEKYPRTPKCA  
 RCRNHGVVSALKGHKRYCRWKDCLCAKCTLIAERQVMAAQVALRRQQAQEENEARELQLLYGTAEGLAL  
 AAANGIIPRPAYEVFGSVCATDGGPGAGAPAGSAGGAGAEAKLQKFDLFPKTLQAGRPDSQPQPPG  
 KPLSPDGADSGPRTSSPEVRPGSGSENGDGEFSGSPLARASKEAGGSCPGSAGAGGGGEEDSPGSSPL  
 GSESGSEADKEEAEAAPTPLGGGPGPRQRTPLDILTRVFPGHRRGVLELVLQCGGDVVQAIQVNLHH  
 RGLAAGLGPAAPLEKAAVSAAVEDAWPGRVEAAAAGGAGLPAPLQTGPTAPPHRPLLAGAMTPGALGS  
 LSSRSFSPNQPNASHFGADAGAYPLGAPLGLSPLRLAYSAAAHSRGLAFMAPYSTAGLVPTLGFPPM  
 DYAFSDLMRDRSAAAAAAVHKEPGYGGGLYGPVNGTPEKQ

SGP**TRRRLE** - GFP Tag - V

**Restriction Sites:**

Sgfl-RsrII

**Cloning Scheme:**


**ACCN:** NM\_172296

**ORF Size:** 1593 bp

**OTI Disclaimer:** The molecular sequence of this clone aligns with the gene accession number as a point of reference only. However, individual transcript sequences of the same gene can differ through naturally occurring variations (e.g. polymorphisms), each with its own valid existence. This clone is substantially in agreement with the reference, but a complete review of all prevailing variants is recommended prior to use. [More info](#)

**OTI Annotation:** This clone was engineered to express the complete ORF with an expression tag. Expression varies depending on the nature of the gene.

**Components:** The ORF clone is ion-exchange column purified and shipped in a 2D barcoded Matrix tube containing 10ug of transfection-ready, dried plasmid DNA (reconstitute with 100 ul of water).

**Reconstitution Method:**

1. Centrifuge at 5,000xg for 5min.
2. Carefully open the tube and add 100ul of sterile water to dissolve the DNA.
3. Close the tube and incubate for 10 minutes at room temperature.
4. Briefly vortex the tube and then do a quick spin (less than 5000xg) to concentrate the liquid at the bottom.
5. Store the suspended plasmid at -20°C. The DNA is stable for at least one year from date of shipping when stored at -20°C.

**RefSeq:** [NM\\_172296.2](#), [NP\\_758500.2](#)

**RefSeq Size:** 2947 bp

**RefSeq ORF:** 1596 bp

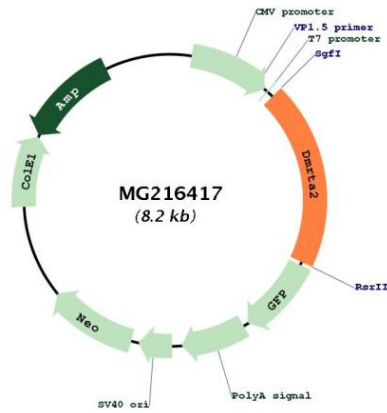
**Locus ID:** 242620

**UniProt ID:** [A2A9A2](#)

**Cytogenetics:** 4 C7

Gene Summary: May be involved in sexual development.[UniProtKB/Swiss-Prot Function]

Product images:



Circular map for MG216417