

Product datasheet for **MG216404**

Cit (NM_007708) Mouse Tagged ORF Clone

Product data:

Product Type:	Expression Plasmids
Product Name:	Cit (NM_007708) Mouse Tagged ORF Clone
Tag:	TurboGFP
Symbol:	Cit
Synonyms:	C030025P15Rik; Cit-k; CRIK; CRIK-SK
Mammalian Cell Selection:	Neomycin
Vector:	pCMV6-AC-GFP (PS100010)
E. coli Selection:	Ampicillin (100 ug/mL)
ORF Nucleotide Sequence:	>MG216404 representing NM_007708 Red=Cloning site Blue=ORF Green=Tags(s)

TTTTGTAATACGACTCACTATAGGGCGGCCGGAATTCGTCGACTGGATCCGGTACCGAGGAGATCTGCC
GCC**CGATCGCC**

ATGTTGAAGTTC AAGTATGGTGTGCGGAACCCGCCGGAGGCCAGTGCCTCCGAGCCATTGCCAGTCGGG
CCTCCAGGCTAAATCTCTTCTCCAGGGGAAACCGCCCTCATGACTCAACAGCAGATGTCTGCTTTTC
CCGGGAAGGGATGCTAGACGCCCTTTCGCTCTCTTTGAAGAGTGCAGCCAAACCGCCCTGATGAAGATG
AAGCACGTGAGCAGCTTTGTCCAGAAGTATCCGACACCATAGCCGAGTTGCGGGAGCTGCAGCCGTCGG
CGAGAGACTTCGAAGTTCGAAGCCTTGTGGCTGTGGTCACTTCGCTGAAGTGCAGTGGTTAGAGAGAA
GGCAGCCGGGGACGTCTATGCCATGAAAATCATGAAGAAGAAGGCTTTGCTGGCCAGGAACAGGTTTCA
TTTTTCGAGGAGGAGAGGAACATATTATCTCGGAGCAGAGTCCCTGGATCCCCAGTTACAGTACGCCCT
TTCAGGACAAAAATAACCTTTACCTGGTCATGGAATATCAGCCTGGAGGGGATTTGCTGTGCTTCTGAA
CAGATACGAGGACCAATTAGATGAGAGCATGATCCAGTTTACCTTGCTGAGCTGATTTTGGCTGTCCAC
AGCGTGCACCAGATGGGATATGTGCATCGAGACATCAAGCCCAGAACATCCTCATCGACCGGACGGGAC
ACATCAAGCTGGTGGATTTGGATCAGCCGCTAAGATGAATCAAATAAGGTGGATGCCAACTCCCCAT
TGGGACCCCGGATTACATGGCTCCGGAAGTGTGACCGTGATGAACGAGGACCGAAGGGGCACATACGGC
TTGGACTGTGACTGGTGGTCTGTCGGAGTTGTTGCTTATGAGATGGTTTATGGGAAGACCCATTACAG
AGGGAACCTCCGCCCGGACCTTCAACAACATCATGAACTTCCAGCGGTTTTTGAAGTCCCAGATGACCC
CAAAGTTAGCAGTGAGCTCCTTGATCTGCTTCAGAGTCTGCTGTGTGTCAGAAAAGAGAGACTGAAGTTC
GAGGGTCTCTGCTGCCACCTTTCTTTGCCAGAACGGACTGGAACAACATCCGTAACCTCCTCCCCCT
TCGTCCCCACCCTCAAGTCTGACGATGACACCTCCAATTTTGTGAACCAGAGAAGAATTCGTGGGTTTC
ATCCTCTGTGTGCCAGCTGAGCCCTCGGGCTTCTCAGGCGAAGAGCTGCCGTTTGTGGGATTTTCGTAC
AGCAAGGCACTGGGGTATCTTGGTAGATCTGAGTCTGTCGTGTCGAGTCTGGACTCCCCTGCCAAGGTTA
GCTCCATGAAAAAGAACTTCTCATAAAAGCAAAGAGCTCCAAGACTCCAGGACAAGTGTCAACAAGT
GGAGCAGGAAATGACCCGTTACATCGCAGAGTGTGAGAGTGGAGGCTGTGCTTAGTCAGAAGGAGGTG



[View online >](#)

GAGCTGAAGGCCTCTGAGACTCAGAGATCCCTCCTGGAGCAGGACCTTGCTACCTACATCACAGAATGCA
GTAGCTTAAAGCGAAGTTTGGAGCAAGCGCGGATGGAGGTGTCCAGGAGGATGACAAAGCTCTGCAGCT
TCTCCACGACATCCGAGAGCAGAGCCGGAAGCTCCAGGAGATCAAGGAGCAGGAGTACCAGGCTCAGGTG
GAGGAGATGAGGCTGATGATGAATCAGCTGGAAGAAGACCTGGTGTACGCCGCAGACGCAGCGATCTCT
ACGAGTCTGAGCTGAGGGAGTCTCGGCTTGCCGCCGAGGAATCAAGCGGAAGGCAAACGAATGTCAGCA
CAAATGATGAAGGCTAAGGACCAAGGGAAGCCTGAAGTGGGAGAATATCCAACTGGAGAAGATCAAT
GCTGAGCAGCAGCTGAAGATCCAGGAGCTCCAGGAGAAGCTGGAGAAGGCTGTAAGCCAGCACAGAGG
CCACCGAGCTCCTGCAGAATATCCGCCAGGCAAAGGAGCGAGCAGAGCGGGAGCTAGAGAAGCTACACAA
CCGGGAAGACTCCTCCGAGGGCATCAAAAAGAAGCTGGTGAAGCCGAGGAACGCCGCCACTCCTGGAG
AACAAAGTAAAGAGACTAGAGACCATGGAGCGTAGAGAGAACAGACTGAAGGATGACATCCAGACAAAGT
CCGAACAGATCCAGCAGATGGCTGATAAAATTCTGGAGCTGGAGGAGAAACATCGGGAGGCTCAGGTCTC
AGCTCAACATCTAGAAGTACACTGAAACAGAAAGAACAGCACTACGAGGAAAAGATCAAGGTATTGGAC
AATCAGATAAAGAAGGACCTGGCCGACAAGGAGAGCCTGGAGAACATGATGCAGAGACACGAGGAGGAGG
CCCACGAGAAGGGCAAGATCCTCAGCGAGCAGAAGGCGATGATCAACGCGATGGATTCCAAGATCCGATC
CCTGGAGCAGAGGATCGTGGAGCTGTGGAAGCCAACAAGCTTGGGGCAAACAGCAGTCTCTTACCAGG
AGGAACATGAAGGCCAGGAAGAGATGATCTCAGAACTCAGGCAGCAGAAATTTTACCTGGAGACGCAGG
CCGGAAGCTGGAGGCCAGAACCAGAAAGCTGGAAGAGCAACTGGAGAAGATCAGCCACCAAGATCACAG
TGACAAGAGTCCGCTGCTGGAGCTGGAACAAGGCTGAGGGAGGTGAGCCTGGAGCACGAGGAGCAGAAAG
CTGGAGCTGAAGCGGCAGCTCACGGAGCTGCAGCTGTCCCTGCAGGAGCGCGAGTCCCAGCTGACGGCCC
TGCAGGCCGCCGGGCAGCGCTGGAGAGCCAGCTCCGCCAGGCGAAGACAGAGCTGGAGGAGACAACCGC
GGAAGCGGAGGAGGAGATCCAGGCGCTCACGGCACATCGAGATGAGATCCAGCGCAAATTCGATGCCCTT
CGCAACAGCTGCACGGTATCACCGACCTGGAGGAGCAGCTGAACCAGCTCACCGAGGACAACGCCGAGC
TCAAACAACAAAATTCTACCTGTCAAACAACCTCGATGAGGCTTCCGGGGCCAATGACGAGATTGTGCA
GCTGCGGAGTGAGGTGGACCATCTCCGCCGTGAGATCACGGAGCGGGAGATGCAGCTCACCGACCCAGAAG
CAAACGATGGAGGCTCTGAAGACGACATGCACCATGCTGGAGGAGCAGGTCTGGACCTGGAGGCCCTGA
ACGACGAGCTGCTGGAGAAGGAGCGCCAGTGGGAGGCTGGCGGAGCGTCTCGCGCAGCAGAAAGTCCCA
GTTTCGAGTGTGAGTTCGAGAGCTACAGAGGATGCTGGACACCGAGAAGCAGAGCAGGGCTAGGGCCGAT
CAGCGGATCACCGAGTCGCGCCAGTGGTGGAGTTGGCGGTGAAGGAACACAAGGCCGAGATTCTTGCTC
TGCAGCAGGCTCTCAAGGAGCAGAAGCTCAAAGCCGAGAGCCTGTGCGACAAGCTCAACGACCTGGAGAA
GAAGCACGCCATGCTGGAGATGAACGCCCGGAGCTTACAGCAGAACTAGAGACAGAGCGGGAGCTCAA
CAGAGGCTTCTGGAGGAGCAAGCCAAATTCAGCAGCAGATGGACCTGCAGAAGAACCACATCTTACAGC
TGACGCAAGGGCTGCAGGAGGCGCTGGACCGGGCGGATCTGCTGAAGACAGAAAGGAGCGACCTGGAGTA
CCAGCTGGAAAACATTAGGTTCTACTCTCACGAGAAAAGTGAAGTGAAGGCAACATCTCTACGCAA
ACCAAACCTATTGATTTCTGCAAGCAAAATGGACCAGCCTGCTAAAAAGAAAAAGTTCTCTGCAGT
ACAATGAGCTGAAGCTAGCCCTGGAAAAGGAGAAAAGCCCGATGCGCGGAGCTGGAGGAGGCCCTTCAGAA
GACCCGCATCGAACTCCGCTCTGCGCGGGAGGAAGTGCCACCAGCAAAGCCACGGACCACCCGCACCCG
TCTACGCCAGCCACTGCGAGGCAGCAGATCGCCATGTCTGCCATTGTGCGGTGCGCCGAGCACCAGCCCA
GTGCCATGAGCCTGCTTGCCCAACATCCAGCCGAGAAAAGGAGTCTGCAACTCCAGAGGAATTCAGCCG
GGCTCTGAAAGAGCGCATGCACCACAACATCCCTCACCGTTTAAATGTGGGCCTGAACATGAGAGCCACC
AAGTGCGCCGTGTGTCTGGATACTGTGCACTTTGGACGCCAGGCATCCAATGCCTCGAATGTCAAGTGA
TGTGTACCCCAATGCTCCACCTGCTTGCCTGCTACCTGTGGCCTGCCAGCTGAATATGCCACACACTT
CACTGAGGCTTCTGCCGGGACAAAATGAACTCCCGGGGCTCCAGAGCAAGGAGCTGGCAGCAGCTTG
CACCTGGAAGGGTGGATGAAAGTGCCAGAAAATAACAACGGGGACAGCAAGGCTGGGACAGGAAGTACA
TTGTTCTGGAGGGTCAAAGTCTCATCTATGACAATGAAGCCAGAGAAGCTGGACAGAGGCGGTTGGA
AGAATTTGAGCTGTGCCTTCTGACGGGACGTATCTATTGATGGTGGCCTTGGTCTTCAAGCTTGA
AATACCGCAAAGCAGATGTCCATACATCCTGAAGATGGAGTCTCACCCACACACCACCTGCTGGCCTG
GGAGAACCCTCTACTTGCTAGCACCCAGCTTCCCGACAAGCAGCGCTGGGTACCCGCTTAGAATCTGT
CGTCGAGGTGGGAGAGTTTCTAGGGAAAAGGCCGAAGCCGATGCTAAATTACTTGGAAACTCTCTGCTG
AAACTGGAGGGGATGACCGGCTTGACATGAACTGCACCTGCCCTTCACTGACCAAGGTAGTGTGGTGG
GCACGGAGGAAGGCTCTACGCCCTGAATGTCTTGAAGAACTCCTTAACCCACATCCCAGGGATTGGCGC
AGTCTTCAAATTTACATCATCAAGGACCTGGAGAAGCTGCTCATGATAGCAGGGGAAGAGCGGGCTCTG
TGCTGGTGGAGCTGAAGAAGGTGAAGCAGTCCCTGGCGAGTACACCTGCCTGCCAGCCGACGCTCT

CCCCAACATATTCGAAGCCGTCAAAGGCTGCCACTTGTTTCGCTGCTGGCAAGATCGAGAACAGCCTGTG
CATCTGCGCCGCTATGCCAAGCAAAGTCGTCATCCTCCGCTACAATGACAACCTCAGCAAGTACTGCATC
CGCAAGGAGATCGAGACCTCAGAGCCCTGCAGCTGTATCCACTTCACCAACTACAGCATCCTCATTGGGA
CCAACAAATTCTATGAGATCGACATGAAGCAGTACACGCTTGACGAGTTCCTGGACAAGAACGACCATT
CTTGCCACCTGCTGTGTTTCGCTCCTCGTCCAACAGCTTCCCTGTCTCCATTGTGCAGGCCAACAGCGCC
GGGCAGCGAGAAGAATACCTGCTGTGCTTCCACGAATTTGGGGTGTTCGTGGATTCTTACGGAAGACGTA
GCCGCACAGATGATCTCAAGTGGAGTCGTTACCTCTGGCCTTCGCTACAGAGAACCTTATCTGTTTGT
GACTCACTTCAACTCCCTGGAAGTCATTGAGATCCAGGCCAGATCCTCACTGGGGAGCCCTGCCCGAGCA
TATCTGAAAATTCAAAACCCTCGCTACCTGGGCCCCGCGATTTCTCCGGAGCGATTTACCTGGCCTCCT
CATACCAGGACAAGTTAAGGGTCATATGCTGCAAAGGAAACCTCGTGAAGGAGTCAGGCACTGAGCAGCA
CCGGGTGCCCTCCACCTCCCGCAGCAGCCCAACAAGCGAGGCCACCAACATACAACGAGCACATCACC
AAACGCGTGGCCTCCAGCCCGCGCCACCAGGAGGCCACCCCGAGAGCAAGCACACCCGACC
GCTACCGAGACAGAGAGGGTCCGACAGAGCTGCGCAGGGACAAGTCTCCAGGCCGCCCTCTGGAGCGGA
GAAGTCCCAGGCCGAATGCTCAGCACTAGGAGAGAGCGGTCCCAGGGAGACTGTTTGAAGACAGCAGC
AGGGGCCGGCTGCCTGCAGGAGCAGTGAGACCCCACTGTCCAGGTTAAACAAGTCTGGGACCAGTCTT
CAGTA

AGCGGACCGACGCGTACGCGGCCGCTCGAG - GFP Tag - GTTTAA

Protein Sequence: >MG216404 representing NM_007708
 Red=Cloning site Green=Tags(s)

```

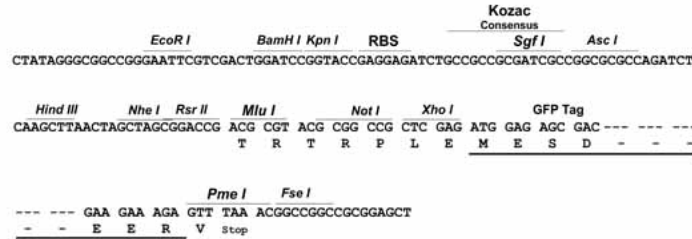
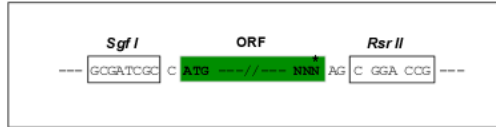
MLKFKYGVNPPPEASASEPIASRASRLNLFQGGKPLMTQQQMSALSREGMLDALFALFECSQPALMKM
KHVSSFVQKYSDTIAELRELQPSARDFEVRSLVGCGHF AEVQVVREKATGDVYAMKIMKKKALLAQEQVS
FFEEERNILSRSTSPWIPQLQYAFQDKNNLYL VMEYQPGD LLSLLNRYEDQLDESMIQFYLAELILAVH
SVHQMGYVHRDIKPENILIDRTGHIKLVDFGSAKMNSNKVDKLP IGTDPDYMAPEVLTVMNEDRRGTYG
LDCDWWSVGVVAYEMVYKTPFTEGTSARTFNNIMNFQRF LKFPDDPKVSSELLDLLQSLLCVQKERLKF
EGLCCHPFFARTDWNINRNSPPPFVPTLKSDDDTSNFDEPEKNSWVSSVCQLSPSGFSGEELPFVGFYSY
SKALGYLGRSESVSSLDSPAKVSSMEKLLIKSKELQDSQDKCHKMEQEMTRLHRRVSEVEAVLSQKEV
ELKASETQRSLLEQDLATYITECSSLKRSLQARMEVSQEDDKALQLLHDIREQSRKLEIKEQEYQAQV
EEMRLMMNQL EEDLV SARRRSDLYESELRESRLAAEFKRKANECQHKLMAKADQKGPEVGEYSKLEKIN
AEQQLKIQELQEKLEKAVKASTEATELLQNI RQAKERAERELEKLNHNREDSSEGIKKKLVEAEERRHSL
NKVKRLETMERRENRLKDDIQTKSEQIQQMADKILELEEKHREAQVSAQHLEVHLKQKEQHYYEEKIKVLD
NQIKKDLADKESLENMMQRHEEEAHEKGKILSEQKAMINAMDSKIRSLEQRIVELSEANKLAANSSLFTQ
RNMKAQEEMI SELRQKQFYLETQAGKLEAQNRL EEQLEKISHQDHSKSRLLLELETRLREVSLEHEEQK
LELKRQLTELQLSLQERESQLTALQAARAAL ESQRQAKTELEETTAEAEIIIQALTAHRDEIQRKFDAL
RNSCTVITDLEEQNLQLTEDNAELNNQNFYLSKQLDEASGANDEIVQLRSEVDHLRREITEREMQLTSQK
QTMEALKTTCTMLEEQVLDLEALNDELLEKERQWEAWRSVLGDEK SQFECRVRELQRMLDTEKQSRARAD
QRITESRQVVELAVKEHKAELALQQALKEQKLKAESLSDKLNDEKKHAMLEMNARSLQQKLETERELK
QRLL EEQAKLQQQMDLQKNHIFRLTQGLQEALDRADLLKTERS DLEYQLENIQVLYSHEKVMEGTISQQ
TKLIDFLQAKMDQPAK KKKVPLQYNELKLAL EKEKARCAEL EALQKTRIELRSAREEAHRKATDHPHP
STPATARQQIAMS AIVRSPEHQPSAMSL LAPPSSRRKESSTPEEF SRRLKERMHHNI PHRFNVGLNMRAT
KCAVCLDTVHFGRQASKCLECQVMCHPKCSTCLPATCGLPAEYATHFTEAF CRDKMNSPGLQSKEPSSSL
HLEGMKVP RNNKRGQQGWDRKYIVLEGSKVL IYDNEAREAGRPVEEFELCLPDGDVSIHGAVGASELA
NTAKADVPIILK MESHPTTCWPGRTL YLLAPSPDKQRWVTALESVVAGGRVSREKAEADAKLLGNSLL
KLEGGDR LDMNCTLPFSDQVVLVGTEEGLYALNVLKNSLTHIPGIGAVFQIYIIKDLEKLLMIAGEERAL
CLVDVKKVKQSLAQSHLPAQPDVSPNIFEAVKGCHLFAAGKIENSLCICAAMP SKVVILRYNDNL SKYCI
RKEIETSEPCSCIHFTNYSILIGTNKFYEIDMKQYTLDEF LDKNDHSLAPAVF ASSNSFPVSIVQANSA
GQREEYLLCFHEFGV FVDSYGRRSRTDDLKWSRLPLAFAYREPYL FVTHFNSLEVI EIQARSSLGSPARA
YLEIPNPRYL GPAISSGAIYLASSYQDKLRVICCKGNL VKESGTEQHRVPSTSRSSPNKRGPPTYNEHIT
KRVASSPAPPEGSPHPREPSTPHRYRDREGRETELRRDKSPGRPLEREKSPGRMLSTRRERSPGRLFEDSS
RGRLPAGAVRTPLSQVNVWDQSSV
  
```

SGPTRRRLE - GFP Tag - V

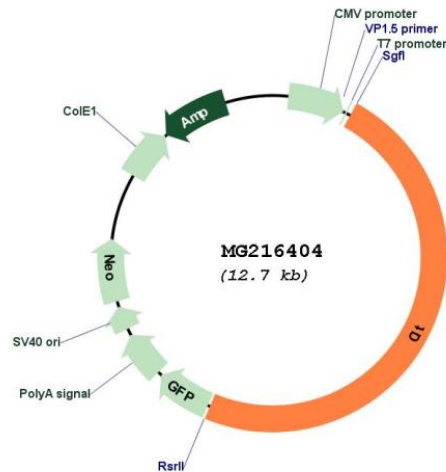
Restriction Sites: SgfI-RsrII

Cloning Scheme:

Cloning sites used for ORF Shuttling:



Plasmid Map:



ACCN: NM_007708

ORF Size: 6165 bp

OTI Disclaimer: The molecular sequence of this clone aligns with the gene accession number as a point of reference only. However, individual transcript sequences of the same gene can differ through naturally occurring variations (e.g. polymorphisms), each with its own valid existence. This clone is substantially in agreement with the reference, but a complete review of all prevailing variants is recommended prior to use. [More info](#)

OTI Annotation: This clone was engineered to express the complete ORF with an expression tag. Expression varies depending on the nature of the gene.

Components:	The ORF clone is ion-exchange column purified and shipped in a 2D barcoded Matrix tube containing 10ug of transfection-ready, dried plasmid DNA (reconstitute with 100 ul of water).
Reconstitution Method:	<ol style="list-style-type: none">1. Centrifuge at 5,000xg for 5min.2. Carefully open the tube and add 100ul of sterile water to dissolve the DNA.3. Close the tube and incubate for 10 minutes at room temperature.4. Briefly vortex the tube and then do a quick spin (less than 5000xg) to concentrate the liquid at the bottom.5. Store the suspended plasmid at -20°C. The DNA is stable for at least one year from date of shipping when stored at -20°C.
RefSeq:	<u>NM_007708.3</u> , <u>NP_031734.3</u>
RefSeq Size:	6898 bp
RefSeq ORF:	6168 bp
Locus ID:	12704
Cytogenetics:	5 F
Gene Summary:	Plays a role in cytokinesis. Required for KIF14 localization to the central spindle and midbody. Probable RHO/RAC effector that binds to the GTP-bound forms of RHO and RAC1. It probably binds p21 with a tighter specificity in vivo. Displays serine/threonine protein kinase activity. Plays an important role in the regulation of cytokinesis and the development of the central nervous system. Phosphorylates MYL9/MLC2.[UniProtKB/Swiss-Prot Function]