

## Product datasheet for **MG216401**

### Caskin1 (NM\_027937) Mouse Tagged ORF Clone

#### Product data:

Product Type:	Expression Plasmids
Tag:	TurboGFP
Symbol:	Caskin1
Synonyms:	3300002N10Rik; C130061I24; C630036E02Rik; mKIAA1306
Mammalian Cell Selection:	Neomycin
Vector:	pCMV6-AC-GFP (PS100010)
E. coli Selection:	Ampicillin (100 ug/mL)

**ORF Nucleotide Sequence:** >MG216401 representing NM\_027937  
Red=Cloning site Blue=ORF Green=Tags(s)

TTTTGTAATACGACTCACTATAGGGCGGCCGGGAATTCGTGCGACTGGATCCGGTACCGAGGAGATCTGCC  
GCCGCGATCGCC

ATGGGGAAGGAGCAGGAGCTGGTGCAGGCAGTGAAGGCGGAGGACGTGGGGACCGCGCAGAGGCTGCTGC  
AGAGGCCCGCGCCGGGGAAGGCCAAGCTCCTGGGCTCTACCAAGAAGATCAATGTCAACTTCCAGGACCC  
GGATGGCTTCTCAGCCCTGCACCATGCCGCCCTGAATGGCAACACAGAATTGATCTCTCTGCTGCTGGAG  
GCTCAGGCTGCTGTAGACATCAAGGACAACAAAGGTATCGCGCCGTTGCACTACGCCCTGGCAGGGCC  
GGAAGGAGCCCATGAAGCTGGTGTGAAGGCAGGCTCAGCAGTAAATGTCCATCCGACGAAGGCCACAT  
ACCCCTGCATTGGCTGCCAGCATGGTCACTACGATGTGTGAGAGATGCTACTGCAGCATCAGTCCAAC  
CCCTGTATGGTAGACAACCTCTGAAAGACACCTCTGGACCTGGCCTGTGAGTTCGGCCGCGTAGGGGTGG  
TCCAGCTGCTGCTAAGTAGCAACATGTGTGAGCCTTCTGGAGCCCGACAGGGGACACCACCGACCC  
CAACGGCACCAGCCCCCTGCACCTGGCAGCCAAGAATGGCCACATCGACATCATCAGGCTCCTTCTTCAG  
GCCGGCATCGACATTAACCGCCAGACCAAGTCTGGCACAGCTTTCATGAGGCCGCACTCTGTGGGAAAA  
CAGAAGTGGTTCGGCTACTGTTGGATAGTGGGATCAATGCCAGGTGAGGAACACCTACAGCCAGACAGC  
ACTGGACATGTACACCAATTTACAACGTCCCAGGCCAGCAAGGAGATCAAGCAACTGCTTCGAGAGGCC  
TCAGCGGCTCTGCAGGTCCGGGCAACAAAGGATTACTGTAACAACATGATCTGACCAAGTCTCAATGTGA  
AGGCTGGGACATTATCAGGTAAGTGAACAGCATCCAGATGGCCGGTGGAAAGGCTGTATTGATGACAA  
CCGGACAGGCAATGACAGGGTGGGCTACTTCCCATCTTCCCTGGGGGAGGCTATTGTCAAGCGAGCAGGT  
TCCCGGACAGGCAGTGAGCCAAGCCACCCAGGGAGGTGGTCACTGGTCCCTCTGCACCCCGGAGG  
AGATCTGGGTGCTGAGGAAGCCTTTTGCAGGTGGAGATCGCAGTGGCAGCTTGAAGCAATGTGGCCGGGG  
CAGGAGTACTGGGGCCATGCCTTGCATGCAGGCTCTGAAGGAGTTAAGCTCCTGGCAACCGTGCTTTCC  
CAGAAGTCAGTCTCTGAGTCCAGCCAGGAGATAGCCCGGTCAAGCCTCCAGAGGGCTCTTCAGGTGCGG  
CCCGTCCCAGCCTCCAGCAGCCATGTGGCAGGTATATGGGAGCAGCCACCGAAGAAGCTGGAATC  
GGCCTCAGCCTCGCCTCTGAGGGCAAGAGTGTGAGGCGGTCAAGTCAAGTGGCTTGCCACATTCCAGCTA  
CAGCTCTATGCCCAACTTACCAGTGTGGCTATGACCTGCCACCATCAGTCGTATGACCCCTGAGG



ACCTCACAGCCATTGGCGTTACCAAGCCAGGCCACCGTAAGAAGATTACGGCAGAGATCAGCGGCCTGAA  
CATCCCTGACTGGCTGCCTGAACACAACCCCGCTAACCTGGCTGTGTGGCTGTCAATGATTGGTCTGGCC  
CAGTATTACAAGGTGCTGGTGGACAACGGCTATGAGAACATTGATTTATCACCAGATATCACCTGGGAGG  
ACCTGCAGGAGATCGGTATACCCAAGCTGGGACACCAAAAAGAAGCTGATGCTGGCAGTGAGGAAACTGGC  
AGAGCTGCAAAAAGCAGAATACTCCAAGTATGAGGGGGGACCCTGCGCCGAAAGACACCCCAATCACTT  
GAAATGATGGCTATTGAGTCACCGCCCCCATCTGAGCCTGCTGCAGCAGAGTGCCAGTCTCCCAAGTGA  
CCACCTTCCAGGACAGTGAACTCAGTGGAGAGCTGCAAGCTGCCCTGTCTGGCCAGCTGAAGCAGGTGC  
AGCTGCTGTTGAGAAATCCTCCAACCACCTGCCACCCACTCCGAGGACAACCTCTCGGGAGTCCAGCCTG  
AGTGGACGGGCTCGGCACATAAGCAGCTCTCAGGAGCTGTTGGGGATGGGCCTCCAGGGCTGGCAGTC  
CTATGTCACGAAGTCAGGAATACCTGCTGGATGAGGGGATGGCTCCTGGCACCCACCCCAAGGAGGTGGC  
GTCCAGCCGCATGGCCACAGCGTCAAGAGGGCCAGTGTCCCCCGGTGCCCGCAAGCCACGACAGGTGC  
CTTCCGTCTGGTGCCAGCCACTTACACCCCCACAGACGCCACCAAAAGCTCAGCCAGGCTCCCTCAGG  
CCCTTGGGGACCTCATGGTCCAGCCACAGCCAAGGTGAAGCCACCCACAGCTGCTACCACCAACAGA  
CCGGCCATGTACCCCGTTCTTGCCTCAGTCACCCACACACCGTGGCTTTGCCTATGTGTGCCTCAG  
CCAGTTGAGGGCGAGGTAGGGCCACCTGCTCCCGACCTGCGCCCCACCAGTACCCGACGTGTACCTA  
CTCTATGCTTGCCCCAGAACTGATGTAGAGCCTGGGAGGCCAAGAAACGTGCCACAGCTTGAATCG  
CTATGCAGCATCCGACAGTGAGCCTGAGAGGGATGAGCTGCTGGTGGCGGCTGCCGCTGGACCTATGCC  
ACAGTCCAGAGGCGTGTGGTCCGAGCCATTAGTGTAGGGCTCCTGCTGGCAGGACAAGAATGTTAACC  
GCAGTCAGTCTTTGCTGTGCGGCCACGTAAAGAGGGGCCCCACCCTCCACCAACAGCTCCAGCTC  
GGCCATGGCCAGTGCCAACTAGCCGACGAGCCGGCTCCAGACGTTGAGGCAGAGGACGGCCGGCTAGGG  
GTCCGGGCGCAACGCCGTCGGGCTAGTGATCTCGCCGGCAGTGTGGACACAGGTAGTGTGGCAGTGTGA  
AGAGCATCGCAGCCATGTTGGAGTGTCTTCCATTGGGGTGGAGGGGGGCTATTCGACAGGCCCCCGA  
AGGCCACCCACACCCCGTCCCGCCAGTCCAGAACCGGGCCGAGTACCTACCGTGTGGCTCTGTGAAG  
CACAAAGAGGCCATTGGGCTGACGGTGAAGTGGTGAACCGGCGCCGTACACTCAGTGGCCAGTCACTG  
GGCTTTTGGCCACTGCTCGCCGGGGTCTGGGGAACCTGCAGAGCAGAGTCATTTTATGGAGGATGGCAC  
AGCCCCACAACGGCTTCGAGGTCCAGCTAAGGGTGAGGCAAGTGGCGAGGGTCTCCCTTGGCCGGTA  
GAGGCCAGTGCCACGCTCAAGAGGCGCATCCGGCCAAGCAGAGCCAACAAGAGAACGTCAAATTCATCC  
TGACAGAGTCTGACACAGTGAAGCGCAGGCCTAAGGCTAAGGAGCCTGACACTGGCCCTGAGCCACCCCC  
ACCACTGTCTGTATCAGAATGGCACAGCCACCGTTCGCCGAAGGCCAACCTCAGAGCAGGCTGGGCT  
CCAGAGCTGCCCTCCTCCCTCCTGCTGAGCCCCACCCGCTGACCTGATGCAGCTGCCTCCACTGC  
CCCTGCCTGATGGCAATGCACGGAAGCCTGTGAAGCCACCCGCTCTCCCAAGCCATTCTGTCTCAGCC  
TGTGTCCAAGATCCAGGGCTCACCTACACCTGCCTCCAAGAAGGTGCCACTGCCAGGCCCTGGCAGCCCA  
GAGGTAAGCGTGTCTATGGCACGCCACCGCCGTGTACCCAAAGCCGCTCCGCCACCTACAGCACCCA  
AGCCAGCCAAGGCTTTGGCGGACTACAGTCCAGCAGCGCCACCCCTCGCCTGTGCCCTCTCCAGCGCG  
TCAGCCGCCAGCAGCGCTCATCAAGCCAGTGTTCGCCGCCCTCGCAGAGGCCAGCCCTGTCAAGCCC  
CCTTCCCCAGGGACACCCGCGCTGCACGTACCCGCCAAGCCCTCGCGCTGCTGTTCAAGTGGTCTCCG  
GACCCCAAGTACTCAGATTGTGCTTACCCGGGGACAGCGCTCGGCAGAAGCTGGAAGAGACTAGCGC  
GTGTTTGGCTGCAGCACTGCAGGCAGTGGAGGAGAAGATAAGGCAGGAAGATGGACAAGGCCCTCGCCCC  
TCCTCCATCGAGGAGAAGAGCACTGGCAGCATCTGGAAGACATCGGCAGCATGTTGACGACCTGGCC  
ACCAGCTGGACCCATGTGGAG

ACGCGTACGCGGCCGCTCGAG - GFP Tag - GTTTAA

**Protein Sequence:**

>MG216401 representing NM\_027937

Red=Cloning site Green=Tags(s)

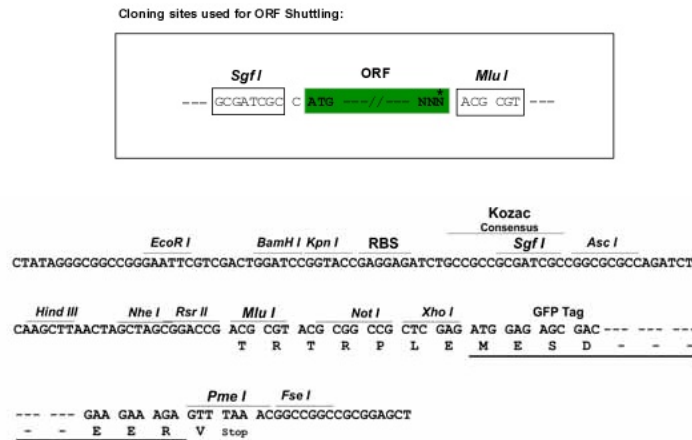
MGKEQELVQAVKAEDVGTQRLLQRPRPGKAKLLGSTKKINVNFQDPDGFSAHHAALNGNTELSLLE  
 AQAAVDIKDNKMRPLHYAAWQGRKEPKMLVLKAGSAVNVPSDEGHIPLHLAAQHGHYDVSEMLLQHQSN  
 PCMVDSNGKTPLDLACEFGRVGVVQLLLSSNMCAALLEPRPGDTPDNGTSPLHLAAKNGHIDIIRLLQ  
 AGIDINRQTKSGTALHEAALCGKTEVVRLLLDSGINAQVRNTYSQTALDIVHQFTTSQASKEIKQLLREA  
 SAALQVRATKDYCNNDLTSLVKAGDIIITVLEQHPDGRWGCIDHNRGTNDRVGYFPSSLGEAIVKRAG  
 SRTGSESPQGGGSLGPSAPPEEIWVLRKPFAGGDRSGSLSNVAGGRSTGGHALHAGSEGVKLLATVLS  
 QKSVSESSPGDSPVKPEGSSGAARSQPPAAHAGQVYGEQPPKKLESASASASEGKSAEAVSQWLATFQL  
 QLYAPNFTSAGYDLPTISRMPEDLTAIGVTKPGHRKKITAEISGLNIPDWLPEHKPANLAVWLSMIGLA  
 QYYKVLVDNGYENIDFITDITWEDLQEIGITKLGHQKMLAVRKLAEQKAEYSKYEGGPLRRKTPQSL  
 EMMAIESPPPSEAAAECQSPKMTTFQDSELSGELQAALSGPAEAGAAAVEKSSNHLPPTRTTSRESSL  
 SGRARHISSEQLLDGPPGPGSPMSRQSEYLLDEGMAGTPPKEVRSRHHGHSVKRASVPPVPGKPRQV  
 LPSGASHFTPPQTPKAQPGSPQALGGPHGPATAKVKPTPQLLPPDRPMSRSLPQSPTHRGFAYVLPQ  
 PVEGEVPPAPGAPPPVPAAVPTLCLPPEVDVEPGRPKKRAHSLNRYAASDSEPERDELLVPAAGPYA  
 TVQRRVGRSHSVRAPAGTDKNVNRSQSFVVRPKKGGPPPPPKRSSAMASANLADEPADVEAEDGRLG  
 VRAQRRASDLAGSVDTSAGSVKSAAMLELSSIGGGRAIRRPPEGHPTPRPASPEPGRVATVLSVK  
 HKEAIGPDGEVVNRRLTSGPVTGLLATARRGSGEPAEQSHFMEDGTARQLRGPAGKGEASAEGPLARV  
 EASATLKRRIKQSQQENVKFIILTESDVKRRPKAKEPDTGPEPPPLSVYQNGTATVRRRPTSEQAGP  
 PELPPPPPAEPPADLMQLPPLPLPDGNARKPKVPPVSPKILSQPVSKIQGSPTASKKVPPLPGGSP  
 EVKRAHGTPPVSPKPPPPPTAPKPAKALAGLQSSSATPSPVSPARQPPAALIKPASSPPSQSASPVKP  
 PSPGTPALHVPKPPRAASVVSPPVASDCASPGDSARQKLEETSACLAAALQAVEEKIRQEDGQGRP  
 SSIEEKSTGSILEDIGSMFDDLADQLDAMLE

TRTRPLE - GFP Tag - V

**Restriction Sites:**

SgfI-MluI

**Cloning Scheme:**



ACCN:

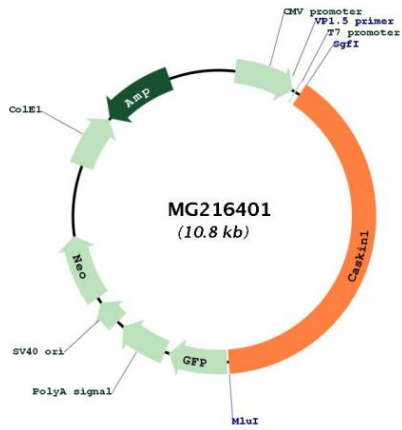
NM\_027937

ORF Size:

4293 bp

<b>OTI Disclaimer:</b>	The molecular sequence of this clone aligns with the gene accession number as a point of reference only. However, individual transcript sequences of the same gene can differ through naturally occurring variations (e.g. polymorphisms), each with its own valid existence. This clone is substantially in agreement with the reference, but a complete review of all prevailing variants is recommended prior to use. <a href="#">More info</a>
<b>OTI Annotation:</b>	This clone was engineered to express the complete ORF with an expression tag. Expression varies depending on the nature of the gene.
<b>Components:</b>	The ORF clone is ion-exchange column purified and shipped in a 2D barcoded Matrix tube containing 10ug of transfection-ready, dried plasmid DNA (reconstitute with 100 ul of water).
<b>Reconstitution Method:</b>	<ol style="list-style-type: none"><li>1. Centrifuge at 5,000xg for 5min.</li><li>2. Carefully open the tube and add 100ul of sterile water to dissolve the DNA.</li><li>3. Close the tube and incubate for 10 minutes at room temperature.</li><li>4. Briefly vortex the tube and then do a quick spin (less than 5000xg) to concentrate the liquid at the bottom.</li><li>5. Store the suspended plasmid at -20°C. The DNA is stable for at least one year from date of shipping when stored at -20°C.</li></ol>
<b>Note:</b>	Plasmids are not sterile. For experiments where strict sterility is required, filtration with 0.22um filter is required.
<b>RefSeq:</b>	<a href="#">NM_027937.2</a> , <a href="#">NP_082213.2</a>
<b>RefSeq Size:</b>	6190 bp
<b>RefSeq ORF:</b>	4296 bp
<b>Locus ID:</b>	268932
<b>UniProt ID:</b>	<a href="#">Q6P9K8</a>
<b>Cytogenetics:</b>	17 A3.3
<b>Gene Summary:</b>	May link the scaffolding protein CASK to downstream intracellular effectors.[UniProtKB/Swiss-Prot Function]

Product images:



Circular map for MG216401