

## Product datasheet for **MG216381**

### **Galk2 (NM\_175154) Mouse Tagged ORF Clone**

#### **Product data:**

Product Type:	Expression Plasmids
Product Name:	Galk2 (NM_175154) Mouse Tagged ORF Clone
Tag:	TurboGFP
Symbol:	Galk2
Synonyms:	2810017M24Rik; AI327030; Gk2
Mammalian Cell Selection:	Neomycin
Vector:	pCMV6-AC-GFP (PS100010)
E. coli Selection:	Ampicillin (100 ug/mL)



[View online »](#)

**ORF Nucleotide Sequence:**

>MG216381 representing NM\_175154  
 Red=Cloning site Blue=ORF Green=Tags(s)

TTTTGTAATACGACTCACTATAGGGCGGCCGGAATTCGTCGACTGGATCCGGTACCGAGGAGATCTGCC  
 GCC**CGGATCGCC**

ATGCCCGACCTATCTGAAAGATTGCTGAAGCTAAAAGAGATGTTAACTCTAAATTTGGGTCCACACCCA  
 AGTTTTATGTTTCGAGCCCAGGAAGAGTCAACATAATAGGTGAGCACATAGATTACTGTGGATATTCCTG  
 TATTCATGGCTGTGGAACAAGACATGTTAATAGCTGTGGAACCTGTGAAAACACACACTCTCCAAGT  
 GCTAATACAGACCCCTTGTATCCAGACTTCAGTACTACAGCTAATAACATCTGTATCGACAAGACCAAA  
 CTCTATGGCACAACACTACTTCTTGTGTGGCTTAAAGGGAATTCAGGAACACTTTGGCCTTAGTAAGCTGCC  
 TGGAAATGAATTGCCTGGTAGATGAAAATATACCCCGAGTTCGGGCTCTCCAGCTCCAGTGTCTGGTT  
 TGCTGTGTGGTTAGTGACTCTCACGGTGTGGGACTGAGACTTCCAAGGTGGAACCTGCAGAAATCT  
 GTGCCAAGAGTGAGCGCTACATAGGCACTGAAGGTGGCGCATGGACCAGTCCATATCATTCTTGCAGA  
 AGAAGGAAGTCCAAGTTAATAGAATTTAGCCCTCTGAGAGCGACTAATGTGAAGCTCCCAGTGGGGCA  
 GTCTTTGTGATTGCCAACAGCTGCATGGAATGAACAAGGCGGCCACTTACATTTCAATGTCAGGGTGA  
 TGGAGTGTGACTGGCGCAAAGGTCCTTGCTAAACACAAGGCTTGCAATGGGATAATGTCTGCGGCT  
 AGAGGAAGTGCAAGCAAACCTCGGGATTAGTCTGGAAGAGATGCTGTTGGTACAGAGGATGCCCTTCAT  
 CCTGAACCCTACAGCCGGGAGGAGATCTGCAGGTGCCTGGGAATTAGCCTCGAGAGACTCCGCACCCAAA  
 TCCTGACTCCAAATACTCAAGATGAACTCACCTTAAAGCTCTACCAGCGGGCCAAGCAGTGTACAGTGA  
 GGCTGCACGCGTGTGCAGTTAAGCAGGTATGTGAAGATGCCAGACAACGCAGTCCAGCTGTGGGG  
 GAGCTAATGAACCAGAGCCACAGAAGCTGCCGGGACATGTATGAGTGCAGCTGCCCTGAGCTGGACCAGC  
 TAGTGGACATCTGCCGGAAGTTTGGGGCAAAGGCTCACGACTTACTGGAGCAGGATGGGGAGGCTGCAC  
 TGTGTCCCTCGTCCCGCTGACATGCTGTCCAGCTTCTCGCCAGTGTGCACGAAGCTTATTACCAGGGG  
 AACACATCCCGCTGGCTCAGGAGAAGCATAGCTTGTGGCCACCAAGCCTGGAGCGGGGCTTGGTTT  
 TCCGTGAGGTC

AG**CGGACCG**ACGCGTACGCGGCCGCTCGAG - GFP Tag - GTTTAA

**Protein Sequence:**

>MG216381 representing NM\_175154  
 Red=Cloning site Green=Tags(s)

MPDLSERLLKLEMFNSKFGSTPKFYVRAPGRVNIIGEHIIDYCGYSVIPMAVEQDMLIAVEPVKHTLQL  
 ANTDPLYPDFSTANNICIDKTKPLWHNYFLCGFKIQEHFGLSKLPGMNCLVDGNIPSSGLSSSSALV  
 CCAGLVTLTVLGLRLSKVELAEICAKSERYIGTEGGMDQSI SFLAEEGTAKLIEFSPLRATNVKLP  
 VFIANSCEMKNKAATSHFNVRVMECLAAKVLAKHKLQWQDNLRLLEEVQSKLGI SLEEMLLVTE  
 DALHPEPYSREEICRCLGISLERLRTQILTPNTQDELTFKLYQRAKHVYSEAAARVLQFKQVCE  
 DAPDNAVQLLGEELMNQSHRSCRDMYECSCPELDQLVDICRKF GAKGSRLTGAGWGGCTVSLV  
 PADMLSSFLASVHEAYYQGNLSRLAQEKHSLFATKPGGGALVFREV

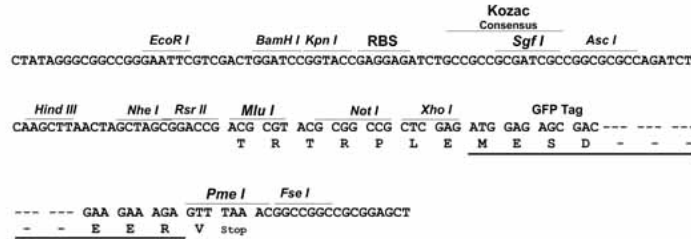
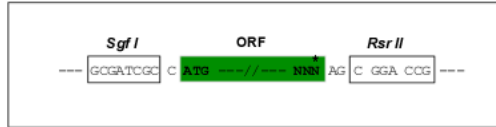
SGP**TRRRLE** - GFP Tag - V

**Restriction Sites:**

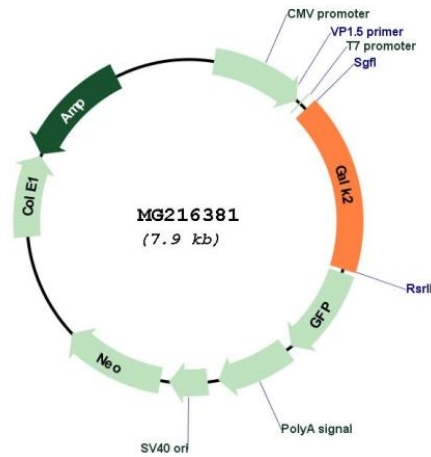
Sgfl-RsrII

Cloning Scheme:

Cloning sites used for ORF Shuttling:



Plasmid Map:



ACCN: NM\_175154

ORF Size: 1341 bp

OTI Disclaimer: The molecular sequence of this clone aligns with the gene accession number as a point of reference only. However, individual transcript sequences of the same gene can differ through naturally occurring variations (e.g. polymorphisms), each with its own valid existence. This clone is substantially in agreement with the reference, but a complete review of all prevailing variants is recommended prior to use. [More info](#)

OTI Annotation: This clone was engineered to express the complete ORF with an expression tag. Expression varies depending on the nature of the gene.

<b>Components:</b>	The ORF clone is ion-exchange column purified and shipped in a 2D barcoded Matrix tube containing 10ug of transfection-ready, dried plasmid DNA (reconstitute with 100 ul of water).
<b>Reconstitution Method:</b>	<ol style="list-style-type: none"><li>1. Centrifuge at 5,000xg for 5min.</li><li>2. Carefully open the tube and add 100ul of sterile water to dissolve the DNA.</li><li>3. Close the tube and incubate for 10 minutes at room temperature.</li><li>4. Briefly vortex the tube and then do a quick spin (less than 5000xg) to concentrate the liquid at the bottom.</li><li>5. Store the suspended plasmid at -20°C. The DNA is stable for at least one year from date of shipping when stored at -20°C.</li></ol>
<b>RefSeq:</b>	<u><a href="#">NM_175154.3</a></u> , <u><a href="#">NP_780363.1</a></u>
<b>RefSeq Size:</b>	2520 bp
<b>RefSeq ORF:</b>	1344 bp
<b>Locus ID:</b>	69976
<b>Cytogenetics:</b>	2 F1
<b>Gene Summary:</b>	Acts on GalNAc. Also acts as a galactokinase when galactose is present at high concentrations (By similarity).[UniProtKB/Swiss-Prot Function]