

## Product datasheet for **MG216374**

### **KIhI25 (NM\_182782) Mouse Tagged ORF Clone**

#### **Product data:**

<b>Product Type:</b>	Expression Plasmids
<b>Tag:</b>	TurboGFP
<b>Symbol:</b>	KIhI25
<b>Synonyms:</b>	2810402K13Rik; BC027373; Enc-1
<b>Mammalian Cell Selection:</b>	Neomycin
<b>Vector:</b>	pCMV6-AC-GFP (PS100010)
<b>E. coli Selection:</b>	Ampicillin (100 ug/mL)



[View online »](#)

**ORF Nucleotide Sequence:** >MG216374 representing NM\_182782  
 Red=Cloning site Blue=ORF Green=Tags(s)

TTTTGTAATACGACTCACTATAGGGCGCCGGGAATTCGTGCGACTGGATCCGGTACCGAGGAGATCTGCC  
 GCCGCGATCGCC

ATGTCAGTCAGTGTTACGAGACCCGCAAGTCGAGGAGCAGCACGGGCTCCATGAACATCTCAGTCTTCC  
 ACAAGGCTTCACACCCTGACTGTGTGCTGGCCACCTCAACTCTGCGCAAGCACTGCATGTTACGGA  
 TGTCACACTCTGGGCTGGTGACCGAGCCTTTCCTTGCCATCGTGGGTGCTGGCTGCCTCCAGCCGATAC  
 TTTGAGGCCATGTTACGCCACGGCCTGCGGAAAGCCGGGATGATACGGTCACTCCAGGACAACCTGC  
 ACCCCGAGGTGTTGGAGCTGCTGTTGGACTTTCCTACTCTCTCGCATCGTCAATGAGGAGAACGC  
 GGAGTCACTACTAGAGGCTGGTGACATGCTGCAGTTCATGATGTCCGGGATGCAGCTGCTGAGTTCCTG  
 GAGAAGAATCTTCCCTCCAAGTGCCTTGGCATGATGGTGTCTGATGCCACCAGTCCGACGGC  
 TCTACGAGTCTCATGCCGAATGCTCCTGGTGCAATTTGAGACGGTGGCGCAGAGCGAGGACTTCAACAG  
 TCTCTTAGGGACACGCTGTTGGACCTCATCTCCAGAGACGAGCTGGAGACTGAGGATGAGCGCGTGGTC  
 TTTGAGGCCATCTGCAGTGGGTGAAGCATGACTTAGAGCAGAGGAAGGCCACCTGCCCTGCTCCTGC  
 GTAACGTGCGACTGGCCCTGCTGCCCTCAGACTGCCTGAAGAATGCCGTATCTGGAGAGGCCCTCCTCAT  
 GGCAGACGAGTGCACCAAGCTCATCTTAGACGAGGCCCTCCGCTGCAAGACCAAGATCTTGTGAATGAT  
 GGTGTGGTACCAGTCCCTTTCGCCGGCTCGCAAGGCAGGTACACACTGCTCATCTTGGGAGGCCAGA  
 CCTTCATGTGTGACAAGATCTACCAAGTGGACCACAAAGCCAAGGAGATTATCCCAAGGCAGATCTGCC  
 AAGCCCCGGAAGGAGTTCAGTGCTTCAGCGATTGGTTGCAAGGTCTATGTGACTGGAGGCAGGGGCTCT  
 GAGAATGGAGTCTAAGGATGTCTGGGTGATGACTGTCCATGAGGAATGGTCTAAGGCCGCCCTA  
 TGCTGATTGCCCGCTTTGGCCATGGCTCAGCCGAGCTGGAGAAGTGTCTATGTGGTGGGGGGCATA  
 ATCCCTAGCAGGATTTTCCCTGCCTCCCTTCTGTCTCCCTGAAGCAAGTAGAGAAATATGACCCTGGG  
 GATAATAAGTGGACTATGGTGGCCCCATGAGAGACGGTGTGAGCAATGTGCAGTGGTGGTGCACAGC  
 TGAAACTCTTTGTGTTGGAGGGACAGCATCCACCGAGATATGGTGTCCAAAGTCCAGTGTTTGACCC  
 CTCGGAGAACCAGTGGACAATCAAAGCAGAGTGTCCCAGCCCTGGCGATACACAGCCGCGCTGTCTG  
 GGCAGCCAGATCTTCATCATGGGAGGTGATACAGAGTACACAGCAGCTTCCAGCCTACCGCTTCGACTGTG  
 AGACCAACCAGTGGACGCGGATTGGGGACATGACAGCCAAACGCATGTCTGTGATGCCGTGGCTTCAGG  
 CAACAAGTGTATGTGGTGGGAGGCTACTTTGGGACCCAGAGGTGAAGACCCTGGACTGCTATGACCCT  
 ACTTCAGACACATGGAAGTGCATCACCCTGTGCCCTACTCTCATTCCACGGCCTTTGTAGCACCT  
 GGAAGCATCTGCCTGCA

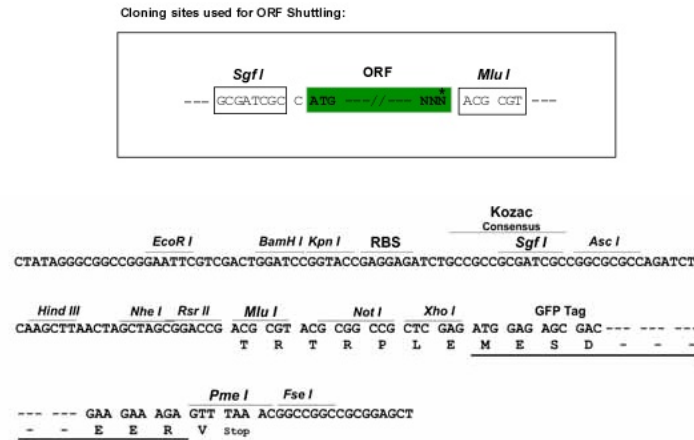
ACGCGTACGCGGCCGCTCGAG - GFP Tag - GTTTAA

**Protein Sequence:** >MG216374 representing NM\_182782  
 Red=Cloning site Green=Tags(s)

MSVSVHETRKSRSSTGSMNISVFHKASHPCVLAHLNLRKHCMFDTVTLWAGDRAFPCHRAVLAASSRY  
 FEAMF SHGLRESRDDTVNFDNLHPEVLELLLDFA YSSRIVINEENAESLLEAGDMLQFHDVRAAAEFL  
 EKNLSPSNCLGMMVLSDAHQCRRLYEFSCRMSLVHFETVRQSEDFNSLSRDTLLDLISRDELETEDERVV  
 FEAILQWVKHDLEQRKAHLPLLLRNVRLLLPDCLKNAVSGEALLMADECTKLILDEAFRCKTKILLND  
 GVVTS PFARPRKAGHTLLILGGQTFMCDKIYQVDHKAKEIIPKADLPSPRKEFSASAIGCKVYVVTGGRGS  
 ENGVS KDVVYVYDTVHEEWSKAAPMLIARFHGSAELENCLYVVGHTSLAGIFPASPSVSLKQVEKYDPG  
 DNKWTMVAPMRDGVSNAAVVS AKLKL FVGGT SIHRDMVSKVQCFDPS ENRWT IKA ECPQPWRYTAAAVL  
 GSQIFIMG DTEYTAASAYRFDCE TNQWTRIGDMTAKRMSCHAVASGNKLYVVG YFGTQRCKTLD CYDP  
 TSDTWNCITTVPSLIPTAFVSTWKHLPA

TRTRPLE - GFP Tag - V

**Restriction Sites:** SgfI-MluI

**Cloning Scheme:**


**ACCN:** NM\_182782

**ORF Size:** 1767 bp

**OTI Disclaimer:** The molecular sequence of this clone aligns with the gene accession number as a point of reference only. However, individual transcript sequences of the same gene can differ through naturally occurring variations (e.g. polymorphisms), each with its own valid existence. This clone is substantially in agreement with the reference, but a complete review of all prevailing variants is recommended prior to use. [More info](#)

**OTI Annotation:** This clone was engineered to express the complete ORF with an expression tag. Expression varies depending on the nature of the gene.

**Components:** The ORF clone is ion-exchange column purified and shipped in a 2D barcoded Matrix tube containing 10ug of transfection-ready, dried plasmid DNA (reconstitute with 100 ul of water).

- Reconstitution Method:**
1. Centrifuge at 5,000xg for 5min.
  2. Carefully open the tube and add 100ul of sterile water to dissolve the DNA.
  3. Close the tube and incubate for 10 minutes at room temperature.
  4. Briefly vortex the tube and then do a quick spin (less than 5000xg) to concentrate the liquid at the bottom.
  5. Store the suspended plasmid at -20°C. The DNA is stable for at least one year from date of shipping when stored at -20°C.

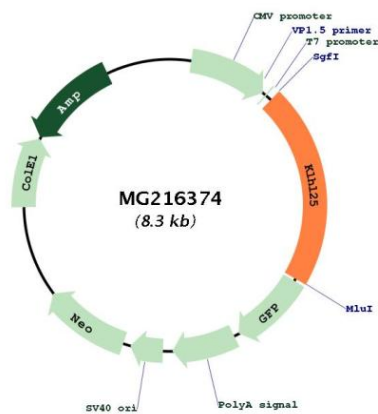
**Note:** Plasmids are not sterile. For experiments where strict sterility is required, filtration with 0.22um filter is required.

**RefSeq:** [NM\\_182782.1](#)

RefSeq Size:	2314 bp
RefSeq ORF:	1770 bp
Locus ID:	207952
UniProt ID:	<a href="#">Q8R2P1</a>
Cytogenetics:	7 D1

**Gene Summary:** Substrate-specific adapter of a BCR (BTB-CUL3-RBX1) E3 ubiquitin ligase complex required for translational homeostasis. The BCR(KLHL25) ubiquitin ligase complex acts by mediating ubiquitination of hypophosphorylated EIF4EBP1 (4E-BP1): ubiquitination and subsequent degradation of hypophosphorylated EIF4EBP1 (4E-BP1) probably serves as a homeostatic mechanism to maintain translation and prevent eIF4E inhibition when eIF4E levels are low. The BCR(KLHL25) complex does not target EIF4EBP1 (4E-BP1) when it is hyperphosphorylated or associated with eIF4E.[UniProtKB/Swiss-Prot Function]

### Product images:



Circular map for MG216374