

Product datasheet for **MG216362**

181004IL15Rik (NM_001163145) Mouse Tagged ORF Clone

Product data:

Product Type: Expression Plasmids
Tag: TurboGFP
Symbol: 181004IL15Rik
Synonyms: Kiaa1644; Shisall
Mammalian Cell Selection: Neomycin
Vector: pCMV6-AC-GFP (PS100010)
E. coli Selection: Ampicillin (100 ug/mL)

ORF Nucleotide Sequence: >MG216362 representing NM_001163145
Red=Cloning site Blue=ORF Green=Tags(s)

TTTTGTAATACGACTCACTATAGGGCGGCCGGAATTCGTCGACTGGATCCGGTACCGAGGAGATCTGCC
GCCGCGATCGCC

ATGACCAGTTGTGGCCAGCGGTCCCGGAACGTGCTCGCAGTATTCTCCCTGTTGTTTCTGCAGTCTGT
CCGCACATTTCCGGGTCTGTGAGCCTTACACGGATCACAAGGCCGCTACCACTTTGGCTTCCACTGCC
CCGGCTCTCGGACAACAAAACCTTCGTCTCTGCTGTACCCATAACAACACTGTCTTCAAATACTGCTGC
AACGAGACGGAGTCCAGGCGGTATGCAGGCAACCTCACGGCCGCCGCCGAGGGCTACATGCACAACA
ACTACACGGCGCTTCTGGGAGTGTGGATTTACGGCTTCTCGTGCTCACGCTGCTGGTCTGGATCTGCT
CTATTATCCGCCATGAACACTACGATATTTGCAAGGTTTACCTCACTCGGTGGGGATCCAGGGACGGTGG
ATGAAACAGGACCCCGCGGTGGGGAAACCTGCTCGAGCCCTCGGCCAGGACAGCCGCCACAGC
CGCAGCCTCCCCCTGGTACCCTGCCGAAGCCCCCAGGCTGTGCACACTGCGGGGAGACACGCACAG
CCCACCCTGATGACCTTCCAGAGCTCATCCGCC

ACGCGTACGCGGCCGCTCGAG - GFP Tag - GTTAA

Protein Sequence: >MG216362 representing NM_001163145
Red=Cloning site Green=Tags(s)

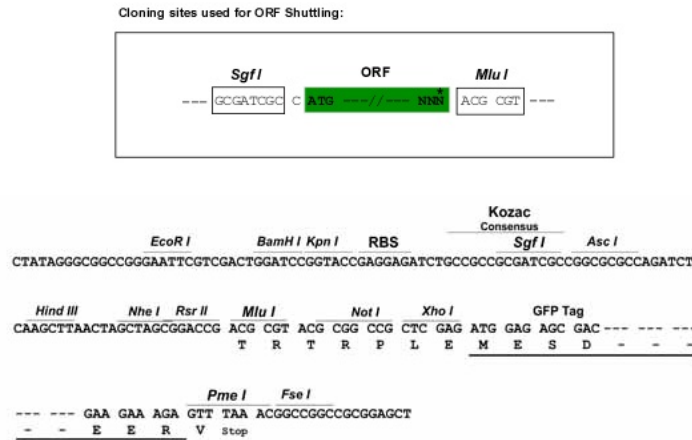
MTSCGQSRNVLAVFSLLPVLSAHRVCEPYTDHKGRYHFGFHCPRLSDNKTFVLCCHHNNTVFKYCC
NETEFQAVMQANLTAGPEGYMHNNYTALLGVWIYGFVLLVLDLLYYSAMNYDICKVYLTRWGIQGRW
MKQDPRRWGNPARAPRPGQPAPQPQPPPGTLPQAPQAVHTLRGDTHSPPLMTFQSSSA

TRTRPLE - GFP Tag - V

Restriction Sites: SgfI-MluI



Cloning Scheme:



ACCN: NM_001163145

ORF Size: 594 bp

OTI Disclaimer: Due to the inherent nature of this plasmid, standard methods to replicate additional amounts of DNA in E. coli are highly likely to result in mutations and/or rearrangements. Therefore, OriGene does not guarantee the capability to replicate this plasmid DNA. Additional amounts of DNA can be purchased from OriGene with batch-specific, full-sequence verification at a reduced cost. Please contact our customer care team at custsupport@origene.com or by calling 301.340.3188 option 3 for pricing and delivery.

The molecular sequence of this clone aligns with the gene accession number as a point of reference only. However, individual transcript sequences of the same gene can differ through naturally occurring variations (e.g. polymorphisms), each with its own valid existence. This clone is substantially in agreement with the reference, but a complete review of all prevailing variants is recommended prior to use. [More info](#)

OTI Annotation: This clone was engineered to express the complete ORF with an expression tag. Expression varies depending on the nature of the gene.

Components: The ORF clone is ion-exchange column purified and shipped in a 2D barcoded Matrix tube containing 10ug of transfection-ready, dried plasmid DNA (reconstitute with 100 ul of water).

Reconstitution Method:

1. Centrifuge at 5,000xg for 5min.
2. Carefully open the tube and add 100ul of sterile water to dissolve the DNA.
3. Close the tube and incubate for 10 minutes at room temperature.
4. Briefly vortex the tube and then do a quick spin (less than 5000xg) to concentrate the liquid at the bottom.
5. Store the suspended plasmid at -20°C. The DNA is stable for at least one year from date of shipping when stored at -20°C.

Note: Plasmids are not sterile. For experiments where strict sterility is required, filtration with 0.22um filter is required.

RefSeq: [NM_001163145.2](#)

RefSeq Size: 5921 bp

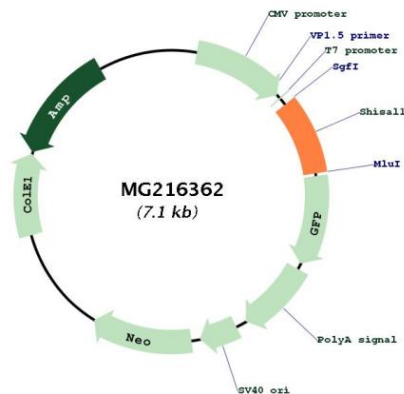
RefSeq ORF: 600 bp

Locus ID: 72301

UniProt ID: [Q0VBP7](#)

Cytogenetics: 15 E2

Product images:



Circular map for MG216362