

Product datasheet for **MG216358**

Adgrg5 (NM_001033468) Mouse Tagged ORF Clone

Product data:

Product Type:	Expression Plasmids
Tag:	TurboGFP
Symbol:	Adgrg5
Synonyms:	Gm1109; Gpr114; PGR27
Mammalian Cell Selection:	Neomycin
Vector:	pCMV6-AC-GFP (PS100010)
E. coli Selection:	Ampicillin (100 ug/mL)



ORF Nucleotide Sequence: >MG216358 representing NM_001033468
 Red=Cloning site Blue=ORF Green=Tags(s)

TTTTGTAATACGACTCACTATAGGGCGCCGGGAATTCGTGACTGGATCCGGTACCGAGGAGATCTGCC
 GCCGCGATCGCC

ATGGATCCACAGGCGCCCTTTCTTCTACCTGTGCCTTCTGGCTGCTCAAGTTGCCTAGTAGAAACCC
 TGTCAGACCTACTTGTCTTGTGAAGCGCCTTGAGCAGCCCGTAGGCCGGGGCTTGTCTCCAGAGCGAG
 GCATATCCACAGCCTGGAGCAGAAGCTGCTCAATGCCAGCTTCGGCGGGCACAACCTTGACCTTGACAGACA
 AACTCCATCCAGTCTCTTGTCTTCAAGTGTGAGCTGCGACTTTCCTGGTCTTTCCTGTCCAGCACCACAC
 TGACAAATGTCTCCAGGTGCGAGCCCCACATGCCATGCAATCCCTGCTGAGCTGACCAAGGGTGCCTG
 TGTGACCTCCCGGCTGCTGAGCTTCGACTCATCTGCATCTATTTCTTCACTGCACACCTCTTTCAGGAT
 GACCGAACTCATCACTGCTCAATAACTATGCTCCTGGGGGCCAGCTGGATCACAGGCCTGTGAACAACC
 TTCAGAAGCCAGTCAACATCAGCTTCTGGCATAATCGGAGTCTGGAAGGGTATACAGTATCCTGTGTTTT
 CTGGAAGGAGGAGCCAGCAAGAGCAGCTGGGGGCCGGAGCCCTGAGGGCTGTTATACAGAGCAGCCC
 TCAGCCACCAGGTTCTCTGCCATTGCAACCATCTCACCTACTTCGCTGTGCTTATGCAAGCTCTCTGGAG
 ACCCCGTGCCCGCTGAGCTGCAGGTGCCTCTTGTGAGTACATCTCTTTGTGGGTTGCAGCATCTCCATCGT
 GGCTCGTGCTCACCACTACTGCTGTACGCTCAGTCCAGGAAGCAAAGCGATTCCACCACACGTATCCAC
 ATGAACCTGAATGGCTCTGTTCTGCTCCTGAACGTACCTTCTTCTGAGCTCCCAGATGACCTGCCCA
 CCATGCCAGGCCGCTGCAAGGTGCTGGCTGCTGTCTACACTACGCACTGCTCAGCAGCCTTACCTG
 GATGGCCATCGAAGGCTTCAACCTCTACCTTTTCTGGGGCGTGTCTACAACGCCTACATTCCGCCGATAC
 TTGCTCAAGCTCTGCATGCTGGGCTGGGGTTTCCAGCCCTCTGGTGTGCTGCTTCTGATGATCAAGA
 GCTCAGTGTATGGACCTGTGTGACCTCACTCTCCAAAAGCCAGGAAAATGGCACAGGCTTCCAGAATGT
 GTCCATGTGCTGGATCCGAAGTCCCATGGTACACAGCATCCTGGTATGGGCTATGGTGGCTTACATCT
 CTGTTCAACCTGGTGGTGTGGCTGGGCTCTGTGGATCTTGTGCAGGCTTCGGGCACGGGAGAAGGCAC
 TGAGTCCCTGGGCTACCGGGACACTGCCATGGTGTGGTCTCACTGTGCTGCTTGGCACCACCTGGAC
 CCTAGCCTTCTTCTCCTCGGTGTGTTCTGCTGCCTCAGCTTCTCTTACCATCTTCAACTCGCTC
 TATGGTTTCTTCTTCTCTGTGGTCTGCTCACAGAAGCGTTACTCGGATGCCGAAGCCAAGGCAGAGA
 TGGAGGCACTCAGCTCCTCCAGATGACACAC

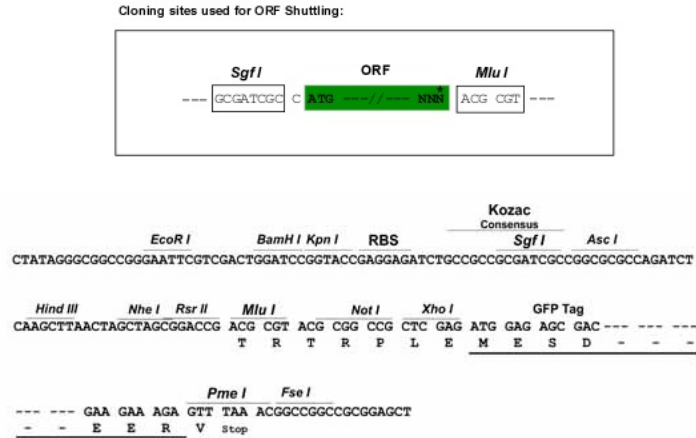
ACGCGTACGCGGCCGCTCGAG - GFP Tag - GTTAA

Protein Sequence: >MG216358 representing NM_001033468
 Red=Cloning site Green=Tags(s)

MDPHGALFFYLCLLAAQVVLVETLSDLLVLMKRLEQPVGRGLSSRARHIHSLEQKLLNASFGGHNLTLQT
 NSIQSLVFKLSCDFPGLSLSSTLTNVSQVRAPHAMQFPAELTKGACVTSRPAELRLICIYFFTAHLFQD
 DRNSSLLNYYVLAGQLDHRPVNQLKPVNISFWHNRSLLEGYTVSCVFWKEGASKSSWGAWSPEGCYTEQP
 SATQVLCHCNHLYFAVLMQLSGDPVPAELQVPLEYISFVGCSISIVASLLTILLYAQSRKQSDSTTRIH
 MNLNGSVLLLNVTFLLSSQMTLPTMPRPVCKVLA AVLHYALLSSLTWMATIEGFNLYLFLGRVYNAYIRRY
 LLKLCMLGWGFPALLVLLLLMIKSSVYGPCVTSLSKSEQENGTGFQNVSMCWIRSPMVHSLVMGYGGFTS
 LFNLVVLAWALWILCRLRAREKALSPWAYRDTAMVGLTVLLGTTWTLAFFFSGVFLLPQLFLFTIFNSL
 YGFFLFLWFCQKRYSDAEAKAEMEAVSSSQMTH

TRTRPLE - GFP Tag - V

Restriction Sites: SgfI-MluI

Cloning Scheme:


ACCN: NM_001033468

ORF Size: 1572 bp

OTI Disclaimer: The molecular sequence of this clone aligns with the gene accession number as a point of reference only. However, individual transcript sequences of the same gene can differ through naturally occurring variations (e.g. polymorphisms), each with its own valid existence. This clone is substantially in agreement with the reference, but a complete review of all prevailing variants is recommended prior to use. [More info](#)

OTI Annotation: This clone was engineered to express the complete ORF with an expression tag. Expression varies depending on the nature of the gene.

Components: The ORF clone is ion-exchange column purified and shipped in a 2D barcoded Matrix tube containing 10ug of transfection-ready, dried plasmid DNA (reconstitute with 100 ul of water).

Reconstitution Method:

1. Centrifuge at 5,000xg for 5min.
2. Carefully open the tube and add 100ul of sterile water to dissolve the DNA.
3. Close the tube and incubate for 10 minutes at room temperature.
4. Briefly vortex the tube and then do a quick spin (less than 5000xg) to concentrate the liquid at the bottom.
5. Store the suspended plasmid at -20°C. The DNA is stable for at least one year from date of shipping when stored at -20°C.

Note: Plasmids are not sterile. For experiments where strict sterility is required, filtration with 0.22um filter is required.

RefSeq: [NM_001033468.3](#), [NP_001028640.2](#)

RefSeq Size: 2812 bp

RefSeq ORF: 1572 bp

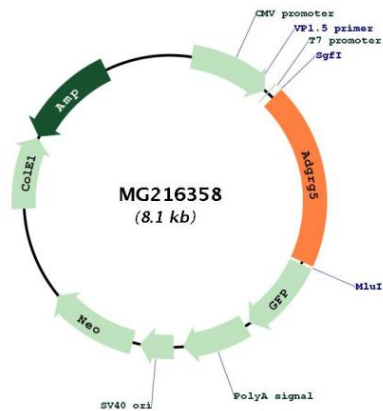
Locus ID: 382045

UniProt ID: [Q3V3Z3](#)

Cytogenetics: 8 C5

Gene Summary: Adhesion G protein-coupled receptor (GPCR). Transduces intracellular signals through coupling to guanine nucleotide-binding protein G(s) subunit alpha and activation of adenylate cyclase pathway (PubMed:22575658). Isoform 1, but not isoform 2, is constitutively active, as evidenced by elevated basal cAMP levels, and responds to mechanical activation (shaking) (PubMed:26499266).[UniProtKB/Swiss-Prot Function]

Product images:



Circular map for MG216358