

Product datasheet for **MG216353**

Sptbn1 (NM_175836) Mouse Tagged ORF Clone

Product data:

Product Type:	Expression Plasmids
Product Name:	Sptbn1 (NM_175836) Mouse Tagged ORF Clone
Tag:	TurboGFP
Symbol:	Sptbn1
Synonyms:	9930031C03Rik; AL033301; elf1; elf3; mKIAA4049; Spnb-2; Spnb2; SPTB2
Mammalian Cell Selection:	Neomycin
Vector:	pCMV6-AC-GFP (PS100010)
E. coli Selection:	Ampicillin (100 ug/mL)
ORF Nucleotide Sequence:	>MG216353 representing NM_175836 Red=Cloning site Blue=ORF Green=Tags(s)

TTTTGTAATACGACTCACTATAGGGCGGCCGGAATTCGTCGACTGGATCCGGTACCGAGGAGATCTGCC
GCC**CGATCGCC**

ATGACGACCACGGTAGCCACAGACTATGACAACATTGAGATCCAGCAGCAGTACAGTGATGTGAACAACC
GCTGGGATGTGGATGACTGGGACAATGAGAACAGCTCTGCAAGGCTCTTTGAGCGCTCCCGCATCAAGGC
CCTGGCAGATGAGCGTGAAGCTGTACAGAAGAAGACCTTACCAAGTGGGCAATTCCCACCTTGGCAGA
GTGTCCTGCCGAATCACAGACCTGTACACGGACCTTCGAGATGGACGGATGCTCATCAAGCTACTGGAGG
TCCTCTCTGGAGAGAGGCTGCCTAAACCCACTAAGGGACGGATGCGGATCCACTGTCTGGAGAATGTCGA
CAAGGCTCTTCAATTCCTGAAAGAGCAGAGAGTCCATCTTGAGAACATGGGCTCCCATGACATTGTGGAT
GGAAACCACCGGCTGACCTCGGCCTCATCTGGACAATTATTCTGCGCTTCCAGATCCAGGATATTAGTG
TGGAGACTGAAGATAACAAAGAGAAAAAGTCTGCTAAGGATGCATTGCTGCTGTGGTGCCAGATGAAGAC
AGCTGGGTACCCCAATGTCAACATTCACAATTTACCAGTACTGGAGGGATGGCATGGCCTTCAATGCA
CTGATACATAAACATCGGCCTGACCTGATAGATTTTGATAAACTGAAGAAATCTAATGCACACTACAATC
TGCAGAATGCATTTAACCTGGCAGAGCAGCACCTTGGCCTCACTAACTGTTAGACCCTGAAGATATCAG
TGTGGACCACCCTGATGAGAAGTCTATCATCACATACGTGGTGACTTACTACCCTACTTCTCCAAGATG
AAGGCCTTGGCTGTGCAAGGAAAGCGCATTGGAAGGTGCTTGATAATGCTATAGAAACAGAGAAAATGA
TTGAGAAGTACGAGTCACTTGTCTGACCTTCTGGAGTGGATTGAACAACCATCATCCTAAACAA
CCGCAAAATTTGCTAATTCAGTGTGGGGTCCAGCAGCAGCTCCAGGCATTCAACACGTACCGCACAGTG
GAGAAACCACCTAAGTTTACTGAGAAGGGGAATTTGGAGGTGCTCCTTTTACAATTCAGAGCAAGATGC
GAGCGAATAATCAGAAGGTCTACATGCCCGCGAGGGGAAGCTCATCTCTGACATCAACAAGGCCTGGGA
AAGACTGGAAAAAGCAGAACATGAGAGAGAACTGGCTCTGCGGAATGAGCTCATAACGGCAGGAAAACTG
GAACAACCTCGCCGAAGATTTGATCGCAAGGCAGCTATGAGGGAGACATGGCTGAGTGAAAACAGCGTC
TTGTGTCTCAGGACAACCTTGGATTTGACCTTCCCGCTGTTGAGGCTGCTACCAAAAAACAGGAGCCAT
TGAGACAGACATCGCTGCATATGAAGAACGAGTTCAGGCCGTGGTGGCTGTGGCCAGGGAACCTGAAGCC



[View online >](#)

GAGAACTACCATGACATCAAGCGCATCACAGCGAGGAAGGACAATGTCATCCGGCTCTGGGAATACTTGC
TGGAACTGCTCAGGGCCAGGAGGACGCGTCTTGAGATGAACCTGGGATTGCAAAAAGATATCCAGGAAAT
GCTTTATATTATGGACTGGATGGATGAAATGAAGGTGCTATTGCTGTCTCAAGACTATGGCAAACACTTA
CTTGGTGTGAAGACCTGTTACAGAAGCATGCCCTGGTTGAAGCAGACATTGCAATCCAAGCAGAGCGTG
TAAGAGGTGTGAATGCCTCTGCCAGAAGTTTGAACAGATGGGAAGGCTACAAGCCATGTGACCCCA
GGTAATTCGAGACCGTGTGCCACATGGAGTTCTGCTATCAAGAGCTTTGTGAGCTGGCTGCCGAGCGT
AGGGCTCGCTGGAAGAGTCCCCTCGCTGGAAGTTCTTCTGGGAGATGGCAGAAAGGAAAGGCTGGA
TACGAGAGAAGGAGAAGATCCTGTCTGATGATTACGGGAAAGACTTGACCAGTGTGATGCGCCTGCT
GAGCAAGCACCGGCATTTGAGGATGAGATGAGTGGCCGTAGTGGCCATTTTGGAGCAGGCCATTAAGAA
GGTGAAGACATGATTGCAGAGGAACACTTTGGATCGGAAAAGATCCGTGAGAGAATCATTATATCCGGG
AGCAGTGGGCCAACCTGGAACAGCTCTCAGCCATTAGGAAGAAGCGCCTAGAGGAAGCCTCATTACTGCA
CCAGTTCAGGCTGATGCTGATGATATTGATGCTTGGATGTTAGATATACTCAAGATTGTCTCCAGCAAT
GATGTGGCCATGATGAGTACTCCACGCGTCTCTGGTCAAGAAGCATAAAGATGTAGCAGAAGAGATCA
CCAACACTACAGGCCACTATTGACACACTGCATGAGCAAGCCAGTCCCTTCCACAAGCACATGCAGAGTC
TCCAGATGTGAAGGGCCGCTGCGCAGGAATTGAGGAGCGCTGCAAGGAGATGGCAGAGTTAACACGGCTA
AGGAAGCAGGCTCTGAGGACACCTGGCCGTACAAGATGTTCAAGTGGGCTGATGCCTGTGAGCTCT
GGATTGACGAGAAGGAGCAGTGGCTCAACAACATGCAGATCCCAGAGAAGCTGGAGGACCTGGAAGTCAT
CCAGCACAGATTTGAGAGCCTAGAACCAGAAATGAACAACCAGGCTTCCCGGGTGTGTGGTGAACCGAG
ATTGCACGGCAGCTGATGCACAATGGCCACCCAGTGAAGGAAATCAGAGCTCAGCAAGACAACTCA
ACACGAGGTGGAGTCACTCAGAGAAGTGGTGGACAGGAAAAGGATGCTCTTGTCTGCCCTGAGCAT
CCAGAACTACCACCTCGAGTGAATGAAACCAATCCTGGATCCGGGAGAAGACCAAGGTGATCGAGTCT
ACCCAAGACCTTGGCAATGACCTGGCAGGTGCTATGGCCCTGCAGCGAAGCTGACTGGCATGGAACGAG
ACTTGGTAGCCATTGAGGCGAAGCTGAGTGCACCTGCAGAAAGAAGCTGAGAAGCTGGAGTCCGAGACCC
TGACCAGGCTCAAGCTATCCTGTCTCGGCTGGCCGAGATCAGTGTGTGGGAGGAAATGAAGCAACC
CTGAAGAACCAGAGGCTCCCTGGGAGAGGCCAGCAAGCTGCAGCAGTTTCTGCGGGACTTGGACGACT
TCCAGTCTTGGCTCTCCAGGACCCAGACTGCTATCGCCTCAGAGGACATGCCCAATACCCTCACTGAGGC
AGAGAAGCTTCTCACACAGCAGGAGAATATCAAAAATGAGATCGACAATTATGAGGAAGACTACCAGAAG
ATGCGGGACATGGGCGAGATGGTCAACCCAGGGCAGACTGATGCCAGTATATGTTTCTGCGGCAGCGGC
TGCAGGCCTTAGACACTGGCTGGAATGAGCTCCACAAAATGTGGGAGAACAGGCAAAACCTCTCCCA
GTCCCATGCTACCAGCAGTTCCTTAGGGACCCAAAACAGCTGAAGCTTTTCTTAATAACCAGGAGTAT
GTTTTGGCTCATACTGAAATGCCACCACCTGGAAGGAGCTGAAGCAGCCATTAAGGAGCAGGAGGACT
TCATGACCACCATGGATGCCAACGAGGAGAAGATCAATGCTGTTGTGGAGACTGGCCGAAGACTGGTGAG
CGATGGGAACATCAACTCCGACCGCATCCAGGAGAAGGTGGACTCTATTGACGACAGACAGGAAGAAT
CGAGAAGCAGCCAGTGAACCTTCTGATGAGGTTAAAGGACAACCGTATCTACAGAAGTTCCTGCAAGATT
GTCAAGAGCTGTCCCTCTGGATCAATGAAAAGATGCTTACAGCTCAAGACATGTCTTATGATGAAGCCAG
AAATCTGCACAGTAAATGGTTAAAGCATCAAGCATTTATGGCGGAACTTGATCCAACAAAGAATGGCTT
GACAAAATTGAGAAGGAAGGAATGCAGCTTATTTAGAAAAGCCAGAAACAGAAGCTGTGGTAAAGGAAA
AACTCACTGGTTTACATAAAATGTGGGAAGTCTTGAATCCACAACCCAGACCAAGGCCAGCGGCTCTT
TGATGCAAATAAGGCTGAGCTTTTACACAAAAGCTGCGCAGATCTTGACAAATGGCTACATGGCCGGAG
AGCCAGATTCATCTGACGACTATGGCAAAGACCTTACCAGTGTCAATATTCTTCTGAAAAAGCAACAGA
TGCTGGAGAATCAGATGGAAGTTCGGAAGAAAGAGATCGAGGAACCTGCAGAGCCAAGCCAGGCGTGAG
TCAGGAGGGGAAGAGCACAGATGAGGTGGACAGCAACGCCTTACTGTGCAGACCAAGTTCATGGAGCTT
CTGGAGCCCTTGAAGTGAAGGAGGAGGATGAGGTTGAGCTTCAAGGAGATCCATCAGTTCACAGGGATG
TGGAGGACGAAATCCTATGGGTTGGCAGAGGATGCCTTTGGCAACTCCACAGATCATGGCCATAACCT
TCAAACCTGTGAGCTGTTAATAAAGAAAAACCAGACCTCCAGAAAGAAATCCAGGGACACCAGCCTCGT
ATTGATGACATCTTTGAGAGGAGTCAAAACATCATCACAGATAGCAGCAGCTCAATGCCGAGGCTATCA
GGCAGAGGCTCGCTGACCTGAAGCAGCTGTGGGGCTCCTCATTGAGGAACTGAGAAACGCCATAGACG
GCTGGAGGAGGCACAAAGGCGCAGCAGTACTACTTTGATGCAGCTGAAGCCGAGGCATGGATGAGTGAA
CAGGAGTTGTACATGATGTCTGAGGAAAAGGCCAAGGATGAGCAGAGTGTCTCTATGTTGAAAAAGC
ACCAGATTTTAGAGCAAGCTGTTGAGGACTATGCAGAGACAGTACACCAGCTCTCCAAGACTAGCCGGGC
GCTGGTGGCTGACAGCCATCCCAGAAAGTGAAGCTATTAGCATGCGGCAGTCAAAGGTCGACAAGCTGAT
GCTGGCCTGAAGGACCTTGTGAGGAGAGGAGAGGAAAACCTGATGAGAGGCACAGGCTGTTCCAGCTCA

ACAGAGAGGTGGATGACCTGGAACAGTGGATCGCTGAGAGGGAAGTGGTCGCAGGCTCCCATGAGTTGGG
ACAGGACTATGAGCATGTCACGATGTTACAAGAACGGTCCGAGAATTTGCTCGAGACACAGGAAACATT
GGGCAGGAGCGTGTGGATACAGTTAATAACATGGCAGATGAACTCATCAACTCTGGACATTCAGATGCTG
CCACCATTGCTGAGTGGAAAGATGGTCTCAATGAAGCCTGGGCTGACCTCCTGGAGCTCATTGACACAAG
AACACAGATTCTGCTGCCTCATATGAACCTTATAAGTTTTACCATGATGCCAAGGAGATCTTTGGCCGA
ATCCAGGACAAACACAAGAACTCCCTGAGGAGCTTGAAGAGATCAAAACACTGTGAAACTTTACAGA
GAATGCACACCACCTTTGAGCACGACATCCAAGCTCTGGGCACTCAGGTGAGGCAGCTGCAGGAGGATGC
AGCTCGCCTCCAGGCAGCCTATGCAGGGGACAAGGCTGATGACATCCAGAAGCGTGAGAATGAGGTCCTG
GAAGCCTGGAAGTCCCTGCTGGATGCTTGTGAGGGTCGCAGGTCGCGCTGGTAGACACAGGAGACAAGT
TCCGCTTCTTCAGCATGGTGCCTGACCTCATGCTGGATGGAAGATGTCATCCGGCAGATCGAGGCCCA
GGAGAAACCACGGGATGTGTCATCTGTTGAACTGTTAATGAATAATCATCAAGGTATCAAAGCTGAAATT
GATGCTCGTAATGACAGCTTTACAGCCTGCATTGAGCTTGGGAAATCCCTGCTGGCACGGAAACACTATG
CTTCTGAGGAGATCAAGGAAAAGTTACTGCAGCTGACAGAGAAAAGAAAAGAAATGATTGACAAGTGGGA
AGACCGGTGGGAGTGGTTAAGACTGATTTTGGAGGTCCATCAGTTCTCAAGGGATGCCAGTGTGGCAGAG
GCTTGGCTGCTTGGACAGGAACCATAACCTATCCAGCCGTGAAATTTGGCCAGAGTGTAGACGAAGTGGAGA
AGCTTATTAAGCGCCATGAGGCGTTTGAAGTCTGCAGCGACCTGGGATGAGAGATTCTCTGCTCTGGA
AAGGCTGACAACGTTGGAGCTACTGGAAGTGCAGCAGACAGCAAGAGGAAGAAAGAAAGAGGGCGCCA
CCTTCTCCGACCCAAACACGAAGGTTTTCAGAGGAGGCTGAGTCCAGCAATGGGATACTTCAAAGGAG
ACCAAGTTTCCAGAAATGGTTTCCGGCTGAGCAGGATCTCCACGGATGGCAGGAACCATGGAACAGAG
TGAAATGGTCAACGGTGTCTGAGCAGAGGACAAGCTCCAAAGAGTCCAGTCTGTTCCCTCTCCCACC
TTGGACCGAAAGGCCAAATCTGCACTTCCAGCCAGAGTGTGCCACCCTGCCAGCCAGGACCCTGGAGA
CACCCGCTGCCAGATGGAAGGCTTCTCAATCGGAAGCATGAGTGGGAGGCCACAATAAGAAAGCCTC
GAGCAGGTCCTGGCACAATGTATATTGTGTCATAAATAACCAAGAAATGGGCTTCTATAAAGATGCCAAG
AGTGCTGCTTCTGGCATCCCCTACCACAGTGAGTCCCTGTGAGTTTGAAGAGGCCATCTGCGAAGTGG
CCCTTGATTACAAAAAGAAGAAGCAGTGTCAAGCTAAGACTAAGTATGGAACGAGTACCTCTTCCA
AGCCAAAGATGATGAGGAAATGAACACATGGATCCAGGCTATCTCCTCTGCCATCTCCTCTGACAAACAC
GACACATCTGCCAGCACCAGAGTACGCCAGCATCCAGTCGGGCGCAGACCTTACCCACCAGCGTCGTCA
CCATCACCAGCGAGTCCAGTCTGGCAAGAGGGAGAAGGATAAAGAGAAAGACAAAGAGAAGAGGTTTCAG
CCTTTTCGGCAAGAAGAAG

ACGCGTACGCGGCCGCTCGAG - GFP Tag - GTTTAA

Protein Sequence: >MG216353 representing NM_175836
 Red=Cloning site Green=Tags(s)

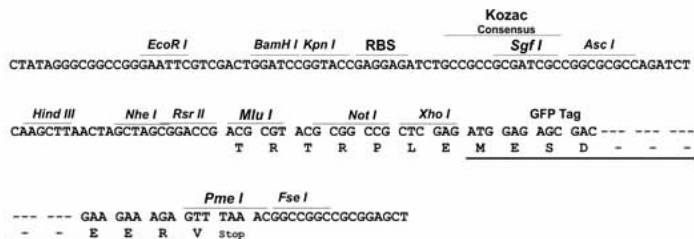
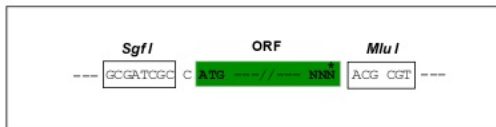
MTTAVATDYDNIEIQQYSDVNNRWDVDDWENSSARLFERSRIKALADEREAVQKKTFTKVVNSHLAR
 VSCRITDLYTDLRDGRMLIKLLEVL SGERLPKPTKGRMRIHCL ENVDKALQFLKEQRVHLENMGSHDIVD
 GNHRLTLGLIWTIILRFQIQDISVETEDNKEKKSADALLWCQMKTAGYPNVNIHNFSTSWRDGMAFNA
 LIHKHRPDLIDFDKLLKSNAHYNLQNAFNLAEQHLGLTKLLDPEDISVDHPDEKSIITYVVTYYHYFSKM
 KALAVEGKRIGKVLDNAIETEKMIKEYESLASDLEWIEQTIIILNNRKFANSLVGVQQQLQAFNTYRTV
 EKPPKFTTEKGNLEVLFTIQSKMRANNQKYYMPREGKLSIDINKAWERLEKAEHERELALRNELIRQEKL
 EQLARRFRDRAAMRETWLSNQRLVSDNFQFDLPAVEAATKKHEAIETDIAAYEERVQAVVAVARELEA
 ENYHDIKRITARKDNVIRLWEYLLELLRARRQRLMNLGLQKIFQEMLYIMDWMDEMVKVLLSQDYGKHL
 LGVEDLLQKHALVEADIAIQAERVGVNASAQKFATDGEQYKPCDPQVIRDRVAHMEFCYQELCQLAAER
 RARLEESRRLWKFWEAAEEGWIREKEKILSSDDYGKDLTSVMRLLSKHRAFEDEMSGRSGHFQAIKE
 GEDMIAEEHFGEKIRERIIYIREQWANLEQLSAIRKKRLEEASLLHQFQADADDIDAWMLDILKIVSSN
 DVGHDEYSTQSLVKKHKDVAEEITNYRPTIDTLHEQASALPQAHAESPDVKGRLAGIEERCKEMAELTRL
 RKQALQDTLALYKMFSEADACELWIDEKEQWLNMQIPEKLEDLEVIQHRFESLEPEMNNQASRVAVVNVQ
 IARQLMHNGHPSEKEIRAQQDKLNTRWSQFRELVDKRDALLSALSIQNYHLECNETKSWIREKTKVIES
 TQDLGNDLAGVMALQRKLTGMRDLVAIEAKLSDLQKEAEKLESEHPDQAQAILSRLAEISDVWEEMKTT
 LKNREASLGEASKLQQFLRDLDDFQSWLSRTQTAIASEDMPNTL TEAEKLLTQHENIKNEIDNYEEDYQK
 MRDMGEMVTQGGTDAQYMF LRQLQALDTGWNELHKMWRNRQNLQS SHAYQQFLRDTKQAEAFNNQEY
 VLAHTEMPTTLEGAAEAIKKQEDFMTMDANEKINAVVETGRRLVSDGNINSDRIQEKVDSIDDRHRKN
 REAASELLMRLKDNRLQKFLQDCQELSLWINEKMLTAQDMSYDEARNLHSLKWLKHQAFMAELASNKEWL
 DKIEKEGMQLISEKPETEAVVKEKLTGLHKMWEVLESTTQTKAQRLLFDANKAELFTQSCADLKWHLGLE
 SQIQSDDYGKDLTSVNILLKKQQMLENQMEVRKKEIEELQSQAQALSQEGKSTDEVDSKRLTVQTKFMEL
 LEPLSERKHNL LASKEIHQFNRDVEDEILWVGERMPLATSTDHGHNLQTVQLLIKKNQTLQKEIQGHQPR
 IDDIFFERSQNIITDSSSLNAEAIQRQLADLKQLWGLLIEETEKRRHRLLEEAKQAQYYFDAEAEAWMSE
 QELYMMSEKAKDEQSAVSMLKKHQILEQAVEDYAETVHQLSKTSRALVADSHPESEIRSMRQSKVDKLY
 AGLKDLAEERRGKLDERHRLFQLNREVDLEQWIAEREVVAGSHELGDQYEHVMTLQERFREFARDTGNI
 GQERVDTVNNMADEL INSGHSDAATIAEWKDGLEAWADLLELIDTRTQILAASYELHKFYHDAKEIFGR
 IQDKHKKLPEELGRDQNTVETLQRMHTTFEHDIQALGTQVRQLQEDAARLQAAYAGDKADDIQKRENEVL
 EAWKSLLDACEGRRVRLVDTGDKFRFFSMVRDLMLWMEDVIRQIEAQEKPRDVSSVELLMNNHQGIKAEI
 DARNSFTACIELGKSL LARKHYASEEIKEKLLQLTEKRKEMIDKWEDRWELRLILEVHQFSRDASVAE
 AWLLGQEPYLLSSREIGQSVDEVEKLIKRHAEFEKSAATWDERFSALERLTLELLEVRRQEQEEERKRRP
 PSPDPNTKVSEEAESQWDTSKGDQVSQNLPAEQGSPRMAGTMETSEMVNGAAEQRTSSKESPPVPSPT
 LDRKAKSALPAQSAATLPARTLETPAAQMEGFLNRKHEWEAHNKKASSRSHNVYCVINNQMGMFYKDAK
 SAASGIPYHSEVPVSLKEAICEVALDYKKKKHVFKLRLSDGNEYLFQAKDDEEMNTWIQAISSAISSDKH
 DTSASTQSTPASSRAQTLPTSVVTITSESSPGKREKDKKDKKRFSLFGKKK

TRTRPLE - GFP Tag - V

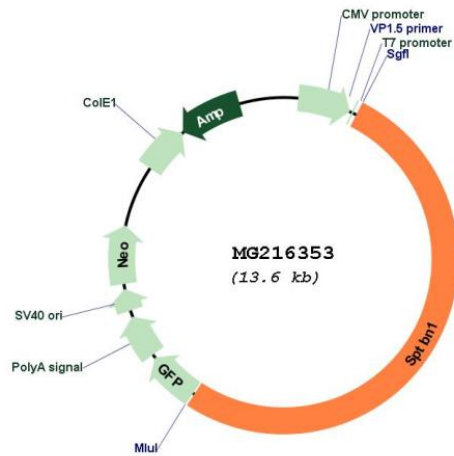
Restriction Sites: Sgfl-MluI

Cloning Scheme:

Cloning sites used for ORF Shutting:



Plasmid Map:



ACCN: NM_175836

ORF Size: 7089 bp

OTI Disclaimer: The molecular sequence of this clone aligns with the gene accession number as a point of reference only. However, individual transcript sequences of the same gene can differ through naturally occurring variations (e.g. polymorphisms), each with its own valid existence. This clone is substantially in agreement with the reference, but a complete review of all prevailing variants is recommended prior to use. [More info](#)

OTI Annotation: This clone was engineered to express the complete ORF with an expression tag. Expression varies depending on the nature of the gene.

Components: The ORF clone is ion-exchange column purified and shipped in a 2D barcoded Matrix tube containing 10ug of transfection-ready, dried plasmid DNA (reconstitute with 100 ul of water).

Reconstitution Method:

1. Centrifuge at 5,000xg for 5min.
2. Carefully open the tube and add 100ul of sterile water to dissolve the DNA.
3. Close the tube and incubate for 10 minutes at room temperature.
4. Briefly vortex the tube and then do a quick spin (less than 5000xg) to concentrate the liquid at the bottom.
5. Store the suspended plasmid at -20°C. The DNA is stable for at least one year from date of shipping when stored at -20°C.

RefSeq: [NM_175836.2](#), [NP_787030.2](#)

RefSeq Size: 8265 bp

RefSeq ORF: 7092 bp

Locus ID: 20742

UniProt ID: [Q62261](#)

Cytogenetics: 11 17.44 cM

Gene Summary: Fodrin, which seems to be involved in secretion, interacts with calmodulin in a calcium-dependent manner and is thus candidate for the calcium-dependent movement of the cytoskeleton at the membrane.[UniProtKB/Swiss-Prot Function]