

Product datasheet for **MG216345**

Aspscr1 (NM_198223) Mouse Tagged ORF Clone

Product data:

Product Type:	Expression Plasmids
Product Name:	Aspscr1 (NM_198223) Mouse Tagged ORF Clone
Tag:	TurboGFP
Symbol:	Aspscr1
Synonyms:	1190006K01Rik; ASPC; ASPCR1; ASPL; ASPS; RCC17; TUG
Mammalian Cell Selection:	Neomycin
Vector:	pCMV6-AC-GFP (PS100010)
E. coli Selection:	Ampicillin (100 ug/mL)



[View online »](#)

ORF Nucleotide Sequence:

>MG216345 representing NM_198223
 Red=Cloning site Blue=ORF Green=Tags(s)

TTTTGTAATACGACTCACTATAGGGCGGCCGGGAATTCGTCGACTGGATCCGGTACCGAGGAGATCTGCC
 GCC**CGGATCGCC**

ATGGCGGCCCGCGGGCGGGGGCTCCGCGGTGTCCGTGCTGGCCCCAACGGCGGGCCACACGG
 TGAAGGTGACGCCGAGCACCGTCTGCTGCAGGTACTAGAAGACACATGCCGGCGCAAGACTTCAACCC
 CAGTGAATACGACCTGAAGTTTCAGAGGACGGTCTAGACCTCTCTCCAGTGGAGATTTGCCAACCTG
 CCTAACATGCCAAGCTGGAGATGGTGCCTGTGTCCCGTAGCCGCGAGGGGCTGAGAACATAGTTCGCA
 TCGCGTTCCAGCTGGATGACGGCTCCAGGTTGCAGGACGCTTTCTGTTCCCGACAGACTCTCTGGGAGCT
 TCTCAGCCATTTGCACAGACCAGGGAGCGTCTGCAGCAGCTGGGTGAGAAGACCCTGTCTGCGTGTAC
 ATGAGGAATGAGGTGACTGGTAGAGCTGCCTTACAGAACAACCCCTCAGTCACTGGCCCTGACAGGTG
 GTAGTGCCACCATCAGGTTTGCATAAAGCAGTGTGACACCGCCGCAACAGGAGTCCATAGCCGTCAG
 GAGCAAGGCCCGGAAGTCCGGTCTCCTCCTTGTGACCCGACCGGCATCCAGTAGCACATTGCTTCTCT
 CTGAACTCTGGGAGTTCAGCAGGGGAGACCTAAACCATGAGGGTGTGCAAAACCTCAGGACCGGCC
 TTGAGGGTGGCCCCAAACCAACGGATGCTCAAACAAGCAAGCACCAGTGAGCCTGCATCGGCCCCCTT
 CGTTCCCTTCTCTGGGGGGGCCAGCGGCTGGGGGCCCTTCTAAGCCCAAGAAGCCAAAGCCTGGTG
 AGGAGCCCCAGCAGGAGCCTGAACCGCCGTTGACCGAGATCCTGTGGTGTACCACCCTGACCTAGAGGA
 CTTGCTACAGCCCTGGCCGCGAGAGTGCCTGACGAGTCTTTGAGGTGACTGTGGATGATGTGAGGAGA
 CGCTTGGCCAGCTCAAGAGTGAGCGGAAGCGTCTGGAAGAAGCCCCCTGGTGACCAAGGCTTTACGGG
 AGGCTCAGATGAAGGAGAACTGGAACGTTACCCAAAGTGGCTCTGCGGGTCTATTCCCTGACCGCTA
 CATCCTGCAGGGCTTCTCCGCCCCAGTGAGACAGTGGGGGATCTTCGAGACTTTGTTAGGAGCCACCTG
 GGAACCCCGAGCTCTCCTTTTACCTATTCATCGCTCCACCCAAAATGGTCTGGATGACCACACGCTGA
 CTCTCTTTAGGCAAACTCTTCCCTGTGCGCTTGTGCACTTTGGAGCTGAAGAACCAACAGGTCTCTA
 TCTGGAACCTGGGCTGCTAGAACACACCGTCTCCCATCTACAGCTGATGTGCTGGTGGCCAGGTGATG
 TCCCGGGCTTCCGGTCCCACCTCTGCTGCCAGCCCTGACCCTGTATCCCTGGAGTCTGAGCCAATCG
 CTGAGGATGGGCACTGGGGCCCCAGAGCCCATCCAAGGGACAGCCAGCCTGTGAAGAGAAGCCTGGG
 CAAAGTACCAAGTGGCTGAAGCTGCCAGCCAGCAAGAGG

ACGCGTACGCGGCCGCTCGAG – GFP Tag – GTTTAA

Protein Sequence:

>MG216345 representing NM_198223
 Red=Cloning site Green=Tags(s)

MAAPAGGGGSAVSVLAPNGRRHTVKVTPSTVLLQVLEDTCRRQDFNPSEYDLKFQRTVLDLSLQWRFANL
 PNNAKLEMVPSRSREGPENIVRIAFQLDDGSRLQDAFCRQTLWELLSHFAQTRERLQQLGEKTPVCVY
 MRNEVTGRAALQNTTLQSLGLTGGSATIRFVIKQCDTAGKQESI AVRSKAPGSPVSSLADQASSSTLLP
 LNSGEFSRGLNHEGDANTSGLTGGPKPTDAQTKQSTSEPASAPFVPFSGGGQRLGGPSASLRPLTSP
 SANSSKFSGPGGSPKPKPKGPEEPQEQEPEPPVDRDPVYHPDLEDLLQPWPAEVPDEFEVTVDVRR
 RLAQLKSERKRL EEAPLVTKAFREMQKEKLERYPKVALRVLPDRYILQGF FRPSETVGD LRDFV RSHL
 GNP ELSFYLF IAPPKMVLDDHTLTLFQANL FPAALVHFGAE EPTGLYLEPGLLEHTVSPSTADVLVARCM
 SRASGSPPLLPAPDPVSLESEPIAEDGALGPPEIQGTAQPVKRS LGKVPKWLKLPASKR

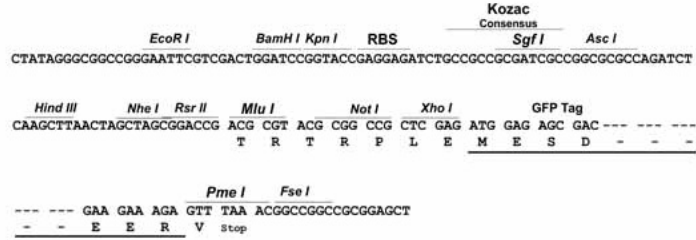
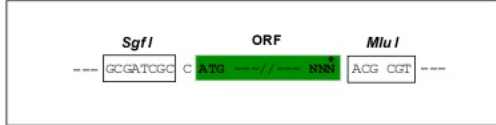
TRTRPLE – GFP Tag – V

Restriction Sites:

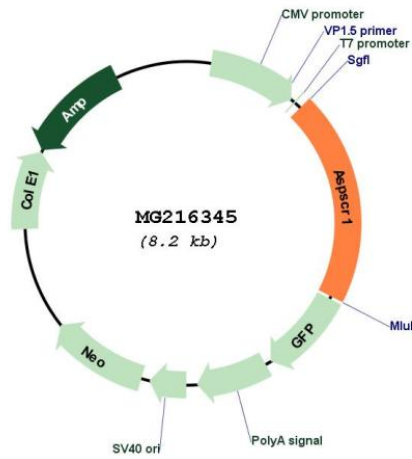
Sgfl-MluI

Cloning Scheme:

Cloning sites used for ORF Shutting:



Plasmid Map:



ACCN:	NM_198223
ORF Size:	1419 bp
OTI Disclaimer:	The molecular sequence of this clone aligns with the gene accession number as a point of reference only. However, individual transcript sequences of the same gene can differ through naturally occurring variations (e.g. polymorphisms), each with its own valid existence. This clone is substantially in agreement with the reference, but a complete review of all prevailing variants is recommended prior to use. More info
OTI Annotation:	This clone was engineered to express the complete ORF with an expression tag. Expression varies depending on the nature of the gene.
Components:	The ORF clone is ion-exchange column purified and shipped in a 2D barcoded Matrix tube containing 10ug of transfection-ready, dried plasmid DNA (reconstitute with 100 ul of water).
Reconstitution Method:	<ol style="list-style-type: none">1. Centrifuge at 5,000xg for 5min.2. Carefully open the tube and add 100ul of sterile water to dissolve the DNA.3. Close the tube and incubate for 10 minutes at room temperature.4. Briefly vortex the tube and then do a quick spin (less than 5000xg) to concentrate the liquid at the bottom.5. Store the suspended plasmid at -20°C. The DNA is stable for at least one year from date of shipping when stored at -20°C.
RefSeq:	NM_198223.2 , NP_937866.1
RefSeq Size:	1651 bp
RefSeq ORF:	1422 bp
Locus ID:	68938
UniProt ID:	Q8VBT9
Cytogenetics:	11 E2
Gene Summary:	Enhances VCP methylation catalyzed by VCPKMT (By similarity). Tethering protein that sequesters GLUT4-containing vesicles in the cytoplasm in the absence of insulin. Modulates the amount of GLUT4 that is available at the cell surface.[UniProtKB/Swiss-Prot Function]