

Product datasheet for **MG216342**

Cfi (NM_007686) Mouse Tagged ORF Clone

Product data:

Product Type:	Expression Plasmids
Product Name:	Cfi (NM_007686) Mouse Tagged ORF Clone
Tag:	TurboGFP
Symbol:	Cfi
Mammalian Cell Selection:	Neomycin
Vector:	pCMV6-AC-GFP (PS100010)
E. coli Selection:	Ampicillin (100 ug/mL)



[View online »](#)

ORF Nucleotide Sequence:

>MG216342 representing NM_007686
 Red=Cloning site Blue=ORF Green=Tags(s)

TTTTGTAATACGACTCACTATAGGGCGGCCGGAATTCGTCGACTGGATCCGGTACCGAGGAGATCTGCC
 GCC**CGGATCGCC**

ATGAAGCTCGCTCATCTCAGTCTCTTTCTCTGGCTCTCCACTTGAGTTCTTCCAGTCCCCGTCAGCAT
 CAGATCTGCCTCAGGAGGAGCTGGTCGATCAGAAATGCTTACTGCAGAAATACACGCATCGCTCCTGTAA
 CAAGGTCTTCTGCCAGCCGTGGCAGAGATGTATCGAAGGCACCTGTATCTGCAAACCTCCCTACCAGTGC
 CCAAGGGCTGGCACCCAGTGTGTGCCATGAATGGAAGGAGCTACCCGACATACTGTACCAGAAGAGTT
 TCGAATGTCTTACCCAGAGATCAAGTTTTACATAATGGAACGTGCGCAGCTGAAGGAAAGTTTAAATGT
 TTCCTTAATTTATGGGAGAACAAAAACAGAGGGACTTGTCAAGTCAAACCTGTGGACCAAGATGAGAGA
 ATGTTTCATATGTAACAGCTGGAGCATGGCGGAGGCCAACGTGGCTGCGTCGACCTTGGATTTCCAC
 TGGGTGTTGTCGACATAACAAGGAAGTTTAAATATCTGGAAATCTCCATATAAACGACACTGAATGCCT
 GCATGTACATTGCCGGGAGTAGAGACCAGTTTGGCGGAGTGTGCCTTTACGAAGAGGAGAACTGAGTTG
 TCCAATGGCTTGGCGGGGTAGTGTGTTACAAGCAGGATGCAGATTTCCAACGAGTCTGTCTTCCAGT
 GTGTGAATGGGAAGCACATTCCTCAGGAGAAAGCCTGCAACGGTGTCAATGACTGTGGAGACCAAGCGA
 TGAGCTGTGTTGCAAAGGTTGCCGAGGTAACGCTTCCCTTTGTAAGTCGGGAGTTTGATTTCCAGACCAA
 TACAAGTGTAAATGGTGAAGTGGACTGCATCACTGGTGAAGATGAGAGCCGTTGTGAAGAAGACCGACAGC
 AGAACATTCAAAAGGCCTTGCACGGTCAGCTCAAGGAGAAGCTGAAATTGAAACTGAAGAAACAGAAAT
 GTTGACTCCTGGTATGGACAATGAAAGAAAACGGATAAAGTCCTTATTACCTAACTCTCCTGTGGAGTC
 AAAAGAAACACTCACACTCGCAGGAAACGAGTGCATCGGAGGGAAGCCAGCGAATGTGGGAGACTACCCAT
 GGCAGTGGCAATTAAGGATGGCCAAAGAATCACCTGTGGTGGCATTATATCGTGGCTTGGATTCT
 GACTGCTGCGCACTGTGTCAGACCCAGTAGAGCTCACAGTTACCAAGTCTGGACGGCTTTATTAGACTGG
 CTAACAACTAACTCTCAGTTGGGAATTCAAACGGTGAAGAGAGTTATTGTTACAGAGAAATATAATGGAG
 CCACCTTCCAAAATGACATAGCTTTGATTGAAATGAAAATGCACACGGGCAAGAAAGAAATGTGAACTCCC
 CAATTCGGTCCCTGCCTGCGTCCCGTGGTCTCCATATCTGTTCCAACCGAATGACAGATGTATCATCTCT
 GGATGGGTCGAGGGAAGATAACCAAAAAGTCTACTCACTCAGGTGGGCGAAGTTGATCTAATAGGCA
 ACTGCTCTCAGTTTTACCAGATCGCTACTATGAGAAAGAGATGCAGTGCAGGACGCGTGTGGGTC
 CATTGATGCCTGCAAAGGAGACTCCGGAGGCCCTTGGTCTGTGAGGATATCAACATGTCACCTACGTT
 TGGGGCATTGTGAGCTGGGAGAAAATTGTGGGAAGCCGAGTCCAGGTGTTACACCAGAGTGGCCA
 ATTATTTGATTGGATTAGCTATCACGTAGGAAGTCTCTGTTTCTCAACACAATGTC

AG**CGGACCG**ACGCGTACGCGGCCGCTCGAG - GFP Tag - GTTTAA

Protein Sequence:

>MG216342 representing NM_007686
 Red=Cloning site Green=Tags(s)

MKLAHL~~SL~~FLLALHLSSSRSPSASDLPQEELVDQKLLQKYTHRSCNKVFCQPWQRCIEGTCICKLPYQC
 PRAGTPVCAMNGRSYPTYCHQKSFELHPEIKF SHNGTCAAEGKFNVSLEYGRKTEGLVQVKLVQDER
 MFICKNSWSMAEANVACVDLGFPLGVRDIQGSFNISGNLHINDTECLHVHCRGVETSLAECAFTKRRTEL
 SNGLAGVVYKQDADFP~~TS~~SFQCVNGKHIPQEKACNGVND~~CGD~~QSD~~EL~~CCKGCRGNASLCKSGVCIPDQ
 YKNGEVD~~CI~~TGEDESRCEEDRQNI~~PK~~LARS~~Q~~GEAEIETEEM~~L~~TPGMDNERKRIKSLPKLSCGV
 KRNTHTRRKRVI~~GG~~KPANVGDYPWQVAIKDGQRITCGGIYIGGCWIL~~TA~~AHCVRPSRAHSYQVW~~T~~ALLDW
 LKPNSQLGIQT~~V~~KRVIVHEKYNGATFQNDIALIEMKMHTGKKECELPNSVPACVPWSPYLFQPNDRCIIS
 GWGRGKDNQKVYSLRWGEVDLIGNCSQFY~~PD~~RYEYKEMQ~~C~~AGTRDGSIDACKGDSGGPLV~~CE~~DINNVTYV
 WGI~~V~~SWG~~EN~~CGKPEFPGVYTRVANYFDWISYHVGRSLV~~S~~QHNV

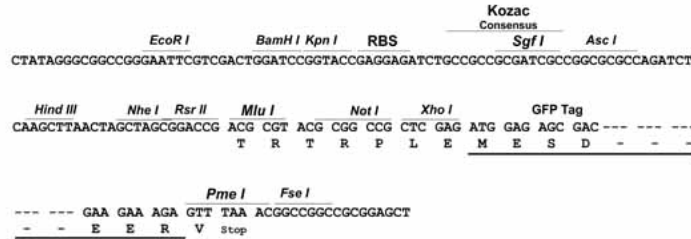
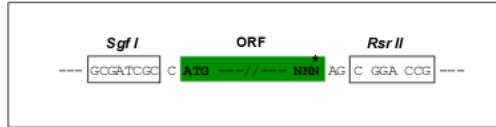
SGP**TR**RRLE - GFP Tag - V

Restriction Sites:

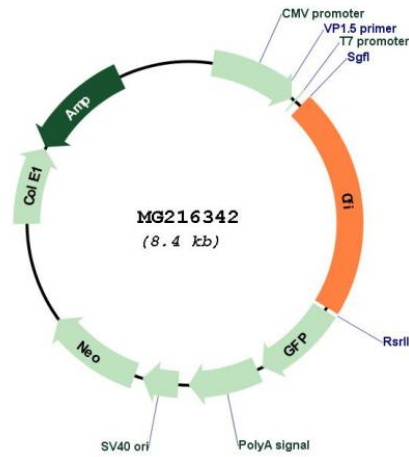
Sgfl-RsrII

Cloning Scheme:

Cloning sites used for ORF Shuttling:



Plasmid Map:



ACCN:

NM_007686

ORF Size:	1809 bp
OTI Disclaimer:	The molecular sequence of this clone aligns with the gene accession number as a point of reference only. However, individual transcript sequences of the same gene can differ through naturally occurring variations (e.g. polymorphisms), each with its own valid existence. This clone is substantially in agreement with the reference, but a complete review of all prevailing variants is recommended prior to use. More info
OTI Annotation:	This clone was engineered to express the complete ORF with an expression tag. Expression varies depending on the nature of the gene.
Components:	The ORF clone is ion-exchange column purified and shipped in a 2D barcoded Matrix tube containing 10ug of transfection-ready, dried plasmid DNA (reconstitute with 100 ul of water).
Reconstitution Method:	<ol style="list-style-type: none">1. Centrifuge at 5,000xg for 5min.2. Carefully open the tube and add 100ul of sterile water to dissolve the DNA.3. Close the tube and incubate for 10 minutes at room temperature.4. Briefly vortex the tube and then do a quick spin (less than 5000xg) to concentrate the liquid at the bottom.5. Store the suspended plasmid at -20°C. The DNA is stable for at least one year from date of shipping when stored at -20°C.
RefSeq:	NM_007686.3 , NP_031712.2
RefSeq Size:	2073 bp
RefSeq ORF:	1812 bp
Locus ID:	12630
UniProt ID:	Q61129
Cytogenetics:	3 59.21 cM
Gene Summary:	This gene encodes a serine protease that plays an important role in the classical and alternative complement pathways where it cleaves C4b and C3b components of C3 and C5 convertases. The encoded preproprotein undergoes proteolytic processing to generate an active, disulfide-linked heterodimeric enzyme comprised of heavy and light chains. [provided by RefSeq, Jul 2016]