

Product datasheet for **MG216335**

Kif3c (NM_008445) Mouse Tagged ORF Clone

Product data:

Product Type:	Expression Plasmids
Tag:	TurboGFP
Symbol:	Kif3c
Synonyms:	mKIAA4058
Mammalian Cell Selection:	Neomycin
Vector:	pCMV6-AC-GFP (PS100010)
E. coli Selection:	Ampicillin (100 ug/mL)



ORF Nucleotide Sequence: >MG216335 representing NM_008445
Red=Cloning site Blue=ORF Green=Tags(s)

TTTTGTAATACGACTCACTATAGGGCGCCGGGAATTCGTGACTGGATCCGGTACCGAGGAGATCTGCC
GCCGCGATCGCC

ATGCCAGTAAACCAAGGCCAGCGAGGCCCTGAAGTGGTGGCCCGTGCCGCCCTCAGTAGGAAGG
AGGAGGCTGCTGGTCATGAGCAGATTCTGACCATGGACGTGAAACTGGGCCAGGTGACTCTGCGAAACCC
CCGCGCGGCACCCGGGGAGCTGCCAAGACCTTCACTTTTGTGCTGTGTATGATGCTAGCTCCAAGCAG
GCCGACCTGTATGACGAAACGGTGAAGGCCCTGATAGACTCAGTGTTCAGGGTTTCAACGGCACCCTAT
TTGCCATGGCCAGACTGGCAAGACCTACACCATGCAGGGGACCTGGTGGAGCCAGAGCTCCG
CGGGGTTATCCCGAATGCCTTTGAGCACATCTTACCACATCTCCCGCTCCAGAAACCAGCAGTACCTG
GTTCTGTCTTCTACTTGGAGATCTACCAGGAGGAGATCCGAGACCTGCTATCCAAGGAGCCAGGCAAGA
GGCTAGAGCTGAAGGAGAATCCTGAAACAGGGGTCTACATCAAGGACCTCTTCTCTTTGTACCAAGAA
TGTCAGGAGATTGAGCATGTGATGAACCTGGGAACCAAGCCGAGCAGTGGCAGCACCCACATGAAT
GAGGTGAGCTCTCGGTCCCATGCCATCTTTGTTATCACAGTGGAGTGCAGTGCAGTGGCTCTGATGGCC
AGGATCATATCCGAGTAGGCAAGCTCAACCTGGTAGACCTGGCCGCGAGTGAGAGACAGAACAAGGCTGG
TCCCAACGCAGCTGGAGGGCCAGCCACACAGCCAACAGCTGGTGGTGGGAGTGGAAAGTGGCAGCGCTAGT
GTTCTGCCAGCAGCGGAGAGGGCCTAAGGAAGCTTCTAAATCAATCTCTCGCTGCCGCCCTGGGCA
ATGTGATTGCTGCTCTGGCTGGCAACAGGAGCACCCACATCCCTACCGGGACTCCAAGCTAACCCGGCT
GCTCCAAGACTCACTGGGGGCAATGCCAAGACCATCATGGTGGCCACACTGGGTCCAGCTTCTCACAGC
TACGACGAGAGCTCTCTACCCTGCGCTTTGCCAACCGAGCCAAGAATCAAGAACAACCCGGGGTGA
ACGAGGACCCCAAGGACACACTGCTGAGGGAATCCAGGAAGAGATCGCTCGCTTGAAGGCCAGCTGGA
GAAGAAGGGGATGCTGGCAAGCGACTCGGAGAAAGAGCAGTCTGAGAAAGAAGGCCGTGTCTGCCCA
GCCGGCTATCCAGAGGGGTCCGTGATTGAGGCCTGGGTGGCCGAAGAGGAAGATGATAACAACAACATC
ACCACCCACCCAGCCCATCTTGGAGGCAGCTTTGGAGAAGAACATGGAGAATTACCTGCAGGACCAGAA
GGAACGGCTGGAGGAGGAGAAGGCTGCCATCCAGGATGACCCGAGCCTTGTGAGTGAAGGAGAAGCAGAAG
CTTCTAGAAGAGAAGGAGAAGATGCTGGAGGATCTACGGCGGGAGCAGCAGGCTACAGAGCTGCTTGCAG
CCAAGTACAAGGCCATGAAAGCAAGCTACTATTGGGGGCGGAACATCATGGATCACACCAACGAGCA
ACAGAAGATGTTGAACTGAAGCGACAGGAGATTGCGGAACAGAAACGCGTGAACGGGAAATGCAGCAG
GAGATGCTGCTCCGCGATGAAGAAACCATGGAGTACGTGGTACCTACTCATCCCTGCAGCAGGAGGTGG
AAGTTAAAACCAAGAACTCAAGAAGCTCTATGCCAAGCTACAGGCGGTGAAGGCCGAGATCCAGGACCA
ACACGAAGAGTACATCCGCTGCGGCAGGACCTGGAGGAGGCGCAGAATGAGCAGACCCGGGAACTAAAG
CTCAAGTACCTCATATTGAGAATTCATCCCCCTGAGGAGAAGAACAAGATCATGAACCCCTTTTCC
TGGACTGTGAGGAGGAGCAGTGGAGTTCCAGCCACTGGTCCAGCTGGAGTGAATAACAGCCAAATGAA
GAAGCGTCCAACCTTCTGCGGTGGGCTACAAGAGACCTATCAGCCAGTATGCTCGGGTTGCCATGGCAATG
GGGTCCCATCCAGATACAGAGCTGAAAATATAATGTTTTTGGAACTGGATGTGTCCCACCCGGTATCT
TTGAGATGGAGTTTTCTCATGACCAAGAGCAAGACCCACGGTACTACACATGGAGAGGCTCATGAGGTT
GGACAGCTTTCTGAAAAGACCGTCCACAATAAAGTGCAGAAAGTCAGATCCTGGTCCAGAGTCTCAG
CGGATGCCTCCACCCTCCAGCTCATGCATCCATGACCTCTGTTCTTTGACCCCTGCAACAGTGGTAG
ACCATGAC

ACGCGTACGCGGCCGCTCGAG - GFP Tag - GTTTAA

Protein Sequence: >MG216335 representing NM_008445
 Red=Cloning site Green=Tags(s)

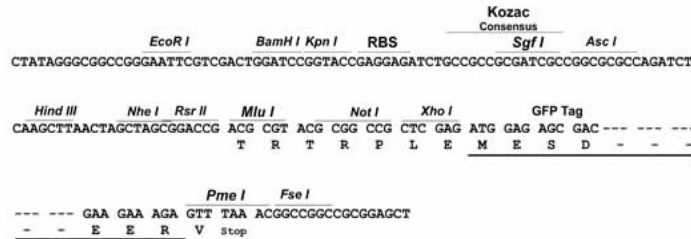
```
MASKTKASEALKVVARCRPLSRKEEAAGHEQILTMDVKLGQVTLRNPRAAPGELPKTFTFDVAVYDASSKQ
ADLYDETVRPLIDSVLQGFNGTVFAYGQTGTGKTYTMQGTWVEPELRGVIPNAFEHIFTHISRSQNQQYL
VRASYLEIYQEEIRDLLSKEPGKRLELKENPETGVYIKDLSFVTKNVKEIEHVMNLGNQARAVGSTHNM
EVSSRSHAI FVITVECSERGS DGDH IRV GKL NLDL A GSERQNKAGPNAAGGPATQPTAGGGSGSGSAS
GSASSGERPKEASKINLSL SALGNVIAALAGNRSTHIPPYRDKL TRLLQDSLGGNAKTIMVATLGPASHS
YDESLSTLRFANRAKNIKNKPRVNDPKDTLLREFQEEIARLKAQLEKKGMLGKRPRRKSRRKKAVSAP
AGYPEGSVIEAWVAEEEDNNNNHPPQP ILEAALEKNMENYLQDQKERLEEEKAAIQDDRSLVSEEKQK
LLEEKEKMLEDLRREQQATELLAAKYKAMESKLLIGGRNIMDHTNEQQKMLELKRQEIAEQKRREREMQQ
EMLLRDEETMELRGTYSSLQQEVEVKTKLKLKLYAKLQAVKAEIQDQHEEYIRVRQDLEEAQNEQTRELK
LKYLIIENFIPPEEKNIMNRLFLDCEEEQWRFQPLVPAGVNNSQMKKRPTSAVGYKRPISQYARVAMAM
GSHPRYRAENIMFLELDVSPPAIFEMEFSHDQEQDPRVLHMERLMRLDSFLERPSTTKVRKSRSWCQSPQ
RMPPPSAHASMTSVPLHPATVVDHD
```

TRTRPLE - GFP Tag - V

Restriction Sites: SgfI-MluI

Cloning Scheme:

Cloning sites used for ORF Shutting:



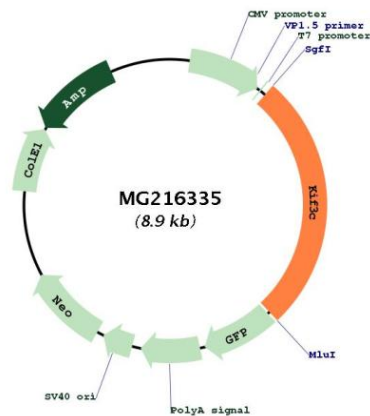
ACCN: NM_008445

ORF Size: 2388 bp

OTI Disclaimer: The molecular sequence of this clone aligns with the gene accession number as a point of reference only. However, individual transcript sequences of the same gene can differ through naturally occurring variations (e.g. polymorphisms), each with its own valid existence. This clone is substantially in agreement with the reference, but a complete review of all prevailing variants is recommended prior to use. [More info](#)

OTI Annotation: This clone was engineered to express the complete ORF with an expression tag. Expression varies depending on the nature of the gene.

Components:	The ORF clone is ion-exchange column purified and shipped in a 2D barcoded Matrix tube containing 10ug of transfection-ready, dried plasmid DNA (reconstitute with 100 ul of water).
Reconstitution Method:	<ol style="list-style-type: none">1. Centrifuge at 5,000xg for 5min.2. Carefully open the tube and add 100ul of sterile water to dissolve the DNA.3. Close the tube and incubate for 10 minutes at room temperature.4. Briefly vortex the tube and then do a quick spin (less than 5000xg) to concentrate the liquid at the bottom.5. Store the suspended plasmid at -20°C. The DNA is stable for at least one year from date of shipping when stored at -20°C.
Note:	Plasmids are not sterile. For experiments where strict sterility is required, filtration with 0.22um filter is required.
RefSeq:	NM_008445.2 , NP_032471.2
RefSeq Size:	6849 bp
RefSeq ORF:	2391 bp
Locus ID:	16570
UniProt ID:	O35066
Cytogenetics:	12 1.77 cM
Gene Summary:	Microtubule-based anterograde translocator for membranous organelles.[UniProtKB/Swiss-Prot Function]

Product images:

Circular map for MG216335