

## Product datasheet for **MG216331**

### Fbxl22 (NM\_175206) Mouse Tagged ORF Clone

#### Product data:

**Product Type:** Expression Plasmids  
**Product Name:** Fbxl22 (NM\_175206) Mouse Tagged ORF Clone  
**Tag:** TurboGFP  
**Symbol:** Fbxl22  
**Synonyms:** 1110004B15Rik  
**Mammalian Cell Selection:** Neomycin  
**Vector:** pCMV6-AC-GFP (PS100010)  
**E. coli Selection:** Ampicillin (100 ug/mL)  
**ORF Nucleotide Sequence:** >MG216331 representing NM\_175206  
 Red=Cloning site Blue=ORF Green=Tags(s)

TTTTGTAATACGACTCACTATAGGGCGCCGGGAATTCGTCGACTGGATCCGGTACCGAGGAGATCTGCC  
 GCC**CGATCGCC**

ATGCACATAACCCAGCTCAATCGGGAGTGTCTGCTGTGTCTCTTCTCCTTCTGGACAAGGACAGCCGGA  
 GGAGCCTCTCCAGGACTTGCTCCCAGCTCCGAGATGTGTTTGAGGACCCACCCTCTGGCCCTGCTGCA  
 CTTCCATTCTCTCGCAGAGCTCAAGAAAGACAACCTCCGGCTGAGCCCTGCGCTGCGCAGCCTGTCCATC  
 TGTTGGCATTCCAGCCGTGTGCAGGTGTGCAGCATCGAGGACTGGCTCAAGAGCGCCCTCCAGAGGAGCA  
 TCTGCAGCCAGCACGAGAGCCTGGTTAATGATTTCTCCTGTCAGGTGTGCAACAGGTGCCCAACCTGAC  
 GTCCGTACGCTGTCCGGCTGCGGCCACGTCACGACGACTGCCTGGCGCGCTTGCTGCTCAGCTGCCCCG  
 CGCCTGCGTACGCTGCGCCTCGAGAACTGCGCGCGGTTACCAACCGCACGCTGGCGGCCGTGGCCGCGC  
 ACGGGCGCGCGCTGCAGACTCTGCACGTGGACTTCTGCCGCAACGTGAGCGCCGCCGCGCCTGCTCCGCT  
 CCGCGCCGCTGCCGAACCTGCGCCTCAGCGCCGAACGACGCGCGGCCATGATACCCGATCAGCCGCCG  
 CGCGCACGCGTGTGCGCTGCCTCAGTTTCTCGGCTGCACCGGGAGACAAAGCATGCCTCACCCACGG  
 GCTCCTAC

AGCGGACCGACGCGTACGCGCCGCTCGAG - GFP Tag - GTTTAA



[View online »](#)

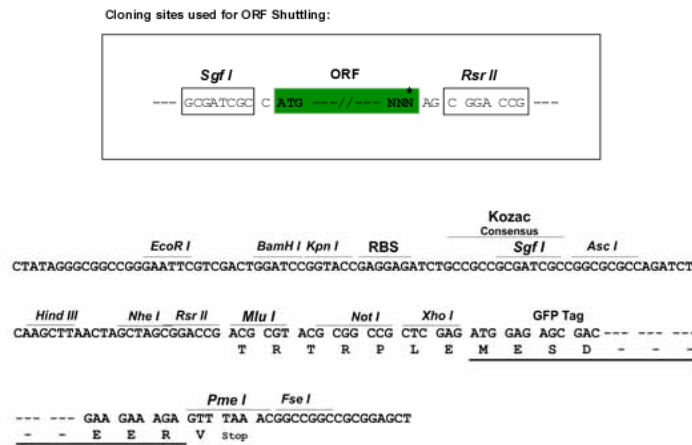
**Protein Sequence:** >MG216331 representing NM\_175206  
 Red=Cloning site Green=Tags(s)

MHITQLNRECLLCLFSLDKDSRRSLRSTCSQLRDVFEDPTLWPLLHFHSLAELKKNDFRLSPALRSLSI  
 CWHSSRVQVCSIEDWLKLSALQRSICSQHESLVNDFLLQVCNRCPNLTSVTLSGCGHVTDDECLARLLLSCP  
 RLRTLRLENCARVTNRTLAAVAHGRALQTLHVDFCRNVAAGLLRLRAACPRLRLSAERSAAMIPDQPP  
 RARVCAASAFSAAPGRQSMPHPTGSY

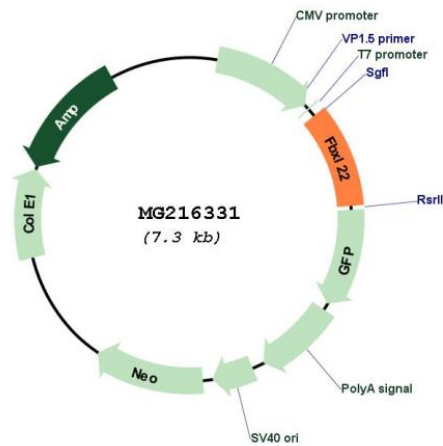
SGPTRRRLE - GFP Tag - V

**Restriction Sites:** SgfI-RsrII

**Cloning Scheme:**



**Plasmid Map:**



**ACCN:** NM\_175206

**ORF Size:** 708 bp

<b>OTI Disclaimer:</b>	The molecular sequence of this clone aligns with the gene accession number as a point of reference only. However, individual transcript sequences of the same gene can differ through naturally occurring variations (e.g. polymorphisms), each with its own valid existence. This clone is substantially in agreement with the reference, but a complete review of all prevailing variants is recommended prior to use. <a href="#">More info</a>
<b>OTI Annotation:</b>	This clone was engineered to express the complete ORF with an expression tag. Expression varies depending on the nature of the gene.
<b>Components:</b>	The ORF clone is ion-exchange column purified and shipped in a 2D barcoded Matrix tube containing 10ug of transfection-ready, dried plasmid DNA (reconstitute with 100 ul of water).
<b>Reconstitution Method:</b>	<ol style="list-style-type: none"><li>1. Centrifuge at 5,000xg for 5min.</li><li>2. Carefully open the tube and add 100ul of sterile water to dissolve the DNA.</li><li>3. Close the tube and incubate for 10 minutes at room temperature.</li><li>4. Briefly vortex the tube and then do a quick spin (less than 5000xg) to concentrate the liquid at the bottom.</li><li>5. Store the suspended plasmid at -20°C. The DNA is stable for at least one year from date of shipping when stored at -20°C.</li></ol>
<b>RefSeq:</b>	<a href="#">NM_175206.4</a> , <a href="#">NP_780415.1</a>
<b>RefSeq Size:</b>	3935 bp
<b>RefSeq ORF:</b>	711 bp
<b>Locus ID:</b>	74165
<b>UniProt ID:</b>	<a href="#">Q8C7B6</a>
<b>Cytogenetics:</b>	9 C
<b>Gene Summary:</b>	Substrate-recognition component of the SCF (SKP1-CUL1-F-box protein)-type E3 ubiquitin ligase complex. Promotes ubiquitination of sarcomeric proteins alpha-actinin-2 (ACTN2) and filamin-C (FLNC) (By similarity).[UniProtKB/Swiss-Prot Function]