

## Product datasheet for **MG216314**

### Nanos3 (NM\_194059) Mouse Tagged ORF Clone

#### Product data:

**Product Type:** Expression Plasmids  
**Product Name:** Nanos3 (NM\_194059) Mouse Tagged ORF Clone  
**Tag:** TurboGFP  
**Symbol:** Nanos3  
**Synonyms:** nos3  
**Mammalian Cell Selection:** Neomycin  
**Vector:** pCMV6-AC-GFP (PS100010)  
**E. coli Selection:** Ampicillin (100 ug/mL)  
**ORF Nucleotide Sequence:** >MG216314 representing NM\_194059  
 Red=Cloning site Blue=ORF Green=Tags(s)

TTTTGTAATACGACTCACTATAGGGCGGCCGGAATTCGTCGACTGGATCCGGTACCGAGGAGATCTGCC  
 GCC**CGATCGCC**

ATGGGGACTTTCAATCTTTGGACAGATTACCTAGGTCTGGCAAGACTGGTTGGGGCTCTGCATAAGGAAG  
 AGGAGCTTGATGTAAGGCTGGATCCAAACCAGAGCCCAAGCCAAGTTCAGAAAGCCAGCAAGCCAGCAA  
 GGAATCCTCTGCAGCTCCTGAACGCTTATGTTTCATTCTGCAAACACAATGGCGAGTCCCGTGCCATCTAT  
 CAGTCCCATGTCCTGAAGGATGAGGCAGGGCGGGTGTGTGTCCATTTTGGCGGATTATGTGTGTCCCC  
 AGTGTGGGGCCACTCAGGAGCACGCCACACTCGACGCTTTTGGCCACTCACCAGCCAGGGCTACACTTC  
 TGTCTACTGCTACACCACCCGGAATTCTGCAGGCAAAAAGCTGACCCGGCCTGACAAGGCAAGACACAG  
 GATGCTGGCCACCGCCTTGGAGGAGAAGCAGCAGGTTCTATGCAGTTCCAAAAGTGGCAGGAAGC  
 CCCTGGACCTTACCCTCGGCCTGCTGTCCCTCCACTACGGCC

**ACGCGT**ACGCGGCCGCTCGAG - GFP Tag - GTTTAA

**Protein Sequence:** >MG216314 representing NM\_194059  
 Red=Cloning site Green=Tags(s)

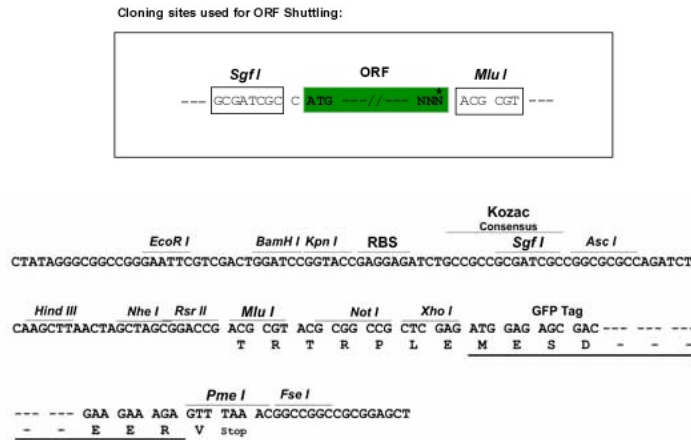
MGTFNLWDYLGARLVGALHKEEELDVRLDPKPEPKPSSSESQQASKESSAPERLCSFCKHNGESRAIY  
 QSHVLKDEAGRVLCPILRDYVCPQCGATQEHAHTRRFCLTSQGYTSVYCYTTRNSAGKLLTRPKAKTQ  
 DAGHRLGGEEAAGVYAGSKSGRPPGPPSPSACCPSTTA

**TRTRPLE** - GFP Tag - V

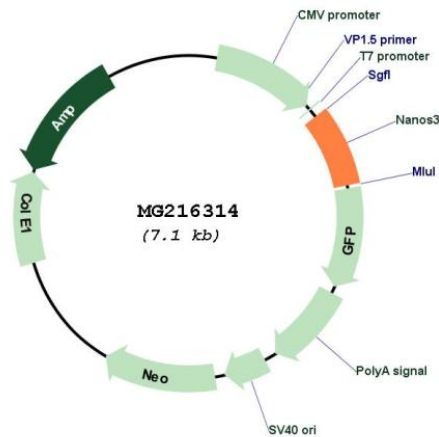
**Restriction Sites:** Sgfl-MluI



Cloning Scheme:



Plasmid Map:



ACCN: NM\_194059

ORF Size: 534 bp

OTI Disclaimer: The molecular sequence of this clone aligns with the gene accession number as a point of reference only. However, individual transcript sequences of the same gene can differ through naturally occurring variations (e.g. polymorphisms), each with its own valid existence. This clone is substantially in agreement with the reference, but a complete review of all prevailing variants is recommended prior to use. [More info](#)

OTI Annotation: This clone was engineered to express the complete ORF with an expression tag. Expression varies depending on the nature of the gene.

<b>Components:</b>	The ORF clone is ion-exchange column purified and shipped in a 2D barcoded Matrix tube containing 10ug of transfection-ready, dried plasmid DNA (reconstitute with 100 ul of water).
<b>Reconstitution Method:</b>	<ol style="list-style-type: none"><li>1. Centrifuge at 5,000xg for 5min.</li><li>2. Carefully open the tube and add 100ul of sterile water to dissolve the DNA.</li><li>3. Close the tube and incubate for 10 minutes at room temperature.</li><li>4. Briefly vortex the tube and then do a quick spin (less than 5000xg) to concentrate the liquid at the bottom.</li><li>5. Store the suspended plasmid at -20°C. The DNA is stable for at least one year from date of shipping when stored at -20°C.</li></ol>
<b>RefSeq:</b>	<u><a href="#">NM_194059.2</a></u> , <u><a href="#">NP_918948.1</a></u>
<b>RefSeq Size:</b>	730 bp
<b>RefSeq ORF:</b>	537 bp
<b>Locus ID:</b>	244551
<b>UniProt ID:</b>	<u><a href="#">P60324</a></u>
<b>Cytogenetics:</b>	8 C2
<b>Gene Summary:</b>	Plays a role in the maintenance of the undifferentiated state of germ cells regulating the spermatogonia cell cycle and inducing a prolonged transit in G1 phase. Affects cell proliferation probably by repressing translation of specific mRNAs. Maintains the germ cell lineage by suppressing both Bax-dependent and -independent apoptotic pathways. Essential in the early stage embryo to protect the migrating primordial germ cells (PGCs) from apoptosis.[UniProtKB/Swiss-Prot Function]