

Product datasheet for **MG216305**

Plekhg5 (NM_001004156) Mouse Tagged ORF Clone

Product data:

Product Type:	Expression Plasmids
Tag:	TurboGFP
Symbol:	Plekhg5
Synonyms:	BC023181; mKIAA0720; RP23-284C20.1; Syx
Mammalian Cell Selection:	Neomycin
Vector:	pCMV6-AC-GFP (PS100010)
E. coli Selection:	Ampicillin (100 ug/mL)



ORF Nucleotide Sequence: >MG216305 representing NM_001004156
Red=Cloning site Blue=ORF Green=Tags(s)

TTTTGTAATACGACTACTATAGGGCGCCGGGAATTCGTGCGACTGGATCCGGTACCGAGGAGATCTGCC
GCCGGATCGCC

ATGGGGACAGGACCGGGCGTCTCCGGGCGCCGAGCAGCAGCCAGGCCAGCTCTGAGCTACCCCTCCCGAG
ACTCCAGCTCCTCTGGGTCGGGGTTCATGCCACAGCAGCGACAGCCAGGTATGCCATCATGCCGACTG
CCAGCAGCTGCACCACCGGGGCTCTCAACCTGTGTGAGACCTGTGATAGCAAGTTCACAGCACCCCTG
CACTACGACGGCCATGTCGATTTGACCTGCCCCCGCAAGGCTCTGTCTGGCCCGGAATGTTCCACCC
GGTCTGTCTCCCGCACCCAGCCCTGCTGCAGACCTGGAGGAAGAAGAGGAAGGCTGTACCGACGGAAA
AGGGGACCGGAAGAGCGCCGGCTAAAAATCTCTAAGAAGAAGCAAGGAGGAGACACAGATGACCCG
AGCAAGGAGTGCTTACCTTGAATTCGACCTGAACGTGGACATCGAAACAGAAATTTGCCAGCCATGA
AGAAGAAGTCACTGGGGAAAGTACTGCTGCCTGTGTTGAGAGGAAGGGCATCGCACTGGGCAAGTAGA
CATCTACCTGGATCAATCCAACACACCCCTGTCCCTCACCTTCGAGGCCACAGGTTTGGAGGACTAC
CTGCGGGTCAAAGCCAAGCCGGGGACGAGGGCAAGGTGGAGCAGGGAGTGAAGGATTCCAAGTCCCTCA
GTCTGCCAGCCCTGAGGCCAGTGGGGCTGGGCCCTGTGTGCGAACGTGTGGACCCTCAGAGCCGCCG
AGAGAGCAGTCTGGACATCTTGGCCCTGGCCGCGTGCAGAACAATGTCTGAATTCCTGGGAGAGGCA
GGCATCCCTGGACACGAGCCCCCGCACCTTCCAGCTGTTCTGCCCCGTTGGCAGCAGTGGGGGTACCA
GCAGTGGCATCAATGAGAGCTGGAAGAACCAGGAGCCAGTGCCTTCAAGCGGCTTCTCAGCTCCAGCCC
GAGCACCAGTGCCTTTAGCCGGGAGGTAGACAAGATGGAACAGCTGGAGAGCAAGTCCATGCCTACAGC
CTTTTCGGGCTACCCCGATGCCAGGAGGCTGCGCTTTGACCATGACTCCTGGGAGGAGGAAGAGGAAG
ATGACGAGGAGGATGAAGAGAGTTCAGGCCTGAGGCTGGAGGACAGCTGGAGGGAGCTCACTGATGGCA
TGAGAAGCTGACCAAGCGGCAGTGCACCAACAGGAGGCAAGTGTGGAACTCCTCCACACAGAAAGTCTCC
TACATCCGAAACTACGTGTGATCACCAACCTGTTCTGTGTTGTCTTTAACCTACAAGAGTCGGGGC
TCCTGTGTGAGGTTGAGGCTGAGCGCTTGTTCAGCAACATTCTGAGATCGCAAGCTACACCCGGGCTT
GTGGGGCAGCGTGATGGTGCAGTGTGGAAGAAGCGCGGCGGACCGGGCGCTGCTGCAGCCACGCGAC
TTTCTCAAAGGCTTCAAGATGTTTCGGTCACTTCAAGCCATACATCCGATACTGTATGGAAGAGGAGG
GCTGCATGGAGTACATGCGCGGCTGCTGCGTGACAACGATCTGTTCCGGGCATACGTCACGTGGGCGGA
GAAGCACCAGCAGTGCAGCGGCTGAAGCTGAGTGACATGCTGGCCAAGCCCCACCAGCGGCTCACCAA
TACCCACTGCTGCTCAAGTCGGTGTCAAGGAAGACAGATGATCCCCGCACCAAGGAAGCCATCGTACCA
TGATCAGCTCGGTGGAACGCTTTCATACACCACGTGAACACGTGCATGCGGCAGCGGCAGGAGCGGCAGCG
CCTGGCGGGGGTGGTGAAGCGGATCGATGCCTACGAGGTTGTGGAGGGCAGCAACGACGAGGTGGATAAG
CTCCTGAAGGAATTTCTACATCTGGACCTGACAGCACCCATGCCTGGAACCTCCCCTGAAGAGACCCGAC
AGCTGCTGCTGGAAGGGAGCCTGAGGATGAAGGAGGGGAAAGATAGCAAGATGGACGTGACTGCTTCTCT
CTTCACTGACCTACTTTCGGTACCAAGGCGGTGAAGAAAGCAGAGAGGACGAAGGTCAATCAGGCCACCG
CTACTGGTGGACAAGATTGTGTGCCGGAACTTCGGGACCCTGGTTCCTTCTCCTCATCTACCTGAATG
AATTCACAGTGTGTGGGGGCTACACTTTCAGGCCAGCAGCCAGGCCTTGTGCCGAGCTGGGTGGA
CACTATTTACAACGCACAGAACCAGCTGCAGCAGCTGCGTGCACAGCTCAGTGCACAGGAGCACCAGGC
AGCCAGCATCTGCAGAGCCTGGAAGAGGAGGAAGATGAGCAGGAGGAGGAGGTTGAAGAGAGCGGTACCT
CAGCTGCCAGCTCCCCACCATCCTTCGAAAGAGCAGCAACAGCCTCGACTCTGAGCACTGCACCTCAGA
TGGCTCCACGGAGACCCCTGGCCATGGTGTGGTAGAGCCTGGGGCGCACTGTCTTCCCGGAGTTTGAA
GGCGGTCCCCTCAGCTCCAGTCGGACGAATCTTCTCAGTAACACTGCTTCTCTGTCACTCCACCA
GGAGCTGCTGCCCTGGCCCTGTGGATGGCCGCTCCTGCTCCATGGACTCCGCTATGGACCCCTGTG
CCCCACTTCCCTTCAAGACTTTGTGGTCCACACCCCGTGGTGCAGCCAGCGCCTGTGCTCAGACCCCC
TCTCCCAGCCCTACCCCGCCTCCGCCGTCGCACTCCTGTCCAGCTGCTCCCTCGCCCGCCCGCCTGC
TCAAGTCAAATCGGAGGCTAGCCTTACAATTAAGTGTGAGGAACCCAGCCCGGTTGGCGTGCCTCC
GGCTCCCAGCCGACGCTGTGAGAAGTGTGCTGATCTGTGGCCCTGGGGTTAGGACTCAGCCGCC
CTTCAGGAAGGTGGTCTGGCTGGAATGGTCCAGGGATGTGTGACCCTGCCATGGCCCTCAGTTGTGAG
AATCTGAGAACAGACCTAGCCACATGACGGGGGACCTGCAGATTTGCCCGAAGGAGATGCAGAGAGAT
GCCTTCTGGGACTATGTCCAGGTCAGTCTGAGCCTCCCTCAGGGTCTGTCTCAACACAGGAAGCTG
ACCTGGCCAGCTCTACCGGATCAGGACCACCTGCTGCTCAACTCCACGCTCACTGCCTCG

ACGGTACGCGGCCGCTCGAG - GFP Tag - GTTAA

Protein Sequence:

>MG216305 representing NM_001004156
 Red=Cloning site Green=Tags(s)

MGTGPGVSGRRRAARPSSSELPSPDSQLLWVGGHAHSSDSQVCHHADCCQLHHRGPLNLCETCDSKFHSTL
 HYDGHVRFDLPPQGSVLARNVSTRSCPPRTSPAADLEEEEGCTDGKGRKSAGLKISKKKARRRHTDDP
 SKECFTLKFDLNDIETEIVPAMKKKSLGEVLLPVFERKGIALGKVDIYLDQSNTPLSLTFEAYRFGGHY
 LRVKAKPGDEGKVEQGVKDSKLSL PALRPSGAGPPVSEVDPQSRRESSLDILAPGRRRKNMSEFLGEA
 GIPGHEPPAPSSCSLPGVSSGGTSSGINESWKNRAASRFSGFFSSSPSTSAFSREVDKMEQLESKLHAYS
 LFGLPRMPRLRFHDHSDWEEEEDEEDEESSGLRLEDSWRELTGHEKLTTRRQCHQQA V W E L L H T E V S
 YIRKLRVITNLFLCCLLNQESGLLCEVEAERLFSNIPEIAKLHRGLWGSVMVPVLEKARRTRALLQPSD
 FLKGFKMFGLFKPYIRYCMEEEGCMEYMRGLLRDNDLFRAYVTWAEKHQQCQRKLS D M L A K P H Q R L T K
 YPLLLKSVLRKTD D P R T K E A I V T M I S S V E R F I H H V N T C M R Q R Q E R Q L A G V V S R I D A Y E V V E G S N D E V D K
 LLKEFLHLDLTAPMPGTSPEETRQLLLEGLSLRMKEGKDSKMDVYCF L F T D L L L V T K A V K K A E R T K V I R P P
 LLVDKIVCRELRDPGSFLLIYLN EFHSAVGAYTFQASSQALCRSWVDTIYNAQNQLQLRAQLSAQEHPG
 SQHLQSL E E E E D E Q E E E G E E S G T S A A S S P T I L R K S S N S L D S E H C T S D G S T E T L A M V V V E P G A T L S S P E F E
 GGPVSSQSD E S S L S N T A S S V T P T S E L L P L G P V D G R S C S M D S A Y G T L S P T S L Q D F V A P H P V V E P A P V P Q T P
 SPQPSRLRRRTPVQLPRPPRLKSKSEASLLQLLSGTPAARGVPPAPSRSLSELCLISVAPGVRTQRP
 LQEGGPGWNGPGMCDPCHGPQLSESENRP SHMTGGPADSARRRCREMPSGTMSRVQSEPPSGVSAQHRKL
 TLAQLYRIRTTLLLNSTLTAS

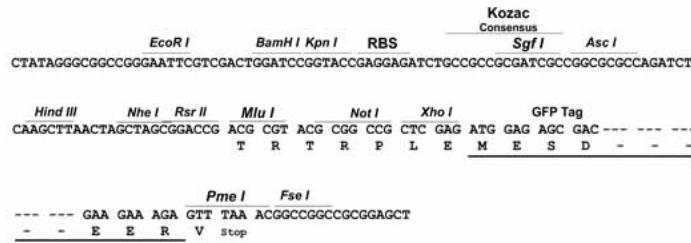
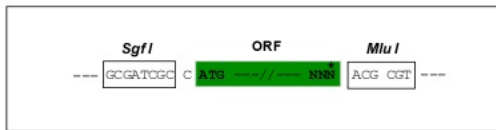
TRTRPLE - GFP Tag - V

Restriction Sites:

SgfI-MluI

Cloning Scheme:

Cloning sites used for ORF Shutting:



ACCN:

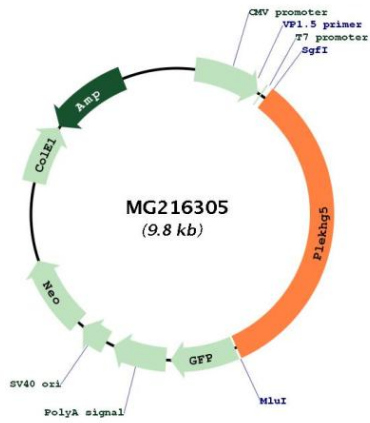
NM_001004156

ORF Size:

3213 bp

OTI Disclaimer:	<p>Due to the inherent nature of this plasmid, standard methods to replicate additional amounts of DNA in E. coli are highly likely to result in mutations and/or rearrangements. Therefore, OriGene does not guarantee the capability to replicate this plasmid DNA. Additional amounts of DNA can be purchased from OriGene with batch-specific, full-sequence verification at a reduced cost. Please contact our customer care team at custsupport@origene.com or by calling 301.340.3188 option 3 for pricing and delivery.</p> <p>The molecular sequence of this clone aligns with the gene accession number as a point of reference only. However, individual transcript sequences of the same gene can differ through naturally occurring variations (e.g. polymorphisms), each with its own valid existence. This clone is substantially in agreement with the reference, but a complete review of all prevailing variants is recommended prior to use. More info</p>
OTI Annotation:	<p>This clone was engineered to express the complete ORF with an expression tag. Expression varies depending on the nature of the gene.</p>
Components:	<p>The ORF clone is ion-exchange column purified and shipped in a 2D barcoded Matrix tube containing 10ug of transfection-ready, dried plasmid DNA (reconstitute with 100 ul of water).</p>
Reconstitution Method:	<ol style="list-style-type: none">1. Centrifuge at 5,000xg for 5min.2. Carefully open the tube and add 100ul of sterile water to dissolve the DNA.3. Close the tube and incubate for 10 minutes at room temperature.4. Briefly vortex the tube and then do a quick spin (less than 5000xg) to concentrate the liquid at the bottom.5. Store the suspended plasmid at -20°C. The DNA is stable for at least one year from date of shipping when stored at -20°C.
Note:	<p>Plasmids are not sterile. For experiments where strict sterility is required, filtration with 0.22um filter is required.</p>
RefSeq:	<p>NM_001004156.2, NP_001004156.1</p>
RefSeq Size:	<p>4113 bp</p>
RefSeq ORF:	<p>3216 bp</p>
Locus ID:	<p>269608</p>
Cytogenetics:	<p>4 E2</p>
Gene Summary:	<p>This gene encodes a protein belonging to the Rho guanine exchange factor (GEF) family of proteins, which activate GTPases by replacing GDP with GTP. This family member is a RhoA GEF that plays a role in endothelial cell migration and tube formation. It is required for angiogenesis and may function in neuronal cell differentiation. Alternative splicing of this gene results in multiple transcript variants. [provided by RefSeq, Oct 2013]</p>

Product images:



Circular map for MG216305