

## Product datasheet for **MG216304**

### Zfp647 (NM\_172817) Mouse Tagged ORF Clone

#### Product data:

Product Type:	Expression Plasmids
Product Name:	Zfp647 (NM_172817) Mouse Tagged ORF Clone
Tag:	TurboGFP
Symbol:	Zfp647
Synonyms:	6030449J21; Es492; Znf250
Mammalian Cell Selection:	Neomycin
Vector:	pCMV6-AC-GFP (PS100010)
E. coli Selection:	Ampicillin (100 ug/mL)



[View online »](#)

**ORF Nucleotide Sequence:**

>MG216304 representing NM\_172817  
 Red=Cloning site Blue=ORF Green=Tags(s)

TTTTGTAATACGACTCACTATAGGGCGGCCGGGAATTCGTCGACTGGATCCGGTACCGAGGAGATCTGCC  
 GCC**GCGATCGCC**

ATGGCAGCAGCCGGGCTTCTACCCTGCCAGCAGCACAGGCCAAAGTGACCTTTGAGGATGTGGCTG  
 TTCTGCTGTCTCAGGAGGAGTGGGCCCGCTGGGCCCTGCTCAGCGGGGCTCTACCAGACGTCATGAT  
 GGAGACCTACGGGAATGTAGTCTCACTGGGACTTCCAGGATCTAAGCCTGTTGTGATCTCCAGCTGGAG  
 CGAGGAGAAGACCCGTGGGTCTGGATGGACAGGGAACCGAGCTGAGCCAGAGCCTGGGAAGTGACCACT  
 CAGAATGCAAAGCCAAGGAAGAGAACAAAACACAGACTTGAATGTGCCACCATTAATCTCAGACGAAGC  
 ATCAGCGACGCTGACGGAAACACCGCTGAGGAAGGTTGCTGAAGAACGTTACAAAACAGAACCGAAGGTC  
 TGCCCCAGTCAAAGCCATTGGCCCCAGAATGCCACGGGTTGAACCTAGTGTACCCGTTGCCCGAC  
 CCCAGACGGCTCCAGTGTGAGAGACCCTATATCTGCATTGAGTGTGAAAAGTGCTTTGGTCGGAGCTC  
 CCATCTCCTTTCAGCATCAGCGAATACACACTGGCGAGAAGCCCTACGTATGCCATGTATGCGGAAAGGCT  
 TTCAGCCAGAGTTCGGTCTGAGCAAGCACAGGCGGATCCACACGGGCGAGAAGCCCTACGAGTGTAAAG  
 AATGTGGGAAAGCCTTTCGCGTGTGAGTTCGGACCTTGCCAGCACCACAAGATCCACACCGGAGAGAGCC  
 TCACGAGTGTCTGGAATGTGGGAAGGCTTACCCAGCTCTCCACCTCATCCAACATCAGCGGATCCAC  
 ACGGGGAGCGGCCCTACGTGTCTCCCTTGTGTGGGAAAGCCTTCAACCACAGCACCGTCTGCGGAGCC  
 ACCAGAGGGTGCACACTGGGAGAAGCCTCACGGGTGCAGCGAGTGTGGGAAGACCTTACGCGTGAAGAG  
 GACGCTGTGCAGCACAGCGGGTGCACACCGGGGAGAAGCCCTACAGTGCAGCGAGTGCGGGAAGGCC  
 TTCAGCGACCGCTCCGTGCTCATCCAACATCACAACTACACACTGGGGAGAAGCCGTACGAGTGCAGCG  
 AGTGGCGCAAGACCTTTAGCCACCGCTCCACCCTGATGAATCACGAGAGGATTACACGAGGAGAAGCC  
 CTACGCGTGTACGAGTGCGGGAAGGCCCTTTGTCCAGCACTCGCATCTCATCCAGCATCAGAGAGTCCAC  
 ACGGGAGAGAAACCCTACGTGTGTGGCGAGTGTGGCCATGCTTTTCAGCGCACGCCGTCCTGATCCAGC  
 ATGAGCGAATCCACACAGGCGAGAAACCCTTTCAGTGCACAGAGTGTGGCAAAGCCTTACGCTGAAAGC  
 AACTCTGATCGTGCACCTGAGGACCCACACGGGCGAGAAACCCTATGAGTGAATAGCTGCGGCAAGGCC  
 TTCAGCCAGTACTCGGTGCTCATCCAACACCAGAGGATCCACACCGGAGAGAAACCCTATGAGTGTGGCG  
 AGTGGCGAGCGGCCCTTCAACCAGCACGGCCACCTGATCCAACATCAGAAAGTACACAAGAAGCTG

AG**CGGACCG**ACGCGTACGCGGCCGCTCGAG - GFP Tag - GTTTAA

**Protein Sequence:**

>MG216304 representing NM\_172817  
 Red=Cloning site Green=Tags(s)

MAAAGLLPLPAAPQAKVTFEDVAVLLSQEWARLGPQRGLYRHVMMETYGNVSVSLGLPGSKPVVISQLE  
 RGEDPWVLDGQGTLSQSLGSDHSECKAKEENQNTDLNVPPPLISDEASATLTETPLRKVAEERYKTEPKV  
 CPSPKPIGPQNAHGLNPSVVARPQTAPSVERPYYICIECGKCFGRSSHLLQHQRIHTGEKPYVCHVCGKA  
 FSQSSVL SKHRRHTGEKPYECNECGKAFRVSSDLAQHHKIHTGEKPHECLECGKAFTQLSHLIQHQRH  
 TGERPYVCP LCGKAFNHSTVLRSHQRVHTGEKPHGCSECGKTF SVKRTLLQHQRVHTGEKPYTCSECGKA  
 FSDRSVL IQHHNVHTGEKPYECSECGKTF SHRSTLMNHERIHTQEKPACYECGKAFVQHSHLIQHQRVH  
 TGEKPYVCGEGHAFSARRSLIQHERIHTGEKPFQCTECGKAFSLKATLIVHLRTHHTGEKPYECNSCGKA  
 FSQYSVL IQHQRIHTGEKPYECGEGRAFNQHGHLIQHQKVVHKKL

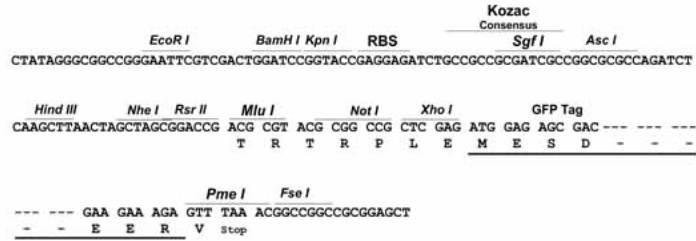
SGP**TRRRLE** - GFP Tag - V

**Restriction Sites:**

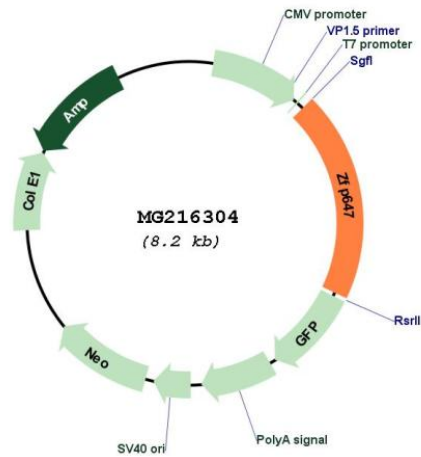
Sgfl-RsrII

Cloning Scheme:

Cloning sites used for ORF Shuttling:



Plasmid Map:



<b>ACCN:</b>	NM_172817
<b>ORF Size:</b>	1605 bp
<b>OTI Disclaimer:</b>	The molecular sequence of this clone aligns with the gene accession number as a point of reference only. However, individual transcript sequences of the same gene can differ through naturally occurring variations (e.g. polymorphisms), each with its own valid existence. This clone is substantially in agreement with the reference, but a complete review of all prevailing variants is recommended prior to use. <a href="#">More info</a>
<b>OTI Annotation:</b>	This clone was engineered to express the complete ORF with an expression tag. Expression varies depending on the nature of the gene.
<b>Components:</b>	The ORF clone is ion-exchange column purified and shipped in a 2D barcoded Matrix tube containing 10ug of transfection-ready, dried plasmid DNA (reconstitute with 100 ul of water).
<b>Reconstitution Method:</b>	<ol style="list-style-type: none"><li>1. Centrifuge at 5,000xg for 5min.</li><li>2. Carefully open the tube and add 100ul of sterile water to dissolve the DNA.</li><li>3. Close the tube and incubate for 10 minutes at room temperature.</li><li>4. Briefly vortex the tube and then do a quick spin (less than 5000xg) to concentrate the liquid at the bottom.</li><li>5. Store the suspended plasmid at -20°C. The DNA is stable for at least one year from date of shipping when stored at -20°C.</li></ol>
<b>RefSeq:</b>	<a href="#">NM_172817.3</a> , <a href="#">NP_766405.2</a>
<b>RefSeq Size:</b>	2233 bp
<b>RefSeq ORF:</b>	1608 bp
<b>Locus ID:</b>	239546
<b>UniProt ID:</b>	<a href="#">Q7TNU6</a>
<b>Cytogenetics:</b>	15 D3
<b>Gene Summary:</b>	May be involved in transcriptional regulation.[UniProtKB/Swiss-Prot Function]