

Product datasheet for **MG216292**

Slitrk2 (NM_198863) Mouse Tagged ORF Clone

Product data:

Product Type:	Expression Plasmids
Product Name:	Slitrk2 (NM_198863) Mouse Tagged ORF Clone
Tag:	TurboGFP
Symbol:	Slitrk2
Synonyms:	A930040J07
Mammalian Cell Selection:	Neomycin
Vector:	pCMV6-AC-GFP (PS100010)
E. coli Selection:	Ampicillin (100 ug/mL)



[View online »](#)

ORF Nucleotide Sequence:

>MG216292 representing NM_198863
 Red=Cloning site Blue=ORF Green=Tags(s)

TTTTGTAATACGACTCACTATAGGGCGGCCGGGAATTCGTCGACTGGATCCGGTACCGAGGAGATCTGCC
 GCC**CGCATCGCC**

ATGCTGAGCGCGCTTTGGTTCCCTCAGTGTGTTAACAGTGGCCGGGATCTTACAGACCAGAGTGCAGAAA
 CTGCCAAAGACATTTGCAAGATCCGCTGCTTGTGCGAAGAGAAGGAAAACGTAATATTAACCTGTGA
 AAACAAAGGATTTACAACGTGTCAGTTTGTCAACCCCCCAGTATCGCATCTATCAGCTGTTTCTCAAC
 GAAACCTCTTGACCAGACTGTATCCAATGAGTTGTCAATTATTCAAATGCGGTGACTCTTCATCTAG
 GTAACAATGGGCTGCAGGAGATCCGACCTGGGGCATTAGTGGTCTGAAAACCTCAAAGACTGCACCT
 CAATAACAACAACTGGAGGATTGCGAGAGGACACTTTTCTAGGCCTAGAGAGTCTGGAGTACCTCAA
 GCTGACTACAATTACATCAGCACCATCGAGGCAGGGCATTAGCAAACTGAATAAGCTGAAAGTACTCA
 TCCTGAATGACAACCTTTTGTGCTTTTGCAGTAATGTGTTTCGGTTTGTCTGCTGACTCACTTAGA
 CCTGAGGGGAAACAGGTTGAAAGTAATGCCTTTTGTGCTGCTTGAACATATTGGAGGAATCATGGAA
 ATTCAGCTGGAAGAAAACCCGTGGAATTGCACCTGTGACTTACTCTCAAGGCATGGCTGGACACCA
 TTAAGTGTGTTTGTGGGGGAGATTGTCTGTGAAACCCCTTTCAGGTTACATGGGAAAGATGTGACCCAGT
 GACCAGACAAGACCTCTGTCCCAGAAAAGTGAAGTGGTATTCTAGTCAGAGGAGCAGCCATTGAGAC
 ACACATGTTCAAAGGCTGACCCCTACAACAAATCCTGCTCTCAACCAACCCAGAGCTCCAAAAGCCAGCC
 GGCCACCCAAAATGAGAAATCGTCCGACTCCTCGAGTACTGTGTCAAAGACCAGGAGCTTTGGCC
 GATCATGGTGTACCAGACCAAGTCCCGTGGCCCTCACCTGTCCAGCAGCTGTGTCTGACTTCTCAG
 AGCTCAGACAATGGTCTAAATGTGAATTGCCAAGAAAGGAAGTCACTAACATCTCTGACCTACAGCCCA
 AACCTACCAGTCAAAGAAACTACCTAACAGGGAATCTCAACACAGTCTATAAGAAATGACCTT
 AGAATACAGTTCACTGGATTTGTTGCATTTAGGAAACAACAGGATTGCAGTCATTAGGAAGGTGCCTTT
 ACAACCTGACCAGTTTACGAAGACTTTATCTGAATGGCAATTACCTGAAAGTGTGTATCCTTCTATGT
 TTGATGGACTGCAGAGCTTGCAGTATCTCTATTTAGAGTATAATGTCATTAAGGAAATTAAGCCTCTGAC
 CTTTGTGCTTTGATTAACCTCCAGCTCCTGTTTCTGAATAACAACCTGTGAGGTCCTTACCTGATAAT
 ATATTTGGGGGCACAGCCCTCACCAGGCTGAATCTGAGAAACAATCATTTTTCTCACCTGCCTGTGAAAG
 GGGTCTGGACCAGCTTCTGCTTTTATCCAGATAGATCTGCAAGAGAACCCATGGGACTGCACCTGTGA
 CATCATGGGCTAAAGGACTGGACCGAACATGCCAATTCTCCTGTATCATCAATGAGGTGACTTGTGAG
 TCTCCCGCTAAGCATGCAGGGGAGATACTGAAATTCCTGGGAAGGAGGCTATTTGTCCAGAAAATCCTA
 ACCTGTCAGATGGGACTATTTTGTCAATGAATCACAACACAGACACACCTAGATCACTTAGTGTGTCTCC
 TAGTTCTTACCCGAACTACACACTGAAGTTCCTCTCCGTTTTAATTTAGGATTGCTTGTGGTTTTT
 ATCCTGTCTGTCTGTTTTGGGGCGGGTGTTCGCTTTTGTCTGAAGCGTCGAAAGGGAGTGCCAAATG
 TTCCCAGGAATGCCACCAACTTAGATGTAAGTTCCTTCCAGTTACAATATGGGTCTTACAACACCAGAC
 TAATGATAAAGCTGATGGCCACGTCTATAACTACATTCCTCCACCTGTGGGTGAGATGTGCCAAAACCC
 ATCTACATGCAGAAGGAAGGAGACCCAGTGGCCTATTACCGAAATCTGCAGGACTTCAGCTATGGCAACC
 TGGAGGAAAAAAGAAGAACCTGCCACACTTGCTTACACAATAAGTGCCACTGAGTTGCTAGAAAAACA
 GGCCACACCAAGAGAGCCTGAGCTGCTGTATCAGAATATTGCTGAGCGAGTTAAGAAGTCCCAAGTGA
 GGCTAGTCCACTATAACTTTTGTACCTTACCTAAAAGGAGTTTGGCCCTTCATATGAATCTCGACGCC
 AAAACCAAGACAGAATCAATAAAACCGTTTTATATGGGACTCCCAGAAAATGCTTTTGTGGGGCAGTCAAA
 GCCAGACCACCTTACTGCAAGCTAAACCGCAATCGGAACCAGACTACCTCGAAGTTCTGGAAAAACAA
 ACTGCAATCAGTCAGCTG

ACGCGTACGCGGCCGCTCGAG – GFP Tag – GTTTAA

Protein Sequence: >MG216292 representing NM_198863
 Red=Cloning site Green=Tags(s)

```

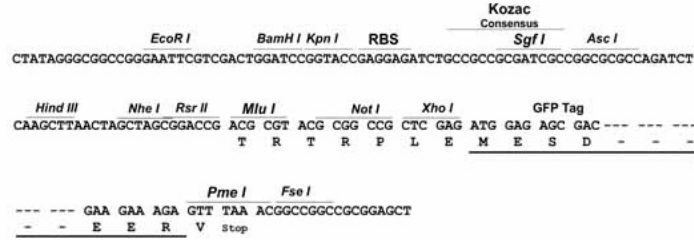
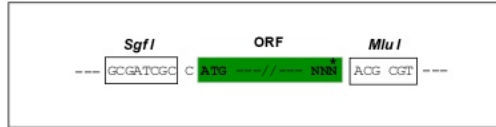
MLSGVWFLSVLTVAGILQTESRKTAKDICKIRCLCEEKENVLNINCENKGFTTVSLLQPPQYRIYQLFLN
GNLLTRLYPNEFVNYSNAVTLHLGNGLQEIRPGAFSGLKTLKRLHLNNNKLEVLREDTFLGLESLEYLQ
ADYNYISTIEAGAFSKLNKLVILNDNLLLSPSNVFRFVLLTHLDRGNRLKVMPFAGVLEHIGGIME
IQLEENPWNCTCDLLPLKAWLDTITVFVGEIVCETPFRLHGKDVTQLTRQDLCPRKSASGDSSQRSSHSD
THVQRLTPTTNPALNPTRAPKASRPPKMRNRPTPRVTVSKDRQSFGPIMVYQTKSPVALTCPSSCVCTSQ
SSDNGLNVNCQERKFTNISDLQPKPTSPKKLYLTGNYLQTVYKNDLLEYSDDLHLGNRIAVIQEGAF
TNLTSRRLYLNGNYLEVLYPSMFDGLQSLQYLLEYNVIKEIKPLTFDALINLQLLFLNNLLRSLPDN
IFGGTALTRLNLRNNHFSHLPVKGVLDQLPAFIQIDLQENPWDCTCDIMGLKDWTEHANSPIINEVTCE
SPAKHAGEILKFLGREAI CPENPNLSDGTILSMNHNTDTPRSLSVSPSSYPELHTEVPLSVLILGLLVVF
ILSVCFGAGL FVFVLKRRKGVNVPVPRNATNLDVSSFQLQYGSYNTETNDKADGHVYNYIPPPVGMQCNP
IYMQKEGDPVAYYRNLQDFSYGNLEEKKEEPATLAYTISATELLEKQATPREPELLYQNI AERVKELPSA
GLVHYNFCTLPKRQFAPSYESRRQNQDRINKTVLYGTPRKCFVQSKPDHPLLQAKPQSEPDYLEVLEKQ
TAISQL
  
```

TRTRPLE - GFP Tag - V

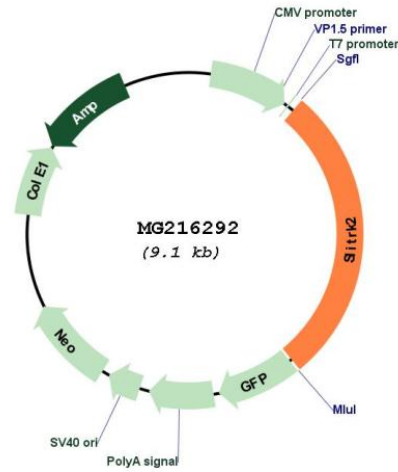
Restriction Sites: Sgfl-Mlul

Cloning Scheme:

Cloning sites used for ORF Shuttling:



Plasmid Map:



ACCN:	NM_198863
ORF Size:	2538 bp
OTI Disclaimer:	<p>Due to the inherent nature of this plasmid, standard methods to replicate additional amounts of DNA in E. coli are highly likely to result in mutations and/or rearrangements. Therefore, OriGene does not guarantee the capability to replicate this plasmid DNA. Additional amounts of DNA can be purchased from OriGene with batch-specific, full-sequence verification at a reduced cost. Please contact our customer care team at custsupport@origene.com or by calling 301.340.3188 option 3 for pricing and delivery.</p> <p>The molecular sequence of this clone aligns with the gene accession number as a point of reference only. However, individual transcript sequences of the same gene can differ through naturally occurring variations (e.g. polymorphisms), each with its own valid existence. This clone is substantially in agreement with the reference, but a complete review of all prevailing variants is recommended prior to use. More info</p>
OTI Annotation:	This clone was engineered to express the complete ORF with an expression tag. Expression varies depending on the nature of the gene.
Components:	The ORF clone is ion-exchange column purified and shipped in a 2D barcoded Matrix tube containing 10ug of transfection-ready, dried plasmid DNA (reconstitute with 100 ul of water).
Reconstitution Method:	<ol style="list-style-type: none"> 1. Centrifuge at 5,000xg for 5min. 2. Carefully open the tube and add 100ul of sterile water to dissolve the DNA. 3. Close the tube and incubate for 10 minutes at room temperature. 4. Briefly vortex the tube and then do a quick spin (less than 5000xg) to concentrate the liquid at the bottom. 5. Store the suspended plasmid at -20°C. The DNA is stable for at least one year from date of shipping when stored at -20°C.
RefSeq:	NM_198863.2 , NP_942563.2
RefSeq Size:	7754 bp
RefSeq ORF:	2541 bp
Locus ID:	245450
UniProt ID:	Q810C0
Cytogenetics:	X A7.1
Gene Summary:	It is involved in synaptogenesis (PubMed:25989451). Promotes excitatory synapse differentiation (By similarity). Suppresses neurite outgrowth (PubMed:14550773). [UniProtKB/Swiss-Prot Function]