

## Product datasheet for **MG216266**

### Synpo2 (NM\_080451) Mouse Tagged ORF Clone

#### Product data:

**Product Type:** Expression Plasmids  
**Product Name:** Synpo2 (NM\_080451) Mouse Tagged ORF Clone  
**Tag:** TurboGFP  
**Symbol:** Synpo2  
**Synonyms:** 1110069I04Rik; 2310068J10Rik; 9530006G20Rik; AI848603; Myo  
**Mammalian Cell Selection:** Neomycin  
**Vector:** pCMV6-AC-GFP (PS100010)  
**E. coli Selection:** Ampicillin (100 ug/mL)  
**ORF Nucleotide Sequence:** >MG216266 representing NM\_080451  
Red=Cloning site Blue=ORF Green=Tags(s)

TTTTGTAATACGACTCACTATAGGGCGGCCGGAATTCGTCGACTGGATCCGGTACCGAGGAGATCTGCC  
GCC**CGATCGCC**

ATGGGCACCGGAGATTTTCATCTGCATTTCCATGACTGGAGGGGCGCCCTGGGGTTTCAGACTGCAAGGAG  
GCAAGGAGGAGCAGCAGCCTTTGCAAGTTGCAAAGATTCGAAGCCAGAGCAAGGCGTCGGCTCCGGCT  
GCGTGAGGGGGATGAAGTGGTGTCCATCAATGGCAACCCCTGTGCAGACCTTACTTACCCTGAAGTCATC  
AAGCCTATGGAAGGCATAACGGACTCTCTGCATTGCTTGTAAAAGACCCTCTAGTGAACAAGTGAGA  
CTTTGGATTCTGAATCAGAAACTACAAACCATCAACATCTTACACATGAGGGGCCATGGAAAGTACCAC  
CCTGCAGATTAGCAAGCCACCGAGACCCAGAGCGAAGACTTCTTTCTTGCTCCAGTCCAGACTAAAGTT  
CCCCTAACTGAGGACAAAGCAATGCCTGGGGTTATGCAGAATGTCCAAAAGAAGAACAAGCTCCCCGA  
TGCTTGGCTCCCAGGAAGGACACTTGGTAGAAGAGGTCATCTTAAGGCAAAGGCAGAAGCAGGCCAGCC  
AGGCCATGTGGTTGAGCTACAGCTGTCCCTCTCAAAGGAAAGACATCAATGCACCAGTGGCCCTATAGTG  
ACTCTCCAGGGAATGACAAATCCACGTCTCCAGACCCAGACTGGAGCTCACAACCGAGAGGACTGTCC  
ACATAAATTCGATCCCTGCTCCTGAGAAAGCAGACACTTCTCTGACGTCCAGCACCTCCAGTGGCCGAGA  
GTTGAGAGTGATCCAGGGAAGAGACCCAGGAGGCGCAGGGCTGCCCCAGGTGGAAGTGATTCTAGATTGC  
TCTGACAGGCTGAAGGCTGAAGAGTGCAGGCTGCAGACAGGAAGGGGGTGTGTGGCTTCTCCCGTGGAA  
GAGGGCGGTGAGAAGCACCTCTCTCTGGTCTCCTTTGCGGTCTCGTCAGAAGGCACCGACCGGAGA  
AGATCAACGCTCGGAAAAGGATCAGAGCAGACCACACAAGCACCGTGCACGCCATGCTCGCTCAGGAGG  
AGTGAAAGTCTATCTGAAAAGCAAGTGAAGAAGCAAAGTCTAAGTGCAAAGCATCGCCCTCTCTCTAA  
CGGATGCTCCCAACCAAACTCCAAGGGGTGTTGATGTTAAGAAGCGGAGGCGGAGGGCCCGGAAGTA  
CACCTAGTCAGTTACGGTACTGGCAGCTTGAGCGAGAGGAGGAGGAGGAGGACCAGGAAGCAGGT  
GACAAGGACGAGATAAGTGAGGTTGCATTTCTTGAACCAAGTGTGAACTTTGATTGGGATTCTGGACTGGTGGACATTGAAAAGAG  
CTGACGTTGACGACAACCCAAGTTGTGAACCTTTGATTGGGATTCTGGACTGGTGGACATTGAAAAGAG  
ACTCAACCGAGGGGACAAGATGGAATGTTGCCAGACACCACAGGCAAGGAGCGCTCATGTTTGCCAAG



[View online »](#)

AGGAGAGAGAGGATGGAACAGTTCACAGCCAAAAATGAAGAGGAGAAGACGGGTGGGATGGCAGGTGGAG  
GACCGGATGCCCTGCAGACGGATGGTCTGAGAACCATGACTTCTTATCAGCGAAAAGAAGAATCGGTAAAG  
AATGCAGAGCTCTGTGAGCGAAAGTTCTTCCAGATGGGACGCAGTCTTGCCAGTGTGCCACAACAGAAT  
GGCTTCAGTGGAGTGTGACAGACAGCAGGGGCCAGAGGATGTTCCCTATGAATAGAACCGCCAAACCTT  
TCCTGGGATCTATGAACCAGCCAGCAGCACCATTCTCCCCAACCGGAGTGTGACAAGTCCCATCTCTGA  
CCAGTGGCTGGCCAGCACAGCCCCCTCATGGCCCCAGCCTGCTCCGTGGTCAACAACAGCCTTCTATG  
ATTCATCTGAACAAATAGCTTCCCGCATGAGAGAATCGCAGTGCCGGCCAAAAGAACGGGAATACTGCA  
GGAAGCCAAAAGACGAGGCACAACAAAACCCATGTTTACTTTCAAAGAAAACCAAAGTAAGCCCCAACCCC  
GAACTCTGTCACTTCTTCAAAATGCAGAAGGCAAGCAGGCACTGGAGGGGACTCTGGGCCGAAGAAG  
ACTACCTCAGTTTAGGCGCAGAGGCTTGTAACTTCATGCAGAGTCTGCCAAAACAAAAGACCCACCTCC  
TGTCGCTCAAAGCCTGCAGTCAAGTCCCCCTTCTCTCCAACCGGTAGCCCCAGTTTCTCCAGTCTGG  
TCTCCAGGAGTGGCTCCAGCCAGCGTCTGCCTTCTCCACATCAAATCCACCGAACCCACCACAGGTCA  
CTGCTGTCTCCTCATCAAATAGCTCAGCCTGCCGCCCTCCTGCCCGCCCGGAGTGCCTGAACTT  
GGCTGGTCTTTCAAAGTCCCCAAGCAGTAGTGGTCACTAATACTACAGCCCAAGCCATCAGCACCC  
ACACCATTAGTAAATGCTGCTCCTGCTGGTGCAGGGGACCATCCAATGAGCTTCTGGAATGAGTGGGA  
AAGGAGCCAACTCTTCGCTAAAAGGCAGTCTAGGATGGAGAAGTATGTGGTAGATTCCGACACAGTGA  
GGCCACACAGTTCGGGCCAGTCTCCCACTCCATCCCTGCCCGCCAGTTGGAAGTACTCTCCAACGTC  
CGAGCACCCCCGCGCGTGGCCTACAATCCTATCCATTCCCCCTTACCCTGGCTGCTATCAAGTCTC  
AACCACCGGTGCCAGGCTTCCAAAACGAGCAAGAAAAGGGCAAGAAACCTCTTAACACTTTGGATGT  
CATGAAGCACCAACCGTATCAGCTCAACGCGTCTTTGTTACCTTTCAACCCCTGATTCAAAGGATGGC  
CTCCCTCAGAAGTCAACAGTCAAGTCAAGTTCAGCCCCGGCCATGAAGCAAGCCCTCCCTCCCCGGCAGG  
CGAATGTTGGGTCTCCCAAAATGCGCAGGCTTCTTCTGTGTACTCGGTACCAGTTATACCTCTCAGCC  
CAACTTCTTTGCCGCGGAGGCCACTTCAACCGTCAAGCATCCCCGGTGCCTGTGAGTGTCCCCACCTCT  
CCAAAGCAAGAATCGACCTCCACATCCTATTTTGTGGCTCCAAGGCCGAAGTCTCAGCCAAGAAAAGTG  
GGGTACAGTTCAGGAGAACGGGCGCTCCCTTTCTCTCCCTGGAAGATCGGCCCGCCCATATTCTGTC  
ATCTCCCTGGCTGTACCAGTCTGCTTGAATTACTCCAGCAAACCAACCTTCGAGCTGGAGAAAGCTAAC  
AAGAGACCGACACCTTGGGAAGCAGCAGCCAGTCCCCTCTCGGTCTAGTGGATGACGCCTTCAGACCTA  
GGAACATCCAGGAATCCATCGTGGCACATGTAGTCTCCGAGCTCGGAGGAAGGTGTCTCCAGGGTCCCA  
AGAGGACTGAAAAGAGAGACTGCTTTTGTCCCTCAAACCTCAGAAGACCAACATGAGCTTTTCGAAAGG  
CAAGAGTATCCTGCCCGTCCCCAGTCAACAGCCATGTGTCTAGCCACTCCTTATATAGTCCCAGTTGC  
CATATGTGTGTTATAGGCAGGAGTCCAGAAATGATTTGAAAACGATGTCCATGGAGACTAGGTCTGAATA  
TTGCTTCCATTGGGTGTTATGACTATAACCCACACCCAAGGGGTGGAGACAACAACC

AGCGGACCGACGCGTACGCGGCCGCTCGAG - GFP Tag - GTTTAA

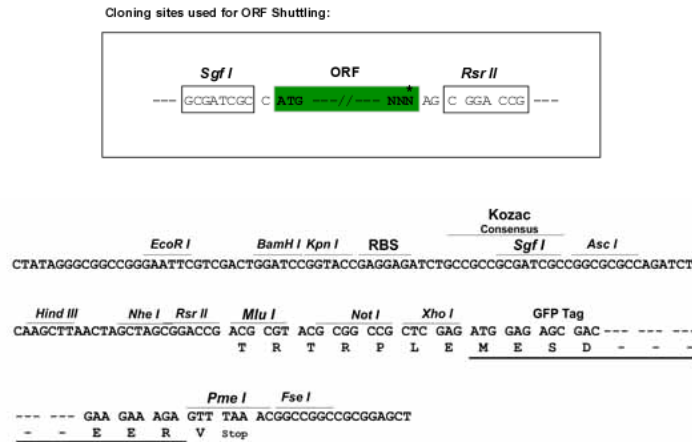
Protein Sequence: >MG216266 representing NM\_080451  
 Red=Cloning site Green=Tags(s)

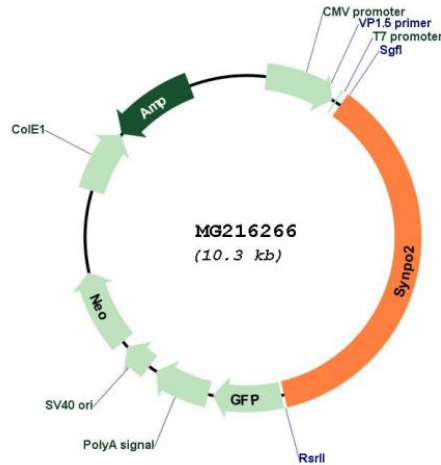
MGTGDFICISMTGGAPWGFRLQGGKEEQQLQVAKIRSQSKASGSLREGDEVVSINGNPCADLTYPEVI  
 KPMEGITDSLHLLVKRPSSGTSETLDSESETTNHQHLTHEGPMESTTLQIQATETQSEDFFLAPVQTKV  
 PLTEDQSNAWGYAECPKKEEQAPPMLGSQEGHLEEVILRQKAEAGQPGHVVELQLSLSKERHQCTSGPIV  
 TLQGNKSTSPDPDWSSQLERTVHINSIPAPEKADTSLTSTSSGRELRVIQGRDPGGAGLPQVEVILDC  
 SDRLKAEECLQTGRGCVASPVEGGRSEAPPSLVSFVVSSEGEHGEDQRSGKDQSRPHKHRARHARLRR  
 SESLSEKQVKEAKSKCKSIALLLTDAPNPNSKGVLMFKKRRRRARKYTLVSYGTGELEREEEEEDQEAG  
 DKDEISEVAFLGTSESEVDEELLSDVDDNTQVVNFDWDSGLVDIEKRLNRGDKMEMLPD TTGKGALMFAK  
 RRERMEQFTAQNEEEKTGGMAGGPDALQTDGLRTMTSYQRKEESVRMQSSVSESSFQMGRLASVPPQN  
 GFSGVSETAGAQRMFPMNRTAKPFLGSMNQPAAPFSPTRSVTSPISDFPAPPYSAVSPPEAFSRGVSS  
 PVAGPAQPPWPQPAPWSQPAFYDSSEQIASRDERIAVPAKRTGILQEAKRRGTTKPMFTFKETKVSNP  
 ELLSLLQNAEGKRGTTGGDSGPEEDYLSLGAECNFMQSSAKQKTPPPVAPKPAVKSPSSSQPVAVSPVW  
 SPGVAPAQRPAFSTSNPNPPQVAVSSIKIAQPAAPPARPASALNLAGPFKGPQAVVVSHNYTPKPSAP  
 TPLVNAAPAGAGGPSNELPGMSGKGAQLFAKRQSRMEKYVVDSDTVQAHTVRAQSPTPSLPASWKYSSNV  
 RAPPVAYNPIHSPSYPLAAIKSQPPGAQASKTSKKKGGKPLNTLDVMKHQPYQLNASLFTFQPPDSKDG  
 LPQKSTVKVSSAPAMKQALPPRQANVGSPTNAQASSVYSVPAYTSQPNFFAAEATSPVSAVSPVSVPTS  
 PKQESTSTSYFVAPRPKFSAKKSGVTVQENGRSLSLPGRSAPPIISASPWLYQSACNYSSKPTFELEKAN  
 KRPTPWEEAARSPLGLVDDAFRPRNIQESIVAHVVSAAARKVSPGSQEDWKERLSFVPTQKTNMFSER  
 QEYPAPSPVNSHVSSHSLYSSQLPYVCYRQESRNDLKTMSMETRSEYCLPLGGYDYNPHPRGWRQQP

SGPTRRRLE - GFP Tag - V

Restriction Sites: SgfI-RsrII

Cloning Scheme:



**Plasmid Map:**


**ACCN:** NM\_080451

**ORF Size:** 3771 bp

**OTI Disclaimer:** The molecular sequence of this clone aligns with the gene accession number as a point of reference only. However, individual transcript sequences of the same gene can differ through naturally occurring variations (e.g. polymorphisms), each with its own valid existence. This clone is substantially in agreement with the reference, but a complete review of all prevailing variants is recommended prior to use. [More info](#)

**OTI Annotation:** This clone was engineered to express the complete ORF with an expression tag. Expression varies depending on the nature of the gene.

**Components:** The ORF clone is ion-exchange column purified and shipped in a 2D barcoded Matrix tube containing 10ug of transfection-ready, dried plasmid DNA (reconstitute with 100 ul of water).

**Reconstitution Method:**

1. Centrifuge at 5,000xg for 5min.
2. Carefully open the tube and add 100ul of sterile water to dissolve the DNA.
3. Close the tube and incubate for 10 minutes at room temperature.
4. Briefly vortex the tube and then do a quick spin (less than 5000xg) to concentrate the liquid at the bottom.
5. Store the suspended plasmid at -20°C. The DNA is stable for at least one year from date of shipping when stored at -20°C.

**RefSeq:** [NM\\_080451.2](#), [NP\\_536699.2](#)

**RefSeq Size:** 7116 bp

**RefSeq ORF:** 3774 bp

**Locus ID:** 118449

**Cytogenetics:** 3 G1