

## Product datasheet for **MG216260**

### **Poli (NM\_011972) Mouse Tagged ORF Clone**

#### **Product data:**

Product Type:	Expression Plasmids
Product Name:	Poli (NM_011972) Mouse Tagged ORF Clone
Tag:	TurboGFP
Symbol:	Poli
Synonyms:	Rad30b
Mammalian Cell Selection:	Neomycin
Vector:	pCMV6-AC-GFP (PS100010)
E. coli Selection:	Ampicillin (100 ug/mL)



[View online »](#)

**ORF Nucleotide Sequence:**

>MG216260 representing NM\_011972  
 Red=Cloning site Blue=ORF Green=Tags(s)

TTTTGTAATACGACTCACTATAGGGCGGCCGGGAATTCGTCGACTGGATCCGGTACCGAGGAGATCTGCC  
 GCC**CGCATCGCC**

ATGGGGTGGAGTCGGAGGAGGAAGGCGGCCCGCGGAGGAAGAAGACGCTCCTCGTGCCATGGAGCCCT  
 TGCACGCGGGGGCGGCGGCAGCTCGCGGCAGTTTGCAGTCAAGGGCCACCTACACAAATCTCTTCGTC  
 GAGAGTCATAGTCCACGTAGATCTGGATTGCTTTTATGCCAGGTCGAAATGATCTCCAACCCAGAATTA  
 AAGGACAGACCTTTAGGTGTGCAACAGAAATACTTGGTGGTTACCTGCAACTATGAAGCCAGGAACTGG  
 GTGTGAGGAAGCTTATGAATGTGAGAGATGCGAAGGAAAAGTGTCTCAGCTGGTCTCGTGAACGGAGA  
 AGACCTGAGCCGCTACAGAGAGATGTCTATAAGGTACAGAAATGTTGGAGGAATTTAGTCCAGCTGTT  
 GAGAGACTTGGATTTGATGAAAATTTTGGATCTAACAGAAATGGTGGAAAAAAGACTCCAGCAGCTTC  
 CAAGTGAGGAGGTTCCGTCAGTACTGTGTTTCGGCCATGTTTACAATAACCAAGTCTGTGAACCTACACAA  
 CATCATGCATCGGAGACTTGTGGTTGGATCGCAGATTGCAGCAGAGATGCGGGAAGCCATGTATAATCAG  
 CTCGGGCTCACAGGCTGCGCCGGAGTGGCTCCTAATAAACTCTTGCCAAAGTTAGTGTCTGGGGTTTTTA  
 AACCAATCAGCAGACGGTCTTACTACCTGAAAGTTGTCAACATCTCATTACAGTTTGAACCACATAAA  
 GGAAATTCCTGGTATCGCTATAAACTGCCAAGCGTCTCGAAGTTCTGGGAATCAATAGTTCATGAT  
 CTCCAACCTTTCCAATCAAACATTAGAAAAAGAATTAGGAATTGCAATTGCTCAGCGTATCCAGCAGC  
 TCAGTTTTGGAGAGGACAAGTCTCCCGTCACACCGTCAGGGCCACCACAGTCTTTAGTGAAGAAGATAC  
 GTTTAAAAAGTGTCTCAGAAGTGAAGCTAAGCTAAGATTGAAGAATTACTTTCCAGCCTTTTGACC  
 AGAGTATGCCAGGATGGAAGGAAGCCCCATACAGTAAGATTAGTCATCCGTCGGTACTCTGACAAACACT  
 GTAATCGAGAGAGTCGTGAGTCCCTATCCCATCCACGTCATTACAGAAGTTAGGACAGGAAATCATGA  
 CTCATGCCTCCCTGATTGATATCCTTATGAACTTTTCCGAAATATGGTGAACGTGAAGATGCCCTTT  
 CACCTGACTCTTATGAGCGTGTGCTTCTGCAACCTGAAAGCCCTGAGCAGTGCTAAGAAAGGCCTATGG  
 ACTGCTACCTAACGTCCCTCTCAACCCCTGCCTACACCGACAAGCGCGCCTTTAAAGTGAAGGACACCCA  
 CACGGAAGACTCTACAAGGAGAAAGAAGCAAACCTGGGATTGTCTACCAAGTAGAAGATCGAAAGCACA  
 GGAACGGGGGAGTCTCGGTTGGATGCCACCTGTTTTCTAAAGAAAAAGACACAAGTACTTGCCTCC  
 AGGCACTGCCAGAGGGTGTGATCAAGAAGTCTTAAAGCAACTCCAGCAGATATCAAGAAGAAATCCT  
 TTCTGGAAATCTAGAGAAAATCTAAAAGGAAAGGAAGTTTAAAGTTGTCCGCTGCATGCCTCTAGAGGA  
 GTATTGTCTTTCTTTCTACAAAGCAAATGCAAGCCAGTCGCTTAAAGCCAGAGATACTGCGCTCCCTA  
 GCAAGCGGTATCAGCTGCATCTCCCTGTGAGCCGGGAACGTGAGACTGAGCCCGGGAGCACCTCCCA  
 TCCATCGTGGGAAAGGACTGTTCTATTACATAGACAGCCAGTTAAAGGATGAGCAAACGAGTCAAGGC  
 CCTACTGAGTCTCAAGGATGCCAGTTTTCCAGCACGAACCTGCTGTTTCTGGTTTCCATTCCTTTCCCTA  
 ATCTGCAGACTGAACAGCTCTTCTCCACACATCGCACTGTAGACAGCCACAAGCAGACAGCCACCGCCTC  
 TCACCAGGACTAGAAAGTCAACAGGGACTAGAAAGCAGAGAGCTGGATTCTGCGGAAAGAAAAGCTTCT  
 TTCCCACCAGACATTGATCCGCAAGTTTCTATGAGCTTCCAGAAGAGGTCCAAAAGGAAGTATGGCGG  
 AATGGGAGAGAGCTGGAGCTGCGCGCCCTCGGCGCACAGA

**ACGCGTACGCGGCCGCTCGAG** - GFP Tag - GTTTAA

**Protein Sequence:** >MG216260 representing NM\_011972  
 Red=Cloning site Green=Tags(s)

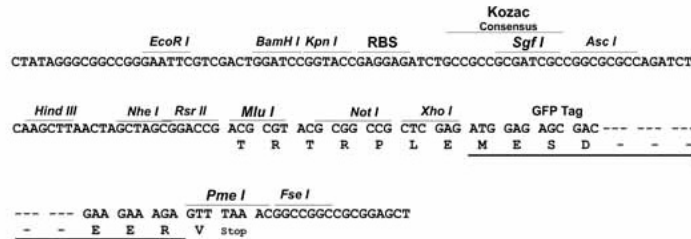
MGVESEEEGGPAEEEDAPRAMEPLHAGAAGSSRAVCSQGPPTQISSSRVIVHVDLDCFYAQVEMISNPEL  
 KDRPLGVQKYL VVTCNYEARLKGVRKLMNVRDAKEKCPQLVL VNGEDL SRYREMSYKVTELEEF SPAV  
 ERLGFDEFVLDL TEMVEKRLQQLPSEEVP SVTVFGHVYNNQSVNLHNIHRRLLVGSQIAAEMREAMYNQ  
 LGLTGCAGVAPNKLLAKLVSGVFKPNQQT VLLPESCQHLIHSLNHIKEIPGIGYKTAKRLEVLGINSVHD  
 LQTFPIKTLEKELGIAIAQRIQQLSFGEDKSPVTPSGPPQSFSEEDTFKKCSSEVEAKAKIEELLSSLLT  
 RVCQDGRKPHTVRLVIRRYSDKHNCRESRQCPIPSHVIQKLG TGNHDSMPPLIDILMKLFRNMVNVKMPF  
 HLTLMVCF CNL KALSSAKGPMDCYL TSLSTPAYTDKRAFVKVDTHTEDSHKEKEANWDCLPSRRIEST  
 GTGESPLDATCFPKEDTSDLPLQALPEGVDQEVFKQLPADIQEEILSGKSRENKKGKGLSCPLHASRG  
 VLSFFSTKQMQASRLSPRDTALPSKRVAASPCEPGTSGLSPGSTSHPSCGKDCSYYIDSQLKDEQTSQG  
 PTESQGCQFSSTNPAVSGFHSFPNLQTEQLFSTHRTVDSHKQTATASHQGLESHQGLSRELDSAEELKLP  
 FPPDIDPQVFYELPEEVQKELMAEWERAGAARPSAHR

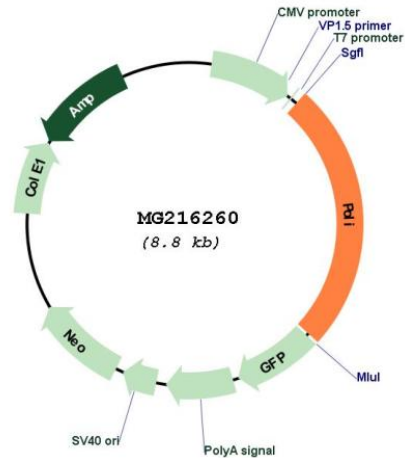
TRTRPLE - GFP Tag - V

**Restriction Sites:** SgfI-MluI

**Cloning Scheme:**

Cloning sites used for ORF Shutting:



**Plasmid Map:**


**ACCN:** NM\_011972

**ORF Size:** 2211 bp

**OTI Disclaimer:** The molecular sequence of this clone aligns with the gene accession number as a point of reference only. However, individual transcript sequences of the same gene can differ through naturally occurring variations (e.g. polymorphisms), each with its own valid existence. This clone is substantially in agreement with the reference, but a complete review of all prevailing variants is recommended prior to use. [More info](#)

**OTI Annotation:** This clone was engineered to express the complete ORF with an expression tag. Expression varies depending on the nature of the gene.

**Components:** The ORF clone is ion-exchange column purified and shipped in a 2D barcoded Matrix tube containing 10ug of transfection-ready, dried plasmid DNA (reconstitute with 100 ul of water).

**Reconstitution Method:**

1. Centrifuge at 5,000xg for 5min.
2. Carefully open the tube and add 100ul of sterile water to dissolve the DNA.
3. Close the tube and incubate for 10 minutes at room temperature.
4. Briefly vortex the tube and then do a quick spin (less than 5000xg) to concentrate the liquid at the bottom.
5. Store the suspended plasmid at -20°C. The DNA is stable for at least one year from date of shipping when stored at -20°C.

**RefSeq:** [NM\\_011972.2](#), [NP\\_036102.2](#)

**RefSeq Size:** 2482 bp

**RefSeq ORF:** 2214 bp

**Locus ID:** 26447

**Cytogenetics:** 18 E2

**Gene Summary:** Error-prone DNA polymerase specifically involved in DNA repair. Plays an important role in translesion synthesis, where the normal high-fidelity DNA polymerases cannot proceed and DNA synthesis stalls. Favors Hoogsteen base-pairing in the active site. Inserts the correct base with high-fidelity opposite an adenosine template. Exhibits low fidelity and efficiency opposite a thymidine template, where it will preferentially insert guanosine. May play a role in hypermutation of immunoglobulin genes. Forms a Schiff base with 5'-deoxyribose phosphate at abasic sites, but may not have lyase activity (By similarity).[UniProtKB/Swiss-Prot Function]