

Product datasheet for **MG216244**

Sash1 (NM_175155) Mouse Tagged ORF Clone

Product data:

Product Type:	Expression Plasmids
Tag:	TurboGFP
Symbol:	Sash1
Synonyms:	1100001C18Rik; 2500002E12Rik; A330076K04Rik; mKIAA0790
Mammalian Cell Selection:	Neomycin
Vector:	pCMV6-AC-GFP (PS100010)
E. coli Selection:	Ampicillin (100 ug/mL)

ORF Nucleotide Sequence: >MG216244 representing NM_175155
Red=Cloning site Blue=ORF Green=Tags(s)

TTTTGTAATACGACTACTATAGGGCGGCCGGGAATTCGTGACTGGATCCGGTACCGAGGAGATCTGCC
GCCCGGATCGCC

ATGGAGGAGGACGCGGGAGCTGCTAGCCCAGCGCCGGAGCCTGAGCCGGAGGTGGATCCCGCCCGGGAGC
TGGAGCCCGAGGCCGGTGTCTCCGAGTCAATCTCCCGCCTCTGGACCGACGTGATGGGCATCCTGGATGG
TTCCCTGGGAAACATTGATGACCTGGCACAGCAGTATGCAGATTATTACAATACCTGCTTTTCTGACGTG
TGTGAGCGGATGGAGGAGCTCCGAAACGGCCGTTTCCAGGACCTGGATGTGGAGAAACCCGACGCCA
GCCCCACGTCACTTCAGCTGCGGTCCAGATCGAAGAGTCTCTAGGCTTCTGCAGCGCCGTGTCAACACC
AGAAGTGAAAAGAAAGTACCCTCTCCATAAATCAAAGTCTCAGAAAGAGGCTGTGTAGGCAAAGGAGATTGG
AAGAAGAAAAATAAATACTTCTGGCAGAATTTCCGAAAGAACAAAAAGGAATAATGAGACAGACTTCAA
AAGGAGAAGATGTGGGCTATGTAGCCAGCGAGATTACGATGAGTGACGAGGAGCGGATTACGCTGATGAT
GATGGTCAAGGAGAAAAATGATCACCATTGAAGAAGCGCTCGCCAGGCTGAAGGAATACGAGGCCACGAC
CGTCAGTCAATCCACTTGGACCCCGCAGACTGGCCGATGGCTCCTACCCGACATTGGATGGCTCCTCCA
CCTGCAACTCAAGAGAGCAGTCGGATGATGAGACAGAGGACTCGGTGAAGTTTAAAGAGTTGCACAAGCT
GGTAAACTCTACTCGAAGAGTCAGAAAGAACTAATTAGGGTGAAGAAATGAAAAAGCCAGCAGACAGAA
GGTGGAGAGGAACATGATTTTGAGAATTCAGTCCAGTCCAAGATGAAAGATCTGCACTACTCTGGAGTGC
ACAAAAAGCCATTTTTCTATGATGGCTCTCCTGAGAACTCCAGAAGATGATGCAGACTCTCTACCCC
ATCTCCATCATCCAGCAGCCTGGATACGTGGGAGCTGGCCGGAAGTTGGTCAAACCTTCAGCAAAGGA
GAGAGTCGGGGCTGATTAAGCCCCCTAAGAAGATGGGACATTCTCTCTATCCAGAAGAAGAGAAGG
CCCAGAAAGTGTCCCGCTCCCTCACAGAGGGGAAATGAAGAAAGTCTTGGGTCTTTGAGTCACGGGAG
AACCTGCAGTTTTGGTGGATTGACCTGACAAACCGTTCTCTGCATGTTGGCAGTAATAATTCTGACCT
GCGGGTAAAGAGGGAGATTTTGTGTACAAAGAAGTCAATAATCCCTCCTGCCCCCGCATCTCTCTCG
GGAAAAAGGTGAGATCAGTGAAGAGACCATGAGGAAGAGGATGTCTAAAAAGTACAGCAGCCCGGTCTC
AGAGCAGGACTCGGGCTCGATGGAATGCCAGCTCCCCGCTCAGAAAGCCTGACTCCGAACACGTG
GACAAGCCTAAGCTCAAAGCCGGGGCTCTGTGAAAGCCTTCGGAGTTCTCTGAGTGGCCAGAGCTCAA



TGAGTGGTCAGACAGTGAACCACTGATTCCCTCCACCAGCAACCGGGAGAGTGTCAAGTCAGAAGATGG
GGATGACGAAGAGCCACCCTATCGGGGTCCTTCTGTGGGCGTGCCCGAGTGCACACTGACTTCACCCCC
AGTCCCTATGACACGGACTCTCTGAAGCTCAAGAAAGGAGATATCATTGACATAATTAGCAAACCCCA
TGGGTACCTGGATGGGCTGCTGAACAACAAAGTCGGCACGTTCAAGTTCATCTACGTGGATGTGCTAAA
TGAGGAAGAGGAGAAGCCAAAGCGCCTACCAGGAGGAGGAAGAAGGGAAGACCATCTCAGCCGAAGTCT
GTGGAGGATCTCCTGGACCGGATCAACCTGAAAGAACACATGCCACCTTCTGTTCATGGCTATGAAG
ACCTGGACACCTTCAAACCTCCTGGAGGAAGAAGACTTAGATGAATATAATCAGGGACCCAGAACACAG
AGCAGTTCTTCTGACTGCGGTGGAGCTGTTGCAGGAATATGACAGTAACAGTGACCAGTCCGGTTCTCAG
GAAAAGCTGCTGGTGGACAACCAAGGCTGAGTGGACGATCCCCACGAGACTCCGGATGCTACGAAAGCA
GCGAGAAGTTGGAAAACGCCAAAACACAAAACCCAGCGTCTGTCTACCAAGTCGTCCACGGAGTCCAA
CTTAAAGTCTTTCACCAAGGAGTCAGCCAGGCAACTACCCGACATTGCCTTAAATGAAATCAGGGGAGGTG
CGCAAGCAGGGAGAGGAGGGCAGGCTGGGACGAGGTCTAGCCCGGACACTGCCAAGAGCTGTGACGTGC
CCTCTGTGACTGATTTGAGTAAAAACCAAGGAGCCTCCCGTCTCCATCTGTGCGAGCTGTGAAACCT
GGAGGGTCTGAGCCTGTGAAAGTTGGCCCCGATCCCATTCCTGGATGACCTTCAGGGAGATGCTGAT
GTTGGCAAGATGTGCTACCGAGATGCCAGAACTGTTCTCAGAATGTACCAGAAGTGCCGCAAGA
CGTCTGCCTGCACCTCCAAGGCTCTGCCACGAGGCCGAGATCCACAGCAGATGTGATGCTTCTGACCCA
AAGCAAGAGATTTCCGACCCCGAAAACAATGGCTAAGAACTGGATGGCTCCGTGGTGGCTCCAAC
CTTGGGATAGCTCCTCCTCAGTGTATACCCAGAGATTCGAGGCCAGCCGCCTGTTAAACCCGGCTTAA
CAAGGACGTCTCTTGGGGTCTCAGAAAAGGACATGATCACCACCCCTGGGCACCAAGAAGGGGTAGA
CGGGGAGCAGAGCGCCCTGAGACCAGGACACAGTCCCGACATCCGTGCGAGCCCTCCTGTGCCAGCC
AAGAAAAGCCGAGAGCGCTGGCCAATGGCTGCACTTGGTCCCCAGCCAGAGGCACCCATCCTGCCAC
TGAAGAAAGCCAGCCCTGCCAGCCAGTCACTCCAGCAGTGCCTCTCCCCGGAAACCCAGGCTTC
CTCCGGACTGAGCCGGCAGCCAGCCTGTACGAGACCTCCACCTGGCTGGCTGAGCTGCCGAGAGC
ACTAGCCTGCAGGAGCATGGTGTGAAACTGGGCCAGTGTGAGCAGGAAGTTTCTGTGTCGGGGTG
TGGACCTAGAGATGCTCAGGAGAACAAGCTGCAGGCGGAGGGCATTGATCTACTGAGGAGCCCTACTC
TGATAAGCATGGCCGTTGTGGGATCCCGAAGCCCTGGTACAGAGATACGCAGAGGACCTAGAGCAGCCT
GAGAGGGATGTTGCCACCAACATGGACCAGATCCGGGTGAAGCTGCTTCGGAAGCAACATCGGATGGCA
TCCCGAGTGGTGGGCTGACGAAATCTGCAGAAAAGCCCTCTCTCCCGGCTGTGTTGCGTCCATGTCGGA
TTGGCTCATCTCTATCGGCTGCCATGTACACGAGCACCCCTTCTGACGAGGGTTCAGCACGCTGAGC
CAAGTGCCTCCCTGTCCACTCTTGCCTCAGGAGGCCGCATCACCGAGGAGAGACATAAAGGAAAC
TCATAACGGCAGCAGACTCTCAAACCTGCCACCAAGCCCTGAGGCTATG

ACGCGTACGCGGCCGCTCGAG - GFP Tag - GTTAA

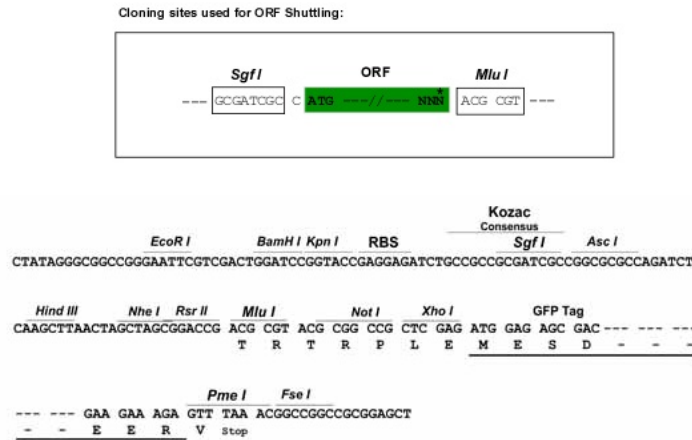
Protein Sequence: >MG216244 representing NM_175155
 Red=Cloning site Green=Tags(s)

MEEDAGAASPAPEPEPEVDPARELEPEAGVSEISRLWTDVMGILDGSLGNIDDLAQYADYYNTCFSDV
 CERMEELRKRVSQDLVEKPDASPTSLQLRSQIEESLGFCSAVSTPEVERKYPLHKSNSDGDGCVKGDW
 KKKNKYFWQNFNRKNQKIMRQTSKGEDVGYVASEITMSDEERIQLMMVKEKMITIEEALARLKEYEAQH
 RQSSSTLDPADWPDGSYPTLDGSSTCNSREQSDDEEDSVKFKRLHKL VNSTRVRKKLIRVEEMKKPSTE
 GGEEHVFENSPVQDERSALYSGVHKKPFFYDGSPEKPPEDDADSL TSPSSSSLDTWAGRKL VKTFSKG
 ESRGLIKPKKMGTFFSYP EEKAQKVSRSLTEGEMKKGLGSLSHGRTCSFGGFDLTNRSLHVGSNNSDP
 AGKEGDFVYKEVIKSPAPRISL GKKVRSVKETMRKRMSKKYSSPVEQDSDLGMPSSPASGKPDSEHV
 DKPKLKAGGSVESLRSSL SGQSSMSGQTVSTTDSSTSNRESVKSEDDDEEPPYRGPF CGRARVHTDFTP
 SPYDSDLKLLKGGDI IDII SKPPMGTWMLLNKVGTFKFIYVDVLENEEEKPKRPTRRRKKGRPSQPKS
 VEDLLDRINLKEHMPFTLFNGYEDLDTFKLLEEDLDELNIRDPEHRAVLLTAVELLQEYDSNSDQSGSQ
 EKLLVDNQGLSGRSPRDSGCYESSLENENAKTHKPSVLSTKSSTESNLKSFTRSQPGNYPTLPLMKSGEV
 RKQGEERLGRGLAPDTAKSCDVPSVTDL SKNRRSLPVSICRSCTLEGPEPVE SWPRSHSLDDLQGDAD
 VGKNVPTPEMPTCSQNVPEVPQKTSACTSKALPRGRDPTADVMLL TQSKRFSDPPKTMAKKLDGSVVASN
 LGIAPPQCI PRDFAQPPVKPGL TRTSLEGLRKGDHHLPLGTEGVDGEQSAPETRTRQSRHPSQPPPVA
 KKSRLRANGLHLVPSPEA I LPLKASPSPVSDCPSPREPRSSGTEPGSPACTRPPWLAELPES
 TSLQEHGVLGPVLSRKVSCVRGVDLEMLTENKLAEGIDLTEEPYSDKHGRCG IPEALVQRYAEDLEQP
 ERDVATNMDQIRVKLLRKQHRMAIPSGGLTEICRKPLSPGCVASMSDWLISIGLPMYTSTLSDAGFSTLS
 QVPSLSHSLQEAGITEERHIRKLI TAARL FKLPPSPEAM

TRTRPLE - GFP Tag - V

Restriction Sites: SgfI-MluI

Cloning Scheme:

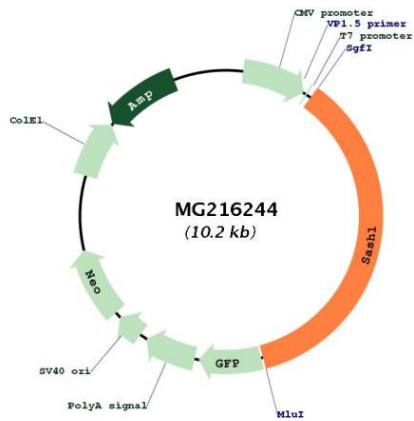


ACCN: NM_175155

ORF Size: 3690 bp

OTI Disclaimer:	The molecular sequence of this clone aligns with the gene accession number as a point of reference only. However, individual transcript sequences of the same gene can differ through naturally occurring variations (e.g. polymorphisms), each with its own valid existence. This clone is substantially in agreement with the reference, but a complete review of all prevailing variants is recommended prior to use. More info
OTI Annotation:	This clone was engineered to express the complete ORF with an expression tag. Expression varies depending on the nature of the gene.
Components:	The ORF clone is ion-exchange column purified and shipped in a 2D barcoded Matrix tube containing 10ug of transfection-ready, dried plasmid DNA (reconstitute with 100 ul of water).
Reconstitution Method:	<ol style="list-style-type: none">1. Centrifuge at 5,000xg for 5min.2. Carefully open the tube and add 100ul of sterile water to dissolve the DNA.3. Close the tube and incubate for 10 minutes at room temperature.4. Briefly vortex the tube and then do a quick spin (less than 5000xg) to concentrate the liquid at the bottom.5. Store the suspended plasmid at -20°C. The DNA is stable for at least one year from date of shipping when stored at -20°C.
Note:	Plasmids are not sterile. For experiments where strict sterility is required, filtration with 0.22um filter is required.
RefSeq:	NM_175155.4 , NP_780364.3
RefSeq Size:	7183 bp
RefSeq ORF:	3693 bp
Locus ID:	70097
UniProt ID:	P59808
Cytogenetics:	10 A1
Gene Summary:	May have a role in a signaling pathway. Could act as a tumor suppressor.[UniProtKB/Swiss-Prot Function]

Product images:



Circular map for MG216244