

Product datasheet for **MG216238**

Arhgef6 (NM_152801) Mouse Tagged ORF Clone

Product data:

Product Type:	Expression Plasmids
Product Name:	Arhgef6 (NM_152801) Mouse Tagged ORF Clone
Tag:	TurboGFP
Symbol:	Arhgef6
Synonyms:	1600028C08Rik; 1700038J06Rik; 4930592P22Rik; alpha-PIX
Mammalian Cell Selection:	Neomycin
Vector:	pCMV6-AC-GFP (PS100010)
E. coli Selection:	Ampicillin (100 ug/mL)



[View online »](#)

ORF Nucleotide Sequence:

>MG216238 representing NM_152801
 Red=Cloning site Blue=ORF Green=Tags(s)

TTTTGTAATACGACTCACTATAGGGCGGCCGGAATTCGTGACTGGATCCGGTACCGAGGAGATCTGCC
 GCC**CGATCGCC**

ATGCAATCACGGATGTGGCTTAGTCTTACAGCTGCCCGAGAGCTGTTTCAGAGCGTCCGAGAGCCTCAG
 TCATGAATCCAGAAGAAGCCTTGTGACATGGCTTATATCTTTGGGAGTTCTAGAGTCTCCCAAAAAGAC
 TGCTGTGATCCAGAGGATTCTTGAAGTCTCGCTGAAAAATGGGGTAGTGTGTGCAAACTATAAAC
 AGACTTCTGCCTGGCTCGGTGGAGAAGTATTGTCTGGAACCCCAAAGTGAAGGCGACTGCATCGACAACA
 TCAATGACTTCTGAAAGGATGTGCAACTCTTCAAGTGAAGTGTGTTGAGCCTGATGACCTCTATTCGGG
 GGCAATTTCTCAAGTTCTGAATACTCTTTAGCTGTCAACAAAGCAACTGAAGATCAGCTCTCAGAA
 AGACCATGTGGAAGTCTCTTCTTCTTAGTGTGCGACCAGCTCTCAGACAAACCCGAGGTGGCCGTTCC
 CAGCACAGCTCCAGAGCAGCACAGCGAGGAAAAGGCAGAGATGACGGAAAATGGAAGTACCAGTTGAT
 AGTAAAGCAAGATTCAACTTCAAGCAGACGAATGAAGATGAATTGTCAGTGTGTAAGGGGACATCATT
 TATGTCACACGAGTTGAAGAAGGAGGCTGGTGGGAAGGCACATTAATGGGAGAAGTGGATGGTTCCCTA
 GTAATTATGTCGAGAAAATTAACCCAGTGAGAGACCTCTGTCCCTAAGGCTATCAAAGGATTTGACAC
 TGCTCCAATTACCAAGAATTACTACACTGTGGTGTACAGAACATCTTGACACTGAAAAAGAATATGCC
 AAAGAAGTTCAGTCTCTTCTTGTACTTACCTAAGACCCTTGAGTCTAATAACAACCTGAGTACTGTGG
 AGTTTACATGTTTATTGGGAACTTTGAAGAAGTATGCACATTTCAACAGACACTCTGCCAAGCCTTGG
 AGAATGTTCAAAGTTCCAGAAAACCAACAAAGTAGGAGGCTGCCTACTGAACCTCATGCCTCATTTCC
 AAATCGATGTACCTGGCTTACTGTGCAATCATCCATCAGCTGTCAACGTGCTCACCCAGCACAGTGATG
 ATCTAGAACGATTTCATGAAAAATCAAGTGCATCCAGCCCGGGTATCCTCATTCTAACAACAAGTCTCAG
 CAACCATTCATGCGACTGGAAAAGTATGTTACTCTTGAAGAAGTGGAAACGACATATGGAGGACACT
 CATCCAGACCATCAGGATATTCTGAAAGCAATCATAGCATTCAAAAACACTCATGGGGCAGTGTCAAGATC
 TGAGAAAGAGAAAAGCAGCTGGAATTGCAGATCCTTTCAGAACCTATTCAGGCATGGGAAGGAGATGATAT
 TAAGACTTTGGGAAATGTGATCTTTATGTCTCAAGTAGTGTGATGCAGCATGGGGCCTGTGAGGAGAAAG
 GAACGATATTTCTGCTGTTTTCAAGTGTCTTGATAATGTTGTCTGCAAGTCTCGGATGAGTGGCTTTA
 TGTATCAGGGAAAAATACCAATAGCAGGGATGGTAGTGAACAGATTGGATGAAATTAAGGCAGTGACTG
 TATGTTCAAATCACAGGTAGCACGTTGAGAGAATTGGTCCATTGCAACAATAACCAGGACTCCAG
 GAGTGGATGGAGCAGCTGAACAGACTGACCAAAGGACCAACCTCTGCGGTTTATTGTCTAAGACCTCCT
 CCTCATCATGTAGTACTATTCTTTAGCTCTACCGACAGCCCGAGGACCCTTGGAGCCTCCTCA
 AATTATAAAAACCGTGGAGTTAAGTTGCCTACGACCTGCACCTCACTTAGACCATCAGCAGCACTAGGT
 TATAAAGAGAGGATGTCTTATATCTTAAAGGAATCTAGTAAGAGCCCAAAAACAATGAAGAAGTTTCTTC
 ACAAAAAGAAAGACGGAGAGGAAAGCATCCGAGGAAGAATACGTGATTAGGAAAAGTACTGCTGCCCTGGA
 AGAGGATGCTCAGATTCTTAAGTGTATCGAAGCTTATTGCACCAGCGCCAGTTTTCAACAAGTACTCGT
 AAAGATTCTGTTCCACAAGTTCTACTCCCGAGGAAGAGAACTCATTATTGAAGAAACCAGAAGTAATG
 GGCAGACCATCATTGAAGAGAAGAGCCTTGTGATACTGTCTATGCCTTGAAGGATGAGGTCAAGGAACT
 GAAGCAGGAGAAATAAAAAATGAAGCAATGTCTGGAAGAAGAATTGAAGTCCGAGGAAGACCTAGAGAAG
 CTGGTCCGGAAGCTGTTGAAACAAACAGATGAATGCATTGATCTGAATCCAGCAGCAAGACCTCGATTC
 TCCAG

ACGCGTACGCGGCCGCTCGAG – GFP Tag – GTTTAA

Protein Sequence: >MG216238 representing NM_152801
 Red=Cloning site Green=Tags(s)

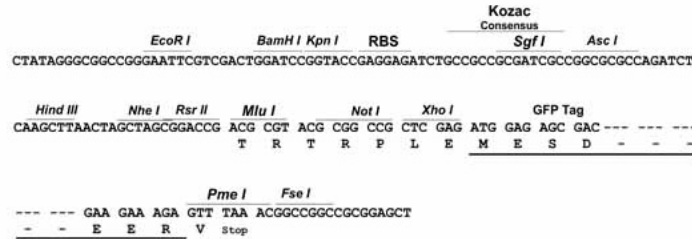
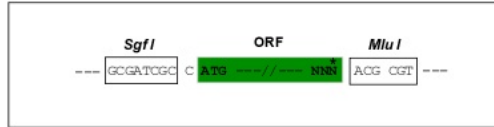
MQSRMWLSLHSCPESCSERPRASVMNPEERLVTWLISLGVLESPKKTVCDPEEFLKSSLKNGVVLCKLIN
 RLLPGSVEKYCLEPQTEADCIDNINDFLKGCATLQVEVFEPDDL YSGANFSKVLNTLLAVNKATEDQLSE
 RPCGRSSSLSAATSSQTNPOVAVPSTAPEQHSEEKAEMTENGSHQLIVKARFNFKQTNEDELSVCKGDII
 YVTRVEEGGWEGTLNGRTGWFP SNYVREIKPSE RPLSPKAIKGFDTAPLTKNYTVVLQNILDTEKEYA
 KELQSLLVTYLRPLQSNNNLSTVEFTCLLGNFEEVCTFQQTL CQALEECSKFPENQHKGGLLNLMPHF
 KSMYLAYCANHPSAVNVLTQHSDDLERFMENQGASSPGILILTTSLSKPFMRLEKYVTLLQELERHMEDT
 HPDHQDILKAI IAFKTLMGQCQDLRKRKQLELQILSEPIQAWEGDDIKTLGNVIFMSQVVMQHGACEEKE
 ERYFLLFSSVLI ML SASPRMSGFMYQGKIPIAGMVNRLDEIEGSDCMFEITGSTVERIVVHCNNNQDFQ
 EWMEQLNRLTKGPTSCGSLSKTSSSSCSTHSSFSTGQPRGLEPPQIIKPWSLSCLRPAPPLRPSAALG
 YKERMSYILKESKSPKTMKKFLHKRKTERRKASEEEYVIRKSTAALEEDAQILKVI EAYCTSASFQQGTR
 KDSVPQVLLPEEEKLII EETRSNGQTIIEEKSLVDTVYALKDEVKELKQENKMKMQCLEEELKSRKDLEK
 LVRKLLKQTDECIRSESSKTSILQ

TRTRPLE - GFP Tag - V

Restriction Sites: Sgfl-Mlul

Cloning Scheme:

Cloning sites used for ORF Shutting:



- ACCN:** NM_152801
- ORF Size:** 2385 bp
- OTI Disclaimer:** The molecular sequence of this clone aligns with the gene accession number as a point of reference only. However, individual transcript sequences of the same gene can differ through naturally occurring variations (e.g. polymorphisms), each with its own valid existence. This clone is substantially in agreement with the reference, but a complete review of all prevailing variants is recommended prior to use. [More info](#)
- OTI Annotation:** This clone was engineered to express the complete ORF with an expression tag. Expression varies depending on the nature of the gene.
- Components:** The ORF clone is ion-exchange column purified and shipped in a 2D barcoded Matrix tube containing 10ug of transfection-ready, dried plasmid DNA (reconstitute with 100 ul of water).

Reconstitution Method:

1. Centrifuge at 5,000xg for 5min.
2. Carefully open the tube and add 100ul of sterile water to dissolve the DNA.
3. Close the tube and incubate for 10 minutes at room temperature.
4. Briefly vortex the tube and then do a quick spin (less than 5000xg) to concentrate the liquid at the bottom.
5. Store the suspended plasmid at -20°C. The DNA is stable for at least one year from date of shipping when stored at -20°C.

RefSeq: [NM_152801.2](#), [NP_690014.2](#)

RefSeq Size: 4580 bp

RefSeq ORF: 2388 bp

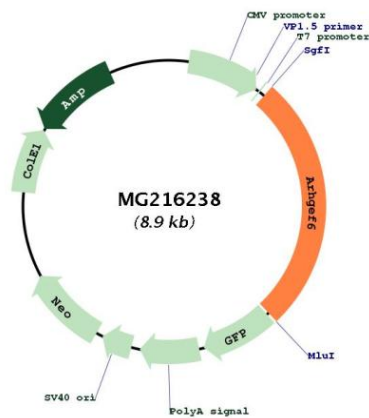
Locus ID: 73341

UniProt ID: [Q8K4I3](#)

Cytogenetics: X A6

Gene Summary: Acts as a RAC1 guanine nucleotide exchange factor (GEF).[UniProtKB/Swiss-Prot Function]

Product images:



Circular map for MG216238