

## Product datasheet for **MG216215**

### Tnrc6b (NM\_144812) Mouse Tagged ORF Clone

#### Product data:

Product Type:	Expression Plasmids
Tag:	TurboGFP
Symbol:	Tnrc6b
Synonyms:	2700090M07Rik; A730065C02Rik; AI848765; D230019K20Rik
Mammalian Cell Selection:	Neomycin
Vector:	pCMV6-AC-GFP (PS100010)
E. coli Selection:	Ampicillin (100 ug/mL)

**ORF Nucleotide Sequence:** >MG216215 representing NM\_144812  
Red=Cloning site Blue=ORF Green=Tags(s)

TTTTGTAATACGACTACTATAGGGCGCCGGGAATTCGTGACTGGATCCGGTACCGAGGAGATCTGCC  
GCCGCGATCGCC

ATGCAAACCAATGAGGGAGAAGTAGAGGAAGAAAGCAGCTCCAGGTGGAACAGGAGGATTTGTAAATGG  
AAGGGCATGGCAAGACTCCACCTCTGGAGAAGAAAGCAACAAGAGAAGGAGCAAGAAAGGGAAGAACA  
GTTAATGGAAGACAAGAAAAGGAAGAAAGAGGATAAAAAGAAAAAGAAGCCACCCAGAAAGTCCAGGAA  
CAAAAACCAAAGTGCCCGAAGTGACGAAACCAAGTTAAGCCAACCAACGGCCGCCAGCCCAATTGGCA  
GCTCTCCATCGCCACCAGTCAATGGTGCAACAATGCCAAAAGGGTGGCAGTGCCGAACGGACAACCGCC  
AAGCGCCGCCGCTACATGCCTCGGGAGGTGCCACCGGATTCCGTTGCCAGCAGGACCATAAAGTGTTA  
CTAAAACGTGGGCAGCCCTCCACCTGCTGCTCCTCGGGGTGGGGCGGGCCTCCTCCCTGCA  
CAGCACCTGGAGCAAACCCCAACAACACGACAAGTACAGGAGCGCTGCTGCAGAGTGAGAGTGGGAC  
TGCACCAGAGTCAACCCTTGGAGGTGCTGCTGCTCAAATTATGCAAATTCACCTTGGGGCCCGGGAGCC  
TCTCCAACAGCGCGCCTCCCAACCAATTCACATCTGGGACAAGGTGATTGTAGACGGGTCTGACA  
TGGAAGAGTGGCCTTGTATTGCCAGCAAAGACTGAATCTTCTCCGAAAACACCACCGATAACAACAG  
TGCCTCGAACCTGGCTCTGAGAAGAGCAGTCTGCCAGGAAGCACCAGTAAACAAGGCAAGGGGAGC  
CAATGCCAGGCTGCAAGTCTGGGAACGAATGTAATCTTGGGGTCTGGAATCTGACCCCAAGCTAAGT  
CTGTTCAACCTCCCAACTCTACTTCAGATAGCAACAATGGACTAGGAACTGGAGGAGCAGGAGTGGTCA  
GGATAGAATTGGACCTGGCTCTGGCTTCACTTTAACCCTAAAGCAACCCATCTGCCTGGCCAGCA  
TTGGTCCAAGAAGGGACTTCTAGAAAAGGGCATTGGAACAGAAAGTAGTGTCCAGTGCACAAGTTA  
GCACAGTAGGTCAGGCATCCAGGGAACAGCAGTCAAAGATGGAAAATGCGGGTGTAAATTTTGTGTCTC  
TGGCAGAGAACAGGCTCAAATTCATAACACTGATGGACCAAAAAATGGAACACTAACTCCTTGAACCTA  
AGTTACCAAACCCCATGGAATAAGGGAATGCCCTTTGGAATGGGCTTGGGGAACACCTCCAGGAGCA  
CTGATGCCCTTCAAAAGCACTGGAGATCGAAAGACTGGGAGTGTGGGTCTTGGGGTGCAGCTAGGGG  
GCCTTCTGGAACAGCAGTCTCTGGACAAGCAATCTGGAAAATATGGGAACAATGGAAGGACAGAGA  
GAGGACTCCTGAAAAGGAGTCTGTTCAAAACCAACTGGGTCAAAAAGTACTCTTGGGACAACAATA



ACAGGTCTACGGGTGGGTCTGGAACCTTTGGCCCTCAGGACAATAATGACAACAAATGGGGTGAAGGGAA  
CAAAATGACATCTGGGGTCTCTCAGGGAGAATGGAACAGCCGACTGGGTCTGATGAGTTGAAAATTGGA  
GAATGGAGTGGTCCAAACCAACCAATTTAGCACTGGAGCATGGGACAATCAAAGGGCCACCCCTCC  
CTGAAAACCAAGGCAATGCCAGGCTCCCTGTTGGGGAAGATCTTCCAGCTCCGACGGAAGTGAAGTTGG  
AGGTCAAAGCACTGGAAGCAACCACAAGCAGGAAGTAGTGACAGTCATAATTCTGGTCGTCGGTATAT  
AGGCCACGCATCTGATTGCCAGGCTGTCTGCAGACTCTTTGAGCCGACTGATTTGGACCCTAGGG  
TGCTCTCAAACACTGGCTGGGGCCAACTCAAATTAAGCAGGACACAGTGTGGGATATTGAAGAGGTGCC  
AAGGCCTGAGGGGAAATCTGACAAAGGAAGTGGGGTGGGAGAGCGCTGCCACACAGACCAAGAATCA  
GGGGCTGGGGAGATGCACCCAGCCAAAGCAATCAAATGAAGTCTGGATGGGGGAGCTCTCAGCCTCGA  
CAGAGTGGAAAGACCCCAAGAGCACAGGAGGCTGGAATGACTATAAGAACAACAACCTTTCTAACTGGGG  
AGGAGGCCGAGCAGATGAAAAGACACCTTCTCTTGAATGAGAGTCTTGTGAAGATCAGGGGTGGGG  
GGTGGCGCCCAACCAACCAAGGATGGACTTCTGGGAAGAATGGTTGGGCGAGGAGGTGGATCAAGTGA  
AAAATAATAATTGGGAAAGTCTGCCAATAAGCCTGTGTCTGGGTGGGGTGAAGGAGGACAGAATGAAAT  
TGGAACCTGGGGTAAATGGTGGGAATACAAACCTAGCATCAAAGGTGGGTGGGAAGATTGCAAAAGATCC  
CCTGCATGGAATGAGACAGGCAGACAGCCCAATCTCTGGAATAAACAACCAACAGCAGCAGCAGCCAC  
CGCCACCACAGCCAGAGGCTTCTGTTTCATGGGGAGGCCACCCCGCCACCTCAAGGCAATGTTGACCC  
TTCTAATTCCAACTGGAGCAGTGGACCCAGCCTACAACCCCTAAGGATGATGAACCCAGTGGTGGGAG  
GAGCCATCCCACAGTCAATTAGTCGGAATGGACATTGATGATGGCACTTCAGTTGGGGAGACCCCTA  
ACAGTTATAACTACAAGAATGTGAACCTTTGGGATAAGAATCTCAAGGGGGCCAGCACCCTGAGAACC  
AAACCTGCCTACCCCAATGACCGGAAATCAGCATCAGTCTGGAGCAAAAGCACACCCCTGATTTGAGAT  
AATGGACTTCAGCCTGGGGTGGGCAAAATGAAAGCAGTCTGGGTGGGGTGAATGGATGATGCAGGAG  
CATCAACCACAGGCTGGGAAACACACCTGCCAACGCTCCCAATGCCATGAAACCCCAATTCAAAATCTAT  
GCAAGACGGCTGGGGGAGAGTGACGGACAGTACAGGAGCTCGCCATCTAGCTGGGAAGAGGAGGAT  
GACGGAGGAGTCTGGAACACCCCGGCTCTCAGGGAAGCAGTCTCTCCCAACTCAGCAAGCTGGGGAC  
AAGGAGGAAAGAAACAATGAAGTGTCTACTAAAAGGAGGAAACAATGATTCATGGATGAATCCTCTTGC  
CAAACAGTTTTCAAATATGGGATTGCTGAGTCAAACCTGAGGATAACCAAGCAGCAAAATGGATTTGCT  
GTAGATAAGAAATTTGATGTGGACAAGAGAACAATGAATCTCGGGATTTAATGATATCATGAGGAAGG  
ATCGACCTGGGTTCCGTCCACCTAATTCAAAAGACTTGGGAACCACAGACAGTGGGCCTTATTTTGAGAA  
GGGCGCAGTCATGGTTGTTGGAAACAGCACAGCAATCGAGAGGCTGCACACTCCAGTGCAGCCA  
CTAAGTTCTTCTCCTGCTCCGGGCGCAAGTGCCTCCCAAGTTTATCTCCCCCAGGTTTCTGCCTCAA  
TGCTCAAGCAGTTCCCAACAGTGGCTGAATCCAGTCTCTTAAATGTGGGGCCAGCTATCTCTCA  
ACAGATTGCCATGCTGAGCCAGCTTCCACAGATACCCAGTTTCAGTTGGCATGTCAGCTTCTCCTGCAG  
CAGCAGCAGCAACAGCAGCAGTTGCTACAGAACCAGAGAAAGATTTCTCAAGCAGTGCAGCAGCAGCAAG  
AACAGCAGCTGGCAAGAATGGTGAAGTGTCTCCAGCAGCAGCAACAGCAGCAGCAGCAGCAGCAGGCA  
GCCTAGCATGAAGCATTACCTTCTCATCTGTGGGCTAAGCCACATTTGGACAACATGGTACCCCAAT  
GGCTGAATGTGGGCTCCAGAGCTTCCAAACCAAGGGCAATTCCTGGATATGGTTCTGGCTCAGCT  
CTGGTGGCATGGACTATGGTATGGTTGGTGGCAAGGAGGCTGGGACCGAGTCTCGCTTCAAACAGTGGAC  
CTCAATGATGGAAGGGCTGCCATCTGTGGCCACACAAGAAGCCACCATGCACAAAAACGGCGCTATAGTG  
GCCCTGGTAAGACCCGAGGAGTTACCATACAACAGTTTGATATAATCCCAGGTGACACACTGGGTG  
GCCATACGGGTCTGCTGGTATAGCTGGTTACCTGCCAAATCTCCACCGACTAATAAAATCGGAAGTAA  
ATCCAGCAATGCCAGTTGGCCTCCAGAATTCAAACAGGAGTGGCATGGAAGGATTCAAAATATTGAC  
CCTGAATCTGACCCTATGTACCCCGAGGAAGTGTGCTAGGGGGTACAACCACATCTCCATTGTAGATA  
CTGACCACCAACTGCTGCGGGATAACACCACAGGCTAATTCCTCCCTCAACACCTCGTGCCTTCCCT  
TGGTCAAGCTCAGCCCTACAGTGCCTCTGACAACCTCTTACCAACGTTTCATAGCACTTACGAAAGTCCCT  
GATTATAAATCCACGTGGTCCAGATCCCATAGGACACAACCCCACTCATCTCTCAATAAAGATGTGGA  
AAAATCACATCTCTCCAGGAACACTACACCGCTGACCCGCCACCTCTGGCCTGACCAACCCCAACCC  
GGCATCTCTTGGAGCAGCACAGCACCAGTCCGTGAGGGGTGGGGACACAGGACTCCCGGATTGCC  
TGCGCCTCTACCTGGAGTGTGGTGGCTCTGTCCGTCTAGTACTGGCTGGTTCTCCACAATCTCACCC  
CACAGATTGATGGGTCAACCTGAGAACGATCTGCATGCAGCATGGCCCACTGCTGACATTCATCTGAA  
CCTAACCCAGGGCACTGCCCTGATCCGATACAGCACCACCAAGAGGCAGCCAAAGGCCAGACTGCAGTGC  
CACATGTGTGTGTGGGAAACACTACCATCTGGCCGAGTTTGCCACTGAGGATGAAGTCAAGCCGCTTTC  
TGGCTCAAGCTCAGCCCTACGCTGACAGCCACCCGAGTGCACCTGCCACAGGGTGGCAGTCCCTGGA  
GACCAGCCAGAACCAAGCAGACCCCGTTGGACCTGCGCTGAACCTTTTCGGTGGGTCCACCGGGCTCGGG  
CAGTGGAGCAGCAGCGCTGGTGGCAGCAGTGGGGCCGATCTTGCCGCACTTCTTGTGGGGCCCCCAA  
ACTATCTTCTAGCTTGTGGGAGTCCGACGGTGAAGATCCCATAGGATGGGCAGCCCTGCTCCTT  
ACTACCTGGTACCTTCTGGGAGGAGGTCGGATTCAATC

ACGCGTACGCGGCCGCTCGAG - GFP Tag - GTTTAA

**Protein Sequence:**

>MG216215 representing NM\_144812  
 Red=Cloning site Green=Tags(s)

MQTNEGEVEEESSSQVEQEDFVMEGHGKTPPPGEEESKQEKEQEREELMEDKKRKKEDKKKKEATQKVTE  
 QKTKVPEVTKPSLSQPTAASPIGSSPSPVNGGNNAKRVAVPNGQPPSAARYMPREVPPRFRCQQDHKVL  
 LKRGQPPPPSCMLLGGGAGPPCTAPGANPNNAQVTGALLQSESGTAPESTLGAAAASNYANSTWGPGA  
 SSNSGASPNIHIWDKVIDGSDMEEWPCIASKDTESSENTTDNNSASNPGEKSSLPGSTTSNKGKGS  
 QCQAASGNECNLGVWKS DPKAKSVQPPNSTSDSNGLGNWRSTSGQDRIGPGSGFSNFNPNNSAWPA  
 LVQEGTSRKGALETESSSSAQVSTVGQASREQQSKMENAGVNFVVS GREQAQIHNTDGPKNGTNSLNL  
 SSPNPMENKGMPPGMGLGNTSRSTDAPSQSTGDRKTGSVGSWGAARGPSGTDTVSGQSNSGNGNNGKDR  
 EDSWKGASVPKPTGSKSDSWDNNRSTGGSWNF GPQDNDNDKWE GGNKMTSGVSGQEWKQPTGSDCLKIG  
 EWSGPNQPNSTGAWDNQKGHPLPENQNAQAPCWGRSSSSAGSEVGGQSTGSNHKAGSSD SHNSGRRSY  
 RPTHPCQAVLQTL LSRDLDPRVLSNTGWGQTQIKQDTVWDIEEVPRPEGKSDKGTEGWE SAATQTKNS  
 GGWDAPSQSNQMKSGWELSASTEWKDPKSTGGWNDYKNNNSNWGGRADEKTPSSWNESSCKDQGWG  
 GGRQPNQGWTSKNGWGEEDVQVKNWNWESSANKPVSGWEGGQNEIGTWGNGNTNLASKGWEDCKRS  
 PAWNETGRQPNWNKQHQQQQPPPPQPEASGSWGGPPPPQGNV RPSNSNWSGQPPTTKDDEPSGWE  
 EPSPQSI SRKMDIDDGTSAWGDPNSYNYKNVNLWDKNSQGGPAPREP NLPTPMTGKSASVWSKSTPPAPD  
 NGTSAWGE PNESSPGWEMDDAGASTTGWGNT PANAPNAMKPNKSMQD GWESDGPV T GARHPSWEEED  
 DGGVWNTAGSQGSTSSHNASWQGQKQMKCSLKGNNDSWMLAKQFSNMGLLSQTEDNPSSKMDLS  
 VDCKFDVDKRTMNLGDFNDIMRKDRPGFRPPNSKDLGTTDSGPYFEKGGSHLFGNSTAQRGLHTPVQP  
 LSSSPGLRAQVPPQFISPVVSASMLKQFPNSGLNPLFNVGPQLSPQQIAMLSQLPQIPQFLACQLLLQ  
 QQQQQQLLQNRKISQAVRQQEQQLARMVSALQQQQQQQQQRQPSMKHSPHPVGP KPHLDNMVFN  
 ALNVGLPDLPTKGP IPGYGSGFSSGMDYGMVGKEAGTESRFKQWTSMM EGLPSVATQEATMHKNGAIV  
 APGKTRGGSYPNQFDIIPGDTLGGHTGAGDSWLPKSPPTNKIGSKSSNASWPPEFQPGVPWKGIQNID  
 PESDPYVTPGSVLGGTTTSPIVDTHQLLRDNTTGSNSSLNTSLSPGAWPYSASDNSFTNVHSTSAKFP  
 DYKSTWSPDPIGHNP THLSNMKWNHISRRNTPLTRPPPGLTNPKPASWSS TAPRSVRWGTQDSRIA  
 SASTWSDGGSVRPSYWLVLHNLTPQIDGSLRTICMQHGPLLTFHLNL TQGTALIRYSTKQEAQAQTAL  
 HMCVLGNTTILAEFATEDEVS RFLAQAPPTPAATPSAPATGWQSL ETSQNPQADVP GPALNLFGGSTGLG  
 QWSSSAGGSSGADLAGTSLWGPPNYSSSLWGVPTVEDPHRMGSPAPLLPGDLLGGGSDSI

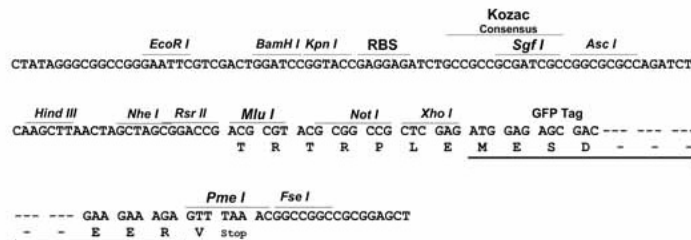
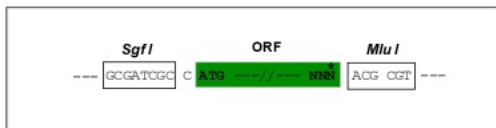
TRTRPLE - GFP Tag - V

**Restriction Sites:**

SgfI-MluI

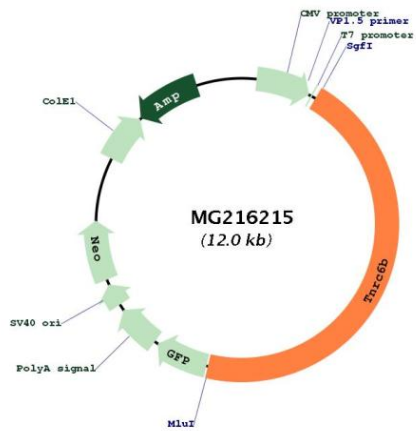
**Cloning Scheme:**

Cloning sites used for ORF Shuttling:



<b>ACCN:</b>	NM_144812
<b>ORF Size:</b>	5430 bp
<b>OTI Disclaimer:</b>	The molecular sequence of this clone aligns with the gene accession number as a point of reference only. However, individual transcript sequences of the same gene can differ through naturally occurring variations (e.g. polymorphisms), each with its own valid existence. This clone is substantially in agreement with the reference, but a complete review of all prevailing variants is recommended prior to use. <a href="#">More info</a>
<b>OTI Annotation:</b>	This clone was engineered to express the complete ORF with an expression tag. Expression varies depending on the nature of the gene.
<b>Components:</b>	The ORF clone is ion-exchange column purified and shipped in a 2D barcoded Matrix tube containing 10ug of transfection-ready, dried plasmid DNA (reconstitute with 100 ul of water).
<b>Reconstitution Method:</b>	<ol style="list-style-type: none"><li>1. Centrifuge at 5,000xg for 5min.</li><li>2. Carefully open the tube and add 100ul of sterile water to dissolve the DNA.</li><li>3. Close the tube and incubate for 10 minutes at room temperature.</li><li>4. Briefly vortex the tube and then do a quick spin (less than 5000xg) to concentrate the liquid at the bottom.</li><li>5. Store the suspended plasmid at -20°C. The DNA is stable for at least one year from date of shipping when stored at -20°C.</li></ol>
<b>Note:</b>	Plasmids are not sterile. For experiments where strict sterility is required, filtration with 0.22um filter is required.
<b>RefSeq:</b>	<a href="#">NM_144812.3</a>
<b>RefSeq Size:</b>	17334 bp
<b>RefSeq ORF:</b>	5433 bp
<b>Locus ID:</b>	213988
<b>UniProt ID:</b>	<a href="#">Q8BK12</a>
<b>Cytogenetics:</b>	15 E1
<b>Gene Summary:</b>	Plays a role in RNA-mediated gene silencing by both micro-RNAs (miRNAs) and short interfering RNAs (siRNAs). Required for miRNA-dependent translational repression and siRNA-dependent endonucleolytic cleavage of complementary mRNAs by argonaute family proteins. As scaffolding protein associates with argonaute proteins bound to partially complementary mRNAs and simultaneously can recruit CCR4-NOT and PAN deadenylase complexes (By similarity).[UniProtKB/Swiss-Prot Function]

Product images:



Circular map for MG216215