

Product datasheet for **MG216210**

Adam1b (NM_172125) Mouse Tagged ORF Clone

Product data:

Product Type:	Expression Plasmids
Tag:	TurboGFP
Symbol:	Adam1b
Synonyms:	Adam1; Ftna
Mammalian Cell Selection:	Neomycin
Vector:	pCMV6-AC-GFP (PS100010)
E. coli Selection:	Ampicillin (100 ug/mL)



ORF Nucleotide Sequence: >MG216210 representing NM_172125
Red=Cloning site Blue=ORF Green=Tags(s)

TTTTGTAATACGACTCACTATAGGGCGCCGGGAATTCGTGACTGGATCCGGTACCGAGGAGATCTGCC
GCCGCGATCGCC

ATGGAGCGACTAAAGCTGGGAAAATCCCAGAGCACTGGTGTATCAGGCTGGTGGCCATGTTGCTCTTGG
CAATAATTTTCTCCCGAGCACGTTCTGTGACATTGGATCTGTATATAATTCTTCTATGAAACTGTCAT
CCCTGAGAGACTGCCAGGCAAGGGGGGAAAGACCCTGGAGGGAAGGTGTCTACATGCTATTGATGCAA
GGCCAAAAGCAGCTGCTCACCTCGAGGTAAGGGGACACTACCCTGAGAATAACTTCCCAGTCTACAGTT
ACCACAATGGCATCTGAGGCAAGAAATGCCTCTCCTCCAGGACTGCCACTATGAAGGCTACATGGA
AGGGGTGCCAGGCTCCTTTGTTTCTGTCAACATCTGTTCAAGCCTCAGGGGGTCTTGATTAAAGAGGAA
ACATCCTATGGCATTGAGCCATGCTCTTCCAAAACTTTGAACATGCTCTACACCATGGAGCATC
AGCCTGTGGTCTCCTGCAGTGTCACTCCAAAGACAGCCCTGGGGACACAGCCATCCACCAAGGAGCAG
GAAGCCCGATGACCTACTGGTCTGACTGACTGGTGGTCACACACCAAGTATGTGGAGATGTTTGTGGT
GTCAACCACAGCGGTTCCAGATGTGGGGCAGTAACATCAACGAGACCGTCCAGGCAGTAATGGACATCA
TTGCTCTGGCCAACAGCTTCACTAGGGGATAAACACAGAGGTGGTGTGGTGGGCCTGGAAATCTGGAC
AGAGGGGGACCCGATAGAGGTCCCAGTGGACCTGCAGACCACACTCAGGAATTTCAACTTCTGGAGACAG
GAGAACTCGTGGCCGGGTGAGGACAGTGTGGCACAATTGATCGTGGGCATCGCCAGGAGAGAACC
AGGGCCAGGCGTTTCTCCGTGGTGCCTGTTCCGGGTGAGTTTGCGGCGCCGTGGAGGCTTCCATCATGA
AGATGCTCTCTGTTCCGGCTCTCATGGCCACGAGCTCGGGCACAACCTGGGTATCCAGCACGACCAC
CCGACCTGCACCTGTGGTCCCAAGCACTTCTGCCTCATGGGTGAGAAGATCGGTAAGGACAGTGGCTTCA
GCAACTGCAGCTCTGACCACTTCTCCGTTTCTCCAGCACAGAGGGGTGTGCCTGCTTGATGAGCC
TGGGCGCCAGAGCCGATGCGCAGAGCTGCCAATTGTGGGAATGGTGTGGTGGAGGACTTGGAGCAGTGT
GACTGTGGCAGTACTGTGATAAAAGCCAGTGTGTGATGAAAATTTGAAAATGAAGGGCAACTCAGTGT
GCAGCACTGAACTTTGCTGTTTTAAATGTAACTTTAAAAAGGAAGGAGATGTTTGCCGCTCTGCTGACGG
ACCATGTGACCTGGAAGAATACTGCAATGGGACCTCTGCAGCATGTCCCAGTGACAGGAAAGCCAGGAC
GGCTCTAAGTGCCACGAATCCTTCTTGCTTTAATGGTCAGTGCATGGACCCCTACCTTTCAGTGTCTC
GTATTTTTGGGCATGGTTCAAGGTCTGCCTCCGATTATTGCTACACCTCTCTGAACTCGAGAGGAGACCA
GTTTGGAACTGTGGCTCCTCTCAATTTCCAAAAAGTATACCAAGTGTTCAGATAAAAAATGTAATG
TGTGGGAACTTATATGTACAGAGGTGGCCTTCTGCCACAAATCCAACCGAACAACTGTGCTCCAGG
TCCCTGAGACCGAGGACTGGTGTGGAGTGTAGCTGTGTTTGACATGAGAGATTCCCTCCATGAGGAATA
CGTGAAGGACAACACTTACTGTGGCAAAGATAAAGTCTGTAATAATTTCCATTTGTGAGGACTTCACTCCA
TTCTCATTTCCCTGTAGTCCAAGCAAAATGCAACAAGCAGGGGTGTGCAATGACCTGGGAACTGCC
ACTGCTCCTTCGGCTTTGCACCTCCCGACTGCAAAGAGGAAGGCACTGGGGCAGTGTGGACAGTGGCCC
TGCTGTAAATCTGTCAAATGACAGCAGTCCAGGGCCGAACCTCACCCAATCCAGCACAGAGGAGCTGATC
CTTAACTTAAAGCTGATCGTCTGGCTGTCACTTCTGGTGTGATGATACTTAAATAATCATATGCATCA
TAAGTGCCTACACCAAGTCAGAGACCGCTTCCGAAGCAGGGCCTTCCAGACTAGAGGAGCTTCCAGAAG
GGAGAAGGAAGAGCAGGAGGAGTCTACCAGAAGAGGCTAAAGGGGAGGAGGAGTGGAGTATGGG
AAGGAAGAAGCAGAAGAGCAAGGAGCAGTAGAAGAGGAAGGAGCAGAAGAGGCAACGAAGAGCAGCAG
CAGAAAAGAAAAGACGAAGATGAAGAAGAGGGAGAGGAA

ACGCGTACGCGGCCGCTCGAG - GFP Tag - GTTTAA

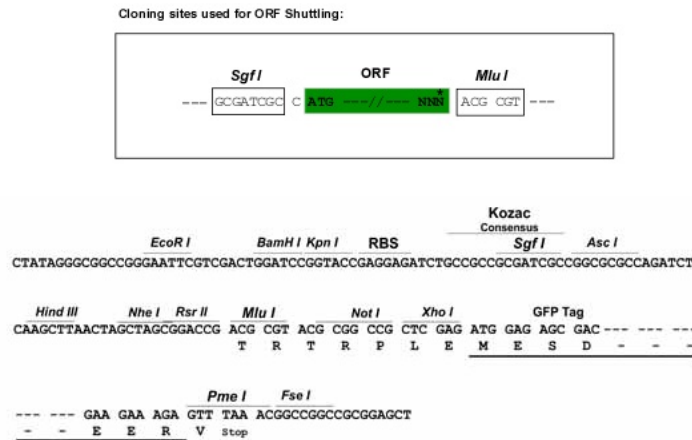
Protein Sequence: >MG216210 representing NM_172125
 Red=Cloning site Green=Tags(s)

```
MERLKLKGIPEHWCIRLVAMLLLAIIIFLPSTFCDIGSVYNSSYETVIPERLPGKGGKDPGGKVSYMLLMQ
GQKQLLHLEVKGHY PENNFPVYSYHNGILRQEMPLLSQDCHYEGYMEGVPGSFVSVNICSLGRGLIKEE
TSYGIEPMLSSKNFEHVLVTMEHQPVVSCSVTPKDSPGDTSHPPRS SRKPDLLVLTDWWSHTKYVEMFVV
VNHQRFQMWGSNINETVQAVMDIIALANSFTRGINTVVVLVGLIEWTEGDP I E V P V D L Q T T L R N F N F W R Q
EKL V G R V R H D V A H L I V G H R P G E N E G Q A F L R G A C S G E F A A A V E A F H H E D V L L F A A L M A H E L G H N L G I Q H D H
P T C T C G P K H F C L M G E K I G K D S G F S N C S S D H F L R F L H D H R G V C L L D E P G R Q S R M R R A A N C G N G V V E D L E Q C
D C G S D C D K S Q C C D E N C L K G N S V C S T E L C C F K C N F K K E G D V C R P A D G P C D L E E Y C N G T S A A C P S D R K A Q D
G S K C H E S F L C F N G Q C M D P T F Q C S R I F G H G S R S A S D Y C Y T S L N S R G D Q F G N C G S S Q F P K K Y T K C S D K N V M
C G K L I C T E V A F L P Q I Q P N N L L Q V P E T E D W C W S V A V F D M R D S L H E E Y V K D N T Y C G K D K V C K N S I C E D F T P
F S F P C S P S K Q C N K H G V C N D L G N C H C S F G F A P P D C K E E G T G G S V D S G P A V N L S N D S S P G P N S T Q S S T E E L I
L N L K L I V L A V I L V L M I L L I I I C I I S A Y T K S E T A S E A G P S E L E E L P E G E K E E Q E E V L P E E A K G E E E E L E Y G
K E E A E E Q G A V E E E G A E E A N E E A A A E K K D E D E E E G E E
```

TRTRPLE - GFP Tag - V

Restriction Sites: SgfI-MluI

Cloning Scheme:



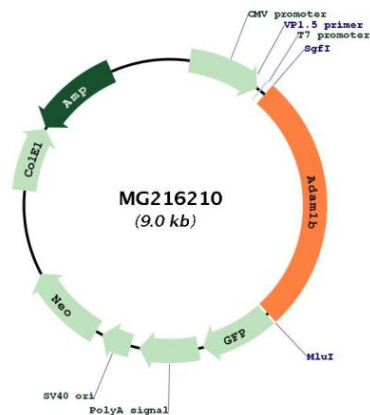
ACCN: NM_172125

ORF Size: 2418 bp

OTI Disclaimer: The molecular sequence of this clone aligns with the gene accession number as a point of reference only. However, individual transcript sequences of the same gene can differ through naturally occurring variations (e.g. polymorphisms), each with its own valid existence. This clone is substantially in agreement with the reference, but a complete review of all prevailing variants is recommended prior to use. [More info](#)

OTI Annotation: This clone was engineered to express the complete ORF with an expression tag. Expression varies depending on the nature of the gene.

Components:	The ORF clone is ion-exchange column purified and shipped in a 2D barcoded Matrix tube containing 10ug of transfection-ready, dried plasmid DNA (reconstitute with 100 ul of water).
Reconstitution Method:	<ol style="list-style-type: none">1. Centrifuge at 5,000xg for 5min.2. Carefully open the tube and add 100ul of sterile water to dissolve the DNA.3. Close the tube and incubate for 10 minutes at room temperature.4. Briefly vortex the tube and then do a quick spin (less than 5000xg) to concentrate the liquid at the bottom.5. Store the suspended plasmid at -20°C. The DNA is stable for at least one year from date of shipping when stored at -20°C.
Note:	Plasmids are not sterile. For experiments where strict sterility is required, filtration with 0.22um filter is required.
RefSeq:	NM_172125.3
RefSeq Size:	2884 bp
RefSeq ORF:	2421 bp
Locus ID:	280667
UniProt ID:	Q8R534
Cytogenetics:	5 F
Gene Summary:	May play a role in spermatogenesis and sperm maturation.[UniProtKB/Swiss-Prot Function]

Product images:

Circular map for MG216210