

## Product datasheet for **MG216200**

### **Ppm1e (NM\_177167) Mouse Tagged ORF Clone**

#### **Product data:**

Product Type:	Expression Plasmids
Product Name:	Ppm1e (NM_177167) Mouse Tagged ORF Clone
Tag:	TurboGFP
Symbol:	Ppm1e
Synonyms:	AW049266; B930008A12Rik; mKIAA1072; POPX1; PP2CH
Mammalian Cell Selection:	Neomycin
Vector:	pCMV6-AC-GFP (PS100010)
E. coli Selection:	Ampicillin (100 ug/mL)



[View online »](#)

ORF Nucleotide  
Sequence:

>MG216200 representing NM\_177167  
 Red=Cloning site Blue=ORF Green=Tags(s)

TTTTGTAATACGACTCACTATAGGGCGGCCGGAATTCGTCGACTGGATCCGGTACCGAGGAGATCTGCC  
 GCC**CGCATCGCC**

ATGGCGGGCTGCATCCCTGAGGAGAAAACCTACCGCGCTTCTGGAGCTGTTCTGGGCGAGTTCGCGG  
 GACCGTGCAGTGGCGGCGAGCCAGAGCCCGAACCCGAATCCGAGCCCGAGCCCGAGCCCGAAGCCGAGCT  
 AGTCGCGGCTGAGGCGGCCGAGGCTTCGGGGGAGGAACCGGGGAGGACGCTGCGACGGTAGAGGGGACC  
 GAGGAGGGGGAGCAGGACCAAGACCCCGAGCCCGAAGACGAGGCGGTGGAGGAGGAGACGGCAGCGGAGG  
 GCGAGGAGGAGGAAGAGGAGGAAGCGGCTGCCCGGGGCACTCGGCCGTGCCGCCACCGCCGAGCCCA  
 GCTGCCACCGCTGCCCGCTCCACGGCCGCTGTCGAGCGCATCACCCGAGAGGAGGTGGAGGGCGAG  
 AGCCTGGACCTGTGCCTGCAGCAGCTCTACAAATATAACTGCCCTTCTTTCTGGCTGCTGCTTTAGCCA  
 GAGCCACATCAGATGAAGTCTCCAGAGTGACCTTTCTGCTCACTGTATCCCAAAGGAAACGGACGGCAC  
 AGAAGGGACTGTGAAATTGAGACAGTGAATTTGGCCGTTCTGTCTTCAGCAAACATACATGAGATCTGC  
 TGCAAGTTGGGTGAAGACTTCCCTCTGCGCAGGAGGCCTCAGATTTATTATGAGACGTCAATTCATGCCA  
 TCAAGAACATGCCAAGGAAAATGGAGGACAAAACAGTCTGCATTCTGACTTTAACATGCTCTTCAACCT  
 AGAGGACCAGGAGGAACAAGCACTTTTGCAGTGTGATGGCCATGGGGAGTGGACGCTGCTATTTAT  
 GCCTCCGTTACCTACACGTTAACTTAGTGCGCCAGGAGATGTTCCCATGATCCTGCTGAGGCTCTCT  
 GCCGGGCTTCCGTGTACAGATGAGCGGTTTGTGAGAAGGCAGCCAGGGAGAGCTTACGGTGTGGGAC  
 CACAGGAGTAGTACTTTATCAGAGGCAACATGCTCCACGTGGCATGGGTGGGCGATTCCAGGTGATG  
 CTGGTAAGAAAGGGCAAGCTGTTGAACATGAAACACACAAGCCAGACAGAGAGGATGAAAAGCAGC  
 GAATTGAGGCCCTTGGAGGCTGTGTGGTTTGGTTTGGCGCTGGAGGGTGAATGGAAGCCTGTCGCTC  
 CAGAGCCATCGGAGATGCTGAGCACAAGCGTATATCTGTGGAGACGCACTCGGCTCCACTGTTTTG  
 GATGGGACTGAAGACTACCTCATTCTGGCCTGTGACGGCTTCTATGACACCGTGAACCTGACGAGGACG  
 TGAAGGTTGTGTCTGACCACTTGAAGAGAATAACGGAGACAGCAGCATGGTTGCCACAAATTAGTAGC  
 GTCGGCTCGTGTGCGGGTCAAGTGATAACATCACTGTTATTGTGGTATTCTGAGGGACATGAACAAG  
 GCTGTAATGTTAGTGAGGAGTCAGAGTGGACAGAGAACCTTTTCAAGGAGGGCAAGAAGATGGTGGG  
 ATGATAAGGAGACTCATGGAGAGTGCAAGCGCCCTTGGCCACAGCACCAGTGCTCAGCACCCGCGATCT  
 AGGCTATGAGGGCGAGTGGATTCACTACTGATAGAAGTACCTCAGCCAGGGCCCAATCAACGTG  
 CTGGAAGATCCAGACTACCTAGATCTCACAAAATAGAAGCAAGCAAACCTCACAGTACCAATTTTGC  
 CACCAGTTGAGATGATTGGTCTGGTGCACCAAAGAAAGATCTAATGAGCTAATAATGGAGGAGAGATC  
 AGTCAAGTCATCATTGCCTGAACGGAGTGGTGTGGAGAGCCTCGGGTTCTTTAATTTGGGTTCAACA  
 GGGCAACAGATATGCAGAATGGAGAACTTGTCTCTGTGAGTCTGGGTTGAAAATGAACAGTTCAAAT  
 CCCGGGGGAAGACAGCGTCTAGGTTGTATCATTACGCCACCACTACTCCAAAAGGCAGCGTGGATTGAG  
 GTTTAATCCAAAGTTTACTCGTTTCTGTCTGCTGAGAGCCTTCTCACAAAATAGGCATTAGCCTCTCC  
 TCATTTACTCGAAGTGGGAAGAGAAAACAAGATGTTAAGAAGTTCTTTGCCATGGAGGGAAAATAGTTGG  
 AAGGATATAGTGGAAATGTGAAGATCAGAAAGCGTAATGATATTCATGCCAGACTTTCCCTGGAGCTA  
 TAAAAAT

**ACGCGT**ACGCGGCCGCTCGAG - GFP Tag - GTTTAA

**Protein Sequence:** >MG216200 representing NM\_177167  
 Red=Cloning site Green=Tags(s)

MAGCIPEEKTYRRFLELFLGFRGPCGGGEPPEPEPEPEPEPEAEELVAAEAAEASGEEPGEDAATVEAT  
 EEQEQQDQPEPEDEAVEEETATEGEEEEEEEAAPGHSVAVPPPPQQLPPLPPLPRPLSERITREEVEGE  
 SLDLCLQQLYKYNCPFLAAALARATSDEVLQSDL SAHCIPKETDGTGTEGVEIETVKLARSVFSKLHEIC  
 CSWVKDFPLRRRPQIYYETSIHAIKNNMRRKMDKHVCIPDFNMLFNLEDQEEQAYFAVFDGHGGVDAAIY  
 ASVHLHVNLVRQEMFPHDPAEALCRAFVRTDERFVQKAARESLRCGTTGVVTFIRGNMLHVAWVGDSQVM  
 LVRKGQAVELMKPHKPDREDEKQRIEALGGCVVWF GAWRVNGSLSVSRAIGDAEHKPYICGDADSASTVL  
 DGTEDYLILACDGFYDTPNPDEAVKVVSDHLKENNGDSSMVAHKLVASARDAGSSDNITVIVVFLRDMNK  
 AVNVSESEWTFNSFQGGQEDGGDDKETHGECKRPWPQHQSAPADLGYEGRVDSFTDRDSLSPGPQINV  
 LEDPDYLDLTQIEASKPHSTQFLPPVEMIGPGAPKKDLNELIMEERSVKSSLPERSGAGEPRVSNL GST  
 GQQICRMENLSPVSSGLENEQFKSRGKTASRLYHLRHHYSKRQRGFRFNPKFYSFLSAREPSHKIGISLS  
 SLTRSGKRNMKLRSSLPWRENSWEGYSGNVKIRKRNNDIPCPDFPWSYKI

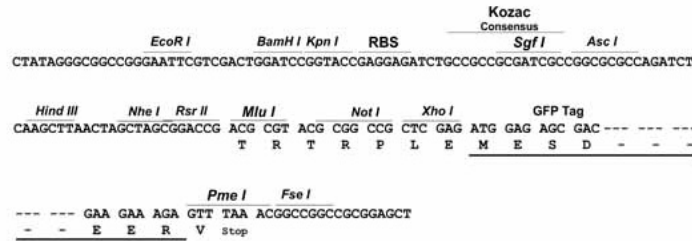
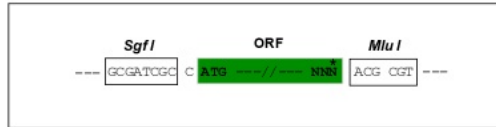
TRTRPLE - GFP Tag - V

**Restriction Sites:**

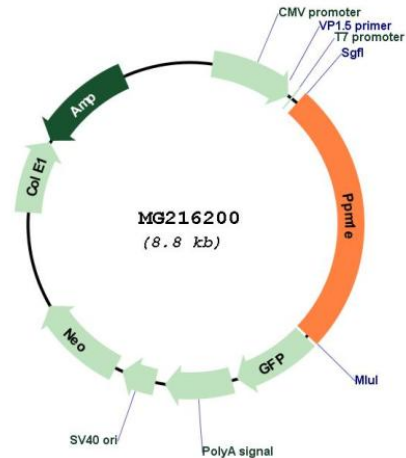
SgfI-MluI

**Cloning Scheme:**

Cloning sites used for ORF Shuttling:



## Plasmid Map:



ACCN: NM\_177167

ORF Size: 2247 bp

**OTI Disclaimer:** The molecular sequence of this clone aligns with the gene accession number as a point of reference only. However, individual transcript sequences of the same gene can differ through naturally occurring variations (e.g. polymorphisms), each with its own valid existence. This clone is substantially in agreement with the reference, but a complete review of all prevailing variants is recommended prior to use. [More info](#)

**OTI Annotation:** This clone was engineered to express the complete ORF with an expression tag. Expression varies depending on the nature of the gene.

**Components:** The ORF clone is ion-exchange column purified and shipped in a 2D barcoded Matrix tube containing 10ug of transfection-ready, dried plasmid DNA (reconstitute with 100 ul of water).

**Reconstitution Method:**

1. Centrifuge at 5,000xg for 5min.
2. Carefully open the tube and add 100ul of sterile water to dissolve the DNA.
3. Close the tube and incubate for 10 minutes at room temperature.
4. Briefly vortex the tube and then do a quick spin (less than 5000xg) to concentrate the liquid at the bottom.
5. Store the suspended plasmid at -20°C. The DNA is stable for at least one year from date of shipping when stored at -20°C.

RefSeq: [NM\\_177167.4](#), [NP\\_796141.2](#)

RefSeq Size: 6315 bp

RefSeq ORF: 2250 bp

Locus ID: 320472

UniProt ID: [Q80TLO](#)

Cytogenetics: 11 C

Gene Summary: Protein phosphatase that inactivates multifunctional CaM kinases such as CAMK4 and CAMK2. Dephosphorylates and inactivates PAK. May play a role in the inhibition of actin fiber stress breakdown and in morphological changes driven by TNK2/CDC42 (By similarity). Dephosphorylates PRKAA2.[UniProtKB/Swiss-Prot Function]