

## Product datasheet for **MG216199**

### **Il31ra (NM\_139299) Mouse Tagged ORF Clone**

#### **Product data:**

Product Type:	Expression Plasmids
Product Name:	Il31ra (NM_139299) Mouse Tagged ORF Clone
Tag:	TurboGFP
Symbol:	Il31ra
Synonyms:	CRL3; GLM-R; Glmr; GPL; NR10
Mammalian Cell Selection:	Neomycin
Vector:	pCMV6-AC-GFP (PS100010)
E. coli Selection:	Ampicillin (100 ug/mL)



[View online »](#)

ORF Nucleotide  
Sequence:

>MG216199 representing NM\_139299  
Red=Cloning site Blue=ORF Green=Tags(s)

TTTTGTAATACGACTCACTATAGGGCGGCCGGAATTCGTCGACTGGATCCGGTACCGAGGAGATCTGCC  
GCCGCGATCGCC

ATGTGGACCTTGGCACTGTGGCATTCTCTTCTCTGCAAATTCAGCCTGGCAGTCTGCCGACTAAGC  
CAGAGAACATTTCTGCGTCTTTTACTTCGACAGAAATCTGACTTGCACCTGGAGACCAGAGAAGGAAAC  
CAATGATACCAGCTACATTGTGACTTTGACTTACTCCTATGAAAAAGCAATTATAGTGACAATGCTACA  
GAGGCTTCATATTTTCCCGTTCTGTGCAATGCCCCAGACATCTGCAGTGTGAAGTACAAGCTC  
AAAATGGAGATGGTAAAGTTAAATCTGACATCACATATTGGCATTAAATCTCCATAGCAAAAACCGAAC  
ACCTATAATTTTAAAGTGAATCCAATTTGAATAGAATGTTCCAGATACAATGGAACCGCGTGAAAAG  
ACTCGTGGGTTTCTTTAGTATGCATGCTTCGGTTCAGAACTGTCAACAGTAGCCACTGGACGGAAGTCA  
ATTTTAAAACTGTAAACAGGTCTGCAACCTCACAGGACTTCAGGCTTTCACAGAATATGCTCTGGCTCT  
ACGATTCAGGTTCAATGACTCAAGATATTGGAGCAAGTGGAGCAAAGAAGAAACAGAGTACTATGGAG  
GAAGTTCACATGCTCTGGACCTGTGGAGAATTCTGGAACCAGCAGACATGAACGGAGACAGGAAGGTGC  
GATTGTTGTGAAGAAGGCAAGAGGAGCCCGTCTTGGAGAAAACATTTGGCTACCACATACAGTACTT  
TGCAGAGAACAGCACTAACCTCACAGAGATAAACAAATCACCACCCAGCAGTATGAACTGCTTCTGATG  
AGCCAGGCACACTCTGTGTCCGTGACTTCTTTAATTCTTGGCAAGTCCCAAGAGGCCATCCTGAGGA  
TCCCAGATGTCCATGAGAAGACCTTCCAGTACATTAAGAGCATGAAGGCCACATAGCCGAGCCCTGTT  
GGTGGTGAAGTGGCAAAGCTCCATTCTGCGGTGGACACTTGGATAGTGGAGTGGCTCCCAGAAGCTGCC  
ATGTCGAAGTCCCTGCCCTTCTGGAATCTGTGTCTCAGGTCACGAACTGGACCATCGAGCAAGATA  
AACTAAAACCTTTCACATGCTATAATATATCAGTGTATCCAGTGTGGGACACCGAGTTGGAGACCGTA  
TTCAATCCAAGCTTATGCCAAAGAAGGAACTCCATTAAGAGTCTGAGACCAGGTTGGAGAATCCGGT  
CTGAGGACAGCCACGATCACATGGAAGGAGATTCTAAGAGTGCTAGGAATGGATTTATCAACAATTACA  
CTGTATTTTACCAAGCTGAAGGTGGAAAAGAACTCTCAAGACTGTAACTCTCATGCCCTGCAGTGTGA  
CCTGGAGTCTCTGACACGAAGGACCTCTTATACTGTTGGGTCATGGCCAGCACCAGAGCTGGAGGTACC  
AACGGGTGAGAATAAACTTCAAGACATTGTCAATCAGTGTGTTGAAATGTCTTCTAACATCTCTAG  
TTGGAGGAGGCCCTTCTTACTTAGCATCAAAACAGTACTTTTGGCCTCAGAAAGCCAAACCGGTTGAC  
TCCCCTGTGTTGCTGATGTTCCCAACCCTGCTGAAAGTAGTTTAGCCACATGGCTCGGAGATGGTTTC  
AAGAAGTCAAATATGAAGGAGACTGAAACTCTGGGACACAGAAGACGTGGTCTAAAACCATGTCCC  
TCCCCGCGGATCTCATTGACAAGCTGGTAGTGAATTTGAGAATTTCTGGAAGTAGTTTACAGAGGA  
AGCTGGAAGGGTCAGGCGAGCATTGTTGGAGGAGAAGCGAATGAGTATGTGACCTCCCCGCTAGGCC  
GACGGTCCCCAGGAAAAGTTTTAAAGAGCCCTCCGTTTTAACTGAGGTTGCTTCTGAAGACTCCCACA  
GCACGTGTTCCAGAAATGGCGGACGAGGCGTACTCAGAAATGGCCAGGCAGCCTTCGTCTTCTGTGAG  
TCCAGGGCTATCGCCTCCCCGTGAAGACCAAGCTCAGAATCCATATTTGAAAAATTCAGTGACAACCAGG  
GAATTTCTGTGCATGAGAATATCCCAGAGCACAGCAAAGGAGAAGTC

ACGCGTACGCGGCCGCTCGAG - GFP Tag - GTTTAA

**Protein Sequence:** >MG216199 representing NM\_139299  
 Red=Cloning site Green=Tags(s)

MWTLALWAFSFLCKFSLAVLPTKPENISCVFYFDRNLTCTWRPEKETNDTSYIVTLTYSYGKSNYSDNAT  
 EASYSFPRSCAMPPDICSVEVQAQNGDGKVKSDITYWHLISIAKTEPPIILSVNPICNRMFQIQWKPREK  
 TRGFPLVCMLRFRTVNSSHWEVNFENCKQVCNLTGLQAFTEYVLALRFRFNDSTRYWSKWSKEETRVTME  
 EVPHVLDLWRILEPADMNGDRKVRLLWKKARGAPVLEKTFGYHIQYFAENSTNLTEINNIITQYELLLM  
 SQAHSVSVTSFNLSLGSQEAAILRIPDVHEKTFQYIKSMKAYIAEPLL VVNWQSSIPAVDTWIVEWLPAA  
 MSKFPALSWESVSQVTNWTIEQDKLKPFTCYINISVYPVLGHRVGEPIYQAYAKEGTPKGPETRVENIG  
 LRTATITWKEIPKSARNGFINNYTVFYQAEGGKELSKTVNSHALQCDLESLTRRSTYTVWMASTRAGGT  
 NGVRINFKTLISVFEIVLLTSLVGGGLLLL SIKTVTFGLRKP NRL TPLCCPDVPNPAESSLATWLGDF  
 KKS NMKETGNSGD TEDVVLKPCVPADLIDKL VVNFENFLEVVLT EEEAGKGQASILGGEANEYVTSRSP  
 DGPPGKSFKEPSVLTEVASEDSHSTCSRMADEAYSELARQPSSSCQSPGLSPPREDQAQNPYLKNSVTTR  
 EFLVHENIPEHSKGEV

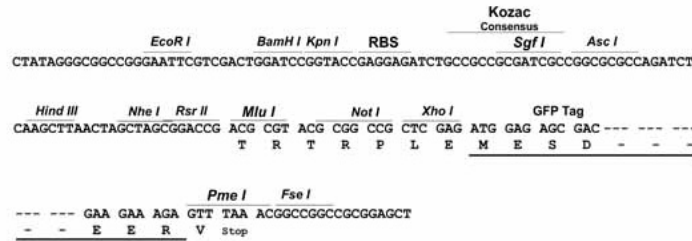
TRTRPLE - GFP Tag - V

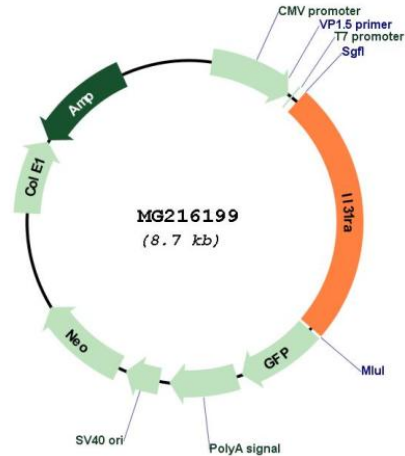
**Restriction Sites:**

SgfI-MluI

**Cloning Scheme:**

Cloning sites used for ORF Shutting:



**Plasmid Map:**


**ACCN:** NM\_139299

**ORF Size:** 2148 bp

**OTI Disclaimer:** Due to the inherent nature of this plasmid, standard methods to replicate additional amounts of DNA in E. coli are highly likely to result in mutations and/or rearrangements. Therefore, OriGene does not guarantee the capability to replicate this plasmid DNA. Additional amounts of DNA can be purchased from OriGene with batch-specific, full-sequence verification at a reduced cost. Please contact our customer care team at [custsupport@origene.com](mailto:custsupport@origene.com) or by calling 301.340.3188 option 3 for pricing and delivery.

The molecular sequence of this clone aligns with the gene accession number as a point of reference only. However, individual transcript sequences of the same gene can differ through naturally occurring variations (e.g. polymorphisms), each with its own valid existence. This clone is substantially in agreement with the reference, but a complete review of all prevailing variants is recommended prior to use. [More info](#)

**OTI Annotation:** This clone was engineered to express the complete ORF with an expression tag. Expression varies depending on the nature of the gene.

**Components:** The ORF clone is ion-exchange column purified and shipped in a 2D barcoded Matrix tube containing 10ug of transfection-ready, dried plasmid DNA (reconstitute with 100 ul of water).

**Reconstitution Method:**

1. Centrifuge at 5,000xg for 5min.
2. Carefully open the tube and add 100ul of sterile water to dissolve the DNA.
3. Close the tube and incubate for 10 minutes at room temperature.
4. Briefly vortex the tube and then do a quick spin (less than 5000xg) to concentrate the liquid at the bottom.
5. Store the suspended plasmid at -20°C. The DNA is stable for at least one year from date of shipping when stored at -20°C.

**RefSeq:** [NM\\_139299.2](#), [NP\\_647460.2](#)

**RefSeq Size:** 3680 bp

**RefSeq ORF:** 2151 bp

**Locus ID:** 218624

**UniProt ID:** [Q8K5B1](#)

**Cytogenetics:** 13 D2.2

**Gene Summary:** Associates with OSMR to form the interleukin-31 receptor which activates STAT3 and to a lower extent STAT1 and STAT5. May function in skin immunity (PubMed:15184896). Mediates IL31-induced itch, probably in a manner dependent on cation channels TRPA1 and TRPV1 (PubMed:24373353). Positively regulates numbers and cycling status of immature subsets of myeloid progenitor cells in bone marrow in vivo and enhances myeloid progenitor cell survival in vitro (PubMed:17379091).[UniProtKB/Swiss-Prot Function]