

Product datasheet for **MG216195**

Ikzf4 (NM_011772) Mouse Tagged ORF Clone

Product data:

Product Type:	Expression Plasmids
Product Name:	Ikzf4 (NM_011772) Mouse Tagged ORF Clone
Tag:	TurboGFP
Symbol:	Ikzf4
Synonyms:	A630026H08Rik; Eos; Zfpn1a4; Znfn1a4
Mammalian Cell Selection:	Neomycin
Vector:	pCMV6-AC-GFP (PS100010)
E. coli Selection:	Ampicillin (100 ug/mL)



[View online »](#)

ORF Nucleotide Sequence:

>MG216195 representing NM_011772
 Red=Cloning site Blue=ORF Green=Tags(s)

TTTTGTAATACGACTCACTATAGGGCGGCCGGGAATTCGTCGACTGGATCCGGTACCGAGGAGATCTGCC
 GCC**CGGATCGCC**

ATGCACACACCACCCGACTCCCTCGCCGTTTCCAAGGCGGCGGCCGTTTCGACCCCAGGGTCTCACC
 GGCAAGGGAAGGATAATCTGGAGAGGGAGCTCTCAGGAGGTGTCTCCGATTTCTTGCCTCAGGCCCA
 GGACTCCAACATTTTATAATGGAATCTTTATTTTGTGAAAAGTAGCGGGGACTCATCTCTGGAGAAGGAG
 TTCCTTGGGGCCCCAGTGGGGCCCTCGGTGAGCACCCCAAACAGCCAACACTCTTACCCAGCCGCTCGC
 TCAGTGCCAACCTCATCAAGGTGGAGATGTACAGCGATGAGGAGTCGAGCAGACTGCTGGGGCCGGATGA
 ACGGCTCTGGATAAAGGATGACAGTGTATTGTGGAAGACTCATTGTGAGAGCCCTTAGGCTACTGCGAT
 GGAAGTGGGCCAGAGCCTCACTCCCTGGCGCATCCGGTACCCAACGGCAAGCTCAAGTGCAGCTCT
 GCGGCATGGTCTGCATTGGGCCAATGTGCTCATGGTACACAAGCGCAGCCACACTGGGGAGAGGCCCTT
 CCACTGTAATCAGTGTGGTGCCTCCTTACACAGAAGGGCAATCTGCTTCCGCACATCAAGTGCAGCTCG
 GGGGAGAAGCCCTTCAAGTGCCCTTCTGCAACTATGCCTGCCGCGGCGTGACGCACTCACTGGCCACC
 TCCGCACACACTCAGTCTCCTCCCCACCGTGGGCAAACCTACAAGTGAACACTACTGTGGCCGGAGCTA
 CAAACAGCAAAGTACCCTGGAGGAGCACAAAGGAGGTGCCACAACACTACCTACAGAGTCTCAGCACTGAT
 GCCCAAGCTCTGACTGGCCAGCCAGGTGATGAAATCCGTGACCTGGAGATGGTGCCTGACTCAATGCTGC
 ACCCATCGACTGAACGGCCAACCTTTCATTGATCGTTTGGCCAACAGCCTCACAAACGCAAGCGTTCAC
 CCCACAGAAGTTGTAGGTGAAAAGCAGATGCGCTTACGCTCTCAGACCTTCCCTATGATGTGAATGCC
 AGCGGTGGCTATGAAAAGGACGTAGAGTTGGTGGCACACCATGGCCTGGAGCCTGGCTTTGGAGGGTCTC
 TAGCCTTTGTGGGTACAGAGCATCTGCTCCCTCCGCTCCCAACCAACTGCATCAGAACTCAGAACTC
 ACCTGTATCAGCTCTGTGTACACCCAAATGCAGCCCATCCCCAGCCGACTGGAGCTTCCAGGGTCCCGA
 GAAGCAGGTGAGGACCGGAGGACCTGGGAGATGGAGGTCCCCTCCTTTATCGGGCCCGAGGCTCTCTGA
 CTGACCTGGGGCATCCCCAGCAATGGCTGCCAGGACTCCACAGATACAGAGAGCAACCACGAAGACCG
 GATTGGTGGGGTGGTATCCCTTCTCAGGGTCCCCACCCCAACCTCCTCCACCATAGTGGTGGGCCGG
 CACAGTCCCGCTATGCCAAAGAGGACCCCAAACACAGGAGGGGTTACTGCGGGGACCCAGGCCCTT
 CCAAGGAAGTCTCGGGTGGTGGTGGAGTGGTGGAGCCAGTGAAGGCCTTAAAGTGTGAACACTGCCG
 CATCCTCTTCTGGACCAGTCTATTTACCATCCACATGGGCTGCCACGGCTTCCAGAGACCTTTTGGAG
 TGTAACATCTGTGTTATCACAGCCAGGATCGGTATGAGTCTCTTCCACATCGTCCGGGGGAACATA
 AGGTGGGC

ACGCGTACGCGGCCGCTCGAG - GFP Tag - GTTTAA

Protein Sequence:

>MG216195 representing NM_011772
 Red=Cloning site Green=Tags(s)

MHTPPALPRRFQGGGRVTPGSHRQKDNLERELSGGCAPDFLPQAQDSNHFIMESLFCESGSDSSLEKE
 FLGAPVGPSVSTPNSQHSSPSRSLSANSIKVEMYSDEESSRLLGPDERLLDKDSDVIVEDSLSEPLGYCD
 GSGPEPHSPGGIRLPNGKLLKCDVCGMVICGNVLMVHKRSHTGERPFHCNQCASFTQKGNLLRHIKLHS
 GEKPFKCPFCNYACRRRDALTGHLRTHSVSSPTVGKPYKCNCGRSYKQSTLEEHEKCHNYLQSLSTD
 AQALTGQPGDEIRDLEMVPDMLHPSTERPTFIDRLANSLTKRKRSTPQKFVGEKQMRFLSDLPYDVNA
 SGGYEKDVLEVAHHGLEPFGGSLAFVGTGHLRPLRPLPTNCISELTPVIVSSVYTMQPIPSRLELPGSR
 EAGEGPELDGDDGPLLRYRARGSLTDPGASPSNGCQDSTDTESNHEDRIGGVVSLPQGGPPPPPTIVVGR
 HSPAYAKEDPKPQEGLLRGTGPSKEVLRVVGESGEPVKAFKCEHCRILFLDHVMFTIHMGCCHGRDPPE
 CNICGYHSQDRYEFSSHIVRGEHKVG

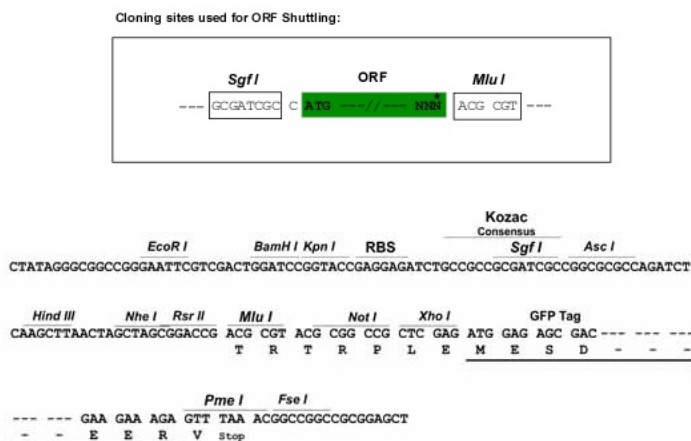
TRTRPLE - GFP Tag - V

Chromatograms:

https://cdn.origene.com/chromatograms/ja1790_c04.zip

Restriction Sites:

Sgfl-Mlul

Cloning Scheme:

ACCN: NM_011772

ORF Size: 1758 bp

OTI Disclaimer: Due to the inherent nature of this plasmid, standard methods to replicate additional amounts of DNA in E. coli are highly likely to result in mutations and/or rearrangements. Therefore, OriGene does not guarantee the capability to replicate this plasmid DNA. Additional amounts of DNA can be purchased from OriGene with batch-specific, full-sequence verification at a reduced cost. Please contact our customer care team at custsupport@origene.com or by calling 301.340.3188 option 3 for pricing and delivery.

The molecular sequence of this clone aligns with the gene accession number as a point of reference only. However, individual transcript sequences of the same gene can differ through naturally occurring variations (e.g. polymorphisms), each with its own valid existence. This clone is substantially in agreement with the reference, but a complete review of all prevailing variants is recommended prior to use. [More info](#)

OTI Annotation: This clone was engineered to express the complete ORF with an expression tag. Expression varies depending on the nature of the gene.

Components: The ORF clone is ion-exchange column purified and shipped in a 2D barcoded Matrix tube containing 10ug of transfection-ready, dried plasmid DNA (reconstitute with 100 ul of water).

- Reconstitution Method:**
1. Centrifuge at 5,000xg for 5min.
 2. Carefully open the tube and add 100ul of sterile water to dissolve the DNA.
 3. Close the tube and incubate for 10 minutes at room temperature.
 4. Briefly vortex the tube and then do a quick spin (less than 5000xg) to concentrate the liquid at the bottom.
 5. Store the suspended plasmid at -20°C. The DNA is stable for at least one year from date of shipping when stored at -20°C.

RefSeq: [NM_011772.3](#)

RefSeq Size: 3580 bp

RefSeq ORF: 1761 bp

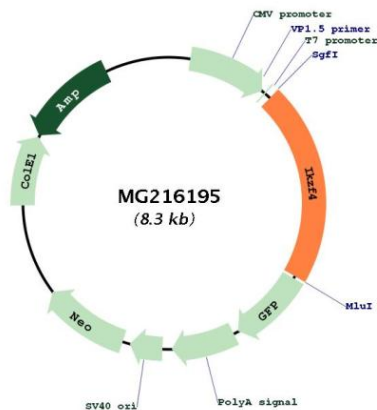
Locus ID: 22781

UniProt ID: [Q8C208](#)

Cytogenetics: 10 D3

Gene Summary: DNA-binding protein that binds to the 5'GGGAATRCC-3' Ikaros-binding sequence. Interacts with SPI1 and MITF to repress transcription of the CTSK and ACP5 promoters via recruitment of corepressors SIN3A and CTBP2. May be involved in the development of central and peripheral nervous systems. Essential for the inhibitory function of regulatory T-cells (Treg). Mediates FOXP3-mediated gene silencing in regulatory T-cells (Treg) via recruitment of corepressor CTBP1 (PubMed:19696312).[UniProtKB/Swiss-Prot Function]

Product images:



Circular map for MG216195