

## Product datasheet for **MG216175**

### Trim45 (NM\_001165952) Mouse Tagged ORF Clone

#### Product data:

Product Type:	Expression Plasmids
Product Name:	Trim45 (NM_001165952) Mouse Tagged ORF Clone
Tag:	TurboGFP
Symbol:	Trim45
Synonyms:	4921530N01Rik
Mammalian Cell Selection:	Neomycin
Vector:	pCMV6-AC-GFP (PS100010)
E. coli Selection:	Ampicillin (100 ug/mL)



[View online »](#)

**ORF Nucleotide Sequence:**

>MG216175 representing NM\_001165952  
 Red=Cloning site Blue=ORF Green=Tags(s)

TTTTGTAATACGACTCACTATAGGGCGGCCGGAATTCGTCGACTGGATCCGGTACCGAGGAGATCTGCC  
 GCC**CGGATCGCC**

ATGTCAGAAATCAGGAAGCCGTTCTGGGTTTCGTGCACAACTCCAAGATGCGAACCGCTCTGGAAGCT  
 CAGGCAAGACTCATTGTCTACATGTCTGAGGCTTTTCAAAGTCCCAGGCTCTTGCCTTCTTGCACAC  
 AGTGTGCCACCACGTGTCTGGAAAAGCTGGATCCATTCTCAGTAGTGGACATCCGTGGGGGTGACTCAGAT  
 ACAAGCTCTGAGGGGTCAGTATTCCAGGACCCCGAGTTATGTAGCCTGCAGCCACAGATCGGCATCCTCT  
 GTCCGGTATGTGATGCTCAAGTGGACCTGCCCTTGGGTGGAGTGAAGGCTTTAACGGTAGACCACCTGGC  
 CATGAATGATGTCTGCTGGAGAACCTGCGTGGGAAGGCCAGGGCCTGGTGTGTGACCTGTGCAGCGAC  
 AGAGAAGTAGAGAAGAGGTGTGACACTGCAAAGCCAATCTCTGCCACTTCTGCTGCCAGGCTCATAGGC  
 GACAGAAGAAGACGACATATCACACCATGGTGGACCTAAAAGACCTGAAAGGCTACAGCCAGTTGGAAA  
 GCCCATCTATGTCTTCTCACCTGCAGAGGAGCTGAGGCTGTCTGTGAACTCTGTGACCGCCGGTG  
 TGTCCGGACTGTGTAGTTGGGGAGCACCCGAGAGCACCCCTATGACTTCACCAGCAATGTCATCCACAAGC  
 ATGGAGATTCTGTGCGGGAGCTGCTTCGAGACACCCAGCCCCATGTGGGAGCCCTGGAAGATGCCCTGGC  
 ACAGATTAAGTGTGAACAACGCCCTCCAAGAGCGAGTGGAGGCAAGTGGCAGCTGACGTCGGACATTC  
 TCTGAGGGCTACATCAAAGCCATCGAGGAACACCCGGACAAGCTGCTGCAGCAGCTGGATGACATACGGA  
 TCCAGAGGGAACCGCTTACAGCTGCAGAAAGCGCAGCTGGAACAGCTGCTGGCAGATATGCGGACTGG  
 AGTGGAGTTCACCGAGCATCTGCTGACCAGCGGCTCGGACTTAGAGATTCTATCAACAGGGAGTGGTT  
 GTAGACGGCTCAGGAAGCTGAATAAAGTTGAATACAGTGCCCGCCAGGAGTGAACATAAGATCTGCT  
 TCTCCCCCAGGAGAAGGCAGGCCAGTGCAGGCTATGAAGTGTATGGGGCCATTAACACGCAGGAAGT  
 TGATCCAGCTCAGTGTGTCCTTCAGGGAGAAGATCTCCACAGAGCTCGAGAGAAAACAGACAGCCTTTTT  
 ACCTTGTCTGTAAAGATGCCTCGGGACAGAGCATGGGCAGGGGAGGAGATAATGTCCATGTGGAAGTTG  
 TCCCCAAGATAAGAAGGACAGTCCGATCAGAACAGTGGTCCAGGACAACAAGGATGGTCTGACCGCT  
 TTCCTACACCCCAAGGAGCCTGGCATCTACACCGTGTGGGTCTGCATCAGAGAGCAGCAGTGCAGGGC  
 TCACCATCAACGTGACCGTGGAGGGAAGCATCGGCCACATCCGGGTGTGTTTCACTGCTGCACCTTCT  
 GCTCCAGTGGAGACAGAAAGCTGCCCGCTGTGCTGCGGAGGCACCATGCCGGTGGATACCTTGCTG  
 TGGCCACGGACACAAAGGCCACCCGGCCGTCACACTGGTCTTGTGTGGGAAGTTCATTGAGAAGTCC  
 GAGTGTCTCGTTCAGAGTGGCAGGGCCGCCGAGGAGTCTGCTTAGGACCGTGGCGCTC

AG**CGGACCG**ACGCGTACGCGGCCGCTCGAG - GFP Tag - GTTTAA

**Protein Sequence:**

>MG216175 representing NM\_001165952  
 Red=Cloning site Green=Tags(s)

MSEIRKPLLGFVHKLQDANASGSSGKTHCPTCLRLFKVPRLLPCLHTVCTTLEKLDPFVVDIRGGDS  
 TSEGSVFDPELCSLQPQIGILCPVCDQVDLPLGGVKALTVDHLMNDVLEENLRGEGQGLVCDLCS  
 REVEKRCQTCKANLCHFCCQAHRRQKTTYHTMVDLKDLDKGYVQVGPILCPSHPAEELRLFCELC  
 DRPVCRDCVVEHREHPYDFTSNVIHKHGDSVRELLRDTQPHVGALEDALAIKSVNNALQERVE  
 AVAADVRFSEGYIKAEIHRDKLLQQLDDIRIQRETALQLQKAQLEQLLADMRTGVEFTEHLLT  
 SSGDLEILITKGVVVERLRKLNKVEYSARPGVNHKICFSPQEKAGQCQGYEVYGAINTQEVDPAQ  
 CVLQGEDLHRAEQKTASF TLFCKDASGQSMGRGGDNVHVEVVPKDKKDSPIRTVVQDNKDG  
 SYRVSYTPKEPGIYTVVWCIREQHVQGPSFNVTVRRKHRPHPGV FHCCTFCSSGGQKAARCA  
 CGGTMPGGYLGC GHGKHPGRPHWSCGKFIEKSECSFTSGQAPRSLRLRTVAL

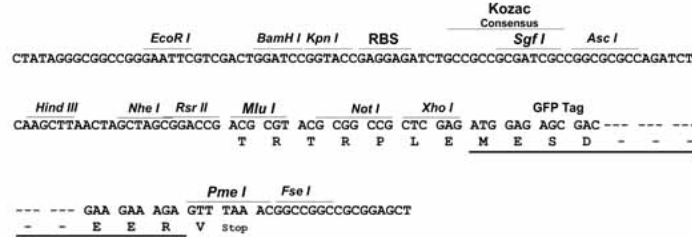
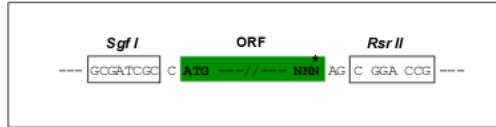
SGP**TRTRRLE** - GFP Tag - V

**Restriction Sites:**

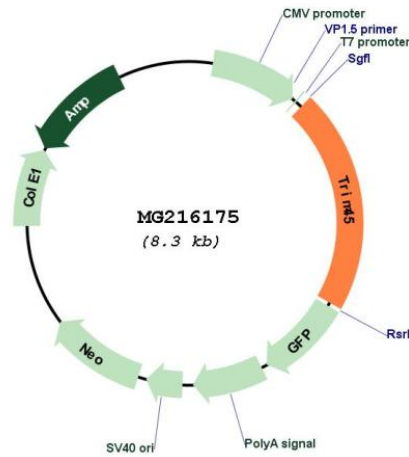
SgfI-RsrII

Cloning Scheme:

Cloning sites used for ORF Shuttling:



Plasmid Map:



ACCN: NM\_001165952  
 ORF Size: 1740 bp

<b>OTI Disclaimer:</b>	The molecular sequence of this clone aligns with the gene accession number as a point of reference only. However, individual transcript sequences of the same gene can differ through naturally occurring variations (e.g. polymorphisms), each with its own valid existence. This clone is substantially in agreement with the reference, but a complete review of all prevailing variants is recommended prior to use. <a href="#">More info</a>
<b>OTI Annotation:</b>	This clone was engineered to express the complete ORF with an expression tag. Expression varies depending on the nature of the gene.
<b>Components:</b>	The ORF clone is ion-exchange column purified and shipped in a 2D barcoded Matrix tube containing 10ug of transfection-ready, dried plasmid DNA (reconstitute with 100 ul of water).
<b>Reconstitution Method:</b>	<ol style="list-style-type: none"><li>1. Centrifuge at 5,000xg for 5min.</li><li>2. Carefully open the tube and add 100ul of sterile water to dissolve the DNA.</li><li>3. Close the tube and incubate for 10 minutes at room temperature.</li><li>4. Briefly vortex the tube and then do a quick spin (less than 5000xg) to concentrate the liquid at the bottom.</li><li>5. Store the suspended plasmid at -20°C. The DNA is stable for at least one year from date of shipping when stored at -20°C.</li></ol>
<b>RefSeq:</b>	<a href="#">NM_001165952.1</a> , <a href="#">NP_001159424.1</a>
<b>RefSeq Size:</b>	3342 bp
<b>RefSeq ORF:</b>	1743 bp
<b>Locus ID:</b>	229644
<b>UniProt ID:</b>	<a href="#">Q6PFY8</a>
<b>Cytogenetics:</b>	3 F2.2
<b>Gene Summary:</b>	May act as a transcriptional repressor in mitogen-activated protein kinase signaling pathway. [UniProtKB/Swiss-Prot Function]