

Product datasheet for **MG216165**

Cep250 (NM_001130000) Mouse Tagged ORF Clone

Product data:

Product Type:	Expression Plasmids
Tag:	TurboGFP
Symbol:	Cep250
Synonyms:	AW490617; B230210E21Rik; Cep2; Inmp
Mammalian Cell Selection:	Neomycin
Vector:	pCMV6-AC-GFP (PS100010)
E. coli Selection:	Ampicillin (100 ug/mL)

ORF Nucleotide Sequence: >MG216165 representing NM_001130000
Red=Cloning site Blue=ORF Green=Tags(s)

TTTTGTAATACGACTACTATAGGGCGCCGGGAATTCGTCGACTGGATCCGGTACCGAGGAGATCTGCC
GCCGCGATCGCC

ATGGAGACAGGGAGCCCGGGTTGAACATGAAGCCCCAGTCCTTGCAGCTGGTGTGGAGGGGCAGGTGC
TGGCGCTGCAGCAGCAGATGGCCGAGAATCAGGCTGCCTCCTGGCGGAACTGAAGAACTCCAAGAGGC
CCAGAAGAGACAAGCAACCCTCGTGAGGAAGTGCAGGCCAAGTTTTACAGTACCGGAGCTGGTGTCAA
GACCTGGAGAAGCGACTAGAAGCCACTGGGGGCTGATCCCTCAGCGCTGGGAGAGTGTAGAAGAGCCCA
ACCTGGAACAGTTGCTGATCCGATTGGAGGAGGAGCAGCAGAGGTGTGAGAGTCTAGTGGAGGTGAACAC
CGAGCTTCGGCTGCACATGGAGAAAAGCCGATGTGGTGAATAAAGCCTTGCAGGAGGACGTGGAAAACTG
ACAGTGGACTGGAGTCGGGCCCGAGATGAGTTAGTGAGGAAGGAGAGCCAGTGGCGGATGGAGCAGGAGT
TCTTCAAGGCTATTTGAGAGGTGAACACGGTCGTCTTCTCAATCTATGGCGAGAGGTGTAACCTCCG
ACGTCACTTCTGAAAATGAAGTCAGTACTGACAGAGACCTGACAGAGCTAAAGGCTGAACACGCAAGG
CTTTCAGGGTCCCTGCTGACCTGCTGTCTGCGCCTGACCCTGAGAGCACAGTCTCGGGAGTCCAGTGGAT
CTGGGAGAACAGAGGAGAGTGAGCCAGCCCGGCTGCTGCTGCTCGCTAAGACCCAGGCGCTGGAGAA
GGAAGCCATGAGAAGAGCCAGGAGTTAATGCAGCTCAAGAGTACGGGGATCTAGAGAAGGCAGAGCTG
CAGGACCGAGTGACGGAACCTCTGCTCTGCTAACCAGTCTCAGAAGCAAAAATGAAGATTATGAGAAGA
TGGTAAAGGCTCTAAGAGAAAATGGAGATCCTGGAGACAAACCTGACAGTAAATGGAGCATGAGGC
ATCTCTCAGTAGGAATGCTCAAGAGGAAAAGTTGTCTCTGCAGCAGGTGATCAAGGCTATAACCCAGGCA
CTGGCCTCAGTGAAGAAGAAGACTGTGACCCAGTCTCAGGCCATGAGGACTCGCTGCAGTCAGACT
GTAATGGCCTTCCCAGTTGATCCCCAGGACCCAGACAGGGCTCTTACCCTGGTGCAGTCAAGTCTGAC
TCGGAGACAGCAGGCTGTGCAGGACCTCAGGCAGCAGCTTTCAGGCTGCCAGGAGGCTATGAGCTTCTTG
CAGCAGCAGCAGTCAAGTGGGAGGAAGAGGGCAGGGCCCTGAGGGAAAAGCTACAGAAGCTCACTGGGG
AGCGGGATGCTCTGGCAGGCCAGACTGTGGCCCTCAGGGAGAGGTGGACTCTCTACTGGGGAGCGGGA
TGCTCTGGCAGGCCAGACTGTGGACCTCAGGGAGAGGTGGACTCTCTCAGCAGGGAGCGGGAGCTGCTT
CAGAAGGCCAGAGGAGACTGCAGCAGCAACTGGAAGTGTGGAGCAGGAAGCGTGGCGACTGCGGAGGA



TGAACATGGAGCTGCAGCTGCAGGGGACTCAGCTCAAGGGGAGAAGCTGGAGCAGCAGGAGGAGTTGCA
CTTGGCTGTCCGGAGAGGGAGCGCCTTCAGGAGACGCTGGTGGCCTGGAAGCCAAGCAGTCAGAATCA
CTAAGTGAGCTGCTCACTCTTCGAGAAGCCCTGGAGTCAAGTCGCCTAGAAGGGGAGTTACTGAAGCAGG
AGCGAGTGGAAAGTGGCTGCAGCTTGGCCAGGGCAGAACAGTCCATTTGTGGAGCTGTCAAGTTTGTAGAA
CAGCCTGAAGGCAGAGGTAGCTGATCTTCAGAGCTGCAGCTGTCAAGCTTGGGGCCTTAAACGAGGCTTTG
GCTTTAGATAAAGTTGAACTGAACCAGCAGCTTCTCCAGTTGGAGCAGGAGAACCAGTCTCTATGCAGCA
GAGTGGAGGCCGAGAGCAGCTGAGAAGCGCTTTCAGGTGGACCTGGCGGAGGCAGAAAGCGCCAGGGA
AGCCCTGTGGGAGAAGAAAACCTCAGCTGGAGACTCAGCTGCAGAAGGCAGAGGAAGCGGGGCTGAGCTA
CAGGCAGAGCTGAGGGGCCACCCGAGAAGAAAAGGAAGAGCTTAAAGATAAAATTAAGTGAGGCACATCACC
AGCAAGAAACAGCTACAGCTCACCTAGAACAGCTGCATCAGGACGCAGAAAGACAGGAAGAAAACCTTGC
TAGGGCAGTCCAGGAGAAGGAAGCCCTAGTACGGGAGAGGGCAGCTCTTGAGGTGCGCCTGCAGGCTGTG
GAGCGGGACGCAGGACCTCACTGAACATGTCTGGGCTCAGGTGAGCCAAGGAGCAACTGAAGATTCAG
ATCTATTTGAGGCCAACAGCAAAAATCTGTGATACAGGTCACCAAGGGCAGCTGGAGTCCAGATTCA
AACTATTATCCAAGCCAAGGAAGTAAATCAAGGGGAAGTAAATGCCTGAAGCTGGAAGTGGATGCTGAG
AGGACCCGGCAGAGCAGGAGTGGATGCAGTAGCCAGGCAGCTAGCCAGCTGAGCAGGAGGGGCAAG
CATCTCTGGAGCGACAGAAGGTGGCCACGAGGAGGAGGTGAACAGGCTGCAAGAGAAAATGGGAGAAAGA
GCGCTCCTGGTGCAGCAGGAGCTGGATAAGACCTGGAAACCTCGAGAGGGAGAGAGCAGAGCTGGAG
ACAAAGCTGAGAGAGCAGCAGACAGAAAATGGAAGCCATCCGTGCACAGAGGGAAGAGGAACGAAGCCAGG
CTGACAGGCCCTGTATCAATGCAGCTAGAAAACAGAGAAGGAGAGAGTATCCCTCCTGGAGACTGCT
GAGGACCCAGAAGGAGCTGGCAGATGCTAGTCAACAGCTGGAAGGCTGAGACAGGACATGAAGATTCAG
AAGTTAAAGGAACAGGAGACCTGGCATGCTGCAGGCCAGCTTTCAGGAAACACAGCAGGAGCTGAAGG
AGGCAGCCAGCAGCACAGGGACGACCTTGTGCTTCCAGAAGGACAAGCTGGACCTGCAGAAGCAGGT
AGAGGACCTAATGTCTCAGCTGGTAGCCACGATGACTCCAGAGGCTGGTGAAGAAGAGATTGAAGAG
AAGGTGAAAGTGGCTCAAGAAATGCAGCCGATTGAGAAAGAACTGGAGAAAGAGAACGCCAGCCTGGCTC
TGTCGCTGGTGGAAAAGGAAAAACGACTTCTATTTTACAAGAAGCTGACTCTGTAAGACAGCAGGAGCT
GAGTCTCTTGCAGCAGGACATACAGAGGGCCAGGAAGGGCAAGAGAGCTGGGTGTACAGGTGGAACCTA
TTGAGGCAGGAGGTGAAGGAAAAGGAGGCTGACTTTGTGGCCGGGAAGCACAGCTGCTGGAGGAGTTGG
AGGCCTCACGGGTTGCAGAGCAGCAACTTCGAGCGTCTTTGTGGGCCAGGAAGCCAAGGCAACCCAGCT
GCAGCTGCAGCTGCGCAGCACTGAGAGCCAGCTAGAGGCATTGGTTGCAGAACAACAGCCGGAGAACCAG
GCACAGGCACAGCTAGCTAGCCTCTGCTGTTCTGCAGCAGGCCCTGGGTCTGCATGTGAGAGTAGGC
CTGAGCTGAGGGTGGAGGCGACTCTGCTCCTACCTTATGGGGCCTGATCCAGATCAGAATGGAGCTTC
CAGACTCTTTAAGAGATGGTCGCTCCCAACGGCACTGTACCAGGAGGCTGTGGCACTAGCTCCTCAGAAG
CTCCATCAGGACGTGTGGAAGGCTCGGCAGGCCGGGATGACCTAAGGGACCAGGTCCAGAAGCTGGTGC
AGCGCTGACTGACAGGAGGCCAGAAGGCCAGGTTCACTCGGAGCTGCAGGACCTGCAGAGACAGCT
CTCTCAGAGCCAGGAAGAGAAAATCCAAGTGGGAAGGGAGGCAGAACTCCCTGGAGTCTGAGCTGAGGGAC
TTGCACGAGACCCGGGCATCCTTACAGAGTCCGCTCCGGCAGGCAGAACTGCAAAAAAATGGAAGCTCAGA
ATGATCGAGAGTTGCTTCAAGCATCCAAGGAGAAGCTGTGAGCCAGGTTGAACATCTGCAAGCATGTGT
TGCAGAAGCCAGGCTCAGGCAGATGCAGCTGCTGCTGGAAGAAGATCTGCGAACTGCTCGCTCTGCA
CTGAAACTGAAAAACGAGGAGCTAGAGAGTGAACGGGAGAGAGCCAGGCTTTACAAGAACAGGGTGAAG
TGAAGGTGGCTCAGGGGAAAGCTTTGCAGGAGAACCTAGCCCTGTGGCACAGACCCTGTCTAACAGAGA
GCGGGAGGTGAGAGCTTGCAGGCTGAGGTTCAAGAACTGGAGAAGCAGCGGGAGATGCAGAAGGCTGCT
CTGGAGCTGCTCTCCCTCGACCTGAAGAAGCGCAGTCGGGAGGTAGACCTGCAACAAGAACAGATTCAAG
AGCTGGAGCAGTGCAGGTCAGTCTTAGAGCACTTGCCATGGCCGTCCAAGAGCGAGAGCAGAAAACCTGAG
TGTGCAGCGGACAGATCAGGGAAGTGGAGAAGCAGTCCGGAGGCCAGAGGAGTGTCTGGAAACACAG
CTTCTGGACCTGGAGCAGAAGGCTCAAGTGAAGTCCAGAGGGGACAGATTCAAGGATCTGAAAAAGC
AACTGGGGACACTGGAATGCCTGGCCCTGGAAGTGGAGGAAAGCCATCACAAAGTGGAGAGCCAACAGAA
GATGATCACAGAACTAGAGGGCCAGAGGAAAATGCAGAGGGTGGCTTAACCCACCTCACACTGGACCTG
GAAGAAAGGAGCCAGGAGCTGCAGGCACAAAGCAGCCAGCTCCATGAGCTGGAGAACCATAGCACCCATC
TGGCAAAAGAGCTGCAGGAGAGGGACAGGAGGTGACGTCCTCAACGCCAGCAGATCGATGAGCTGCAGAA
GCAGCAGGAACAGCTGGCTCAGGCCCTGGAGAGGAAAGGCCAGGAGCTGGTGTGCAGAAGGAAAGGATT
CAGGTTCTGGAAGATCAGAGGACGCTGCAGACCAAGATCTTAGAGGAGGACCTAGAACAGATCAAGCATT
CCTTGAGAGAACGCAGCCAGGAGCTGGCCCTCAGTGGCAGCTGGTGCATGAGCGTGGCCAGCAGTGGAAA
GAGCCCGAGTAAAGGCCAGCGAGGGAGCCTGGAGCACTTGAAGCTGATCCTGCGTGATAAGGAGAAGGAG
GTAGAGTGCCAGCAGGAGCGCATCCAGGAACTTCAGGGCCACATGGGCCAGCTGGAACAGCAGCTGCAGG
GTCTGCACAGGAAGTGGGGGAGACTAGCCTGCTCCTGACCCATCGAGAGCAGGAGACAGCAACCTGCA
GCAGCATCTCCAGGAAGCCAAGGAACAAGGGAACTGAGAGAGCAGGTAATTCAGGCTCAGCTGGAGGAG

GCCCAGAGAGATCTGGCCAGAGGGACCATGAACTAGAGACCTCCGGCAGGAAAAACAGCAGACCCAGG
ACCAGGAGGAAAGCATGAAGCTAAAGACAAGTGCTCTGCAGGCCGCTCTGGAGCAGGCCCATGCGACACT
GAAGGAGCGTCAGGGGAGCTGGAAGAACAAGGGAACAGGTGCGAAGGCTCCAGGAAGAACTAGAAGTG
GAGGGACGGCAGGTACGGGCCCTGGAGGAGGTGTTGGGGACCTAAGGGCTGAGTCTCGGGAGCAGGAGA
AGGCTGTGCTGGCCCTTCAACAACGGTGTGCTGAGCAGGCCAGGAACATGAGGCAGAAGCCAGGACCCT
GCAGGACAGCTGGCTGCAGGCCAGGCCACTCTCACAGAACAAGAACAAGAGCTAGCGGCACTGCGAGCG
GAAAACAGTATCCCGCCGACAGGAAGAGGCTGCAGTTAGCCAGGCAGAGGCGCTGCAGGAGGCCCTCA
GCAAAGCCAGGCTGCCCTGCAGGAGAAAGAGCAGAGTCTGCTTGAACAGGCTGAGTTGAGCCACACCCT
GGAGGCCAGCACTGCCGCTTGAAGCTACCCCTGGACACCTGCCAGGCAAGTGCCTGGCAGCTGGAGGAG
GCCCTGAGGATTCGGGAAGGTGAGATCCAGGCCAGGCTCTCCAACACCACGAGGTACGCGACGACCTCC
AGCAGGAACTTTCCAGAAGAAGAAGAGCTGAGGCAGCTACTAGAGAAGGCTGGGGCCCGGAGGAGTCA
AGAAAATGGAATCCAAGAGAAGCAAAAGTCTGGAGCAAGAGAGACAAGAGGAAAACAAGGAGGCTCCTTGAG
AGCCTAAAGGAGCTACAGCTGACTGTAGCCAAAAGGGAAGAAGAGATTCTGATGCTGAGGGAGGCCCTCGT
CCCCACGCCACAGAGCCCTCCAGCCGAGAAGCCAGCTCTGCAACCCTCCAGCACAAACAGGAGTTAGA
GCGGCTGCAGACTGCCCTAAGGCAACAGAGGCCAGGAGATTGAATGGAGGGAGAAGGCTCAGGACCTG
GCTCTGTCCCTGGCCAAAGCAAGGCCAGCATCAGCAGTCTGCAGGAGATAACCATGTTCTACAAGCCT
CTGTTCTAGAGCGGGAATCAGAACAACAAAGACTACAGGAGGAGTTGGTACTCAGCAGACAAGCTCTGGA
AGAGCAGCAGTCAGGTGGCCACACTCAACCAGCAGAGCAGACCAGGGACCAAAAGTGGGACAGGGAAGC
CAGTCTGGAGAGGTAGAGACTGAGCCTAGTCTGGAGTGGAGGAGAAGGAACGGTTGACACAGAGGCTTG
AACGTCTGCAGCAAGCGGTGGCAGAGCTGGAAGTTGACCGAAGCAAGCTGCAGTGCCACAATGCGCAGCT
GCGGACCGCCTTGGAGCAGGTGGAACGAGAACGGAGGAAGCTGAAGAGGGATTCCGTGCGTGCATCCCGG
GCAGGATCACTGGAGGCCAGAGAACTATGACTTCATCCCCACACAGCAGGATGGGAGAGGCAGTCAGA
GGGTTCTCGGACAGCGTGTGTGGTTGAGCTTCAGAGAGAGGTAGCCCTGCTGCGAGCCAGCTGGC
CTTGGAGCGAAAGCAGAGGCCAGGACTACATTGCACGGTCCGTGCAGACCAGCCGTGAGCTAGCAGGCCTG
CATCACAGCCTGTCTACTCCCTCCTCACCCTGGCCAGGCCCTGAGGCCACTGTTCTGGAGGCTGAGA
CCCGAAAGCTGGATGAGTCTCTGAATCAGAGTCTGACATCCCAGGGCCATGTTTGCTACATCCCAGTCT
GGACACTACTCAAATACCCACAGG

ACGCGTACGCGGCCGCTCGAG - GFP Tag - GTTTAA

Protein Sequence:

>MG216165 representing NM_001130000

Red=Cloning site Green=Tags(s)

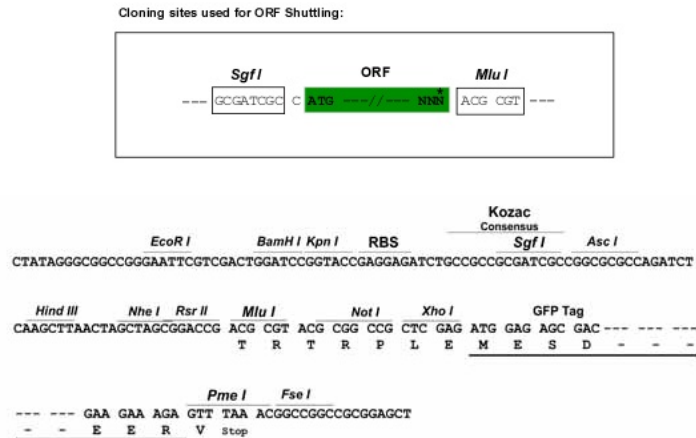
```

METGSPGLNMKPQSLQLVLEGGVQLALQQQMAENQAASWRKLNKSQEAQKRQATLVKRLQAKVLQYRSWCQ
DLEKRL EATGGLIPQRWESVEEPNLEQLLIRLEEEQQRCELSLVEVNTLRLHMEKADVVNKALQEDVEKL
TVDWSRARDELVRKESQWRMEQEFFKGYLRGEHGRLLNLWREVVTFRHFLLKMKSATDRDLTELKAEHAR
LSGSLTCCLLRLTLRAQSRESSSGSRTTEESEPARLLLLVAKTQALEKEAHEKSQELMQLKSHGDLEKAE
LQDRVTELSALLTQSQKQNEDEYKMKALRETMEILETNHAELMEHEASLSRNAQEEKLSLQQVIKAITQA
LASVEEEDTVTQSSGHEDLSQSDCNLSQFDPQDPDRALTLVQSVLTRRQAVQDLRQQLSGCQEAMSF
LQQQHDQWEEGRALREKLQKL TGERDALAGQTVGLQGEVDSL TGERDALAGQTVDLQGEVDSL SREREL
LQKARGELQQQLEVL EQEAWRLRRMNMELQLQGD SAQGEKLEQQEELHLAVRERERLQETLVGLEAKQSE
LSELLTLREALSSRLEGE LKQERVEVAAALARA EQSIVELSGSENSLKAEVADLRAAAVKLGALNEAL
ALDKVELNQQLLQLEQENQSLCSRVEAAEQLSALQVDLAEERRREALWEKKTQLETQLQKAAEEAGAEL
QAELRGTRREEKEELKDKLSEAHHQETATAHLEQLHQDAERQEETLARAVQEKEALVRERAALVRLQAV
ERDRQDLTEHVLGLRSAKEQLESNLF EAQQQNSVIQVTKGQLEVQIQTI IQAKEVIQGEVKCLKLELDAE
RTRAEQEWDAVARQLAQAEQEQASLERQKVAHEEEVNRLQEKWEKERSWLQQELDKTLETLETEREALE
TKLREQQTEMAIRAQREEERSQADSALYQMLETEKERVSLLETLLRTQKELADASQQLERLRQDMKIQ
KLKEQETTGM LQAQLQETQQELKEAAQHRDDLAAFQKDKLDLQKQVEDLMSQLVAHDDSQRLVKEEIEE
KVKVAQECRSRIQKEL EKENASLALSVEKEKRLILQEADSVRQQLSSLRQDIQEAQEGQRELGVQVEL
LRQEVKEKEADVFVAREAQLEELEASRVAEQQLRASLWAQEAQATQLQLRSTESQLEALVAEQOPENQ
AQAQLASLCSVLQQALGSACESRPELRGGGDSAPTLWGPDPDQNGASRLFKRWSLPTALSPEAVALALQK
LHQDVWKAQRADDL RDQVQKLVQRLTDTEAQKSQVHSELQDLQRQLSQSQEESKWEGRQNSLESELRD
LHETAAASLQSR LRQAE LQKMEA QNDRELLQASKEKLSAQVEHLQACVAEAQAQADAAA VLEEDLRTARSA
LKLKNEELESERERAQALQE QGELKVAQKALQENLALLAQTL SNREREVETLQAEVQELEKQREMOKAA
LELLSLDLKKSREVDLQEQEQIQELEQCRSVLEHLPMAVQEREQKLSVQRDQIRELENDREAQRSVLEHQ
LLDLEQKAQVIESQRGQIQDLKKQLGTLECLALELEESHKVESSQKMI TELEGQREMQRVALTHLTLDL
EERSQELQAQSSQLHELENHSTHLAKELQERDQEVTSQRQQIDELQKQEQLAQALERKGGQELVLQKERI
QVLEDQRTLQTKILEEDLEQIKHSLRERSQELASQWQLVHERADDGKSPSKGQRGSL EHLKILRDKKEKE
VECQQERIQELQGHMGQLEQQQLQGLHRKVGETSLLLTHREQETATLQQHLQEAKEQGELEQVQLQGGLEE
AQRDLAQRDHELETLRQEKQQTQDQEE SMK LKTSALQAALQAHATLKERQGELEEHREQVRRLEEEV
EGRQVRAL EEVLDLRAESREHEKAVLALQQRCAEQAEHEAEARTLQDSWLQAQATLTEQEQLAALRA
ENQYSRRQEEAAVSQAALQEALSKAQAALQEKEQSLL EQAELSHTLEASTAALQATLDTQCASARQLEE
ALRIREGEIQAQALQHHEVTQHLQQELCQKKEELRQLLEKAGARRSQENGIQEQQSLEQERQEETRRLL
SLKELQLTVAQREEEILMLREASSPRHRALPAEKPALQPLPAQQELERLQTALRQTEAREIEWREKAQDL
ALSLAQSKASISSLQEI TMFLQASVLERESEQQRLQEELVLSRQALEEQSSGGPHSTSRADQGPKVGGGS
QSGEVE TEPSPGV EKERL TQRLERLQQAVAELEVDRSKLQCHNAQLRTALEQVERERRKLRDSVRASR
AGSLEARETMTSSPTQQDGRGSRGSSDSVLVVELQREVALLRAQLALERKQRQDYIARSVQTSRELQGL
HHSLSHSLLTVAQAPEATVLEAETRKLDES LNQSLTSPGPCLLHPSLDTTQNTHR
    
```

TRTRPLE - GFP Tag - V

Restriction Sites:

SgfI-MluI

Cloning Scheme:


ACCN: NM_001130000

ORF Size: 7305 bp

OTI Disclaimer: The molecular sequence of this clone aligns with the gene accession number as a point of reference only. However, individual transcript sequences of the same gene can differ through naturally occurring variations (e.g. polymorphisms), each with its own valid existence. This clone is substantially in agreement with the reference, but a complete review of all prevailing variants is recommended prior to use. [More info](#)

OTI Annotation: This clone was engineered to express the complete ORF with an expression tag. Expression varies depending on the nature of the gene.

Components: The ORF clone is ion-exchange column purified and shipped in a 2D barcoded Matrix tube containing 10ug of transfection-ready, dried plasmid DNA (reconstitute with 100 ul of water).

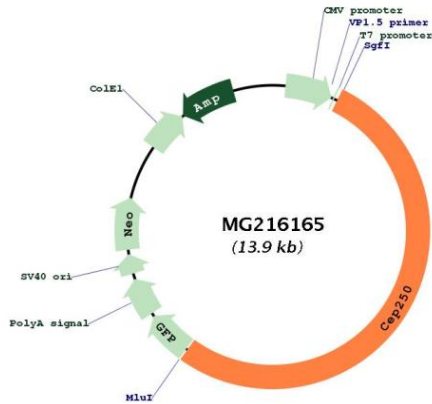
- Reconstitution Method:**
1. Centrifuge at 5,000xg for 5min.
 2. Carefully open the tube and add 100ul of sterile water to dissolve the DNA.
 3. Close the tube and incubate for 10 minutes at room temperature.
 4. Briefly vortex the tube and then do a quick spin (less than 5000xg) to concentrate the liquid at the bottom.
 5. Store the suspended plasmid at -20°C. The DNA is stable for at least one year from date of shipping when stored at -20°C.

Note: Plasmids are not sterile. For experiments where strict sterility is required, filtration with 0.22um filter is required.

RefSeq: [NM_001130000.1](#), [NP_001123472.1](#)

RefSeq Size:	7977 bp
RefSeq ORF:	7308 bp
Locus ID:	16328
Cytogenetics:	2 H1
Gene Summary:	May be involved in ciliogenesis. Probably plays an important role in centrosome cohesion during interphase.[UniProtKB/Swiss-Prot Function]

Product images:



Circular map for MG216165