

## Product datasheet for **MG216153**

### **Sft2d3 (NM\_026006) Mouse Tagged ORF Clone**

#### Product data:

**Product Type:** Expression Plasmids  
**Tag:** TurboGFP  
**Symbol:** Sft2d3  
**Synonyms:** 2610206C24Rik; A1847965; AW046173  
**Mammalian Cell Selection:** Neomycin  
**Vector:** pCMV6-AC-GFP (PS100010)  
**E. coli Selection:** Ampicillin (100 ug/mL)

**ORF Nucleotide Sequence:** >MG216153 representing NM\_026006  
Red=Cloning site Blue=ORF Green=Tags(s)

TTTTGTAATACGACTACTATAGGGCGCCGGGAATTCGTCGACTGGATCCGGTACCGAGGAGATCTGCC  
GCC**GCGATCGCC**

ATGGCGGATCTCCACCGCCAGCTGCAAGACTACCTGAAGCAGGGGAAAGCGAGCAGGCCGGCGGCCGAG  
AGCCGCTGCTCGGCGCGAAGGCAGCAGAGGAGCCTGAGGCCGGGGCCTGGCTAGGCAGCAGGGTTCTGCC  
ATGGCCGTGGGCACAGAGCGCTGCCGAGCCGCCACCCGCGGGCTTGCCTGCCCTCCCGAGCGTGACGCGA  
GGCCAGCGCCTGGTGGCGGGCGCCGTGTGTCTGCTGCTGGCCGCGCTCTGCTTGGCCTGGCGGCGCTCT  
ACGCGCCGGTGTCTGCTGCTGCGCGCGCAAGTTCGCGCTCCTCTGGTCTGGGCTCGGTGCTGGCGTG  
GGCAGCGCGGCGCTGCTGCGGGCGGCCCGCGTGCAGCCGCTGCTACGCGCGAGGAGACGCCCTCG  
CGGAGCACGCTTGGCTACGCCCGCCCTTGGCGCCACGCTCTACGCCGCGCTGGTCTGCGCAGTACGG  
TGCTGACGGCGCTCGGCGCTTGCACAGGTAGCCGCGCTGCTCTACGCGTTGATCGGGCTCCTGCCCTG  
GGCGGTGTGACGGCGCTGCGACTGGCGCTCGGTGCCTAAATCGCGGGACTGGCCTAGCCAACGCGCTC  
CCGGTG

AG**CGGACCG**ACGCGTACGCGGCGCTCGAG - GFP Tag - GTTTAA

**Protein Sequence:** >MG216153 representing NM\_026006  
Red=Cloning site Green=Tags(s)

MADLHRQLQDYLKQKASRPAAAEPLLAKAAEEPEAGAWLGSRLRWPWAQSAEPPPAGLRCLPSVTR  
GQRLVAGGLCLLLAALCFGLAALYAPVLLLRARKFALLWSLGSVLAWASAALLRGGPACGRLLRGEETPS  
RSTLGYAAALGATLYAALVLRSTVLTALGACAQVAALLYALIGLLPWGGVTALRLALGRLNRGTGLANAL  
PV

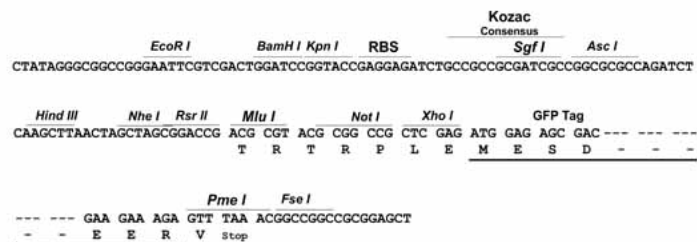
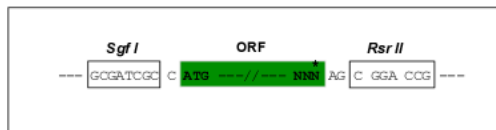
SGPTRRRLE - GFP Tag - V



**Restriction Sites:** SgfI-RsrII

**Cloning Scheme:**

Cloning sites used for ORF Shuttling:



**ACCN:** NM\_026006

**ORF Size:** 636 bp

**OTI Disclaimer:** The molecular sequence of this clone aligns with the gene accession number as a point of reference only. However, individual transcript sequences of the same gene can differ through naturally occurring variations (e.g. polymorphisms), each with its own valid existence. This clone is substantially in agreement with the reference, but a complete review of all prevailing variants is recommended prior to use. [More info](#)

**OTI Annotation:** This clone was engineered to express the complete ORF with an expression tag. Expression varies depending on the nature of the gene.

**Components:** The ORF clone is ion-exchange column purified and shipped in a 2D barcoded Matrix tube containing 10ug of transfection-ready, dried plasmid DNA (reconstitute with 100 ul of water).

**Reconstitution Method:**

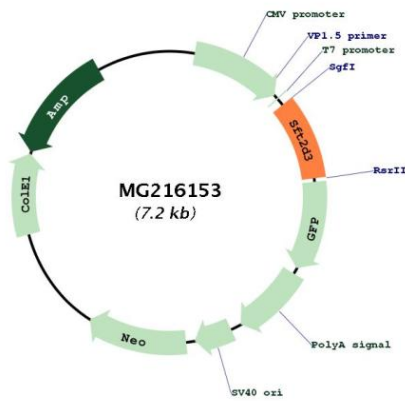
1. Centrifuge at 5,000xg for 5min.
2. Carefully open the tube and add 100ul of sterile water to dissolve the DNA.
3. Close the tube and incubate for 10 minutes at room temperature.
4. Briefly vortex the tube and then do a quick spin (less than 5000xg) to concentrate the liquid at the bottom.
5. Store the suspended plasmid at -20°C. The DNA is stable for at least one year from date of shipping when stored at -20°C.

**Note:** Plasmids are not sterile. For experiments where strict sterility is required, filtration with 0.22um filter is required.

**RefSeq:** [NM\\_026006.1](#), [NP\\_080282.1](#)

RefSeq Size:	2810 bp
RefSeq ORF:	639 bp
Locus ID:	67158
UniProt ID:	<a href="#">Q9CSV6</a>
Cytogenetics:	18 B1
Gene Summary:	May be involved in fusion of retrograde transport vesicles derived from an endocytic compartment with the Golgi complex.[UniProtKB/Swiss-Prot Function]

**Product images:**



Circular map for MG216153