

Product datasheet for **MG216149**

Wdr62 (NM_146186) Mouse Tagged ORF Clone

Product data:

Product Type:	Expression Plasmids
Product Name:	Wdr62 (NM_146186) Mouse Tagged ORF Clone
Tag:	TurboGFP
Symbol:	Wdr62
Synonyms:	2310038K02Rik; b2b1508Clo
Mammalian Cell Selection:	Neomycin
Vector:	pCMV6-AC-GFP (PS100010)
E. coli Selection:	Ampicillin (100 ug/mL)
ORF Nucleotide Sequence:	>MG216149 representing NM_146186 Red=Cloning site Blue=ORF Green=Tags(s)

TTTTGTAATACGACTCACTATAGGGCGGCCGGAATTCGTCGACTGGATCCGGTACCGAGGAGATCTGCC
GCC**CGATCGCC**

ATGATGGCTGCCTTAGCGGCCGGAGGTTATACGCGGAGTGACACGATAGAAAAGCTGTCCTCTGTCATGG
CGGGAGTTCGGCGCGGAGAAACCAGTCTCCCGCCTCTGCCACCCTCTGCCTCCGGCGCGGAC
GCGACTCGCGCGGCTCCCGAGGACTGTGCAGAACCGGTGACTTGAGAAGGTGCTTGGCATCACA
GCCCAGAACAGCAGCGGGCTAACCTGTGACCCTGGCACAGCCATGTGGCCTACTTAGCAGGTGCGTGG
TGGTGGTCTTGAACCCCAAGGAGAACAAGCAGCAGCATATATTTAACACAACCAGGAAGTCCCTGAGTGC
TCTGGCCTTCTCCCAGATGGGAAGTACATAGTGACAGGAGAGAATGGACACCGCCAGCTGTGCGCATC
TGGGATGTGGAGGAGAAGACTCAAGTGGCAGAGATGCTGGGCCACAAGTATGGTGTGGCCTGTGTGGCTT
TCTCACCAATATGAAGCACATCGTGTCCATGGGCTACCAACATGACATGGTCTCAATGTTGGGATTG
GAAGAAAGACATTGTGGTGGCTTCCAACAAGGTGTGATGATGAGTGTGAGGTTTGGTCTTAGAAGCCTCTACTGAGGCCA
AGGTAACCAGCACAGTGGCCCTGGTAGGACGCTCAGGCATCCTGGGTGAGCTGCACAACAATATCTTTTG
TGGCGTGGCCTGCGGCCGGGCGGATGGCAGGCAATACCTTCTGTGTCTACTCTGGCCTCCTCTGC
CAGTTCATGAGAAAAGGTGCTGGACAAGTGGATCAACCTGAAGTCTCCTTGTCTTCCCTGCTGTGTG
TCAGTGACGAGTTGATCTTCTGTGGATGCACAGACGGGATAGTCCGCATCTCCAGGCCACAGCCTACT
CTACCTCACCAACCTGCCAAACACACTACCTGGGAGTGGACGTGGCCACGGACTGGACTCCAGCTTC
CTTTCCACAGAAAAGCAGAAGCAGTCTACCCAGATACAGTGGCCCTGACCTTTGACCCCGTCCACCAGT
GGCTGTCTGTGTTTACAAAGACCACAGCATCTACATCTGGGATGTCAAGGACATTGATGAAGTCAGCAA
GATATGGTCAGAGCTCTCCACAGCTCCTTTGTCTGGAATGTAGAGGTGTACCCTGAATTTGAAGACCAG
AGAGCTTGCCGTCGGGACTTTTCTGACTTGTTCCTCAGACAATACCATCCGCTTCTGGAATTTGG
ATAGCGCCTCTGACTCGATGGCAAAAGAATCTTCAGCGATTCTCTGCTGAAGTGGTCTATGTAGA
GAATGACATCCAGCACCTGCAGGACCTGTCTACTTCCAGACCGGGCAGTGAGAACGGCACTCCCATG



View online »

GATATGAAAGCTGGGGTTCGAGTCATGCAGGTCAGTCCTGACGGCCAGCACTTGGCTTCAGGCGACCCGA
GTGAAATCTGAGGATCCACGAGCTGCACTTCATGGATGAGCTGATCAAGGTGGAGGCCACGATGCTGA
GGTGTGTGCCTGGAGTACTCCAAGCCTGAGACAGGAGTGACTTTGCTGGCTTCAGCCAGTCGGGACAGA
CTCATCCATGTGTTAAACGTGGAGAAGAACTACAACCTGGAGCAGACCCTGGACGACCCTCCTCCTCCA
TCACAGCCATTAAGTTTGTGGCACCAGAGATGTCAGATGATCAGTTGTGGAGCTGACAAGAGCATCTA
CTTTCGCAGTCCCAGCAGGCCCTCGATGGACTGCACTTTGTCCGTACCCACCAGTACGAGAGAAGACC
ACCTTGTATGACATGGATATCGACATCACACAGAAGTATGTGGCAGTGGCCTGCCAGGACCGCAACGTAA
GGGTCTACAACACCGTGAGTGGGAAACAGAAGAAGTGCTACAAGGGTTCCAGGGCGACGAAGGGTCCCT
GCTGAAGGTCCACGTGGACCCCTCAGGCACCTTCTGGCCACAAGCTGCTCTGACAAAAGCATCTCCTTG
ATTGACTTTTACTCGGGCGAGTGTGTTGCCAAGATGTTTGGCCATTTCGAAATTGCTACTGGCATGAAGT
TCACCTACGACTGCCCACTTGATCACAGTATCTGGAGACAGCTGTGTTCATCTGGCACCTGGGCC
GGAGATCACCACTGCATGAAGCAGCACTTGTGGAGATCAACCACCAGGAGCAGCAGCAGCAGCCAAAG
GACCAGAAGTGGAGTGGCCCTCCAGCCAGGAGACATATGCATCCACCAAGTGAAGTTCGTTCCCTGA
GCCCTGGAGAGCAGACAGAGGATGAGATGGAGGAGGAATGTGAGCCAGAAGAGTTGCTGAAAACACCATC
CAAAGACAGCTTGGACCCAGATCCTCGATGCCTGCTGACAAATGGCAAGCTGCCACTCTGGCAAAGCGG
CTGCTAGGGGATGATGATGTGGCAGACAGCTCAGCTTCCACGCCAAGCCAGCTACCAGCCACATGGCC
GTTGGGCAGAGCGGGCTGAGCAGGAACCCCTCAAGACCATCCTGGATGCCTGGAGCCTGGATTCTACTT
TACACCCATGAAGCCTGAAAATCTCAAGACTCTGTTCTGGACTCAGTAGAGCCACAGAACCTGGCAGGC
CTGCTAAGTGAGTGTTCCTCGGTAATGGACACACGTCTCCGGGAGAAGGCTTGGTGAGCTACCTACTTC
ACCCAGAGTTAGGGAGTCCCAAAGAGGACAACCCAGGCCACCCCTCCTACCTGCCTACAGAGGGGAAGC
CACCGAGGCAAGCGAAGTCACTCTGCTCCCCAGAGGCGGAAGTGTCACTTACAGGGATGCACAGGGAG
TATTATGAGGAGGAGACAGAGGAGGACTGAAGACCAGCAAGGGCAGACCTATCTCAGGGTCTCTTCCG
TCAGTTCAAAGGATCAGAGCCCCCTGAGACTCAGGGGAGTCAAGGCTGAAGTGGAGTGCAGTCTTTC
CGCCGCCACAGCTCAGCTCCTCAAACGGACCCTGGCCCTCACCTACCATGACAGCAGGTAAAGCCAGAG
TACCCAAGTACAGAAGAGCTTCCAGCCTGAGCTGCCAGGCTTGGGCAATGGCTCCTTACCCAGACAC
CTGAGCAGGAGAAGTTCCTCCGCCACCATTTTGGAGACTTACTGATGCCCTACTGAAGAGCTCTTTCA
TGGATCCTGGGAGACATAAAGATCTCAGAGACTGAGGACTATTTCTTCAATCCCGGCTGAGCATATCC
ACCCAGTTCCTCTCCGCCTCCAGAAGACTCCAGGTGCCCTCCCGACTGCCCTGCACCTTATGAAGT
CTCCAGAGGCTCAGCCTGTGGGCAAGGGGCAACCAGCCAAAGCAGGGCCCTGAGAGCAGGACTG
CTACATGTCTCAGATGGGACCAACGTCTCTCTGGGCAAGGCTGAAGAACTCAAGAGGCTTGAAGT
CTACTGGACAGGAAGCCTCCAACACCCACATCTGTACTGACCACAGGCCGGGAGCAAAGTATCTCCGCC
CATCTTGTGTTCTTACCTGGAGTCCACAACGAGCTCACATGCCAAGACGACACGACAGCATCTCTTTGG
GGACAGTGAGGGCCCTGTGACAGCTGAGCTACCCAGTCACTTACAAGCCCTTATCCCCTGGCCAGGAA
CTCCAAGCCATCCCCTACTACAGTGGCACTGACCTCCAGCATCAAAGACCAGGACCTGCACCGCTTTCCT
GGGGCAACCATGAGGCCCGAGCCAGCCTGAAACTGACCTTATCCAGTGTCTGTGAGCAGCTGCTCTCTCC
ACCTCCACAGGAGCCACCCATCACCCATGTGTGGTCTCAGGAACCTGTGGATGTCCACCTAGTATGGCA
GTCACAGTAGCCAGCTTCTGTGCACCCAGCCCTGTAGACATGAGCACCCTGGGACTCCACAGTTCATGT
TTCTCCAAAGACCTCAGCCTCTGGGCCCTAACCCTCCTGCCACCTCCAACCTTAGAGACCAGGTC
TAGGGTGCCTGGCAGCACTGCTGCTCCTGGAGCCCACCCCGATGCATCAGGTGTGATCGCAGACAGC
CCTGGCACTGGGACACAGAAGTCCCTACCCAGAAGTCCCTAGGCAGTGTGGAATCAGTCTTGACAGGC
TGACAGCTGCCTTCCAAGAAGCTCTTGACCTTTACCGCATGCTGGTCTCCAGCAGCCAGCTGGGTCTGA
GCAGCAGCAGGCACAGACCGAGCTGGCCTCCACCTTCCACTGGATCCTCAACCAGCTAGAAGCCAGCAAC
TGTATGGCTGCAGCTAATTGGCCCCACCCAGACACTGCCTAGCCAGACCCTGTCCCTACCTACAC
TTTGTCCCTGGCCAGCCAAACCTGCAGGCCCTGCTGGAACACTACTCAGAGTTGCTGGTGAAGCAGT
GAGGAGGAAGGCAAGGGGTGAC

ACGCGTACGCGGCCGCTCGAG – GFP Tag – GTTTAA

Protein Sequence: >MG216149 representing NM_146186
 Red=Cloning site Green=Tags(s)

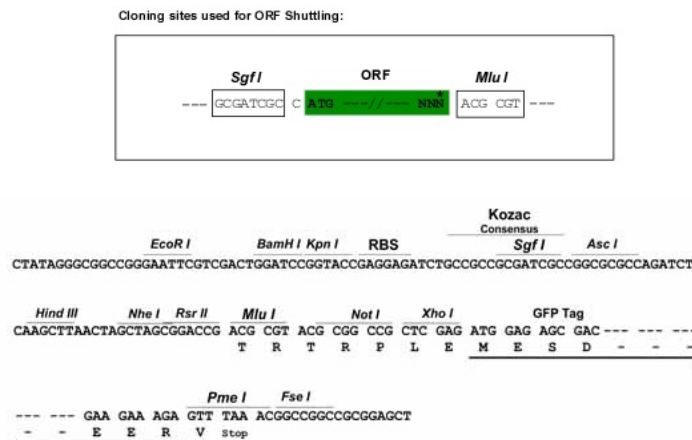
MMAALAAGGYTRSDTIEKLSVSMAGVPARRNQSSPPPAPPLCLRRRTRLAAAPEDTVQNRVTLEKVLGIT
 AQNSSGLTCDPGTGHVAYLAGCVVVVLPKKNKQHI FNTTRKSL SALAFSPDGKYIVTGENGHRPAVRI
 WDVEEKTQVAEMLGHKYGVACVAFSPNMKHIVSMGYQHDMVLNVWDWKKDII VVASNKVSCRVIALSFSED
 SSYFVTVGNRHVRFWFLEASTEAKVTSTVPLVGRSGILGELHNNIFCGVACGRGRMAGNTFCVSYSGLLC
 QFNEKRVLDKWINLKVSLSSCLCVSDELIFCGCTDGIVRIFQAHSLLYLTNLPKPHYLGVDAHGLDSSF
 LFHRKAEAVYPDPTVALTFDPVHQWLSCVYKDHSIYIWDVKDIDEVSKIWSELFHSSVFNVEVYPEFEDQ
 RACLPSGTFLTCSNDNTIRFWNLDSASDTRWQKNIFSDSLLKVVYVENDIQHLQDL SHFPDRGSENGTPM
 DMKAGVRVMQVSPDGQHLASGDRSGNLRHELHFMDL IKVEAHDAEVL CLEYSK PETGVTL LASASRDR
 LIHVLNVEKNYNLEQTLDDHSSSITAIK FAGTRDVQMISCGADKSIYFRSAQQASDGLHFV RTHHVAEKT
 TLYDMDIDITQKYVAVACQDRNVRYNTVSGKQKCYKGSQGDGESSLLKVHVDPSTGFLATSCSDKSI SL
 IDFYSGECVAKMFGHSEIVTGMKFYDCRHLITVSGDSCVFIWHLGPEITTCMKQHLL EINHQQQQPK
 DQKWSGPPSQETYASTPSEIRSLSPGEQTEDEMEEECEPEELLKTPSKDSLDPDPRCLL TNGKLP L WAKR
 LLGDDDVADSSAFHAKRSYQPHGRWAERAEQEPLKTILDWASLDSYFTPMKPENLQDSVLDVSEVQNLAG
 LLSECSLGNIGHTSPGEGLYSYLLHPELGSPKEDNRGHP SYLPLQREATEASELILCSPEAEVSLTGMHRE
 YEEETEAGPEDQQGDTYLRVSSVSSKDQSPPEDSGESEAELECSFAAAHSSAPQDTPGPHLTMTAGKPE
 YPSTEELSQPEL PGLGNGSLPQTPEQEKFLRHHFETL TDAPTEELFHGSLGDIK ISETEDYFFNPRLSIS
 TQFLSRLQKTSRCPRLPLHLMKSPAQPVGQGNQPKAGPLRAGTGYMSSDGTNVL SGQKAEETQEALS
 LLDRKPPPTSVLTTGREQSI SAPSSCSYLESTTSSHAKTTRSISLGDSEGPVTAELPQSLHKPLSPGQE
 LQAIPTTVALTSSIKDHEPAPLSWGNHEARASLKLTLSSVCEQLL SPPPQEPPI THVWSQEPVDVPPSMA
 VTVASFCA SPVDMSTLGLHSSMFLPKTSASGPLTPPAHLQ LLETRSRVPGSTAALLEPTPDASGVIADS
 PGHWDTEVPTPELLGSVESVLHRLQTAFQEALDLYRMLVSSSQLGPEQQQAQTELASTFHWILNQL EASN
 CMAAANLAPPQTLSPDPLSLPTLCPLASPNLQALLEHYS ELLVQAVRRKARGD

TRTRPLE - GFP Tag - V

Chromatograms: https://cdn.origene.com/chromatograms/ja1411_a04.zip

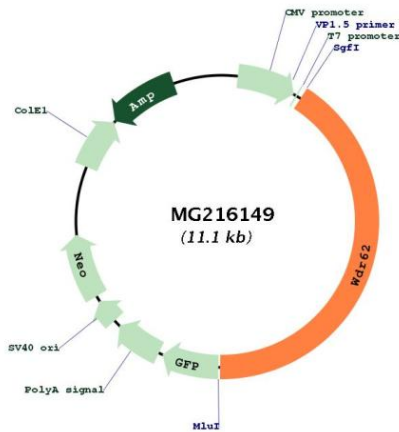
Restriction Sites: SgfI-MluI

Cloning Scheme:



ACCN: NM_146186

ORF Size:	4572 bp
OTI Disclaimer:	The molecular sequence of this clone aligns with the gene accession number as a point of reference only. However, individual transcript sequences of the same gene can differ through naturally occurring variations (e.g. polymorphisms), each with its own valid existence. This clone is substantially in agreement with the reference, but a complete review of all prevailing variants is recommended prior to use. More info
OTI Annotation:	This clone was engineered to express the complete ORF with an expression tag. Expression varies depending on the nature of the gene.
Components:	The ORF clone is ion-exchange column purified and shipped in a 2D barcoded Matrix tube containing 10ug of transfection-ready, dried plasmid DNA (reconstitute with 100 ul of water).
Reconstitution Method:	<ol style="list-style-type: none"> 1. Centrifuge at 5,000xg for 5min. 2. Carefully open the tube and add 100ul of sterile water to dissolve the DNA. 3. Close the tube and incubate for 10 minutes at room temperature. 4. Briefly vortex the tube and then do a quick spin (less than 5000xg) to concentrate the liquid at the bottom. 5. Store the suspended plasmid at -20°C. The DNA is stable for at least one year from date of shipping when stored at -20°C.
RefSeq:	NM_146186.3 , NP_666298.3
RefSeq Size:	4744 bp
RefSeq ORF:	4575 bp
Locus ID:	233064
Cytogenetics:	7 B1

Product images:


Circular map for MG216149