

Product datasheet for **MG216139**

Tdpoz2 (NM_001007222) Mouse Tagged ORF Clone

Product data:

Product Type:	Expression Plasmids
Tag:	TurboGFP
Symbol:	Tdpoz2
Mammalian Cell Selection:	Neomycin
Vector:	pCMV6-AC-GFP (PS100010)
E. coli Selection:	Ampicillin (100 ug/mL)

ORF Nucleotide Sequence: >MG216139 representing NM_001007222
Red=Cloning site Blue=ORF Green=Tags(s)

TTTTGTAATACGACTCACTATAGGGCGCCGGGAATTCGTCGACTGGATCCGGTACCGAGGAGATCTGCC
GCC**CGGATCGCC**

ATGTCAGGGGACATGGAAGCCAAGATCTGGGGCTCCACACAGATCAGTGTTAAGGAATTCGCTATGAGT
GGACCATTAGCAACTTTTCATTTTGCATGGGGGAATTAGGAGAAAGATTAAGCCAGTGTCTCCTT
AGAGGCCAATGAGGAAGTGGCCTGGTGTGAGAGTACACCCAAACGGGTTTGATGAAGAAAAGCAAAGAT
TACCTGTCAGTTTACCTGGTGTGGTCAACTGCCAAAGAGACAAGTTAGGGCAAAGTTGAATTCGGA
TCAAAAATCCCAAGGAGAGAAATACCAATATACGCAGAGCTTGAATGTCCTAGCTTTCAGAGAAAGCA
AACTGGGGATTCAGTAAGTTCATCCTTCGAGATTCCTCCTCCTCCCATCGGAATTGGCTTCTACCTAAA
GACAAGCTCACCTCTGCTGCAAGGTGAGCATAGTAGGAGCCATCTTAAACATGCCTGGACAGAACATGA
TACCTGCAATCAAGGATCCAAGACACATGTTGACAGATGACCTAGGCAAGCTGTGGGAGAATTCCTCTT
CACAGACTGCTCCTGTTGGTAGCTGGCCATGAATTCAGGGCTCACAAAGTTATCCTAGCAGCTCGCTCT
CCAGTTTTCAGAGCCATGTTTGAACCTCAAATGGAAGAGAGACTAGCAAAGCTTTGAGATCCAGGAGC
TGGATTTTCAAGTCTTTAAAGAGATGATGGACTTCATCTACACTGGGAAGGCTCCAACCTCCATAGCCA
CTCCATGGCCTGTGATGTGCTGGCAGCTGCTGACAAGTATGGCCTTGAGGGCTTGAAGGTATATGTGAG
GATTCCTCTGCAGGAACGCTCTCTGTGGAGAATGCTGCACACACTCTCATCGTGGTGACCTCCATAGCA
CAGAGCAGCTGAAGACTCGGGCTCTCCATTTTCATTGCAGTTCATGCTTCTGAGGTCTCTAAAAGCTCCGG
GTGGAAGTCAATGGTGGAGTCCCATCCCACCTTGGTGGATGAAAGATTCGCTCCCTGGCTTCTGCACAG
TGTTTTCTGGAGTCATCATTCAAACGCCT

ACCGGTACGCGGCCGCTCGAG - GFP Tag - GTTTAA



Protein Sequence: >MG216139 representing NM_001007222
 Red=Cloning site Green=Tags(s)

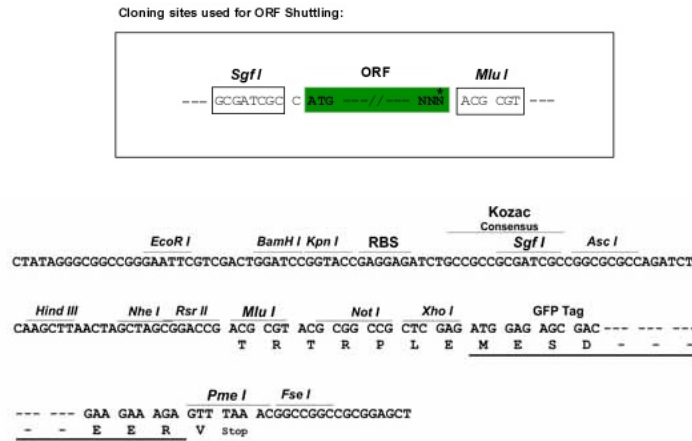
MSGDMEAKIWGSTQISVKEFCYEWITISNFSFCMGGIRRKIKSPVFSLEANEVAVCLRVHPNGFDEESKD
 YLSVYLVLVNCPRQVRAKFEFWIKNSQGEKYQYTQSLNVPSPQRKQNWGFSKFILRDSLLSHRNWLLPK
 DKLTLCKKVSIVGAILNMPGQNMIPA IKDPRHMLTDDLKGLWENSLFTDCSLLVAGHEFRAHKVILAARS
 PVFRAMFEPQMEERLANCFEIQELDFQVFKEMMDFIYTGKAPTLHSHSMACDVLAAADKYGLEGLKVICE
 DSLCRNVSVENAAHTLIVADLHSTQLKTRALHFIAVHASEVSKSSGWKSMVESHPLVDERFRSLASAQ
 CFLGVIIQTP

TRTRPLE - GFP Tag - V

Chromatograms: https://cdn.origene.com/chromatograms/ja3440_a03.zip

Restriction Sites: SgfI-MluI

Cloning Scheme:

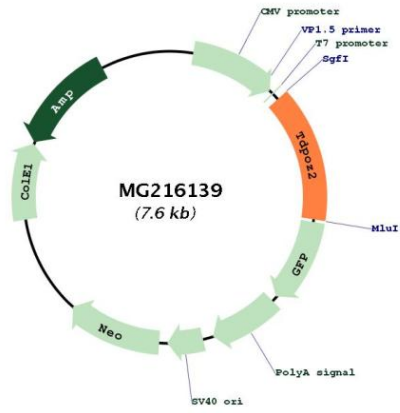


ACCN: NM_001007222

ORF Size: 1080 bp

OTI Disclaimer:	<p>Due to the inherent nature of this plasmid, standard methods to replicate additional amounts of DNA in E. coli are highly likely to result in mutations and/or rearrangements. Therefore, OriGene does not guarantee the capability to replicate this plasmid DNA. Additional amounts of DNA can be purchased from OriGene with batch-specific, full-sequence verification at a reduced cost. Please contact our customer care team at custsupport@origene.com or by calling 301.340.3188 option 3 for pricing and delivery.</p> <p>The molecular sequence of this clone aligns with the gene accession number as a point of reference only. However, individual transcript sequences of the same gene can differ through naturally occurring variations (e.g. polymorphisms), each with its own valid existence. This clone is substantially in agreement with the reference, but a complete review of all prevailing variants is recommended prior to use. More info</p>
OTI Annotation:	<p>This clone was engineered to express the complete ORF with an expression tag. Expression varies depending on the nature of the gene.</p>
Components:	<p>The ORF clone is ion-exchange column purified and shipped in a 2D barcoded Matrix tube containing 10ug of transfection-ready, dried plasmid DNA (reconstitute with 100 ul of water).</p>
Reconstitution Method:	<ol style="list-style-type: none">1. Centrifuge at 5,000xg for 5min.2. Carefully open the tube and add 100ul of sterile water to dissolve the DNA.3. Close the tube and incubate for 10 minutes at room temperature.4. Briefly vortex the tube and then do a quick spin (less than 5000xg) to concentrate the liquid at the bottom.5. Store the suspended plasmid at -20°C. The DNA is stable for at least one year from date of shipping when stored at -20°C.
Note:	<p>Plasmids are not sterile. For experiments where strict sterility is required, filtration with 0.22um filter is required.</p>
RefSeq:	<p>NM_001007222.3, NP_001007223.2</p>
RefSeq Size:	<p>1145 bp</p>
RefSeq ORF:	<p>1083 bp</p>
Locus ID:	<p>399673</p>
Cytogenetics:	<p>3 F2.1</p>

Product images:



Circular map for MG216139