

Product datasheet for **MG216137**

Pde1c (NM_001159953) Mouse Tagged ORF Clone

Product data:

Product Type:	Expression Plasmids
Product Name:	Pde1c (NM_001159953) Mouse Tagged ORF Clone
Tag:	TurboGFP
Symbol:	Pde1c
Mammalian Cell Selection:	Neomycin
Vector:	pCMV6-AC-GFP (PS100010)
E. coli Selection:	Ampicillin (100 ug/mL)



[View online »](#)

ORF Nucleotide Sequence:

>MG216137 representing NM_001159953
 Red=Cloning site Blue=ORF Green=Tags(s)

TTTTGTAATACGACTCACTATAGGGCGGCCGGAATTCGTGCGACTGGATCCGGTACCGAGGAGATCTGCC
 GCC**CGATCGCC**

ATGGAGTCTCAACCAAGGAAATTGAAGAATTCGAGAGCAACTCTCTGAAACACCTGCAACCTGAGCAGA
 TCGAGAAAATCTGGCTTCGGCTCCGCGGGCTGAGGAAATATAAGAAAACGTCCCAGAGGTTACGGTCTTT
 GGTCAAGCAATTAGAACGAGGAGAGGCCTCTGTGGTAGACCTTAAGAAGAATCTGGAATATGCAGCCACA
 GTGCTTGAATCTGTATATATTGATGAAACAAGCGACTGCTGGATACAGAGGATGAGCTTAGTGACATTC
 AATCAGATGCTGTGCCTCAGAAGTTCGGGATTGGCTGGCTCCACCTTCACACGCAGATGGGGATGAT
 GCTTAGGAGAAGTGATGAGAAGCCAGGTTCAAGAGCATCGTCCATGCGGTGCAAGCTGGGATATTTGTG
 GAAAGAATGTACAGACGGACATCAAACATGGTTGGGCTGAGCTATCCACCGGCTGTAATCGATGCATTGA
 AGGATGTGGATACGTGGTCTTCGATGTCTTTCCCTCAATGAGGCCAGTGGAGATCATGCACTGAAGTT
 CATTTTCTATGAATTACTCACACGTTATGACCTGATCAGCCGTTTTAAGATACCGATTTCTGCATTGTC
 TCAATTTGTGGAGGCCCTCGAAGTGGTTACAGCAAGCACAAAAATCCTTACCATAACCTGATGCATGCAG
 CTGACGTCACACAGACTGTGCATTACCTCCTTTATAAGACAGGAGTAGCAAACCTGGCTGACAGAGCTGGA
 GATCTTTGCAATAATCTTTTCGGCTGCCATCCATGACTATGAACATACTGGAACACAAAATTTCCAC
 ATTCAGACTCGGTGAGATCCAGCTATCCTGTACAATGACAGATCTGTCCTGGAGAACCACCACCTGAGTG
 CAGCCTACCGCCTTCTGCAGGAAGACGAAGAGATGAATATTCTGGTTAACCTCTCAAAGGATGACTGGAG
 GGAGTTTCGAACCTTTGGTTATTGAGATGGTAATGGCCACAGATATGTCCTGTCAATTTCCAGCAAATCAA
 GCCATGAAGACAGCCCTGCAGCAACCAGAAGCAATTGAGAAGCCGAAAGCCTTATCCCTCATGTTACACA
 CAGCAGACATCAGTCATCCTGCGAAAGCATGGGACCTGCACCAGGCTGGACCATGTCTCTCCTGGAGGA
 GTTCTTTAGACAGGGTGACAGAGAAGCAGAGCTGGGGCTGCCATTTTCTCCTTTTGTGACAGAAAAGTCA
 ACCATGGTTGCTCAGTCACAAGTGGGTTTTATTGACTTATTGTGGAGCCACCTTCACTGTGCTCACGG
 ACATGACCGAGAAGATTGTGAGTCCATTAATTGACGAAAGCTCCCAGACTGGTGGACAGGGCAGAGGAG
 ATCAAGTTTGAACAGCATCAACTCATCAGATGCAAAGCGATCCGGTGTCAAGAGTTCTGGGTCAGATGGA
 AGTGCTCCCATCAACAATTCTGTCATTCTGTTGACTATAAGAGTTTTAAAGCCACTTGGACTGAGGTGG
 TGCAGATCAATCGGGAGCGGTGGCGAGCCAAGGTACCCAAAGAAGAAAAAGCCAAGAAGGAAGCTGAAGA
 GAAGGCTCGCCTGGCTGCTGAGGAAAAGCAAAAGGAAATGGAAGCCAAAAGCCAAGCTGAACAAGGCACA
 ACCAGCAAAGGCGAGAAAAGACATCAGGAGAAGCCAAAAGTCAAGTCAATGGAACACGCAAGGGTGATA
 ACCCTCGTGGGAAGAACTCCAAAGGAGAAAAGGCAGGCGAAAAGCAGCAGAACGGTGACTTGAAAGACGG
 TAAAAATAAGGCAGACAAGAAGGATCACTCCAACACCGGAAATGAGTCAAAGAAAACAGATGGTACAAGG
 AAGCGTTCTATGGCTCACCTGCTCCGAGCACTAGTTCACAAGTCGCATTACCTTGCCAGTCATCAAGC
 CTCCTTTGCGTCACTTTAAGCGTCTGCTTATGCATCTAGCTCCTATGCACCTTCCGTCCCGAAGAAAAC
 TGATGATCATCTGTAAGATACAAGATGCTGGATCAGCGGATCAAGATGAAAAAGATCCAGAACATCTCT
 CATCACTGGAACAAAAA

ACGCGTACGCGGCCGCTCGAG - GFP Tag - GTTTAA

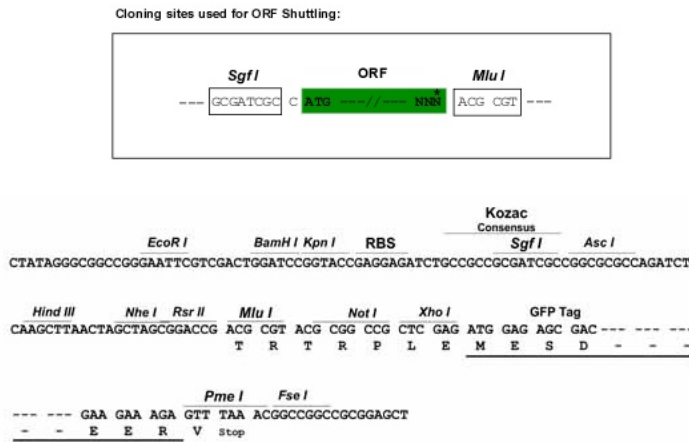
Protein Sequence: >MG216137 representing NM_001159953
Red=Cloning site Green=Tags(s)

MESPTKEIEEFESNSLKHLLQPEQIEKIWLRLRGLRKYKKTSQLRSLVKQLERGEASVVDLKKNLEYAAT
VLESVYIDETRRLLDTEDELSDIQSDAVPSEVRDWLASTFTRQMGMLRRSDEKPRFKSIVHAVQAGIFV
ERMVYRRTSNMVGLSYPPAVIDALKDVDTSFDFVSLNEASGDHALKFIYELLTRYDLISRFKIPISALV
SFVEALEVGYSKHKNPYHNLMAADVTQTVHYLLYKTGVANWLTELEIFAIIFSAAIHDIYEHTGTTNNFH
IQTRSDPAILYNDRSVLENHHL SAAAYRLQDEEMNILVNL SKDDWREFRTLVIEMVMATDMSCHFQQIK
AMKTALQQPEAIEKPKALSLMLHTADISHPAKAWDLHHRWTMSLLEEFFRQGDREAELGLPFSPLCDRKS
TMVAQSQVGFIDFIVEPTFTVL TDMTEKIVSPL IDESSQTGGTGQRRSSLNSINSSDAKRSQVSSGSDG
SAPINNSVIPVDYKSFKATWTEVVQINRERWRKVPKEEKAKKEAEKARLAAEEKQKEMEAQSQAEGGT
TSKGEKTSGEAKSQVNGTRKGDNPRGKNSKGEKAGEKQNGDLKDGKNKADKKDHSNTGNESSKTDGKT
KRSHGSPAPSTSSTRITLPVIKPLRHFKRPAYASSSYAPVPKKTDHHPVRYKMLDQRIKMKKIQNIS
HHWNKK

TRTRPLE - GFP Tag - V

Restriction Sites: SgfI-MluI

Cloning Scheme:

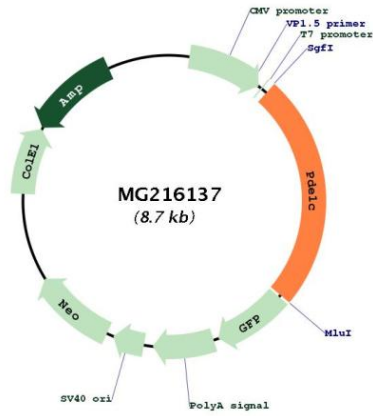


ACCN: NM_001159953

ORF Size: 2118 bp

OTI Disclaimer:	Due to the inherent nature of this plasmid, standard methods to replicate additional amounts of DNA in E. coli are highly likely to result in mutations and/or rearrangements. Therefore, OriGene does not guarantee the capability to replicate this plasmid DNA. Additional amounts of DNA can be purchased from OriGene with batch-specific, full-sequence verification at a reduced cost. Please contact our customer care team at custsupport@origene.com or by calling 301.340.3188 option 3 for pricing and delivery.
	The molecular sequence of this clone aligns with the gene accession number as a point of reference only. However, individual transcript sequences of the same gene can differ through naturally occurring variations (e.g. polymorphisms), each with its own valid existence. This clone is substantially in agreement with the reference, but a complete review of all prevailing variants is recommended prior to use. More info
OTI Annotation:	This clone was engineered to express the complete ORF with an expression tag. Expression varies depending on the nature of the gene.
Components:	The ORF clone is ion-exchange column purified and shipped in a 2D barcoded Matrix tube containing 10ug of transfection-ready, dried plasmid DNA (reconstitute with 100 ul of water).
Reconstitution Method:	<ol style="list-style-type: none"> 1. Centrifuge at 5,000xg for 5min. 2. Carefully open the tube and add 100ul of sterile water to dissolve the DNA. 3. Close the tube and incubate for 10 minutes at room temperature. 4. Briefly vortex the tube and then do a quick spin (less than 5000xg) to concentrate the liquid at the bottom. 5. Store the suspended plasmid at -20°C. The DNA is stable for at least one year from date of shipping when stored at -20°C.
RefSeq:	NM_001159953.1 , NP_001153425.1
RefSeq Size:	3907 bp
RefSeq ORF:	2121 bp
Locus ID:	18575
UniProt ID:	Q64338
Cytogenetics:	6 27.65 cM
Gene Summary:	Calmodulin-dependent cyclic nucleotide phosphodiesterase with a dual-specificity for cAMP and cGMP, which are key regulators of many important physiological processes (PubMed:8810348). Exhibits high affinity for both cAMP and cGMP (By similarity). Modulates the amplitude and duration of the cAMP signal in sensory cilia in response to odorant stimulation, hence contributing to the generation of action potentials. Regulates smooth muscle cell proliferation. Regulates the stability of growth factor receptors, including PDGFRB (Probable).[UniProtKB/Swiss-Prot Function]

Product images:



Circular map for MG216137