

## Product datasheet for **MG216109**

### Pelp1 (NM\_029231) Mouse Tagged ORF Clone

#### Product data:

Product Type:	Expression Plasmids
Product Name:	Pelp1 (NM_029231) Mouse Tagged ORF Clone
Tag:	TurboGFP
Symbol:	Pelp1
Synonyms:	4930563C04Rik; MNAR
Mammalian Cell Selection:	Neomycin
Vector:	pCMV6-AC-GFP (PS100010)
E. coli Selection:	Ampicillin (100 ug/mL)
ORF Nucleotide Sequence:	>MG216109 representing NM_029231 Red=Cloning site Blue=ORF Green=Tags(s)

TTTTGTAATACGACTCACTATAGGGCGGCCGGAATTCGTCGACTGGATCCGGTACCGAGGAGATCTGCC  
GCC**CGATCGCC**

ATGGCGCGGCCGTTCTTAGTGGGGCTCTGCGGGCTCCCGAGCTGGGGCTCCTGGCGGGCCGGGGGTC  
TCTCTGCGGTGGGATCCGGCCCGCTGCTGCTGCTGTTAGAGAGCATTCCGGGTTGTACAGCC  
GCGAACGGCGTCCCCGTGGCCCTGTGCATCCCCAATCCAGTGGGCCCGCATTGGCCGGGCTCATG  
TGCTTATTGAGGCTGCATGGGACGGCAGGTGGGGCGAGAATCTTCAGCTCTGGGGCATTGGTGAATC  
TCAGTAATGCACATCTTGCTCCATCAAACCTCGGTTTGAAGGCCTGTGTCTGCTGCTCTGTTGATAGG  
GGAGAGCCCCACAGAGTTATTCCAGCAACATTGTGTTTCTGGCTTCGGAGCATCCAGCAGGTGCTGCAG  
TCTCAGGACTCACCGTCCACCATGGAGCTGGCTGTGGCTGCTCCTGAGGGATCTGCTCCGACATGCATCCC  
AGCTTCTACCTGTTTCGGGACATCTCCACCAACCACCTTCTGGGCTTCTTACTTCTTGTGGGCT  
CAGACCAGAGTGTGAACAATCAGCTTGGAGGGAATGAAGGCTTGTGTGACCTATTTTCTCGGGCTGT  
GGCTCTCTAAAGGAAAGCTGGCTTCTTTTCTGTCTCGATTGGATTCCCTGAACCTCAGCTCCAAC  
AGCTGGCTGCGAGTGTACTCCAGGTTGCCCTCGTTAGGTGCTGGCTTTCCAGGGACTGAAGCACAC  
AGAGAAGTGGGAACAGGAGCTGCACAGCCTGCTGACCTCACTGCACAGCTTACTGGGGTCCCTGTTTGG  
GAAACAGAGCCTGCTCCTGTGCAGAGTGAAGCCCTGGAATAGAGATGCTGCTTTCCACTCAGAAGATG  
GTAACCCATGTCCTCCTCCAGCTTCGGCAGAGGTTTTTCAGGCCTGGCCGTTGCTGGGGCTCATGCT  
CAGCTCTGAGTTTGGGGCTCCTGTGTCGTTTCTGTGCAGGAAATCCTGGACCTCATCTGCCGGATCCTT  
GGTATCAGTAGCAAGAATATTAACCTGCTTGGAGATGGTCCCCTCAGGTTGCTGCTGCTGCTTCTCTGC  
ACCTTGAGGCTTGGACTTGCTCTGCGCTGATCCTTGGGTGGAAGTCGACTTTTGGCTTTTGGTGC  
CCTGATCAGCCGGCTGCTCCCCAGGTTCTCAATGCCTGGAGCACTGGGAGGGATACTCTAGCTCCAGGC  
CAGGAGAGGCTTACAGCACCATTCCGACCAAAGTGTATGCTATCTTAGAGCTATGGGTGCAGGTTTGTG  
GGGCTCAGCAGGTATGCTTCCAGGAGGAGCCTCTGGAGAAGCCTTGTCAACCCACCTGCTCAGTGACAT  
CTCCCCTCCAGCTGATGCTTAAAGCTATGCAGTACCAGGGAAGCTCTGATGGAGGTTTCAAAGTGGG



[View online >](#)

AAGCCAAGTGCTCCTAAGAAGCTCAAGCTCGATATGGGGGAAGCTTTGGCTCCACCCAGCCAAAGGAAAG  
 GAGATAGGAATGCCAACAGTGACGTGTGCGCAGCTGCACTGAGAGGCCTCAGTCGGACCATCCTTATGTG  
 CGGGCCTCTCATCAAGGAGGAGACTCACAGGAGACTTCATGATCTAGTCTGCCCTGGTCATGAGTGTG  
 CAGCAGGGTGAGGTCTGGGCAGCTCTCCTTACAACAGTTCTGTGTGCGCTCGGGCTCTACCCGCTGC  
 TGCTGGCTTTATTGCTGGCACCTTCCCCCGGTGCCCTCCTCCTTGGCTGTGCCCTGAAAGCTTTCTC  
 TCTTGGCCAATGGGAAGATAGTCTTGTAGGTCTCCTCTTTTTGCTCAGAAGCTCTGGTGACCTGTGCTGCT  
 CTGACACACCCCGAGTACCTCCTCTACAGAGCTCAGGCCCTGCCTGCCCACTCTGCCCTGCTCCCTC  
 CTCTGAGGCCCATCTTCATTACAGGGCCCGGCTTCCATCCTCCAGGCCCATGCCCTCCATAGGTGC  
 TGTGCCATCCACAGGCCATTACCTCAGCAGGCCCATTCACACAGTAGGCTCTATGGCGTCCACAGGC  
 CAAGTGCCCTCTCGCCCTGGACCTCCAGCAACAGCCAACCATTTAGGCCTCTCTGTCCCAGGCCTGGTAT  
 CTGTTCCACCCAGGCTCCTTCTGGCCCTGAAAACCACCGTGCAGGCTCCGGTGAGGATCTGTCTTGC  
 TCCTAGTGGGACCCCTCCGCTAGCATACTCCAGATGAAACTTTTGGGGGAGAGTACCTAGGCCAGCC  
 TTTGTCCACTACGATAAGGAGGAGGCATCTGATGTAGAGATCTCCTTGGAAAGCGACTCTGATGACAGTG  
 TGGTGATTGTACCTGAGGGGCTTCCCTCCTGCCACCTGCACCACCTCAGGCACCTCTCCCTGCGGC  
 TCCTGCCGGCCCAACAGCCTCACCTCCTGTGCCAGCTAAGGAGGATTCTGAAGAAGTGCCTGCAACC  
 CCAGGGCCTCCACCCCAACCCCAACCCCAACCCCAACCCCAACCCGCTCTGGTCTGTGACACTTCTCCACCC  
 AGCTGGTCCCTGAAGGGACTCCTGGAGGGGAGGACCCACAGCCATGGAAGAAGATTTGACAGTTATTAA  
 TATCAACAGCAGTGATGAAGAGGAGGAGGAGGAAGAGGAAGAGGAGGAAGAAGATGAAGATGAGGAAGAA  
 GAAGACTTTGAGGAAGAGGAAGAAGATGAAGAAGAATATTTTGAAGAGGAAGAAGAGGAAGAAGAGTTT  
 AGGAGGAATTTGAGGAGGAAGAAGTGAATTAGAAGAGGAAGAAGAAGAGGAGGAAGAAGAGTTAGATGA  
 GGTAGAAGATGTGGAGTTTGGTTCAGCAGGGGAGGTGGAAGAAGTGGACCTCCACCCCAACACTGCCA  
 CCTGCTGCCACCTTCACTCGCCAAAGTACAGCTGAGGCAGAACCTGAACCTGGGCTCTTATTGG  
 AAGTTGAGGAGCCAGGGCCAGAGGAGGTGCTGGGCTGAGACTGCTCCTACCCTGGCCCTGAAGTGTG  
 CCCTCCAGGAGGAGGGGAGCAGGAAGTGGGAAGCCCTGCAGCAGGGCCACCTCAGGAGCTTGTGAA  
 GAGTCTCTGCTCCCTGCCCTGCTGGAAGAGGGGACTGAGGGTGGAGGTGACAAAGTGCACCCCCAC  
 CGGAGACACTGCAGAAGAAATGGAGACAGAAGCAGAAGTCCAGCTCCTCAGGAAAAGGAGCAAGATGA  
 TACAGTGCATGCTGGCTGATTCATCGATTGTCCCTGACGATGAGAAGCCACCACCTGCTACAGAG  
 CCTGACTCG

ACGCGTACGCGGCCGCTCGAG – GFP Tag – GTTTAA

**Protein Sequence:**

>MG216109 representing NM\_029231  
 Red=Cloning site Green=Tags(s)

MAAAVLSGASAGSPAGAPGGPGGLSAVSGPRLRLLLLLESISGLLQPRTASPVAPVHPPIQWAPHLPLGLM  
 CLLRLHGTAGGAQNL SALGALVNL SNAHLGSIKTRFEGLCLLSLLIGESPTFLFQQHCVSWLRSIQQVLQ  
 SQDSPSTMELAVAVLRDLLRHASQLPTLFRDISTRNHLPGLLTSLGLRPECEQSALEGMKACVTYFPRAC  
 GSLKGLASFFLSRLDSLNPQLQQLACECYSRLPSLGAGFSQGLKHTENWEQELHSLTSLHSLGLSLE  
 ETEPAPVQSEPGIEMLLSHSEDNTHVLLQLRQRF SGLARCLGLMLSSEFGAPVSVPVQEILDLCRIL  
 GISSKNINLLGDGPLRLLLLPSLHLEALDLLSALILACGSRLRFGALISRLLPQVLNAWSTGRDTPAG  
 QERPYSTIRTKVYAILELWVQVCGASAGMLQGGASGEALLTHLLSDISPPADALKLCSTRGSSDGGQLQSG  
 KPSAPKLLKLDMGALAPPSQRKGDRNANSVCAALRGLSRTILMCGPLIKEETHRRHLDLVPLVMSV  
 QQGEVLGSSPYNSSCCRLGLYRLLLALLLAPSPRCPPLACALKAFSLGQWEDSLEVSSFCSEALVTCAL  
 LTHPRVPLQSSGPACPTAPVPPPEAPSSFRAPAFHPPGMPMSIGAVPSTGPLPSAGPIPTVGSMASTG  
 QVPSRPGPPATANHLGLSVPGLVSVPPRLLPGPENHRAGSGEDPVLAPSGTTPPSIIPDETFGGRVPRPA  
 FVHYDKEEASDVEISLESDDSVVIVPEGLPSLPPAPPSGTPPPAAPAGPPTASPPVPAKEDSEELPAT  
 PGPPPPPPPPPPASGPVTLPPPQLVPEGTPGGGPTAMEEDLTVININSDEEEEEEEEEEEDEDEEE  
 EDFEEEEEEDEEYEEEEEEEEFEFEEFEEEGELEEEEEEEEEELDEVEDVEFGSAGEVEEGPPPTLP  
 PALPPSDSPKVQPEAEPEPGLLLEVEEPGPEEVPGETAPTLAPEVLPSEQEEGEVQVSPAAAGPPQELVE  
 ESSAPPALLEEGTEGGDKVPPPPETPAEEMETEAEVPAPQEKEQDDTAAMLADFIDCPPDDEKPPPPATE  
 PDS

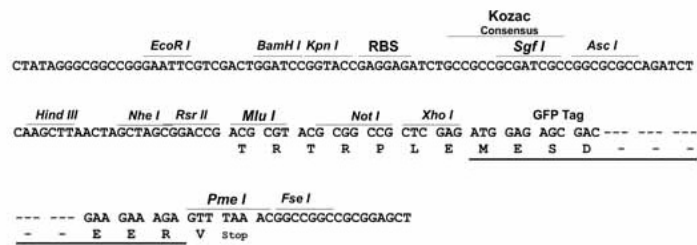
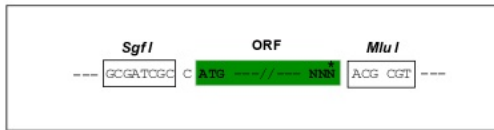
TRTRPLE – GFP Tag – V

Restriction Sites:

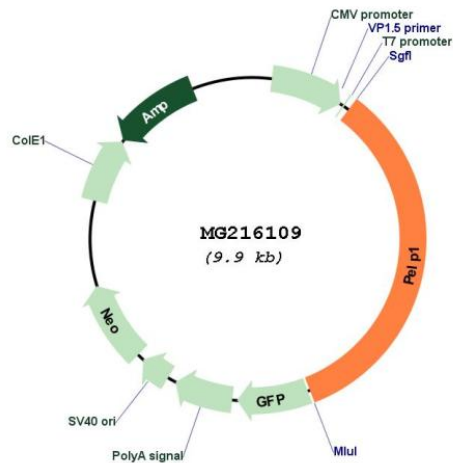
SgfI-MluI

Cloning Scheme:

Cloning sites used for ORF Shuttling:



## Plasmid Map:



ACCN: NM\_029231

ORF Size: 3369 bp

OTI Disclaimer: The molecular sequence of this clone aligns with the gene accession number as a point of reference only. However, individual transcript sequences of the same gene can differ through naturally occurring variations (e.g. polymorphisms), each with its own valid existence. This clone is substantially in agreement with the reference, but a complete review of all prevailing variants is recommended prior to use. [More info](#)

OTI Annotation: This clone was engineered to express the complete ORF with an expression tag. Expression varies depending on the nature of the gene.

Components: The ORF clone is ion-exchange column purified and shipped in a 2D barcoded Matrix tube containing 10ug of transfection-ready, dried plasmid DNA (reconstitute with 100 ul of water).

Reconstitution Method:

1. Centrifuge at 5,000xg for 5min.
2. Carefully open the tube and add 100ul of sterile water to dissolve the DNA.
3. Close the tube and incubate for 10 minutes at room temperature.
4. Briefly vortex the tube and then do a quick spin (less than 5000xg) to concentrate the liquid at the bottom.
5. Store the suspended plasmid at -20°C. The DNA is stable for at least one year from date of shipping when stored at -20°C.

RefSeq: [NM\\_029231.4](#), [NP\\_083507.3](#)

RefSeq Size: 3463 bp

RefSeq ORF: 3372 bp

Locus ID: 75273

UniProt ID: [Q9DBD5](#)

Cytogenetics: 11 B3

**Gene Summary:**

Coactivator of estrogen receptor-mediated transcription and a corepressor of other nuclear hormone receptors and sequence-specific transcription factors. Plays a role in estrogen receptor (ER) genomic activity when present in the nuclear compartment by activating the ER target genes in a hormonal stimulation dependent manner. Can facilitate ER non-genomic signaling via SRC and PI3K interaction in the cytosol. Plays a role in E2-mediated cell cycle progression by interacting with RB1. May have important functional implications in ER/growth factor cross-talk. Interacts with several growth factor signaling components including EGFR and HRS. Involved in nuclear receptor signaling via its interaction with AR and NR3C1. May promote tumorigenesis via its interaction with and modulation of several oncogenes including SRC, PI3K, STAT3 and EGFR. Plays a role in cancer cell metastasis via its ability to modulate E2-mediated cytoskeleton changes and cell migration via its interaction with SRC and PI3K (By similarity). Functions as the key stabilizing component of the Five Friends of Methylated CHTOP (5FMC) complex; the 5FMC complex is recruited to ZNF148 by methylated CHTOP, leading to desumoylation of ZNF148 and subsequent transactivation of ZNF148 target genes (PubMed:22872859). Component of the PELP1 complex involved in the nucleolar steps of 28S rRNA maturation and the subsequent nucleoplasmic transit of the pre-60S ribosomal subunit. Regulates pre-60S association of the critical remodeling factor MDN1 (By similarity). [UniProtKB/Swiss-Prot Function]