

Product datasheet for **MG216094**

Naip2 (NM_010872) Mouse Tagged ORF Clone

Product data:

Product Type:	Expression Plasmids
Product Name:	Naip2 (NM_010872) Mouse Tagged ORF Clone
Tag:	TurboGFP
Symbol:	Naip2
Synonyms:	Birc1b; Naip-rs6
Mammalian Cell Selection:	Neomycin
Vector:	pCMV6-AC-GFP (PS100010)
E. coli Selection:	Ampicillin (100 ug/mL)
ORF Nucleotide Sequence:	>MG216094 representing NM_010872 Red=Cloning site Blue=ORF Green=Tags(s)

TTTTGTAATACGACTCACTATAGGGCGGCCGGAATTCGTCGACTGGATCCGGTACCGAGGAGATCTGCC
GCC**CGATCGCC**

ATGGCAGCCCAGGGAGAAGCCGTTGAGGAGATAATTTGTGAGTTTGATGACGACTTGGTCTCTGAGCTCT
CTACTCTTCTCAGAGTGGATGCACTTTTCAGTCTTGAAGAGACAACAAGAAGAAGACCATAAAACACGAAT
GAAAATGAAGAAAGGTTTTAACTCACAGATGCGCAGTGAAGCCAAACGACTAAAGACTTTTGAGACCTAT
GACAAGTTCAGATCATGGACGCCACAGGAGATGGCAGCTGCTGGGTTTTACCACACAGGGGTGAAACTTG
GGTTCAGTGCTTTTGTGTAGCTTGATCCTCTTTCCACCAGACTCAGGAAACTTCCCATAGAGAACCA
CAAGAAATACGACCAGAATGTGAGTTCCTTCTGGGCAAAGATGTTGGTAACATTGGCAAGTATGACATC
CGGTTAAGAGTCCAGAGAAGATGCTGAGAGGTGACAAAGCAAGTACCATGAAGAGGAGCAAGACTGG
AGTCCTTTGAGGACTGGCCATTTATGCCCATGGGACATCACCACGTGTACTCTCAGCAGCTGGCTTTGT
CTTTACAGGTAAGGGACACTGTGAGTGTCTCCTGTGGTGGATGCTTGGGCAACTGGGAAGAAGGA
GATGATCCCTGGAAGGAGCATGCCAAGTGGTCCCAATGTGAATTTCTCAAAGTAAGAAGTCCCGAG
AGGAAATACCAATATGTACAAAGCTATGAAGATTTCTCATGTAACGGGAGAACATTTGTGAATTC
CTGGGTGACAAGAGAATTACCTATGGTATCAGCTTACTGCAATGACAGCGTCTTCGCTAATGAAGAACTA
AGGATGGACAGCTTTAAGGACTGGCCCCACGAATCACCCGGGGCTGTTGAAGCTCTGGTCAAAGCAGGCC
TTTTCTACACAGGCAAAAGGGACATTGTCCAGTGTCTTCTGTGGAGGATGTATGGAGAAGTGGGCAGA
AGGTGACAACCAATAGAAGATCACACCAAGTTTTTCCCAACTGTGTTTTCTCAAACCTGAAGTCC
TCTGCAGAAGTGATCCAGCCCTCAGAGCCACTGTGCACTTCCAGAAGCCATGGAACCACAAGTGAAA
GCAACCATGATGATGCAGCAGCAGTTCATTCTACAGTGGTGGATGTTTCTCAAAGTGAAGCCAGGAACT
TGAACCTGCATCCAGCTTGGTGTCTGTTCTGTAGAGACCAGGACCACAGTGAAGCCAAAGGGCGTGGA
TGTGCATCCAGTGGACCTATCTCCCTCCACAGACTTGGGTGAGTGAAGCCAGTGGCTTCAAGAGG
CCAGGAGTCTGAGTGAGCAGCTGAGAGACCTACACCAAGCTACTTTCCGCCACATGAACCTGCCAGA
AGTGTACTCCAGCTCGGCACTGACCATTGCTCAGCTGCGATGTGCCATCATTTCAAAGCACATCAGC



[View online >](#)

CAGCCAGTGAAGGGTCCCTGACGATCCCTGAGGTCTTCTCCAATCTCAACTCTGTCATGTGTGGAGG
GGGAAGCTGGCAGTGGAAAGACAACCTTCTGAAGAGGATAGCTTTTCTCTGGGCATCAGGATGCTGCC
CCTGTTGTACAGGTTCCAGCTGGTCTTCTACCTCTCCCTAGTTCATCACACCAGGCCAGGAAGTGGCC
AAAATCATCTGTGCCAACTCCTAGGGGACAGGAGGCTGCATTAGTGAAGTGTGTCTGAGCAGCATCATCC
AGCAGTTACAACACCAGGTGCTGTTCTGTTGGATGACTACAGTGGGCTGGCCTCACTCCCCAAGCCCT
ACACACACTGATTACAAAAAATACTTGTACGGACCTGCTTATTGATCGCTGTGCATACAAAACAGGTC
AGGGGCATCCGCCATACCTAGATACGAGTCTAGAGATCAAAGAGTTTCCCTTCTATAAATACTGTCTCTG
TGTTACGGAAGCTTTTTTACATGACATAATGCGTGTACGAAAAATTTATAAATTACTTTGGATTTTCATGA
AGAGTTGCAGGAATTCACAAGACACCCCTCTTCTGTCAGCAGTATGTACTGACTGGTTTTAAAAATCCA
TCTGACCAGCCCTTTCAGGATGTGGCACTTTTCAAGGCCTATATGCAATACTTGCCTTAAAGCACAAAAG
GTGACAGTAAGCCTCTCCAGGCCACAGTGTCTCATGTGGGCAGCTGGCCTTGACAGGGCTTTTCTCATC
GTGCTTTGAGTTCAATAGTGATAACCTGGCAGAGGCAGGAGTTGATGAAGATGAAGAGCTCACCACCTGC
TTGATGAGCAAATTCACCGCCAGAGACTGAGGCCAGTCTACCGGTTTTTAGTCTCTGTTCCAGGAGT
TTCTTGCTGCCGTGAGGTTGACTGAACTCTGAGTTCAGATAGGCAGGAAGACCAAGATCTGGGACTTTA
TTATTTGAGACAAATTAACCTCACCTCTAAAGGCTATGAGCATCTACCACACTTTTTTGAATATGTCTCC
AGCCACCCTTCATCAAAGGCAGCGCCAACAGTTGTATCTCATTTGCTTCAGTTGGTGGATGAGAAAGAGT
CACTGGAGAACATGTCTGAAAATGAGGATTACATGAAGCTCCATCCAGAAGCTTTGCTGTGGATTGAGTG
TCTTAGAGGATTGTGGCAGCTGTCTCTGAATCTTTTTCTTTGTTTCAATTCAGAAAACTTATTGCGCATT
TGTCTAAACTTTGCTCATGAAAGCAACACAGTTGCTGCATGTTCTCCAGTTATTTTGCAGTTCTTCCGAG
GGAGAACACTGGATTTGAAAAGTTTTGAGTTTACAGTACTTTTGGGACCATCCAGAAAACCTTGTGTTATT
GAAGAGTATTAAGATCTCATTAAATGAAAATACTGGGTACAGAGAATCGATTTTCACTCATAGAAAAA
TCTTTTGAAGAAAGTACAGCCACCAACTATAGATCAGGACTATGCCATTGCCTTTCAACCTATAAAATGAAG
TCCAGAAAAATTTATCTGAAAAGAAAACACATAATAAAGAAGTATGAGGATATGAAACACCCAGATCCCA
AAATATTAGTACTGGCTACTGAAAAGTGTCCCCCAAGCCATACAAGATCCCAAGCTGGAAGTTCAAGTG
ACCAACACAGGTCAGCAGATCAAGCACTGCTCCAGGTCCTCATGGAAGTCTTCTCAGCTTCACAGAGTA
TTGAGTCCGTTTATCCGACAGCAGTGGCTTCTTGAAGCATCCGCCAGCTCTGGAGCTGAGTAAGGC
CTCTGTACCAAGTGTTCATGTCCAGGCTGGAGCTCAGCAGAGAAGATCAGAAGCTGTTCTCACCCCTG
CCTACCCTGCAGTCTCTCGAGGCTCAGAGACAAACCAGTTACCAGATCAGCTCTCCATAAATTGCACA
AGTTCTGGGCCGTAAGAACTGTGTGAGACTAGATAGCAAGCCGGATGTGCTCTCAGTCTTCTCTGG
AGAGTTCCCAAACCTCCATCACATGGAGAAGTTATCCATCAGAACCTCCACGGAGTCTGACCTCTCCAAA
CTAGTTAAGTTGATTAGAATCTCCAATCTCCATGTTTTCCATCTGAAGTGAATTTCTTTTGAATT
GTGAGCCTCTCATGACTGTGCTTCTGCAAGAACTCAGAGAGATTGAGTTTTCTGGACGATGCTT
TGAAGCCATGACCTTTGTCAACATTTTGCAAAATTTGTTTTTCTGAAGATATTGAATCTTAGAGACCAA
CAATTCAGATAAAGAAACATCAGAAAAGTTTGGCCAGGCTCTGGGTTCTCTCAGGAACCTGGAGAAAAC
TGTTCTGTTCCCACTGGGACGGGATTACCAAGTGGCCAAACTGATTGTCGGCAGTGTCTGCAGCTCCC
ATGTCTCCGAGTCTTGTCTTTGCAGAGACTCTGGATGACGACAGTGTACTGGAATTTGCCAAGGGAGCA
ACCAGGGGAGGCTTCCAAAAACTTGAGAATTTAGACCTTACACTGAATCACAAGATTACAGAGGAAGGAT
ACAGAAAATTTCTTCAAGTCTGGACAACCTGCCAAAACCTGAAAAACCTGGACATTTCCAGGCATATCCC
AGAATGCATTCAAATTCAGGCCATCACTGTCAAGGCTCTGGGTCAGTGTGTGTCGCCAGCTGCCAGCCTC
ACCAGGCTCGGGATGCTCAGTTGGCTCCTGGATGAAGAGGACATAAAAAGTATTAAATGATGTGAAGGAAA
GACACCCTCAGTCCAAACGCTTACTGTTCACTGGAGGTGGGTAGTGCCATTCTCTCTGTCATTAGAA
G

ACGCGTACGCGGCCGCTCGAG - GFP Tag - GTTTAA

Protein Sequence: >MG216094 representing NM_010872
 Red=Cloning site Green=Tags(s)

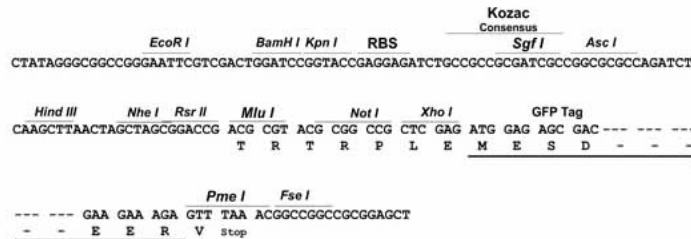
MAAQGEAVEEIIICEFDDDLVSELSTLLRVDALSVLKRQEEEDHKTRMKMKKGFNSQMRSEAKRLKTFETY
 DKFRSWTPQEMAAAGFYHTGVKLGVCFCSSILFSTRLRKLP IENHKKLRPECEFLLGKDVGNIGKYDI
 RVKSPEKMLRGDKARYHEEEARLESFEDWPFYAHGTSRVL SAAGFVFTGKRDTVQCFSCGGCLGNWEEG
 DDPWKEHAKWPKCEFLQSKKSPEEITQYVQSYEGFLHVTGEHFVNSWVRRELPMSAYCNDVFA NEEL
 RMDTFKDWPHESPGAVEALVKAGLFYTGKRDIVQCFSCGGCMEKWAEGDNP IEDHTKFFPNCVFLQTLKS
 SAEVIPALQSHCALPEAMETTSESNHDDAAVHSTVVDVSPSEAQLEP ASSLVSVLCRDQDHSEAQGRG
 CASSGYLPSTDLGQSEAQWLQEARSLSEQLRDTYTKATFRHMNLPEVYSS LGTDHLLSCDVSIISKHIS
 QPVQGS LT IPEVFSNLNSVMCVEGEAGSGKTTFLKRI AFLWASGCCPLL YRFQLVFYLSLSSITPGQELA
 KIICAQLLGAGGCI SEVCLSSIIQQLQHQLFLDDY SGLASLPQALHTLITKNYL SRTCLLI AVHTNKV
 RGIRPYLDTSLIKEFPFYNTVSVLRKLF SHDIMRVKFINYFGFHEELQGIHKTPLFVA AVCTDWFKNP
 SDQPFQDVALFKAYMQLSLKHKGA AKPLQATVSSCQLAL TGLFSSCFEFNSDNLA EAGVDEDEELTTC
 LMSKFTAQRLRPVYRFLGPLFQEF LAAVRLLTELLSSDRQEDQLGLYYLRQINSPLKAMSIYHTFLKYVS
 SHPSSKAAPT VVSHLLQLVDEKESLENMSENYMKLHPEALLWIECLRGLWQLSPEFSLFI SENLLRI
 CLNFAHESNTVAACSPVILQFLRGR TDLKVL SLQYFWDHPETLLLLKSIKISLNGNNWVQRIDFSLIEK
 SFEKVQPPTIDQDYAIAFQPI NEVQKNLSEKKHIIKKYEDMKHQIPLNISTGYWKLSPKPYKIPKLEVQV
 TNTGPADQALLQVLM EVFSASQSIEFRLSDSSGFLESIRPALELSKASVTKCSMSRLELSREDQKLLLT
 PTLQSLEVSETNQLPDQLFHNLHKFLGLKELCVRLDSKPDVLSVLPGEF PNLHMEKLSIRTSTESDSLK
 LVKLIQNSPNLHVFLKCNFLSNCEPLMTV LASCCKLREIEFSGRCFEAMTFVNILPNFVFLKILNLRDQ
 QFPDKETSEKFAQALGSLRNLEKLFVPTGDGIHQVAKLIVRQCLQLPCLRVLVFAETLDDDSVLEIAKGA
 TRGGFQKLENLDLTLNHKITEEGYRNFFQVLDNLPNLKNLDISRHIPECIQIQAITVKALGQCVSRPLPSL
 TRLGMLSWLLDEEDIKVINDVKERHPQSKRLTVHWRWVVPFSPVIQK

TRTRPLE - GFP Tag - V

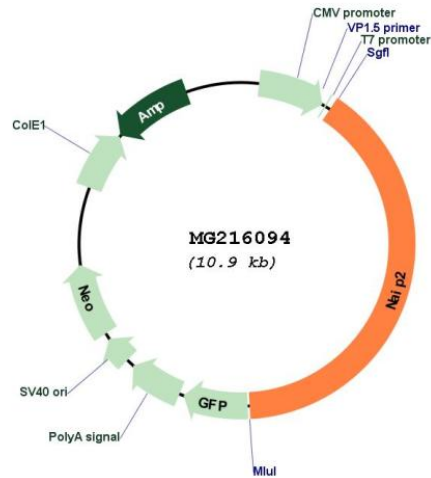
Restriction Sites: SgfI-MluI

Cloning Scheme:

Cloning sites used for ORF Shutting:



Plasmid Map:



ACCN: NM_010872

ORF Size: 4341 bp

OTI Disclaimer: The molecular sequence of this clone aligns with the gene accession number as a point of reference only. However, individual transcript sequences of the same gene can differ through naturally occurring variations (e.g. polymorphisms), each with its own valid existence. This clone is substantially in agreement with the reference, but a complete review of all prevailing variants is recommended prior to use. [More info](#)

OTI Annotation: This clone was engineered to express the complete ORF with an expression tag. Expression varies depending on the nature of the gene.

Components: The ORF clone is ion-exchange column purified and shipped in a 2D barcoded Matrix tube containing 10ug of transfection-ready, dried plasmid DNA (reconstitute with 100 ul of water).

Reconstitution Method:	<ol style="list-style-type: none">1. Centrifuge at 5,000xg for 5min.2. Carefully open the tube and add 100ul of sterile water to dissolve the DNA.3. Close the tube and incubate for 10 minutes at room temperature.4. Briefly vortex the tube and then do a quick spin (less than 5000xg) to concentrate the liquid at the bottom.5. Store the suspended plasmid at -20°C. The DNA is stable for at least one year from date of shipping when stored at -20°C.
RefSeq:	NM_010872.3 , NP_035002.2
RefSeq Size:	4823 bp
RefSeq ORF:	4344 bp
Locus ID:	17948
UniProt ID:	Q9QUK4
Cytogenetics:	13 53.01 cM
Gene Summary:	Sensor component of the NLRC4 inflammasome that specifically recognizes and binds type III secretion system (T3SS) rod proteins such as <i>S.typhimurium</i> (Salmonella) PrgJ and <i>B.thailandensis</i> BsaK from pathogenic bacteria. Association of pathogenic bacteria proteins drives in turn drive assembly and activation of the NLRC4 inflammasome, promoting caspase-1 activation, cytokine production and macrophage pyroptosis. The NLRC4 inflammasome is activated as part of the innate immune response to a range of intracellular bacteria. The NLRC4 inflammasome senses Gram-negative bacteria such as <i>L.pneumophila</i> and <i>P.aeruginosa</i> , enteric pathogens <i>S.typhimurium</i> (Salmonella) and <i>S.flexneri</i> . Prevents motor-neuron apoptosis induced by a variety of signals.[UniProtKB/Swiss-Prot Function]