

Product datasheet for **MG216090**

Ptpn21 (NM_001146199) Mouse Tagged ORF Clone

Product data:

Product Type:	Expression Plasmids
Product Name:	Ptpn21 (NM_001146199) Mouse Tagged ORF Clone
Tag:	TurboGFP
Symbol:	Ptpn21
Synonyms:	PTPD1; PTPRL10
Mammalian Cell Selection:	Neomycin
Vector:	pCMV6-AC-GFP (PS100010)
E. coli Selection:	Ampicillin (100 ug/mL)
ORF Nucleotide Sequence:	>MG216090 representing NM_001146199 Red=Cloning site Blue=ORF Green=Tags(s)

TTTTGTAATACGACTCACTATAGGGCGGCCGGAATTCGTCGACTGGATCCGGTACCGAGGAGATCTGCC
GCC**CGATCGCC**

ATGCCACTGCCATTTGGATTGAAGTTGAAACGCACCCGACGCTACACTGTGTCCAGCAAGAGCTGCCTGG
TTGCCCGGATCCAGCTGCTCAATAATGAGTTTGTGGAGTTCACCTGTCTGTGGAGAGCACTGGCCAGGA
GAGCCTAGAAGCTGTGGCCAGCGCCTGGAGCTGAGAGAGGTCACCTACTTTAGCCTCTGGTACTACAAC
AAGCAGAATCAGCGCGCTGGTGGATTGGAGAAACCCCTGAAGAAGCAGCTGGACAAGCAGCACTGG
AGCCTACCGTCTACTTCGGCGTGTATTCTATGTGCCTTCTGTTCCAGCTGCAGCAGGAGATTACCAG
GTATCAGTATTACCTGCAGCTGAAGAAAGATATTCTGGAAGGAAACCTTCCCTGTACATTAGAACACGCC
ATTCAGCTGGCCGGCTTAGCTGTTCAAGCTGATTTTGGTGACTTTGATCAGTATGAATCCCAAGATTTTC
TTCAGAAATTTGCCTTGCTCCCCGTGGCATGGCTACAGGATGAAAAAGTCTGGAAGAAGCAGCCAGAA
AGTGGCCTTACTGCACCAGAAAACAGAGGGCTCACAGCTCCTGAGGCCGAGCTGCTGTACATGCAGGAG
GTAGAGAGAAATGGATGGCTACGGAGAGGAGACTACCCTGCCAAGGACAGCCAAGGAAAGTACATATCCA
TTGGTGCCTGTCTCGATGGCATCTTTGTGAAACACAAGAACGGAAGGCCCTCCTGTGGTGTTCAGGTGGCA
CGACATTGCTAACATGTCGCATAACAAGTCCTTTTTGCACTAGAGCTGGCAAAATAAGAGGAGACCATC
CAGTTTTCAAAGTGAAGACATGGAGACAGCAAGTACGTGTGGCGGCTGTGTGGCACGGCACAAATTCT
ACAGACTGAACCAAGTGTAGCCTGCAAACGCAGGCCCGCCAGCTGAACTCAGTCAGGAGGGGCTCATCCTC
CAGGATGTCTCTGCCTAAACCCAGCCCTATGCGATGCCTCCCCACCCAGCTGCATTATAATGGACAT
TATACAGAGCCATTTGCTTCTTCCCAAGACAACATCTTTGTGCCCAACAAGAATGGATTCTACTGCACT
CCCAGACAAGCCTGGATAGAACCAGATTGACCTCAGTGGTTCGCATCCGCAACGGCAGCGCTACAGTGC
ACACAGTACGAATTCCTTAAACACACTTCAGCCCTACCTGCAGCCCTCCCCATGTCTCCAACCCGAGT
ATCACTGGCAGTGTATGTCATGAGACCCGACTACATCCCGTCCCACGGCACAGTGCCTCATTCCCCGT
CTTACCGCCGACCCCTGACTACGAGACCGTGTGAAGCAGCTCAACAGAGGCATGGTGCACGCAGACCG
GCACAGCCACTCGCTGAGGAACCTCAACATTGGCAGTTCTATGCGTACAGCCGGCCGACGCTTGTC



[View online >](#)

TACAGCCAGCCCAGATTCTGGGAGCACCTCACCTCACCTCTCCCCAGTCAGCCACTACCCCTTAACC
TGAACACAGTTTCCACAGCCAGTCTCCGTATCCCTACCTGCCGAGAGGCGGCCAGTGGTGGGCGCGT
GAGTGTGCCTGAACTGACAAATGTGCAGCTGCAGGCTCAGGACTACCCAGCTCCAAACATTATGAGAACC
CAGGTGTACCGCCACCCCGCCGTATCCTTACCCAAGACCTGCCAACAGCACCCAGACCTGTCCCGCC
ACCTCTACATCAGCAGCAGCAATCCGGATCTCATACCAGGCGGTCCATCACTCAGTGCAGACCTTCCA
GGAGGACAGCTTGCCCGTGGCTCACTCTCTGCAGGAGTGCAGGAGCCCTCACAGCAGCGCCCATGCC
CACCTACAGAAGAGAACAGTATTGAAATCGCAGGGCTCACACATGGATTGGAAGGCTGAGGCTCAAGG
AGAGGACGGTGTCCAGCTCAGCAGCAGACGTGGCGCCCGGACCTTCTCAGCAGGCTCCAGTCCAGCGT
CTTCTCTGACAAAATGAAGCAGGAGGGACTGAAGAGCAGGAGGGTGGCAGATACAGCCATAAGAAGTCC
CTTTCTGATGCCACCATGCTGATTCATAGCAGTGAAGGAGCAGGAGTGGAAAGGACAGCAGCAGAG
AACAGGCCATCTCAGCTGTGTCTGAGCCCCGCTTACGGCCGCTTTCTCTCAGGAACTAACTACCCCTG
TGCTTCAGCGACTCCGATCACTGGGCTCTGCATATTTTTGAGCCCAAGCCCATGTACAGAGCCTGAG
AAGAGGGCAAAGGACATCAGCCCTGCCACCTGGTTGTGGAGACCCATCGGCCCGAAGAGATGGACTGC
TGACCCCTCCATGTCCGAGTCACTCAGCCTCAGCCTCAGGAGGTACCGAGCTAGGAGGGACTCTGTCAA
GAAAAGGCCAGTGTGAGCCTCCTCTCTGGGAAAAAAGCGCTGTGGAAGGACTTCGCCACTAGGGGGG
ATGAAAAAACTCGAGCAGATGCAAAAAAATTGGTCCCCTCAAGCTGGCAGCCCTCAATGGGCTCTCC
TGTCGCGCTGCCCTGCCTGATGAAGGAAAAGAGTGTCCACCAGAGCGACAAAATGACGAGAGGTGCAA
GGTTCTGGAGCAGCGTTAGAGCAAGGCATGGTCTTACCGAATATGAGAGGATCCTTAAGAAGCGGCTG
GTTGATGGTGAGTGTCTGACTGCCCGGCTCCCTGAAAAATGAGAGAGAAAATCGATTTCAAGATGTCTCC
CCTACGATGATGCGAGAGTCAAGTTGGTCCAACCAAGGAGAACAACTGGCTACATCAACGCGTCACA
CATTAAAGTCTCTGTGAGCGAATAGAAATGGGATTATATTGCCACACAGGGACCATTACAAAATACCTGC
CAGGACTTTTGGCAGATGGTGTGGGAACAGGGAGTCGCAATTATAGCAATGGTGACAGCAGAAGAGGAGG
GAGGCCGGGAGAAGAGCTTTAGTACTGGCCACGGCTTGGTTCCAGGCACAACACTGTACCTATGGAAG
GTTTAAGATCACACGCGCTTCCGCACGACTCGGGCTGCTATGCCACCACAGGTTTGAAGATGAAGCAC
CTTCTCACAGGGCAGGAGAGAACCCTTTGGCATCTTCACTACACAGACTGGCCTGAACACGGCTGTCCCG
AAGACCTCAAAGGATTTTATCCTACCTTGAAGAGATCCAGTCACTTCGACGTCATACAAACAGTACCAG
TGAACCCAAAAGCCACAATCCCCGCTGCTGGTGCAGTGCAGTGGCGTGGGAAGAACTGGGGTCTGTC
ATTCTGTCAGAGATCATGGTTGCCTGTCTGGAACACAATGAGGTGCTGGACATCCCAGAGTGTGGACA
TGCTGAGGCAGCAGAGGATGATGCTGGTGCAGACACTGGCCAGTACACCTTTGTGTACAGAGTGTCTCAT
TCAGTTCTGAAAAGCTCCAGGCTCATT

AGCGGACCGACGCGTACGCGGCCGCTCGAG - GFP Tag - GTTTAA

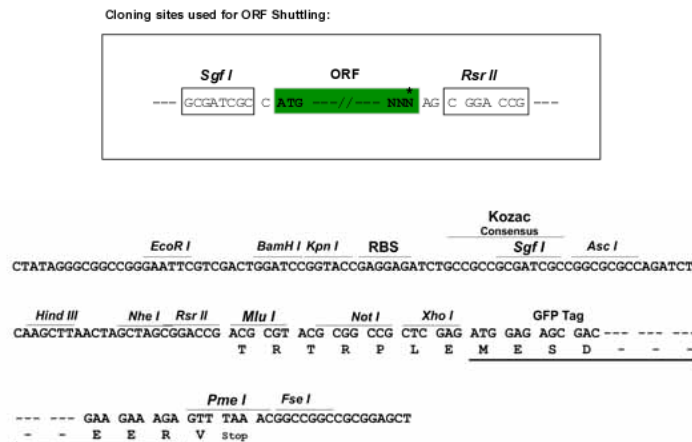
Protein Sequence: >MG216090 representing NM_001146199
 Red=Cloning site Green=Tags(s)

MPLPFGLKLRTRRYTVSSKSLVARIQLLNNEFVEFTLSVESTGQESLEAVAQRLELREVTYFSLWYYN
 KQNQRWVDLEKPLKKQLDKHALEPTVYFGVLFYVPSVSQLQQEITRYQYYLQLKKDILEGNLPCTLEHA
 IQLAGLAVQADFGDFDQYESQDFLQKFAALLPVAWLQDEKVL EEAQKVAL LHQKYRGLTAPAEALLYMQE
 VERMDGYGEESYPAKDSQGS DISIGACLDGIFVKHKNRPPVFRWHDIANM SHNKSFFALELANKEETI
 QFQTEDMETAKYVWRLCVARHKFYRLNQCSLQTQAATLNSVRRGSSRMSLPKPQPYAMPPPPQLHYNGH
 YTEPFASSQDNIFVPNKNGFYCHSQTSLDRTQIDL SGRIRNGSVYSAHSTNSLNTLQPYLQPSMSSNPS
 ITGSDVMRPDIIPSHRSALIPPSYRTPDYETVMKQLNRGMVHADRHSHSLRNLNIGSSYAYSRPDALV
 YSQPEIREHPLTSPQSAHYPFNLNYSFHSQSPYPYPAERRPVVAVSPEL TNVQLQAQDYPAPNIMRT
 QVYRPPPPYPYRPRANSTPDL SRHL YISSNPDLITRRVHHSVQTFQEDSLPVAHSLQEVSEPLTAAARHA
 HLQKRNSIEIAGLTHGFEGLRLKERTVSASAADVAPRTFSAGSQSSVFSKMKQEGTEEQEGGRYSHKKS
 LSDATMLIHSSEDEDLEEDSSREQAISAVSEPRLTAAF SQELNYPCASATPITGPLHIFEPKPHVTEPE
 KRAKDIPAHLVVETHRPRRDGLLTPSMSEDLTTSGRYRARRDSVKKRPVSDLLSGKKS AVEGLPPLGG
 MKKTRADAKKIGPLKLAALNGLSLRSLPLPDEGKEVSTRATNDERCKVLEQRLEQGMVFTEYERILKKRL
 VDGE CSTARLPENAERNRFQDVL PYDDARVELVPTKENNTGYINASHIKVSVSGIEWDYIATQGPLQNTC
 QDFWQMVWEQGVAI IAMVTAEEEGGREKSFYWPRLGSRHNTVTYGRFKITTRFR TDSGCYATTGLKMKH
 LLTGQERTVWHLQYTDWPEHGCPEDLKGFLSYLEEIQSVRRHTNSTSEPKSHNPPLL VHC SAGVGR TG VV
 ILSEIMVACLEHNEVLDIPRVL DMLRQQRMMLVQTLGQYTFVYRVL IQFLKSSRLI

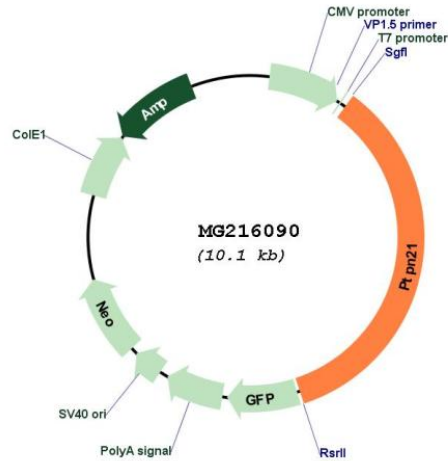
SGPTRRRLE - GFP Tag - V

Restriction Sites: SgfI-RsrII

Cloning Scheme:



Plasmid Map:



ACCN: NM_001146199

ORF Size: 3528 bp

OTI Disclaimer: The molecular sequence of this clone aligns with the gene accession number as a point of reference only. However, individual transcript sequences of the same gene can differ through naturally occurring variations (e.g. polymorphisms), each with its own valid existence. This clone is substantially in agreement with the reference, but a complete review of all prevailing variants is recommended prior to use. [More info](#)

OTI Annotation: This clone was engineered to express the complete ORF with an expression tag. Expression varies depending on the nature of the gene.

Components: The ORF clone is ion-exchange column purified and shipped in a 2D barcoded Matrix tube containing 10ug of transfection-ready, dried plasmid DNA (reconstitute with 100 ul of water).

Reconstitution Method:

1. Centrifuge at 5,000xg for 5min.
2. Carefully open the tube and add 100ul of sterile water to dissolve the DNA.
3. Close the tube and incubate for 10 minutes at room temperature.
4. Briefly vortex the tube and then do a quick spin (less than 5000xg) to concentrate the liquid at the bottom.
5. Store the suspended plasmid at -20°C. The DNA is stable for at least one year from date of shipping when stored at -20°C.

RefSeq: [NM_001146199.1](#), [NP_001139671.1](#)

RefSeq Size: 5562 bp

RefSeq ORF: 3531 bp

Locus ID: 24000

Cytogenetics: 12 E