

## Product datasheet for **MG216081**

### Slc39a8 (NM\_001135150) Mouse Tagged ORF Clone

#### Product data:

Product Type:	Expression Plasmids
Product Name:	Slc39a8 (NM_001135150) Mouse Tagged ORF Clone
Tag:	TurboGFP
Symbol:	Slc39a8
Synonyms:	4933419D20Rik; AA986696; BIGM103; ZIP-8; Zip8
Mammalian Cell Selection:	Neomycin
Vector:	pCMV6-AC-GFP (PS100010)
E. coli Selection:	Ampicillin (100 ug/mL)



[View online »](#)

**ORF Nucleotide Sequence:**

>MG216081 representing NM\_001135150  
 Red=Cloning site Blue=ORF Green=Tags(s)

TTTTGTAATACGACTCACTATAGGGCGGCCGGGAATTCGTCGACTGGATCCGGTACCGAGGAGATCTGCC  
 GCC**CGATCGCC**

ATGGCTCCGGGCCGGGCAGTGGCCGGGCTGCTGCTGCTGGCGGCCACCAGCCTGGGACACCCTCGGAGG  
 GACCGGAGCTCGCCTTCAGTGAGGATGTGCTGAGCGTGTTCGGCGCCAACCGGAGCCTGTCGGCCGCGCA  
 GCTGGGGCGCCTGCTGGAGCGTCTGGGGCTGCATCCCAGCAGGGAGCGCTGGACCTGGGCCAGCTGCAC  
 TTCAACCAGTGTTTGTACGACAGAAGACATCTTTTCTTTCATGGTTTCTCAAATGTCACCCAGATAACCA  
 GCTCGAATTCTCTGCCATCTGCCCGCGATCTTACAGCAGCTGAACTTCCATCCCTGCGAGGATCTAAG  
 AAAGCACAACGCAAAGCCAGTCTTCCGAAGTCTGGGGCTATGGATTCTGTGAGTACAATTATCAAT  
 CTGGCCTCTCTCTGGGATTGATTTAAACCCCTTGATAAAGAAGTCTTATTTCCCAAGATTTAACTT  
 ATTTCTGGGACTCGCTATTGGGACTCTTTTCTCAAACGCCATTTCCAGCTTATCCAGAGGCATTTGG  
 ATTTAATCCAAAATTGACAATTACGTTGAGAAAGCAGTTGCTGTGTTTGGTGGATTTTACATGCTTTTC  
 TTTGTCGAGAGAACACTTAAGATGCTACTGAAAACATATGGCCAGAATGACCATACTCACTTCAGGAATG  
 ATGACTTTGGTTCTAAAGAAAAAACCCACCAACCCAAAACGTTACCATTGCCTGCAGTCAACGGTGTGAC  
 TTGCTATGCCAACCCCGCTGTCAGTACGCTAACGGACACATCCACTTCGACACTGTCAGCGTTGTATCC  
 CTCCAGGATGGAAAAACAGAGCCAAGCTCATGTACCTGTCTGAAGGGGCCAAAACGTCAGAAAATAGGAA  
 CAATTGCCTGGATGATCACGCTTTGTGATGCCCTCCACAATTTTCATCGACGGCTTGGCGATTGGGGCATC  
 TTGACTTTGTCTCTTCTCAGGGGCTCAGTACGTCATAGCGATCCTGTGTGAGGAGTTTCTCATGAG  
 TTAGGGGACTTTGTGATCTTGTCAATGCAGGAATGAGCACCCGCAAGCCTTGTGTTCAACTTCTCT  
 CCGCGTGTCTCTGCTACGTGGGACTAGCTTTCGGCATTTCGGTGGCAACAATTTGCTCCCAATATTAT  
 ATTTGCACCTCGCTGGAGGCATGTTCTCTACATTTCTCTGGCAGATATGTTTCCAGAGATGAACGACATG  
 CTGAGAGAAAAAGTAACTGGAAGACAAACGGATTTACCTTCTCATGATCCAGAATGCAGGGATGTTAA  
 CCGGCTTCACTGCCATCTGCTCATCACCTGTACGCAGGAGACATCGAATTGCAG

**ACGCGT**ACGCGGCCGCTCGAG - GFP Tag - GTTTAA

**Protein Sequence:**

>MG216081 representing NM\_001135150  
 Red=Cloning site Green=Tags(s)

MAPGRAVAGLLLLAATSLGHPSEGPELAFSEDVLSVFGANRSLAAQLGRLLERLGAASQQGALDLGQLH  
 FNQCLSAEDIFSLHGFSNVTQITSSNFSAIQPAIQQLNFHPCEDLRKHNAKPSLSEVWGYGFLSVTIIN  
 LASLLGLILTPLIKKSYFPKILTYFVGLAIGTLFSNAIFQLIPEAFGFNPKIDNYVEKAVAVFGGFYMLF  
 FVERTLKMLLKTYGQNDHTHFRNDDFGSKEKTHQPKTLPLPAVNGVTCYANPAVTEPNHGHIFDTSVVS  
 LQDGKTEPSSCTCLKGPKLSEIGTIAWMITLCDALHNFIDGLAIGASCTLSLLQGLSTSIAILCEEFPHE  
 LGDFVILLNAGMSTRQALLFNFLSACSCYVGLAFGILVGNFAPNIIIFALAGGMFLYISLADMFPPEMNDM  
 LREKVTGRQDFTFFMIQNAAGMLTGFTAILLITLYAGDIELQ

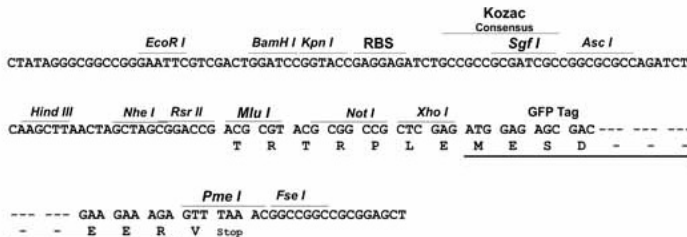
**TRTRPLE** - GFP Tag - V

**Restriction Sites:**

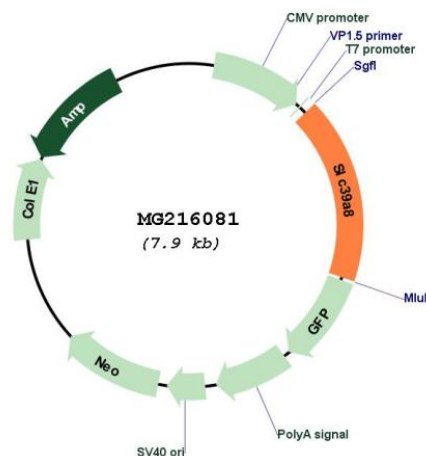
Sgfl-MluI

Cloning Scheme:

Cloning sites used for ORF Shutting:



Plasmid Map:



ACCN: NM\_001135150

ORF Size: 1386 bp

OTI Disclaimer: The molecular sequence of this clone aligns with the gene accession number as a point of reference only. However, individual transcript sequences of the same gene can differ through naturally occurring variations (e.g. polymorphisms), each with its own valid existence. This clone is substantially in agreement with the reference, but a complete review of all prevailing variants is recommended prior to use. [More info](#)

OTI Annotation: This clone was engineered to express the complete ORF with an expression tag. Expression varies depending on the nature of the gene.

<b>Components:</b>	The ORF clone is ion-exchange column purified and shipped in a 2D barcoded Matrix tube containing 10ug of transfection-ready, dried plasmid DNA (reconstitute with 100 ul of water).
<b>Reconstitution Method:</b>	<ol style="list-style-type: none"><li>1. Centrifuge at 5,000xg for 5min.</li><li>2. Carefully open the tube and add 100ul of sterile water to dissolve the DNA.</li><li>3. Close the tube and incubate for 10 minutes at room temperature.</li><li>4. Briefly vortex the tube and then do a quick spin (less than 5000xg) to concentrate the liquid at the bottom.</li><li>5. Store the suspended plasmid at -20°C. The DNA is stable for at least one year from date of shipping when stored at -20°C.</li></ol>
<b>RefSeq:</b>	<u>NM_001135150.1, NP_001128622.1</u>
<b>RefSeq Size:</b>	3533 bp
<b>RefSeq ORF:</b>	1389 bp
<b>Locus ID:</b>	67547
<b>UniProt ID:</b>	<u>Q91W10</u>
<b>Cytogenetics:</b>	3 63.04 cM
<b>Gene Summary:</b>	Acts as a manganese and zinc influx transporter. Plays a role in manganese reabsorption in the proximal tubule of the kidney and in manganese uptake into the brain.[UniProtKB/Swiss-Prot Function]