

Product datasheet for **MG216079**

Ckap2 (NM_001004140) Mouse Tagged ORF Clone

Product data:

Product Type:	Expression Plasmids
Product Name:	Ckap2 (NM_001004140) Mouse Tagged ORF Clone
Tag:	TurboGFP
Symbol:	Ckap2
Synonyms:	AI461656; AW228814; LB1
Mammalian Cell Selection:	Neomycin
Vector:	pCMV6-AC-GFP (PS100010)
E. coli Selection:	Ampicillin (100 ug/mL)



[View online »](#)

ORF Nucleotide
Sequence:

>MG216079 representing NM_001004140
Red=Cloning site Blue=ORF Green=Tags(s)

TTTTGTAATACGACTCACTATAGGGCGGCCGGAATTCGTGCGACTGGATCCGGTACCGAGGAGATCTGCC
GCCCGCATCGCC

ATGGCAGAGTCCAGGAAACGCTTCCTTGGCAGGGCTGCGAGGAATCCCTTGCCGGTGACCCGGGACCTGC
AGCTGCCCCCGACCAGGCGAGACCAGCCGGCCTTCCGAGAACAAGAAAAACAAAACTCAAGGAATATCT
GTTAATACGAAAAACAGTGTTTCCATACAAACAAGAAAATCAGATATCCAGAGATCAGAAAAATGATAACA
TCTGAGGATCGGGTCCAAGAAGGAAAAAAGTTGTGAAACTCAAAACAGAAGTGGCTGATAAAGAAAAATA
TTGAAAGTACAGTTGAGAAAACTGCATTCCATTAAGCTGGAGAAGTAACCAGCTCAGAAATACATAA
TTCAAAGGATAATGTTCAAGCTGTGCAGTTATTATCTACAAGAGATGATTTGCCAGGTGACTGTGACA
TTAGACCCGGCATGTACCATAAAGACAATAAAAAAGATGCAAATGACTGCAGAGAAGCCCAACAAGACA
GTAATGTGTCTAAAAAGCGAGTGTCTGGCTATTATCATGGCCAGATTGTTCACTAAGATTAATTCATT
TAGAAAGCTTCCAGTGTCAAAGGCGAGAGTCTTACAACAACCAAGAACTTCCCACTACTGTGTCTAAA
GCCATGAAGGCTCAGAGTGAGCCTGCGAACACCGTCAGCGTAAAAGCCTCAACTACAGCTGCTGCCACCA
AGTTTGCAGACGCTAAACCTGTGAGCACTGCGTCGAAGGACACACTTGTGCGACCACCTATCCGAAGCCT
CCACAGTAGTTCCACGGAGCTGCGAAACAGGGCCTCAGCAGGCCGCTTGCCAATGTTACAGTCAGAAAA
GGGATGCTTGACAAGGAGTCACATCGATCAGAACCAGTTGTGTCGGTGTCAAAGCCGGTCTTCTCAGG
CCCCATCAAGAAGCATAGCATCTAAGATGCAGCCAGGACTGATTCGTCTAATACCAGACTGATGGTAAA
GCCAAAAGATACTGACCAGCGCAGATACACGATTGCAGGAGCAAGTTCATAGATCAGCTCAGCTCAAG
GACACCACCGCAGAGAGGAAAGCTCAGATGACGGAGTGGAGAAGTGGCAAAGGAAAGGGGCTAAAACGAC
CTCCTCATTCAGTAGTCACCCAGGCTGAGCCAAAGGGACAAAGTAAAACCCAGTTGGGTCCTTTTGGAC
TACCATGGCAGAAGAAGATGAGCAGAGATTATTTACTGAAAAAGTAAACAAAACTATTTCTGAATGCCTG
AACCTTATTAATGAGGGATGCCCAAAAGAAGAAATTTTGGCTACATTGAATGACCTGATTCATAATATTC
CAGATGCCAAAAAAGTGTAAATATTGGATATGTCTTGTACGATTGAACCAATCACAAGTCTATTGA
AAATATTATCTCAATCTATGAGAAGGCCATCCTGGCAGGGGCTCAGCCTATTGAAGAGATGCGTCATATA
ATCATAGATATTCTAACCAAGAGTCAAGAAAAAGTCAATTTGGGAGAAAATATTGAGGAGGCTCATG
CAACCAAGGAACCTATCCAAGAAGTAAATGCTGATGCTAATGTAGGGTCAGGAAAACAGGAGAGGAGAA
TGAACATCATGGCAAAGTTGAGGTGTATGAAGATGATCAAGACAACAAAAATAAAGATCCGGATTTAACA
ACTCCGGACTCAAAAAGTGAAGCAGTTGCATAATTCGATATAATGTATCTTCTACACCTCGGCTGCAAA
GTATGAAAAAGATGCAACATGATAAAAAATCCACACTTAAAGAGCTAAAGTTCTGACACCAAGTGAAGC
CTCACGGCGCATTCAAGACAAGACTTACGACTGCCAGCCATGTTAAAAGACCACGACCTTCTGTGTCT
TCCTGGAGCAGTTGTCTGAGTTGGGAGGGGATGCCTTTGTCTGCCGCCCTAATGCAGCACTGTGCCCTC
TGTTCTTTGAGACCGACGTAGCGGAAGAGGAA

ACCGGTACGCGGGCCGCTCGAG - GFP Tag - GTTTAA

Protein Sequence: >MG216079 representing NM_001004140
 Red=Cloning site Green=Tags(s)

MAESRKRFLGRAARNPLPVTRDLQLPPTRRDQPAFREQRKQKLKEYLLIRKTVFPYKQENQISRDKMIT
 SEDRVQEGKVVVVKLKEVADKENIESTVEKNCIPLKAGEVTSSEIHNSKDNVQAVQLLSTRDDLPGQTVT
 LDPACHHKDNKKMQMTAEKPKQDSNVSKRVLGYHGGIVQSKINSFRKLPSVKGESLTTTKLPTTVSK
 AMKAQSEPANTVSVKASTTAAATKFADAKPVSTASKDTLVRPPIRSLHSSSHGAAKQGLSRPLANVTVRK
 GMLDKESHRSRSEPVSVVKAGSSQAPSRSIASKDAARTDSSNTRLMVKPKDQDQRRYTIAGASVHRSACLK
 DTTAERKAQMTEWRTGKGGKGLKRPPHSVVTQAEPKQSENPGVGFWTMAEEDQRLFTEKVNKTISECL
 NLINEGCPKEEILATLNDLIHNIPDAKKLVKYWICLVRIEPIITSPIENIISIYEKAILAGAQPPIEEMRHI
 IIDILTTKSQEKVNLGENIEEAHATKEPIQEVNADANVSGKPGEEENEHHGKVEVYEDDQDNKIKDPDLT
 TPDSTEAGCIIRYNVSTPRLQSMKKMQHDKNSTLKLKFLTPVRRSRIQDKTSRLPAMLKDHDPSVS
 SLEQLSELGGDAFVCRPNAALCPLFFETDVAEEE

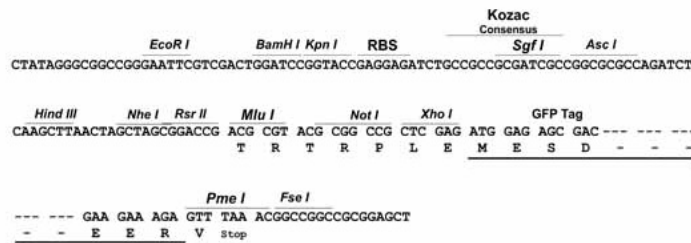
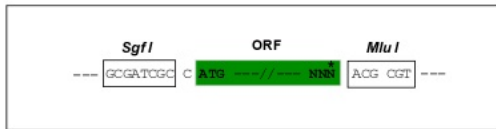
TRTRPLE - GFP Tag - V

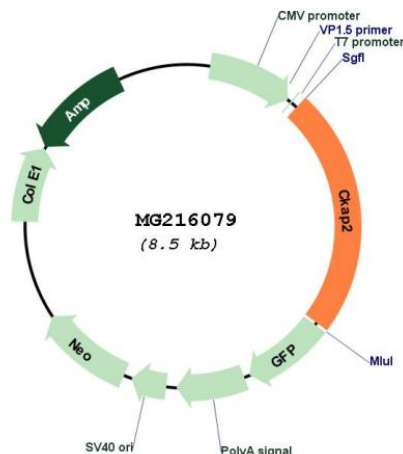
Restriction Sites:

Sgfl-MluI

Cloning Scheme:

Cloning sites used for ORF Shuttling:



Plasmid Map:


ACCN: NM_001004140

ORF Size: 1992 bp

OTI Disclaimer: The molecular sequence of this clone aligns with the gene accession number as a point of reference only. However, individual transcript sequences of the same gene can differ through naturally occurring variations (e.g. polymorphisms), each with its own valid existence. This clone is substantially in agreement with the reference, but a complete review of all prevailing variants is recommended prior to use. [More info](#)

OTI Annotation: This clone was engineered to express the complete ORF with an expression tag. Expression varies depending on the nature of the gene.

Components: The ORF clone is ion-exchange column purified and shipped in a 2D barcoded Matrix tube containing 10ug of transfection-ready, dried plasmid DNA (reconstitute with 100 ul of water).

Reconstitution Method:

1. Centrifuge at 5,000xg for 5min.
2. Carefully open the tube and add 100ul of sterile water to dissolve the DNA.
3. Close the tube and incubate for 10 minutes at room temperature.
4. Briefly vortex the tube and then do a quick spin (less than 5000xg) to concentrate the liquid at the bottom.
5. Store the suspended plasmid at -20°C. The DNA is stable for at least one year from date of shipping when stored at -20°C.

RefSeq: [NM_001004140.2](#), [NP_001004140.2](#)

RefSeq Size:	2601 bp
RefSeq ORF:	1995 bp
Locus ID:	80986
UniProt ID:	<u>Q3V1H1</u>
Cytogenetics:	8 A2
Gene Summary:	Possesses microtubule stabilizing properties. Involved in regulating aneuploidy, cell cycling, and cell death in a p53-dependent manner.[UniProtKB/Swiss-Prot Function]