

## Product datasheet for **MG216062**

### Trim42 (NM\_030219) Mouse Tagged ORF Clone

#### Product data:

<b>Product Type:</b>	Expression Plasmids
<b>Tag:</b>	TurboGFP
<b>Symbol:</b>	Trim42
<b>Synonyms:</b>	4930486B16Rik
<b>Mammalian Cell Selection:</b>	Neomycin
<b>Vector:</b>	pCMV6-AC-GFP (PS100010)
<b>E. coli Selection:</b>	Ampicillin (100 ug/mL)



[View online »](#)

**ORF Nucleotide Sequence:** >MG216062 representing NM\_030219  
 Red=Cloning site Blue=ORF Green=Tags(s)

TTTTGTAATACGACTCACTATAGGGCGCCGGGAATTCGTGCGACTGGATCCGGTACCGAGGAGATCTGCC  
 GCCGCGATCGCC

ATGGAGACGGCTATGTGTGCTGTTCCCTGCTGTACCTGGCAGAGATGCTGCCCCGGCTGTTCTCCT  
 GCCTGTGCTGCAAGTTCATCTTCACCTCCGAGCGGAAGTGCACCTGCTTCCCCTGCCCTACAAGGATGA  
 GCGGAACTGCCAGTTCCTGCCACTGCACCTGTGCAGAGAACCCCAATTGCCACTGGTGTGCTGCTCCTGG  
 GCCAATGACCCCAACTGTAAGTGTGCTGCACGGCCAGCACCAATCTGAAGTGTACTACTACGAGAGCC  
 ACTGCTCCGCAATGTTACCATCACATTGAGAAAGGGTCGCCTTGAAGCATCGTCACTCCTCTAAGAC  
 CGCCCTCCGGTGGGGAGCAGCGATACTCAGATGGATGAACCAAGACCATGCCTGCCAGCAGCCACCTG  
 GTGAGCCACCTCACCTGCCCATGTGCAACCGGCTGCGCTGCACTCCTTCATGCTGCCCTGCAACCACA  
 GCCTATGCGAGAAGTGCCTGCGGCAGCTGCAAAAGCACGCCGAGGTACGAGAGAAATTTCTTCATCCTCAT  
 CTGCCCATGTGCAGCCGCTCGACTGTATGCCCTACAGCCACCAGATGCACCTGCCAGAAAACCTG  
 CGCGGGCGCCTTACTAAACGCTACATGCAGCAGCAGGCTACCTCAAGTGGCGTTCGACCGCTCCTCAG  
 GGCCATCCTCTGCCAGGTGTGCCGACCCGGCGCATTGCCTACAAGCGCTGTGTCACTGTGCTCTCAA  
 CCTGTGCAACGACTGTCTCAAGGCCTTCCACTCAGAGTGGCCATGCAGGACCAGCTTTCGTGGACACC  
 AGCGCTGAGGACCAGGATGAGAAGATTTGCATCCACATCCACGCGCATCAACGAGTACTGCCGCA  
 GCGACAACAGCTACTCTGCGCTTCTGCAAGATCGCTTCCACAATGGCCATGACACGGTCAGCCTCAT  
 AGACGCTGTCCGAGAGGTCTGCTGCCCTCTTCAAGTGCATCGCCAAGTTCAAAGCAGTCCGATATGAA  
 ATTGATAATGACCTGATGGAATTAACATTCTAAAGAGCAGTTTTAAAGCTGACAAGGAAGCAAAGAGGA  
 AGGAGTCCGGAATGGTTTCTCAAACGCGAGCCATCCTTCAAGAGAAAAGAAAGATCATCATGGAACA  
 GATAGAGAATCTGGAAGTGTCCAGGCAGAAAGAAATTGAGAAATATGTGTACATTACGACCATGAAAGTG  
 AACGAAATGGATGGCTGATTGCTTACTCCAAAGAAGCCCTGAAGGAAACAGGACAGGTGGCCTTCTG  
 AGTCTGCCAAGATCCTGGTAGACCAGATTGAGGAGGCATCCAGAATACCTTACGGCCCGACCCCTCAGCT  
 GCGGCTTACTCCCTACACTGTATCCCTTGGATTTTGTGAACTCTCCAATGCCATCCACGAGCTCTTT  
 CCCACGGGACCCAAAAAGGCTTGTCTCCTGCGGACTCACTCCCTTCCAGTATCCTATCCACTCAGAAA  
 TGATGATCGCCAGGAAGGTGACATTGAGCACCATAGCTTCGGCAACCAGCAGATATACCAGCGGAGCTC  
 TTCCTTGATATCCTTCAACACCGCCAATGACAAGGCAAGATGGGTCTGGAGAATACGGGAGAGCCAG  
 TCTGCCGCGCCGCAAGACGACTGACGGCCTTACACCTACTGGAGTGCACAGGGGAAACCCAGCCCC  
 CGCAGAGCAGTAACAGCTTCCACAACCTGGTATTCTTCAACGACACCTCTGTGAGGACCCCAAGCCCAAT  
 TGTCATCTACCAGACACTGGTGTACCCAAGAGCTGCCAAGGTTTACTGGACGTGCCAACAGAAAGACGTG  
 GACTCCTTTGAGATGGAATTTATGAGCTCGTTACCACCCCTCCTAATAATGTGCGCACAGAGCTCTGTG  
 GACAAATTCGCGACATCCTGCAGCAGAACCTGGAGCTACACAACCTGACCCCAACACTGAGTATTTGTT  
 CAAGGTTAGAGCCATCAATGATAATGGTCCCGGCAAGTGGAGTGACATCTGCAAGGTGGTAACACCCAGAT  
 GGGCGTGGGAAGAACCAGGCTAAGTGGGACTCCTGAAGAACATCCAGTCTGCCCTCCAGAAGCGCTTC

ACGCGTACGCGGCCGCTCGAG - GFP Tag - GTTTAA

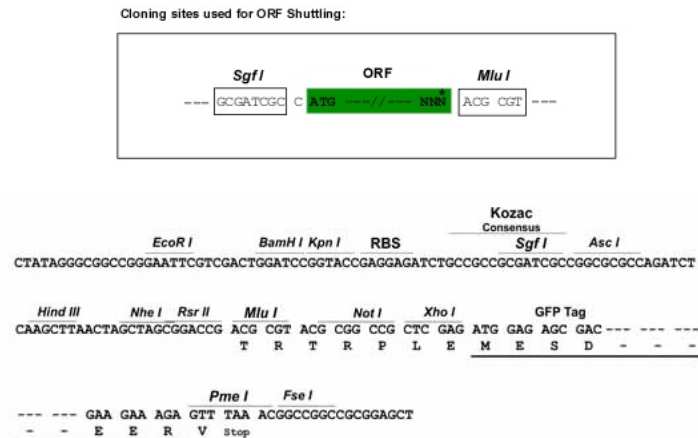
**Protein Sequence:** >MG216062 representing NM\_030219  
 Red=Cloning site Green=Tags(s)

METAMCVSPCCTWQRCPPRLFSLCCKFI FT SERNCTCFPCPYKDERNCQFCHCTCAENPNCHWCCSSW  
 ANDPNCKCCTASTNLKCYYESHSCRNVTITFRKGRLRSIVTSSKTALRVGSSDTQMDEPKTMPASSHL  
 VSHLTCPMNRRLRHSFMLPCNHSLCEKCLRQLQKHAEVTFNFILICPMCSRSHCMPIYSHQMHLPENYL  
 RGRLTKRYMQQHGYLKWRFDRSSGPILCQVCRTRRIAYKRCVTCRLNLCNDCLKAFHSDVAMQDHFVVD  
 SAEDQDEKICIHHPSSRINEYCRSDNQLLCAFCKIAFHNGHDTVSLIDACSERSAALFSAIAKFKAVRYE  
 IDNDLMEFNILKSSFADKAEKRKEVRNGFLKLRILQEKEKIIMEQIENLEVSQRKEIEKYVYITTMKV  
 NEMDGLIAYSKEALKETGQVAFQLSAILVDQIEEGIQNTFRPDPQLRLHSLHLCIPLDFAELSNAIHEL  
 PTGPKKACSSGDSLPSQYPIHSEMMIARKVTFSTHSFGNQIYQRSSSLISFNTANDKGKMGLENYGRAQ  
 SAAPAKTTDGLTYWSATGETQPPQSSNSFHNWYSFNDSVTRTPGPIVIVYQTLVYPRAAKVYWTCTEDV  
 DSFEMEFYELVTPPNVRETELCGQIRDILQONLELHNLTPNTEYLFKVRAINDNPGQWSDICKVVTPD  
 GRGKNAKWGLLKNIQSALQKRF

TRTRPLE - GFP Tag - V

**Restriction Sites:** SgfI-MluI

**Cloning Scheme:**



**ACCN:** NM\_030219

**ORF Size:** 2169 bp

**OTI Disclaimer:** The molecular sequence of this clone aligns with the gene accession number as a point of reference only. However, individual transcript sequences of the same gene can differ through naturally occurring variations (e.g. polymorphisms), each with its own valid existence. This clone is substantially in agreement with the reference, but a complete review of all prevailing variants is recommended prior to use. [More info](#)

**OTI Annotation:** This clone was engineered to express the complete ORF with an expression tag. Expression varies depending on the nature of the gene.

**Components:** The ORF clone is ion-exchange column purified and shipped in a 2D barcoded Matrix tube containing 10ug of transfection-ready, dried plasmid DNA (reconstitute with 100 ul of water).

**Reconstitution Method:**

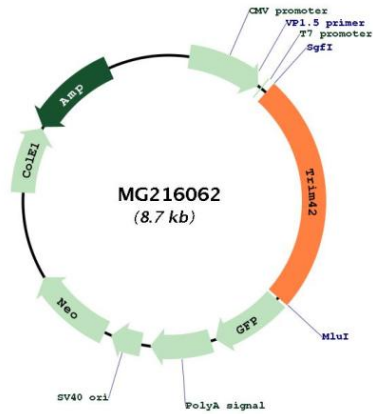
1. Centrifuge at 5,000xg for 5min.
2. Carefully open the tube and add 100ul of sterile water to dissolve the DNA.
3. Close the tube and incubate for 10 minutes at room temperature.
4. Briefly vortex the tube and then do a quick spin (less than 5000xg) to concentrate the liquid at the bottom.
5. Store the suspended plasmid at -20°C. The DNA is stable for at least one year from date of shipping when stored at -20°C.

**Note:** Plasmids are not sterile. For experiments where strict sterility is required, filtration with 0.22um filter is required.

**RefSeq:** [NM\\_030219.2](#), [NP\\_084495.2](#)

RefSeq Size: 2465 bp  
 RefSeq ORF: 2172 bp  
 Locus ID: 78911  
 UniProt ID: [Q9D2H5](#)  
 Cytogenetics: 9 E3.3

**Product images:**



Circular map for MG216062