

Product datasheet for **MG216058**

Trcg1 (NM_001014398) Mouse Tagged ORF Clone

Product data:

Product Type:	Expression Plasmids
Tag:	TurboGFP
Symbol:	Trcg1
Mammalian Cell Selection:	Neomycin
Vector:	pCMV6-AC-GFP (PS100010)
E. coli Selection:	Ampicillin (100 ug/mL)



ORF Nucleotide Sequence: >MG216058 representing NM_001014398
Red=Cloning site Blue=ORF Green=Tags(s)

TTTTGTAATACGACTCACTATAGGGCGCCGGGAATTCGTGCGACTGGATCCGGTACCGAGGAGATCTGCC
GCCGCGATCGCC

ATGGACAAGCAGTGGTTTCCTGCAGCTGGAATTCTCTTGGCTGCCCTCCTAGTAGTCTCTGCTTCTACCC
TGACCCCTTCTCTACTAATGAAGACCCTGAGCAGTTCCCTCAGCCCTGGCACATCAGCTCAGCAAAG
TAGCCGCATTCTACTGGGCATCCTGACAGACGCTCACTGGTGGTATCAACTCAGTTGAGAGGGAACCGGAG
GCCCTGGGAGGAGGGCAGGAGGCCTCTACAGAAGGAGCTGGGGGTGAGGAGTCTCCCTCAATGCCTG
GCCCTCAGGCAGGGTCATACCTGAACCAATCCCTCAGCCCTGACCACATCTGCATCCGACATGGCCTG
TCAGCCAGTGTCTCTGGGGCTGACCCTATAGAGGAAATCATGGCTCTTGGAACCTAGAGACAATTACG
ATGTATCACCACAGCCTTCTCCAGACATGAATCTGAGCAGAAGTTCGACAAGGTCTTCAGGTTGTGCG
GGACAGTTCCTGCCTCTGAAACACTGGAGAAAAATGTTGCATCTAAACCAGCTTGGCATTAAATTAAGC
TCCCCCTCCCCCATATTTCTAGATCTCCACACCTGTTATGGTGTACCCCAATTCAGTGTCTACATA
CCAGTGCCTGCATGGAGGGATGGCCACTCCAGGCCAGAGGCATCCCTCATCTGTGCCACTAGCTCCAAGTA
CCTCCTTAGGACTGCCTATCTTCCATGGATGCCTAACATACTGAAAGCTACAGAGTCCCTGTTGCCTGC
ATCTCCTGGAAGATCAGGGCTGGACCTCACCTCCAAGTGGCTCCAGAGCATCTGAAAACACCGTGGCT
TTGGACACAGGCCAGTATCCCGTGGTACTTCTGTGCTGCTGTTGCCCTCAGCAACATCCCCTTACAGG
CATCCTCCCCTCCACTCCCCTCGCCCTCATCAGCATACCCCTGTCTGCATCCCCTCACCTGCAGCTTT
GTCCTTCTCCCATCACCAGCCTCAATCCTGGTCCCGTTTCTCTGTCAACCACAGGAGCCAGTACTCT
CCTAAAGCTCCTGTGTCTGTCATTGCACCCTCACTACAGACTCTTTCATTAACCTCAAACCTCGGAC
CCCAGATAGCTCTACAACCTAGTACCCTGGCTATGGCTTCCACCAGCCCAATCCACATGCCACGCT
CTCCCCTCAAACATTTCTTAGCCCTCCCTACCCGCACATAGCTCTGGCTTACAGAGTCTCTGTACAT
GCTGATCCTACCCTGGCCTTACCCTCCCTCACCTGGCCAGGATATGTCTTTCAGGACTTGAGTTTCT
CCACTGGAGGACGTAGTCATACGCCACTCTGTGACCTTTAGGATCAACAGCAATCGCTTACAAAAAGC
TGTCTGGAACCTGGTACCCTTGGAGCGTGGCTGCTGAACAGGCTTATCTGCTACCAGCTCCGGTTCATC
TACCAGGAGGCCTTCCCCTCACTTCCAGGAATGTCAGCGCCCTGCTGTTTCCGCTGGCTGTCCAGAGGTGA
AAGCCTCCCTCATTTTTGGTCTCCGGATCCCTCGTCCATAGAAATCCTCTGGACTTTGTACCGCAAAGT
GAAGTCTCCAGATGGTCGTTGGGTACCTGCTCCCTGGCCGACCATGGCCTTCTCTGATGGGTACAGC
ATGACTGACCTTACCAGGAAATCATCAACATTAGCTTCACTCATGAGGCCCTTCTGCCCCAGCTGC
TTCTGCTAGTTCTCAGTCTTGATCCTGCTGGAAAAGCAGACCATCCAGCTGGTACCCACGAAGTGTG
AAGATTCTACAAGGCTGAGCTCCAGAGCCAGCCCTGCTCCTATTAGCAACGTTGAAGGAGTGGGTGAGC
GTTTACATGGAATACAATTAAGAGCCCCATCCCCTCCGCTCCAAGGCTGGCCAGTCACTGGCC
ATCATATAACAGATCCCACCTTCCAGAAATCCAGCATAATGGCCAATGGGAGAAAGCAGATCTGGTGT
TTATGAGATGTGGCTCTTGATCCTGGGTACCCCTTCCAAAGACCTTGGAGAACAAGACTAGTTCTGAG
TGCCAGGAGCTTCTGGACTGCTGACGAGACAGCTAACCTCAGTCTCCAGCCTTTGAAGAACTTTGGT
AAGTGGTGGTGGAGGAATCCACCAGGAACCACTGACTGCCAGGGTACAAACGGCCTTCTTGGGGCTGT
GCCAGCCAGGCCATATTCAAGACACCGTCTCAAGCCCTGGGCTCCCTGCAGGAACTGAGGCTCTG
CAGTTAGAGATGCTCCTCCAGTCTTGGACCCCAAGCTCCAGAGCCTCGAGAGGCCCCAGGGGCGGGG
CCATGCTGAACCTCCAGCGCTTCACTTCTCTTTGTCTGGTGGCTCTTGTACGGCTCCTCCCTTCAT
CAATAAGCAAGCCCTATACCTCTCC

ACGCGTACGCGGCCGCTCGAG - GFP Tag - GTTTAA

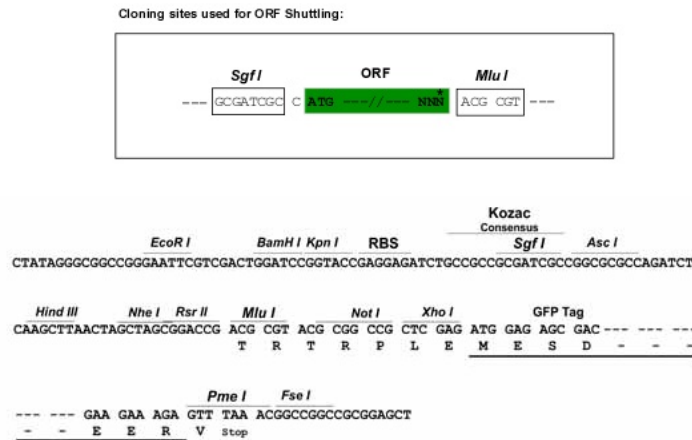
Protein Sequence: >MG216058 representing NM_001014398
 Red=Cloning site Green=Tags(s)

```
MDKQWFPAAGILLAALLVVSASTLTLSTNEDPEQFPSAPGTSAQQSSRILLGILTDVTTGGINSVEREPE
ALGRRAGGLSTEGAGGQESPSMPGPGSRVPEPIPSALTTSASDMAQPVSSGADPIEEIMALGLETIT
MSSPQPSPRHESEQKFDKVFRLCGTVPASETLEKNVASKPAWHLIKAPPPPIFSRPHLLWCTPNSTVYI
PVPAWRDGHSRPEASSVPLAPSTSLGLPIFPWMPNLIKATESLLPASPGRSGLDLTSQVGSRASENTVA
LDTGPVSRGTSVLLLPSATSPSQASSLHSPRPSSASPLSASPAAALSFPPSPASILVPVSSVTTGASDS
PKAPVSVIAPSTTDSFIKTSNLGPQIALQPSHPGLWLPTSPIHMPTLSLQHFSSPSTAHSSGFTSSVH
ADPTLASTLPHPGQDMSLDLFSFTGGRSHTTHTSVTRINSNRFTKAVWNLVPLERWLLNRLICYQLRFI
YQEFAPNFRNVSALLFRPGCEVKASLIFGPPDPSSIEILWTLYRKVKSSRWSLGYLSLADHGLSSDGYS
MTDLTQEIIINISFTLMRPFLLPQLLLPSSQSCILLEKQTIQLVTHEVSRFYKAELQSQPLLLFSNVKEWVS
YMEYKFKSPIPIRLQGLASHLAHHITDPTLQKSSIMANGEKADLVFYEMWLLILGHPFTKTLENKTSSE
CQELRGLLTRLQTSVLQPLKNFGQVVVEEFHQEPLTARVQTAFAGVAPAI IQDVLQALGSLQETEGL
QLEMLLPVLGTPSSRASRGPRGGAMLNLQRF TSLFVLVALCTAPPFINKQALYLS
```

TRTRPLE - GFP Tag - V

Restriction Sites: SgfI-MluI

Cloning Scheme:



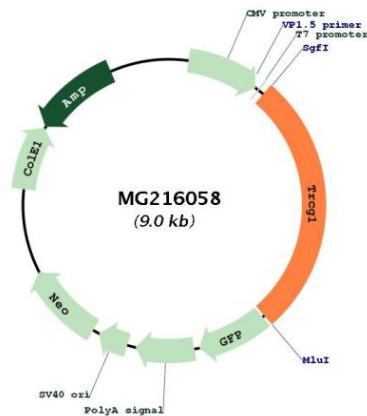
ACCN: NM_001014398

ORF Size: 2475 bp

OTI Disclaimer: The molecular sequence of this clone aligns with the gene accession number as a point of reference only. However, individual transcript sequences of the same gene can differ through naturally occurring variations (e.g. polymorphisms), each with its own valid existence. This clone is substantially in agreement with the reference, but a complete review of all prevailing variants is recommended prior to use. [More info](#)

OTI Annotation: This clone was engineered to express the complete ORF with an expression tag. Expression varies depending on the nature of the gene.

Components:	The ORF clone is ion-exchange column purified and shipped in a 2D barcoded Matrix tube containing 10ug of transfection-ready, dried plasmid DNA (reconstitute with 100 ul of water).
Reconstitution Method:	<ol style="list-style-type: none">1. Centrifuge at 5,000xg for 5min.2. Carefully open the tube and add 100ul of sterile water to dissolve the DNA.3. Close the tube and incubate for 10 minutes at room temperature.4. Briefly vortex the tube and then do a quick spin (less than 5000xg) to concentrate the liquid at the bottom.5. Store the suspended plasmid at -20°C. The DNA is stable for at least one year from date of shipping when stored at -20°C.
Note:	Plasmids are not sterile. For experiments where strict sterility is required, filtration with 0.22um filter is required.
RefSeq:	NM_001014398.2 , NP_001014420.2
RefSeq Size:	2727 bp
RefSeq ORF:	2478 bp
Locus ID:	541610
UniProt ID:	Q58Y74
Cytogenetics:	9 B

Product images:

Circular map for MG216058