

## Product datasheet for **MG216055**

### **Rnf19a (NM\_013923) Mouse Tagged ORF Clone**

#### **Product data:**

Product Type:	Expression Plasmids
Product Name:	Rnf19a (NM_013923) Mouse Tagged ORF Clone
Tag:	TurboGFP
Symbol:	Rnf19a
Synonyms:	AA032313; Dorfin; Rnf19; Ubce7ip2; UIP117; XYbp
Mammalian Cell Selection:	Neomycin
Vector:	pCMV6-AC-GFP (PS100010)
E. coli Selection:	Ampicillin (100 ug/mL)



[View online »](#)

ORF Nucleotide  
Sequence:

>MG216055 representing NM\_013923  
Red=Cloning site Blue=ORF Green=Tags(s)

TTTTGTAATACGACTCACTATAGGGCGGCCGGAATTCGTCGACTGGATCCGGTACCGAGGAGATCTGCC  
GCC**CGCATCGCC**

ATGCAAGAACAAGAAATAAGTTTTATTTTTAAGTATAATGAAGGGCTGTGTATGAACATTGACTCTGACT  
CAATTCTGATGAGCATTTTAGACATGAGTTACATCAGCAAATGGGCTCAGATAGAGATCTTCAGTCTTC  
TACTTCTCCGTGAGCTTGCCTTCTGTCAAAAAGGCACCCAAACAGAGAAGGATTTCAATAGGCTCTCTC  
TTTCGGAGGAAGAAGGACAGCAAACGAAATCAAGGGAGCTCAATGGTGGAGTGGATGGAATGCAAGTA  
TTGAGAGTATACATTCTGAAATGTGTGCTGATAAGAACTCCATTTTCTCTACAAATACCTCTTGACAA  
TGGATTGACTTCCATCAGCAAACAAATGGAGACTTTATAGAATGCCTTTGTGCCTTTTACGGCATTCT  
AAAGACAGATTTCTGATATAATGACATGCCACCATAGATCTTGTGTGGATTGCTTACGACAATACCTAA  
GGATAGAAATCTCTGAAAGTAGAGTTAATATCAGTTGCCAGAATGCACTGAACGGTTTAACTCTCATGA  
CATTTCGTTGATATTAAGTGATGATGTCTTAATGGAAAAATGAAGAATTTATGCTTCGACGGTGGCTT  
GTTGCAGATCCTGACTGTAGGTGGTGTCCGGCTCCAGACTGTGGATACGCTGTGATAGCATTGGATGTG  
CCAGCTGTCCAAAATAACTTGTGGGCGAGAAGGCTGTGGAACAGAGTTTTGCTACCACTGTAAACAGAT  
CTGGCATCCAAACCAGACCTGTGATGCTGCTCGACAGGAAAGAGCCAAAGTTTACGCTTAAAGACTATA  
CGTTCTTCATCTATTAGTTACAGCCAGGAATCTGGAGCAGCAGCTGATGATATAAAGCCATGTCCACGAT  
GTGCTGCTTATAATAAAGATGAATGATGGGAGTTGCAATCATATGACATGTGCTGTCTGTGGTTGTGA  
GTTTTGTTGGCTATGATGAAAGAAATCCTCGATTTACATTATCTAAGTCCCTCAGGTTGACTTTTTGG  
GGGAAGAAACCTGGAGCCGAAAGAAGAAATCCTGTGGCAGCTGGGAACCTTGTGGTCTCCCGTAG  
GATTGCTCTCATAGCTGGCATTGCCATTCGCCCATGATCATTGGCATTCTGTGTGCTGGGCGCAA  
GATTCATAATCGCTATGAAGGCAAAGATGTTTCAAACATAAGCGGAATCTGGCCATAGCAGGCGGTGTC  
ACCCTGTCTGTAATCGTGTCTCCGGTGGTAGTGCAGTACTGTAGGCATTGGTGTCCCATCATGCTAG  
CTTATGTCTATGGTGTGGTCCCAATTTCTCTGCGCAAGTGGGGTTGTGGTGTCTCTGCGGGCAATGG  
GAAAGGAGTGAGGATTGAGTTTGTGATGATGAGAATGACATAAACGTCGGTGGGACTAACGCAGCCATAGAT  
ACAACATCAGTAGCAGAAGCAAGGCACAACCTAGCATAGGAGAGGGAAGTGTCCGCGCCTGACTGGCA  
GTTTGTGCAAGTGAAGCCACATGGATCGAATAGGCACCATTAGAGACAACCTGAGTGAGACAGCGAG  
CACCATGGCATTAGCTGGAGCTAGTATCACGGCAGTCTGTCCGGAAGTCCCATGGTAAACTGTTTCAAC  
AGGTTGGAAGTACAAGCAGACGTACAGAAAGAACGGTGTAGTCTCAGTGGAGAGTCTGGCACAGTGA  
TGGGAACAGTTAGTGATAACGCCAGCACCAAGCAATGGCGGGATCCATTCTCAACTCCTACATCCCTCT  
GGACAGAGAAGGGAACAGCATGGAAGTGAAGTGGATATTGAGTCAAAGCCATTCAAGTCCGACACAAC  
AGTGGAAGCAGCAGTGTGGATGACAGTGGTGTACCCGAGGCCACACAGGCGGGCGTCCAGTGGCTTGC  
CCGAAGGTAATCCAGTGTACCAAGTGGTCCAAGGAAGCAACAGGAGGAAAAAAGTCAAAAAGTGGTAA  
ACTGAGGAAAAAGGGTAACATGAAGTCAATGAGACCAGAGAGGACATGGATGCACAGTTGTTAGAGCAA  
CAAAGCACGAACCAAGTGAATTTGAGGCGCCATCCCTCAGTGACAGCATGCCGTCTGTAGCAGATTCCC  
ACTCCAGTCATTTTTCTGAATTTAGCTGCTCAGACTTAGAAAGCATGAGAAGTCCCTGTAGTCACGGCTC  
CAGTGATTGCCACGCCCCTTACAGCTGTGAACACCCCTCCTGAGGTAGAAAACGACCCAGCTGGAGAAC  
TACCACACCAGTGCAGCAGCGCTCTGCTTTCAAAGTCTTCTGTTTCAAGATGTCACAGCCAGCCAGCC  
ATGCTGCAGACGAGCATGGCACCAGCAGAAGTGGGGGAAGCCTATGGTGGATTTGTGTTTTGGTATGC  
ACTGAGAGAGACAAATAAACCCTCGCACCAGACAGCAGCCTGAAAGTTGCTGTCCAGACTGAAATT

**ACCGT**ACGCGGCCGCTCGAG - GFP Tag - GTTTAA

**Protein Sequence:** >MG216055 representing NM\_013923  
 Red=Cloning site Green=Tags(s)

```

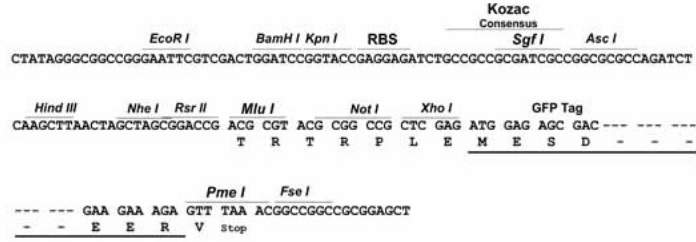
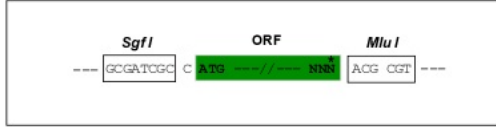
MQEQEISFIFKYNEGLCMNIDSDSILMSILDMSLHQQMGSDRDLQSSTSSVSLPSVKKAPKQRRISIGSL
FRRKKDSKRKSRELNGGVDGIASIESIHSEMCADKNSIFSTNTSSDNLTSISKQIGDFIECPLCLRHS
KDRFPDIMITCHHRSCVDCLRQYLRIEISESRVNI SCPECTERFNPHDIRLILSDDVLMKEYEFLRRWL
VADPDCRWCAPDCGYAVIAFGCASC PKLTCGREGCGTEFCYHCKQIWHPNQTCDAARQERAQSLRLRTI
RSSSISYSQESGAAADDIKPCPRCAAYIIKMNDGSCNHMTCAVCGCEFCWLCMKEISDLHYLSPSGCTFW
GKKPWSRKKKILWQLGTLVGAPVGI ALIAGIAIPAMIIGIPVYVGRKIHNRYEKDVSKHKRNLA IAGGV
TLSVIVSPVVAAVTVGIGVPIMLAYVYGVPISLCRSGGCGVSAGNGKGVRIEFDENDINVGGTNA AID
TTSVAEARHNPSIGEGSVGGLTGSL SASGSHMDRIGTIRDNLSETASTMALAGASITGSLSGSAMVNCFN
RLEVQADVQKERCSL SGESGTVSLGTVSDNASTKAMAGSILNSYIPLDREGNSMEVQVDIESKPFKFRHN
SGSSSVDDSGATRGHTGGASSGLPEGKSSATKWSKEATGGKSKSGKLRKKGNMKINETREDMDAQLLEQ
QSTNSSEFEAPSLSDSMPSVADSHSHFSEFSCSDLESMRTSCSHGSSDCHARFTAVNTLPEVENDRLEN
SPHQCSSALLSKAASCSDVPQPSHA ADEHGT SRSGGKPMVDLCFGDALRETNNNHSHQTADLKVAVQTEI
  
```

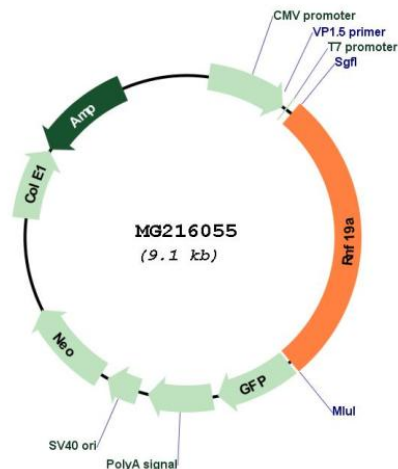
TRTRPLE - GFP Tag - V

**Restriction Sites:** Sgfl-Mlul

Cloning Scheme:

Cloning sites used for ORF Shutting:



**Plasmid Map:**


**ACCN:** NM\_013923

**ORF Size:** 2520 bp

**OTI Disclaimer:** The molecular sequence of this clone aligns with the gene accession number as a point of reference only. However, individual transcript sequences of the same gene can differ through naturally occurring variations (e.g. polymorphisms), each with its own valid existence. This clone is substantially in agreement with the reference, but a complete review of all prevailing variants is recommended prior to use. [More info](#)

**OTI Annotation:** This clone was engineered to express the complete ORF with an expression tag. Expression varies depending on the nature of the gene.

**Components:** The ORF clone is ion-exchange column purified and shipped in a 2D barcoded Matrix tube containing 10ug of transfection-ready, dried plasmid DNA (reconstitute with 100 ul of water).

**Reconstitution Method:**

1. Centrifuge at 5,000xg for 5min.
2. Carefully open the tube and add 100ul of sterile water to dissolve the DNA.
3. Close the tube and incubate for 10 minutes at room temperature.
4. Briefly vortex the tube and then do a quick spin (less than 5000xg) to concentrate the liquid at the bottom.
5. Store the suspended plasmid at -20°C. The DNA is stable for at least one year from date of shipping when stored at -20°C.

**RefSeq:** [NM\\_013923.2](#), [NP\\_038951.1](#)

**RefSeq Size:** 4276 bp

**RefSeq ORF:** 2523 bp

**Locus ID:** 30945

**UniProt ID:** [P50636](#)

**Cytogenetics:** 15 B3.1

**Gene Summary:** E3 ubiquitin-protein ligase which accepts ubiquitin from E2 ubiquitin-conjugating enzymes UBE2L3 and UBE2L6 in the form of a thioester and then directly transfers the ubiquitin to targeted substrates, such as SNCAIP or CASR.[UniProtKB/Swiss-Prot Function]