

## Product datasheet for **MG216049**

### Zfp120 (NM\_023266) Mouse Tagged ORF Clone

#### Product data:

**Product Type:** Expression Plasmids  
**Tag:** TurboGFP  
**Symbol:** Zfp120  
**Synonyms:** AI315103; E030042N05Rik; F80; MZF31; Zfp844  
**Mammalian Cell Selection:** Neomycin  
**Vector:** pCMV6-AC-GFP (PS100010)  
**E. coli Selection:** Ampicillin (100 ug/mL)

**ORF Nucleotide Sequence:** >MG216049 representing NM\_023266  
Red=Cloning site Blue=ORF Green=Tags(s)

TTTTGTAATACGACTACTATAGGGCGCCGGGAATTCGTCGACTGGATCCGGTACCGAGGAGATCTGCC  
GCCGCGATCGCC

ATGTTTCTGCTTGATGTGTTCTGTGTACCGCTCCTGGGTGCGGGGACCTCAGGCAAGCCCAGAAGTTCCG  
ACATGGATATAGTGACCTATGATGATGTGCATGTGAATTCACGTGGGAAGAGTGGGCTTTGCTGGATCC  
TTCTCAGAAGGATCTCTACAGAGATGTGATGCTGGAGACCTACAGGAATCTCGCTGCTATAGGCATGAAA  
GAAGTGATACTGAAGAGAACTTTCTGAATTTACTCAATATGATAAAGACTTTGCATATCAGAGCCATCC  
TCAAAGGCATGAAAGAATTTATTCTGGAGAGAAAACCCATGAAGGTGTCCAATATTTTGAAGACTTTGCA  
CATCACAGTAGTCTCCAATACAGAGAAGAACACATGTTG

ACGCGTACGCGGCCGCTCGAG - GFP Tag - GTTAA

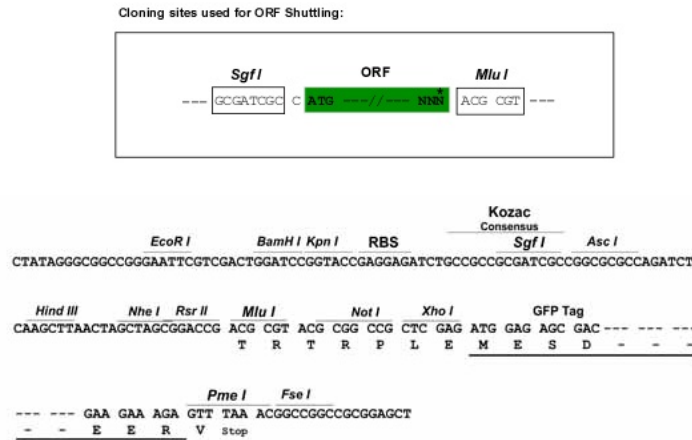
**Protein Sequence:** >MG216049 representing NM\_023266  
Red=Cloning site Green=Tags(s)

MFLLDVFCVPLLGAGTSGKPRSSMDIVTYDDVHVNFVWEEWALLDPSQKDLYRDVMLETYRNLAAGMK  
EVILKRNFLNLLNMIKTLHIRAILKGMKEFILERNPMKVSNIKTLHITVVSKYREEHML

TRTRPLE - GFP Tag - V

**Restriction Sites:** SgfI-MluI



**Cloning Scheme:**


**ACCN:** NM\_023266

**ORF Size:** 390 bp

**OTI Disclaimer:** The molecular sequence of this clone aligns with the gene accession number as a point of reference only. However, individual transcript sequences of the same gene can differ through naturally occurring variations (e.g. polymorphisms), each with its own valid existence. This clone is substantially in agreement with the reference, but a complete review of all prevailing variants is recommended prior to use. [More info](#)

**OTI Annotation:** This clone was engineered to express the complete ORF with an expression tag. Expression varies depending on the nature of the gene.

**Components:** The ORF clone is ion-exchange column purified and shipped in a 2D barcoded Matrix tube containing 10ug of transfection-ready, dried plasmid DNA (reconstitute with 100 ul of water).

**Reconstitution Method:**

1. Centrifuge at 5,000xg for 5min.
2. Carefully open the tube and add 100ul of sterile water to dissolve the DNA.
3. Close the tube and incubate for 10 minutes at room temperature.
4. Briefly vortex the tube and then do a quick spin (less than 5000xg) to concentrate the liquid at the bottom.
5. Store the suspended plasmid at -20°C. The DNA is stable for at least one year from date of shipping when stored at -20°C.

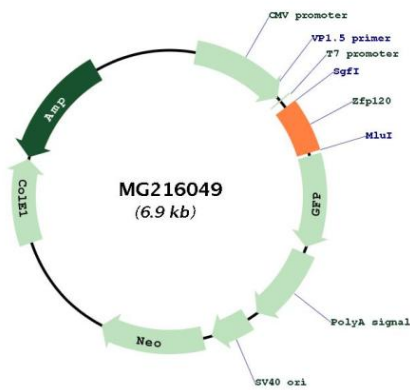
**Note:** Plasmids are not sterile. For experiments where strict sterility is required, filtration with 0.22um filter is required.

RefSeq: [NM\\_023266.4, NP\\_075755.4](#)  
 RefSeq Size: 4032 bp  
 RefSeq ORF: 393 bp  
 Locus ID: 104348  
 UniProt ID: [Q8BZW4](#)

Cytogenetics: 2 G3

Gene Summary: May be involved in transcriptional regulation.[UniProtKB/Swiss-Prot Function]

**Product images:**



Circular map for MG216049