

## Product datasheet for **MG216041**

### **Pfkfb2 (NM\_001162416) Mouse Tagged ORF Clone**

#### **Product data:**

Product Type:	Expression Plasmids
Product Name:	Pfkfb2 (NM_001162416) Mouse Tagged ORF Clone
Tag:	TurboGFP
Symbol:	Pfkfb2
Synonyms:	4930568D07Rik
Mammalian Cell Selection:	Neomycin
Vector:	pCMV6-AC-GFP (PS100010)
E. coli Selection:	Ampicillin (100 ug/mL)



[View online »](#)

**ORF Nucleotide Sequence:**

>MG216041 representing NM\_001162416  
 Red=Cloning site Blue=ORF Green=Tags(s)

TTTTGTAATACGACTCACTATAGGGCGGCCGGAATTCGTCGACTGGATCCGGTACCGAGGAGATCTGCC  
 GCC**GCGATCGCC**

ATGCTGAGAATAGTACATTTTCCCAAGACTGCAACAGCAGCTATAAACCCACGCCTCAAATCTGC  
 GAAGGGCAGGGAAGACATGCTCATGGGCTTCTATATGACCAACTCCCAACACTCATTGTTATGATTGG  
 CTTGCCAGCCCGGGTAAAACCTTATGTGTCTAAGAACTAACACGCTACCTCAACTGGATTGGAGTACCC  
 ACCAAAGTGTAACTCTGGGGTATATCGACGTGAAGCAGTCAAGTCTATCAGTCTTATGATTTCTTTC  
 GACATGACAAATGAAGAGGCTATGAAGATCCGCAACAGTGTGCTCTGGTGGCACTGGAAGATGTTAAAGC  
 CTATTTTACTGAAGAGAGTGGCAGATTGCGGTGTTTGTGCCACCAATACCACTCGGGAGAGGAGGGAC  
 ATGATTTTGAACTTTGCCAAGCAGAATGCCTTCAAGGTATTTTTGTAGAATCTGTCTGTGATGATCCTG  
 ATGTCATTGCTGCCAATATTCTGGAGGTAAAAGTGTGAGCCCTGACTACCCGAAAGGAATAGGGAGAA  
 TGTGATGGAGACTTCTGAAGAGAATTGAGTGTACAAGTCACTTACCAGCCCTTGACCCAGACAAC  
 TATGATAAGGATCTTTCTTTATAAAGGTGATAAATGTAGGCCAGAGATTCCTGGTCAACAGAGTTCAGG  
 ACTACATCCAGAGTAAGATTGTCTACTACCTGATGAATATCCACGTCCATCCTCGCACCATCTACCTTTG  
 CCGGCACGGCGAGAGCGAGTTCAACCTTTTGGGGAAGATTGGGGTGACTCTGGCCTCTCCGTGCGAGGA  
 AAGCAGTTTGTCTCATGCTCTGAAGAAGTTTCTGGAGGAACAGGAGATCCAGGACCTTAAAGTGTGGACGA  
 GCCAGTTGAAGAGGACAATTCAGACTGCTGAGTCTCTGGGGTGACCTATGAGCAGTGAAGATCCTCAA  
 TGAGATTGATGCTGGCGTGTGTGAGGAGATGACATATTCAGAGATTGAGCAACGGTACCCAGAGGAATTT  
 GCACTCCGAGATCAAGAGAAGTATCTGTACCGATACCTGGTGGGAGTCTACCAGGACCTGGTGCAGC  
 GGCTGGAGCCTGTCATCATGGAGCTAGAGCGTCAAGGCAACATCCTCGTTATCTCTCACCAGGCTGTCAT  
 GCGCTGCCTCCTGGCCTACTTCTTGGATAAAGGCGCAGGTTGCAAAGTGGAACAATACTCTGAATGTG  
 GATGCTGTAGACACATCGTGACAAGCCAACCACTCACAACCTCCCAAGAGCCAACCCCTGTAAGGATGA  
 GAAGGAACAGCTTTACGCCTCTGTCCAGTTCGAACACAATAAGGCGTCCAAGAAATTACAGTGTGGGAG  
 CCGACCCCTCAAGCCCTCAGCCCTCTCCGTGCTCTGGACATGCAAGAAGGGGCGGACCAGCCGAAGACC  
 CAAGTCAGCATTCCGGTGGTG

**ACGCGTACGCGGCCGCTCGAG** – GFP Tag – GTTTAA

**Protein Sequence:**

>MG216041 representing NM\_001162416  
 Red=Cloning site Green=Tags(s)

MSENSTFSPEDCNSSYPKPHASNLRRAGKTCWSASYMTNSPTLIVMIGLPARGKTYVSKKLTRYLNWIGVP  
 TKVFNLGYYRREAVKSYQSYDFFRHDNEEAMKIRKQCALVALEDVKAYFTEESGQIAVFDTNTRRRRD  
 MILNFAKQNAFKVFFVESVCDDPDVIAANILEVKVSSPDYPERNRENVMEDFLKRIEYKVTYQPLDPDN  
 YDKLSFKVINVGQRFLVNRVQDIQSKIVYYLMNIHVHPRTIYLCRHGESEFNLLGKIGGDSGLSVRG  
 KQFAHALKKFLEEQEQIDLKVWTSQKRTIQTAESLGVTYEQWKILNEIDAGVCEEMTYSEIEQRYPEEF  
 ALRDQEKYLRYRPGGESYQDLVQRLEPVIEMELERQGNILVISHQAVMRCLLAYFLDKGAGCKVETITLNV  
 DAVDTHRDKPTHNFKSQTPVRRMNSFTPLSSSNTIRRPNYSVGSRPLKPLSPLRALDMQEGADQPKT  
 QVSIPIVV

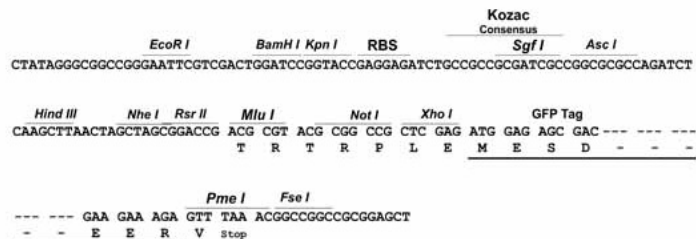
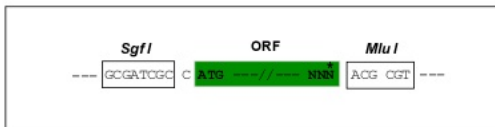
**TRTRPLE** – GFP Tag – V

**Restriction Sites:**

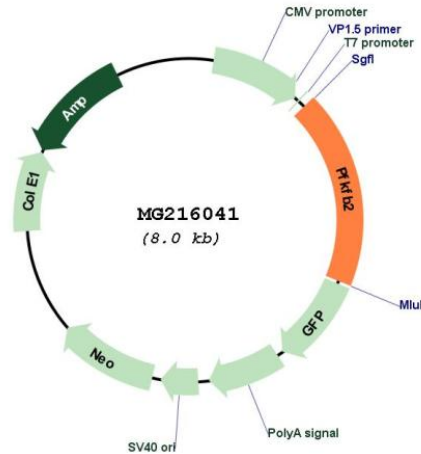
Sgfl-Mlul

Cloning Scheme:

Cloning sites used for ORF Shutting:



Plasmid Map:



ACCN: NM\_001162416

ORF Size: 1491 bp

OTI Disclaimer: The molecular sequence of this clone aligns with the gene accession number as a point of reference only. However, individual transcript sequences of the same gene can differ through naturally occurring variations (e.g. polymorphisms), each with its own valid existence. This clone is substantially in agreement with the reference, but a complete review of all prevailing variants is recommended prior to use. [More info](#)

OTI Annotation: This clone was engineered to express the complete ORF with an expression tag. Expression varies depending on the nature of the gene.

Components: The ORF clone is ion-exchange column purified and shipped in a 2D barcoded Matrix tube containing 10ug of transfection-ready, dried plasmid DNA (reconstitute with 100 ul of water).

**Reconstitution Method:**

1. Centrifuge at 5,000xg for 5min.
2. Carefully open the tube and add 100ul of sterile water to dissolve the DNA.
3. Close the tube and incubate for 10 minutes at room temperature.
4. Briefly vortex the tube and then do a quick spin (less than 5000xg) to concentrate the liquid at the bottom.
5. Store the suspended plasmid at -20°C. The DNA is stable for at least one year from date of shipping when stored at -20°C.

**RefSeq:** [NM\\_001162416.1](#), [NP\\_001155888.1](#)

**RefSeq Size:** 2382 bp

**RefSeq ORF:** 1494 bp

**Locus ID:** 18640

**Cytogenetics:** 1 E4

**Gene Summary:** Synthesis and degradation of fructose 2,6-bisphosphate.[UniProtKB/Swiss-Prot Function]